

THIS INSTRUMENT WAS FILED FOR RECORD THE 29 DAY OF June 1910 AND DULY RECORDED ON THE 29 DAY OF June 1910 IN BOOK 1 OF ON PAGE 89 RECORD VERIFIED
Ande Grains
CLERK CIRCUIT COURT
BY *Wm. G. S.*
DEPUTY CLERK

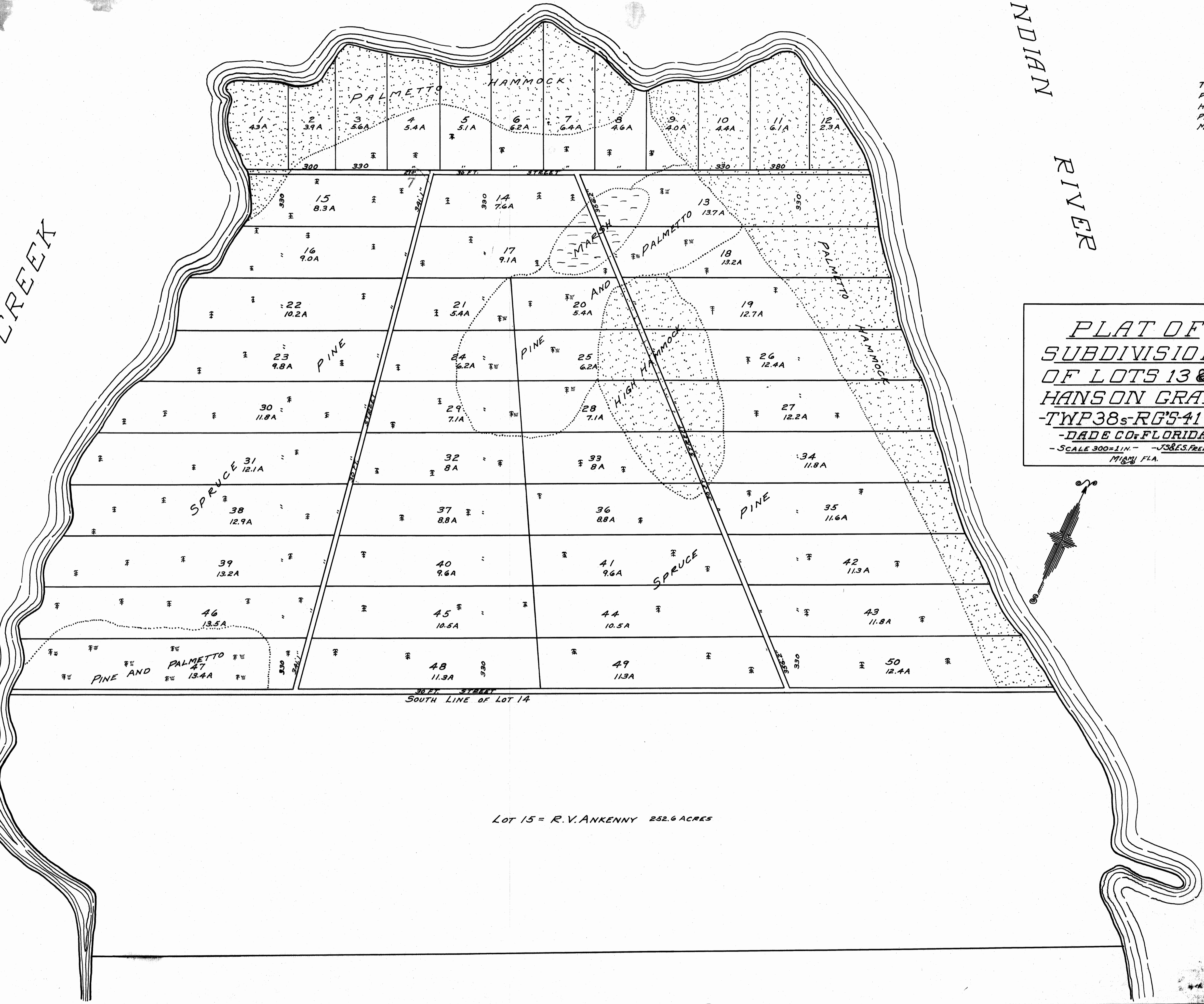
THIS IS A TRUE COPY OF THE ORIGINAL PLAT OF RECORD OF "LOTS 13 & 14, HANSON GRANT" PLAT BOOK 1, PAGE 89, PALM BEACH COUNTY, FLORIDA, NOW MARTIN COUNTY.

Fred A. Stafford
REGISTERED LAND SURVEYOR
FLORIDA CERTIFICATE NO. 443

ST. LUCIE RIVER

INDIAN RIVER

MANATEE CREEK



**PLAT OF
SUBDIVISION
OF LOTS 13 & 14
HANSON GRANT
-TWP 38S-RG 54E-
-DADE CO. FLORIDA-
-SCALE 300=1 IN.- J.S. & S. FREDERICK C.E.S.
MIAMI, FLA.**

LOT 15 = R.V. ANKENNY 252.6 ACRES

89
Copied by
BIDWELL & HOLSTLAW
Under direction of
C.H. RUGGLES
County Engineer

2 Sheets
Sheet No. 1
Traced by R.C.F. Checked by *CAF*