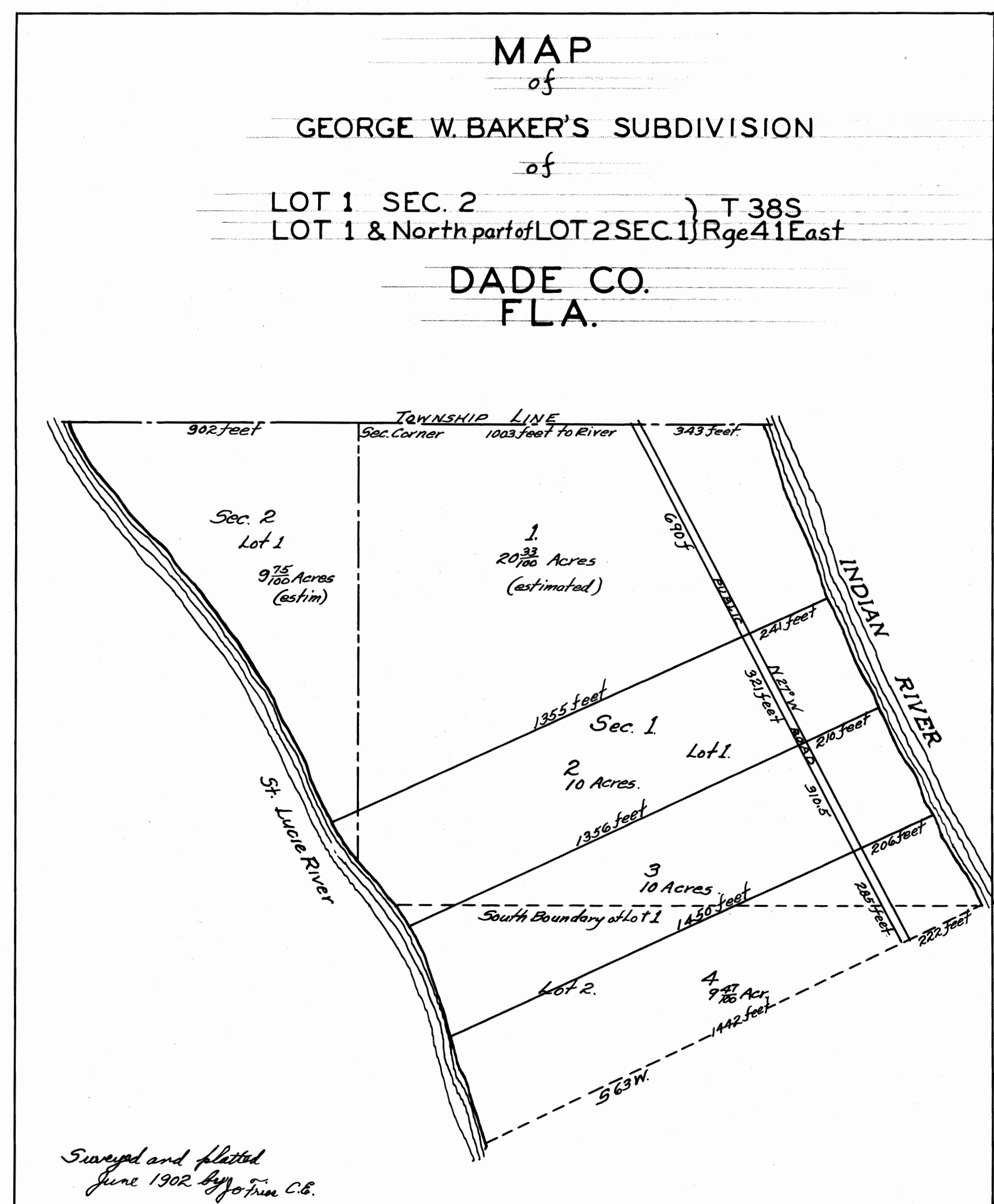


This is a true Copy of the Original Plat of Record of 'GEO. W. BAKER'S 5/10' PLAT' Book 1, Page 70, Palm Beach County, Florida, Now Martin County.

Fred A. Stafford  
REGISTERED LAND SURVEYOR  
FLORIDA CERTIFICATE No. 443

P.B.C. 1-70  
State of Florida }  
County of Palm Beach }  
This instrument was filed for Record this 12 day of April 1910 and duly recorded on the 13 day of April 1910 in Book 1 of Plats on Page 70.  
Record Verified.

Fred E. Fenno  
CLERK CIRCUIT COURT  
BY: Orndorff  
DEPUTY CLERK



STATE OF FLORIDA  
COUNTY OF PALM BEACH }  
I HEREBY CERTIFY, That the above and foregoing is a true and correct copy of a map as the same appears of record in Dade Co in Book No. 13 of Plats at page 70.  
Fred E. Fenno  
Clerk Circuit Court.  
By Orndorff D.C.

STATE OF FLORIDA }  
COUNTY OF DADE }  
This instrument was filed for record this 11th day of October 1904 and duly recorded on the 14th day of October 1904 in Book 13 of Plats at page 90.  
Signed and Verified  
C. H. Ruggles  
Clerk Circuit Court  
By J. W. C. B. Deputy Clerk

Copied by  
**BIDWELL & HOLSTLAW**  
Under direction of  
**C. H. RUGGLES**  
County Engineer

Traced by C.E.B. Checked by C.H.R.