

This is a true Copy of the Original Plat of Record of "W.M. HOGG'S 5/10" Plat Book 1, Page 66, Palm Beach County, Florida, New Martin County.

Paul B. Stafford
REGISTERED LAND SURVEYOR
FLORIDA CERTIFICATE NO. 443

State of Florida }
County of Palm Beach } 55

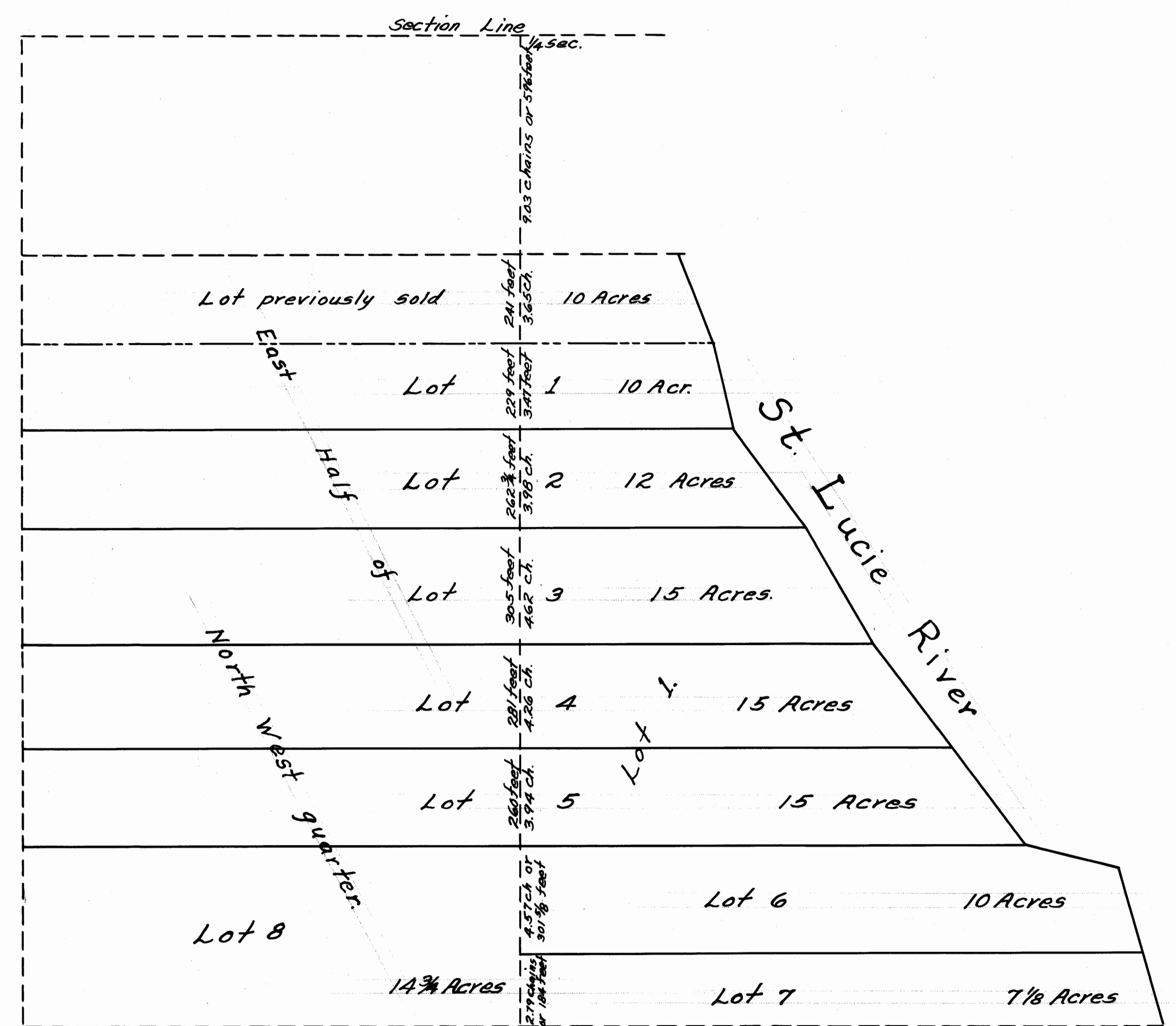
This Instrument was filed for Record this 13th day of April, 1910 and duly Recorded on the 17th day of April, 1910, in Book 1 of Plats on Page 66. Record Verified.

Fred E. Jerns
CLERK CIRCUIT COURT
By: Wm. L. ...
DEPUTY CLERK

W.M. HOGG'S

SUBDIVISION OF
LOT 1 & E 1/2 OF NW 1/4
SECTION 11
TP. 38 S. RGE. 41 E.
DADE CO.
FLA.

State of Florida
County of Palm Beach
I Fred E. Jerns Clerk of the
Circuit Court in and for Palm Beach
County Florida, hereby certify that this
plat is a true and correct copy of
Plat of Wm. Hogg's subdivision as
the same appears of record in this
office and of record in Book One of
Plats at Page 66
Witness my hand and seal
of said Court at West Palm Beach Fla.
this 11th day of March, A.D. 1926
Fred E. Jerns
Clerk Circuit Court



Surveyed and platted March 1906
by J.O. Fries C.E.

STATE OF FLORIDA }
COUNTY OF DADE } 55
This Instrument was filed for record this 8th
day of May, 1907 and duly
recorded on the 20th day of May, 1907,
in Book B, of Plats
on page 125. RECORD VERIFIED
By: J. Marshall Clerk Circuit Court
J. Frederick Deputy Clerk
Circuit of
County
Dade

STATE OF FLORIDA }
COUNTY OF PALM BEACH }
I HEREBY CERTIFY, that the
above and foregoing is a true and
correct copy of a
- Map - as the same ap
pears of record in Dade Co. Fla.
in Book No. - 13 - of - Plats
- 125 - at page 125
Fred E. Jerns
Clerk Circuit Court
By: Wm. L. ... D.C.

Copied by
BIDWELL & HOLSTLAW
Under direction of
C.H. RUGGLES
County Engineer
Traced by C.E.B. Checked by C.H.R.