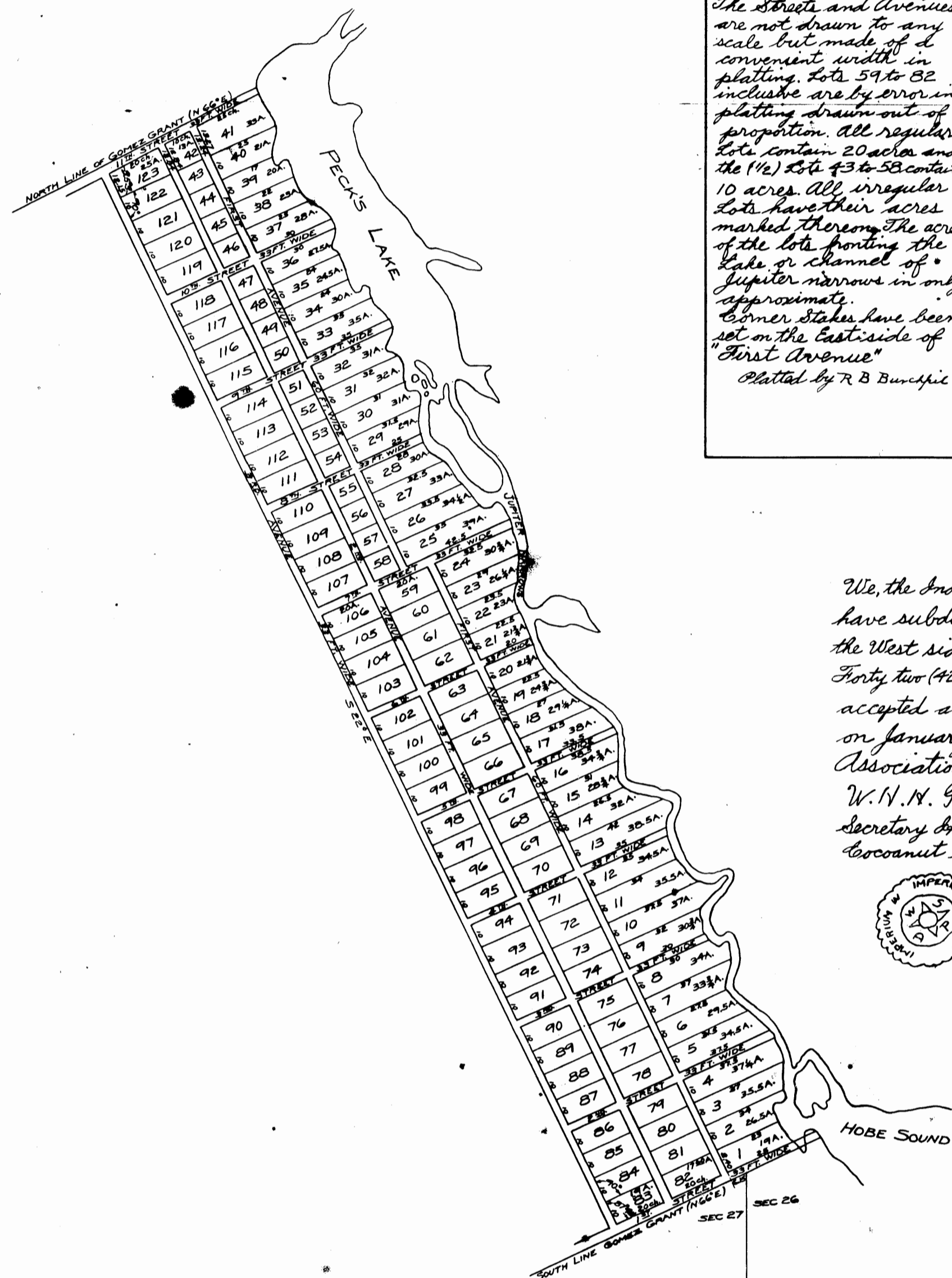
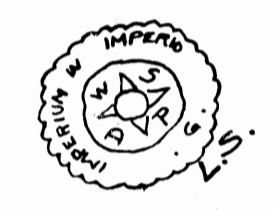


PLAT OF GOMEZ
DADE COUNTY
FLORIDA

All distances are given in chains except the widths of the streets and avenues which are in feet. The streets and avenues are not shown to any scale, but made of a convenient width in platting. Lots 59 to 82 inclusive are by error in platting drawn out of proportion. All regular lots contain 20 acres and the 16 1/2 lots of 30 to 33 contain 10 acres. All irregular lots have their acres marked thereon. The acre of the lots fronting the lake or channel of Jupiter narrows is only approximate. Corner stakes have been set on the east side of First Avenue.
Platted by R. B. Dunsie



We, the Indian River Pine Apple and Coconut Grove Association Certify that we have subdivided a portion of the land of the Ensigns M. Gomez Grant situated on the West side of Jupiter Narrows in Township 36th 33rd North of Range Forty two (42) East into lots as shown by this Plat, that the said Plat was accepted and ordered placed on record by the Stockholders of said Association on January 7th 1891. And was named Gomez by the stockholders of said Association on January 14th 1892.
W. H. M. Gleason
Secretary Indian River Pine Apple and
Coconut Grove Association
Cephas B. Magwood
President of the Indian River Pine
Apple and Coconut Grove Association.



STATE OF FLORIDA,
COUNTY OF PALM BEACH } ss
This instrument was filed for record this 2nd
day of March 1910, and duly
recorded on the 2nd day of March
1910, in Book 1 of Plats
on page 67. RECORD VERIFIED
Judge Summo
Clerk Circuit Court
By [Signature] Deputy Clerk

STATE OF FLORIDA,
COUNTY OF PALM BEACH }
I HEREBY CERTIFY, That the
above and foregoing is a true and
correct copy of a Map
as the same ap-
pears of record in Book 1 of Plats
in Book No. 1 of Plats
at page 67.
Judge Summo
Clerk Circuit Court.
By [Signature] D.C.

State of Florida }
County of Dade } I hereby certify that the fore-
going Plat was filed for Record Sept 13th 1892.
and recorded this November 21st 1892 Witness
my hand and seal at Juno Fla. this Nov
21st 1892. R. B. Dunsie, C. E. & S.

62
Copied by
BIDWELL & HOLSTLAW
Under direction of
C. H. RUSSELL
County Engineer
Traced by R.C.F. Checked by [Signature]