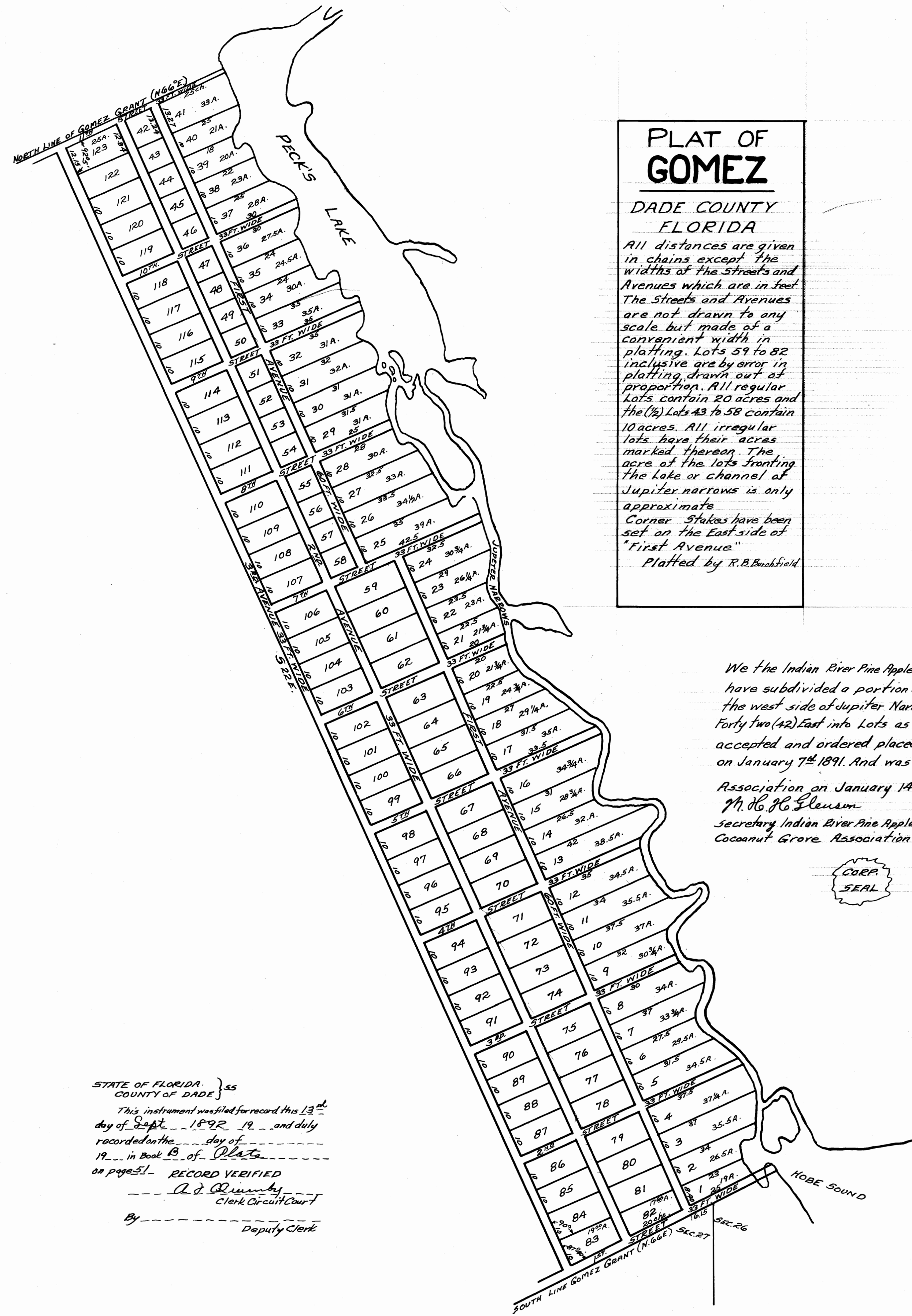


This is a True Copy of the Original Plat of Record of "GOMEZ" Plat Book 1, Page 61, Palm Beach County, Florida, Now Martin County.

Paul A. Stafford
Registered Land Surveyor
Florida Certificate No. 443

STATE OF FLORIDA }
COUNTY OF PALM BEACH }
This Instrument was filed for Record this 25 day of March 1910 and duly recorded on the 25 day of March 1910 in Book 1, of Plats on Page 61, Record Verified.

Frank E. Fumo
CLERK CIRCUIT COURT
BY: David G.
Deputy Clerk



PLAT OF GOMEZ
DADE COUNTY
FLORIDA
All distances are given in chains except the widths of the Streets and Avenues which are in feet. The Streets and Avenues are not drawn to any scale but made of a convenient width in platting. Lots 59 to 82 inclusive are by error in platting, drawn out of proportion. All regular Lots contain 20 acres and the (2) Lots 43 to 58 contain 10 acres. All irregular lots have their acres marked thereon. The acre of the lots fronting the lake or channel of Jupiter narrows is only approximate. Corner Stakes have been set on the East side of "First Avenue".
Platted by R.B. Buskfield

We the Indian River Pine Apple and Coconut Grove Association Certify that we have subdivided a portion of the land of the Enrique M. Gomez Grant situated on the west side of Jupiter Narrows in Township thirty nine 39 South of Range Forty Two (42) East into Lots as shown by this Plat, that the said Plat was accepted and ordered placed on Record by the Stockholders of said Association on January 7th 1891. And was named Gomez by the Stockholders of said Association on January 14th 1892.
M. H. G. Glensum
Secretary Indian River Pine Apple and Coconut Grove Association.
Charles B. Mayhew
President of the Indian River Pine Apple and Coconut Grove Association.

STATE OF FLORIDA }
COUNTY OF DADE }
This instrument was filed for record this 13th day of Sept 1892 and duly recorded on the day of 19 in Book 15 of Plats on page 51. RECORD VERIFIED
A. D. Quinn
Clerk Circuit Court
By _____
Deputy Clerk

Copied by
BIDWELL & HOLSTLAW
Under direction of
C.H. RUGGLES
County Engineer

Traced by R.C.F. Checked by C.H.R.