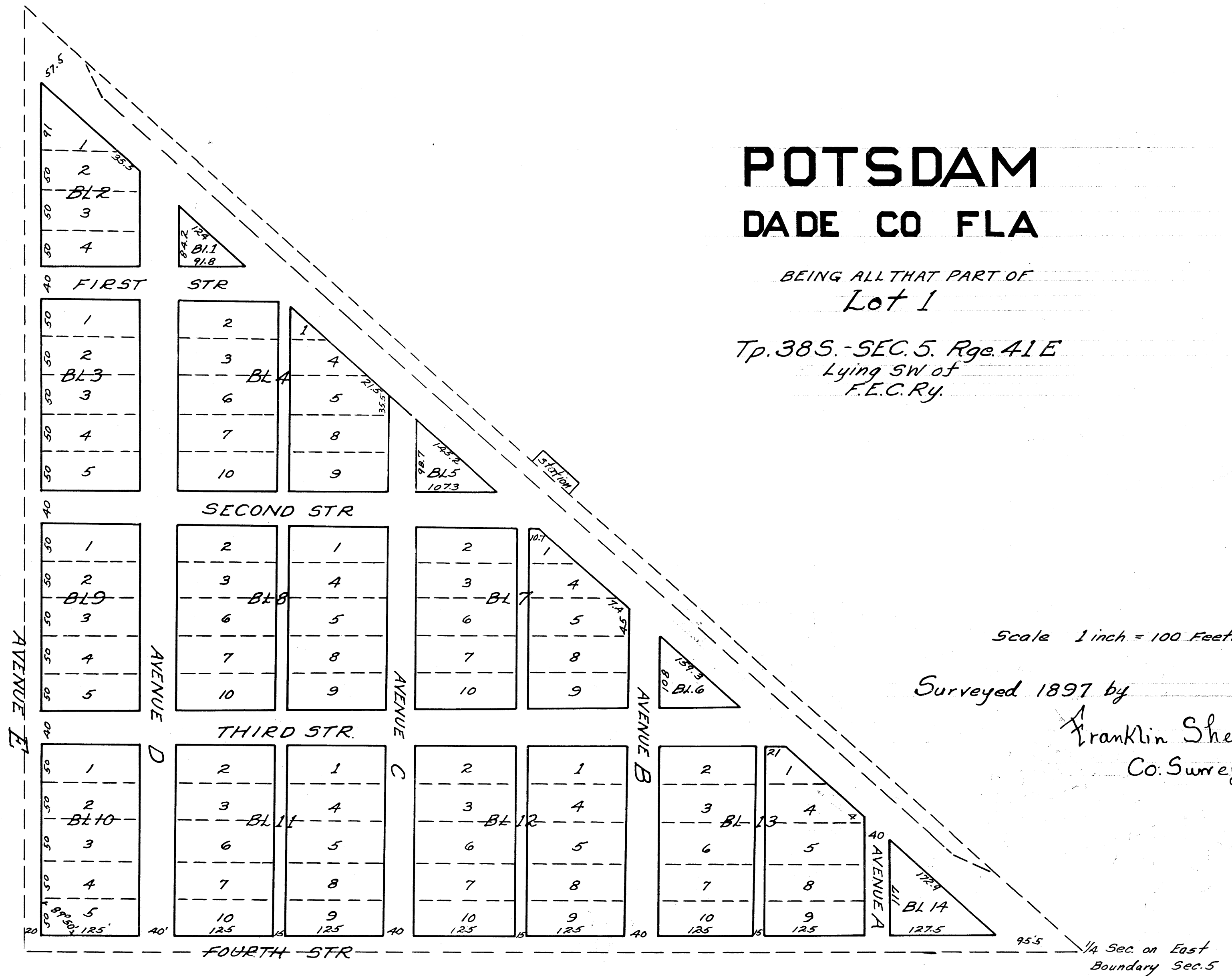


0.P.10.
1-28

This is a true Copy of the Original Plot of
Record of "Potsdam" Plat Book 1, Page 28,
Palm Beach County, Florida, Now Martin County.
Fred R. Stafford
REGISTERED LAND SURVEYOR
FLORIDA CERTIFICATE No. 443

State of Florida }
County of Palm Beach } ss
This Instrument was filed for
Record this 25 day of March, 1910
and duly recorded on the 25 day of
March, 1910, in Book 1 of Plats on page 28
Record Verified.
Fred E. Jenno
CLERK CIRCUIT COURT
BY: Wm. B. ...
Deputy Clerk.



POTSDAM DADE CO FLA

BEING ALL THAT PART OF
Lot 1
Tp. 38 S. - SEC. 5. Rge 41 E
Lying SW of
F.E.C. Ry.

Scale 1 inch = 100 Feet.
Surveyed 1897 by
Franklin Sheen
Co. Surveyor.

Filed Aug. 26th 1897
A. J. Dumbley, Ck. Ct. Clk.
pr R. S. Field, S.B. Plat Book "B" page 2
STATE OF FLORIDA,
COUNTY OF PALM BEACH.
I HEREBY CERTIFY, that the
above and foregoing is a true and
correct copy of a
Map as the same ap
pears of record in Dade Co. Fla
in Book No. 19 of
Plats at page 2
Fred E. Jenno
Clerk Circuit Court
By Wm. B. ... - D.C.

Copied by
BIDWELL & HOUSTLAW
Under direction of
C. H. RUGGLES
County Engineer.

Traced by C.E.B. Checked by C.H.L.