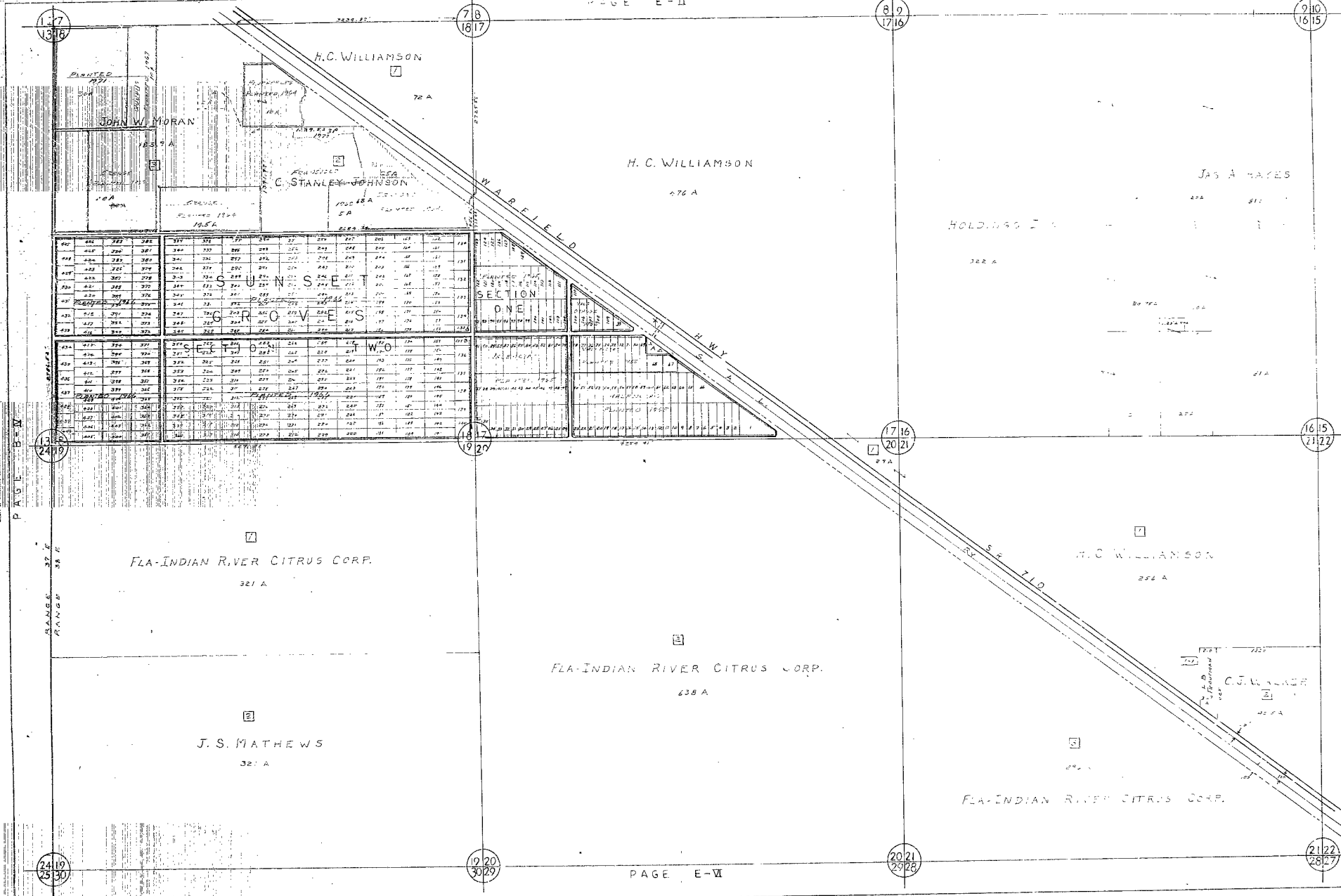


SUNSET GROVES

PAGE E-II

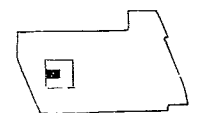
PAGE E-IV

PAGE E-VI



18.1

CONDITION OF DOCUMENT
IRREVOCABLE FOR MICROFILMING



SCALE 1" = 660'

ASSESSMENT MAP
MARTIN COUNTY,
FLORIDA

SECTION 17, 18, 19, 20, 21
TOWNSHIP 39 S
RANGE 38 E

DRAWN BY J. M. P. DATE 2/28/78

PAGE E-III