

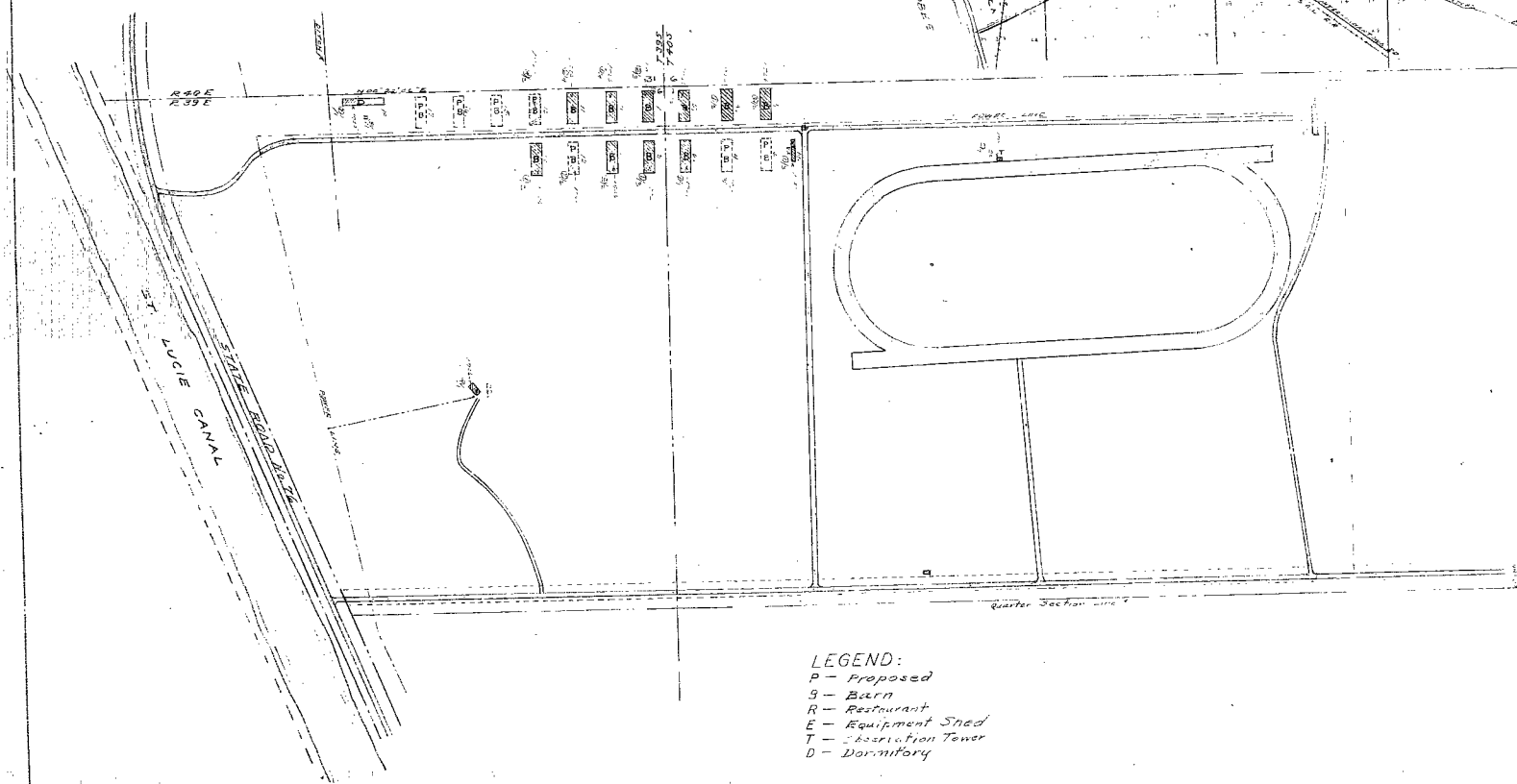
# ST. LUCIE PARK

MARTIN COUNTY, FLORIDA

SCALE 1" = 300'

VICINITY MAP

SCALE 1" = 2 MILES



- LEGEND:
- P - Proposed
  - S - Burn
  - R - Restaurant
  - E - Equipment Shed
  - T - Observation Tower
  - D - Dormitory

22:1

CONDITION OF DOCUMENT  
UNAVAILABLE FOR MICROFILMING

ST. LUCIE PARK, INC.  
MARTIN COUNTY, FLORIDA

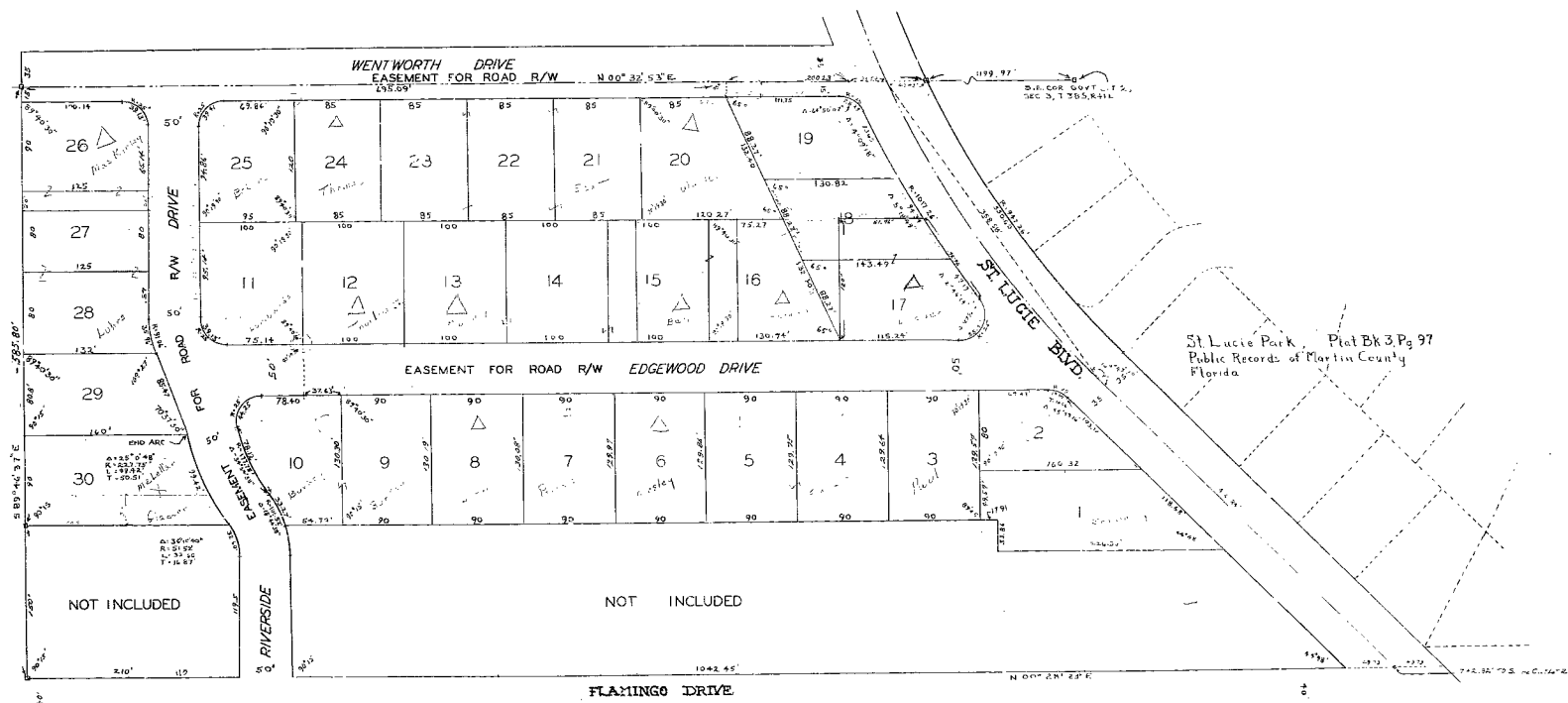
Engineered and designed by  
Ben Herr, C.E.  
FLORIDA CERTIFICATE NO. 1872

Drawn by  
STURFORD & BRUCE  
Landscape Architects  
P.O. Box 1000  
Fort Pierce, Florida

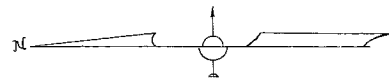
UNRECORDED PLAT OF AN ADDITION TO

# ST. LUCIE PARK

A SUBDIVISION OF A PART OF THE EAST 585.4 FEET OF GOV'T. LOT 2,  
SECTION 3, T.38 S., R.41 E.,  
MARTIN COUNTY,  
FLORIDA.  
MAY 23, 1961 SCALE 1"=60'



Sec. 4 of St. Lucie Estates, Plat Bk 12, Pg. 58, Public Records of Palm Beach (now Martin) County, Florida.



I Hereby Certify that the plat shown herein is a true and correct representation of a survey made under my direction and that survey was accurate to the best of my knowledge and belief.

*Red A. Stafford*  
REGISTERED LAND SURVEYOR  
FLORIDA LICENSE NO. 2222

STAFFORD & BROCK  
ENGINEERS & SURVEYORS  
STUART, FLORIDA.

STAFFORD & BROCK  
ENGINEERS & SURVEYORS  
STUART, FLORIDA.

22:1