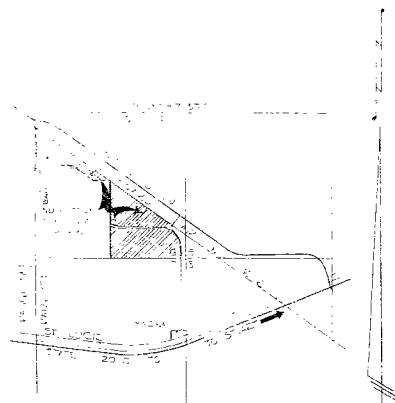


Indiantown Industrial Park

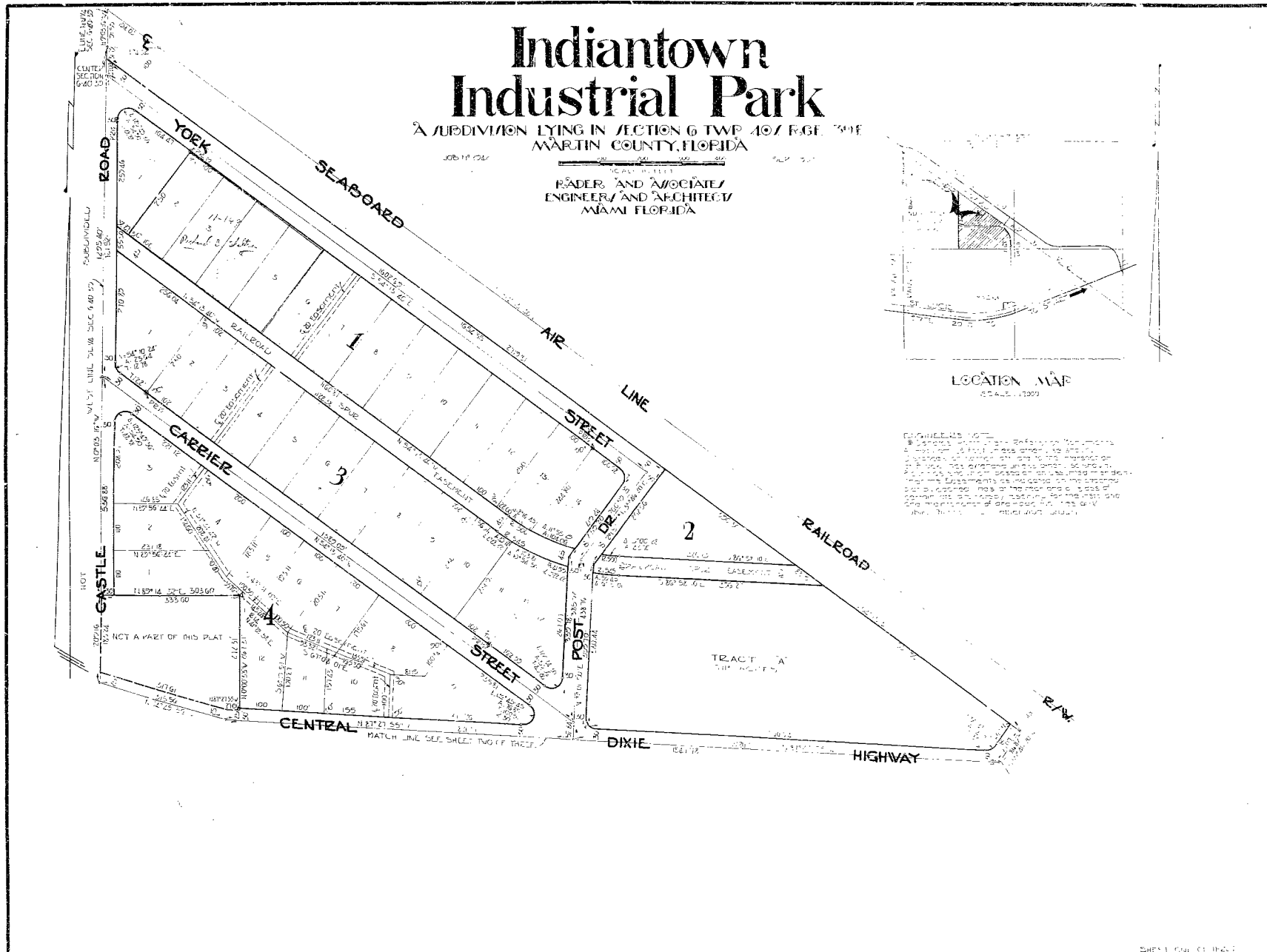
A SUBDIVISION LYING IN SECTION 6 TWP 40S R.6E 791E
MARTIN COUNTY, FLORIDA

READER AND ASSOCIATES
ENGINEERS AND ARCHITECTS
MIAMI, FLORIDA



LOCATION MAP
© 1945

NOTES:
1. ALL DIMENSIONS ARE IN FEET AND DECIMALS THEREOF.
2. THE AREA SHOWN ON THIS MAP IS SUBJECT TO THE RIGHTS OF THE STATE OF FLORIDA AND THE UNITED STATES GOVERNMENT.
3. THE AREA SHOWN ON THIS MAP IS SUBJECT TO THE RIGHTS OF THE STATE OF FLORIDA AND THE UNITED STATES GOVERNMENT.
4. THE AREA SHOWN ON THIS MAP IS SUBJECT TO THE RIGHTS OF THE STATE OF FLORIDA AND THE UNITED STATES GOVERNMENT.



CALC. H.P.C. & B.C.
DRAWN J.R.G.
C.K.D. L.R.C.

24:1

SHEET ONE OF TWO

2942