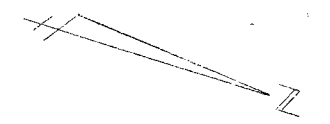
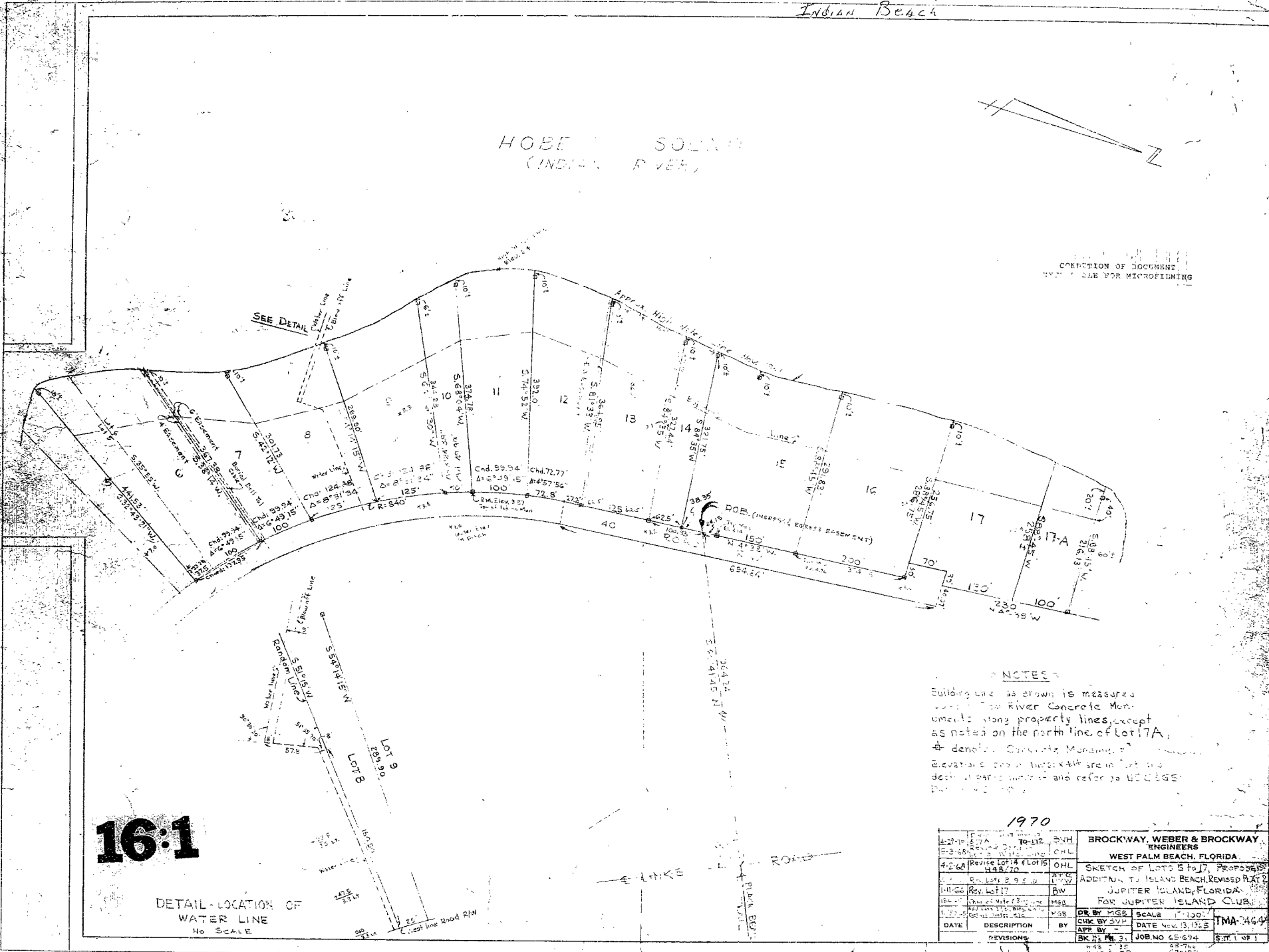


Indian Beach

HOBE SOUND
(INDIAN RIVER)



CONDITION OF DOCUMENT
NOT VALID FOR MICROFILMING



16:1

DETAIL-LOCATION OF
WATER LINE
No SCALE

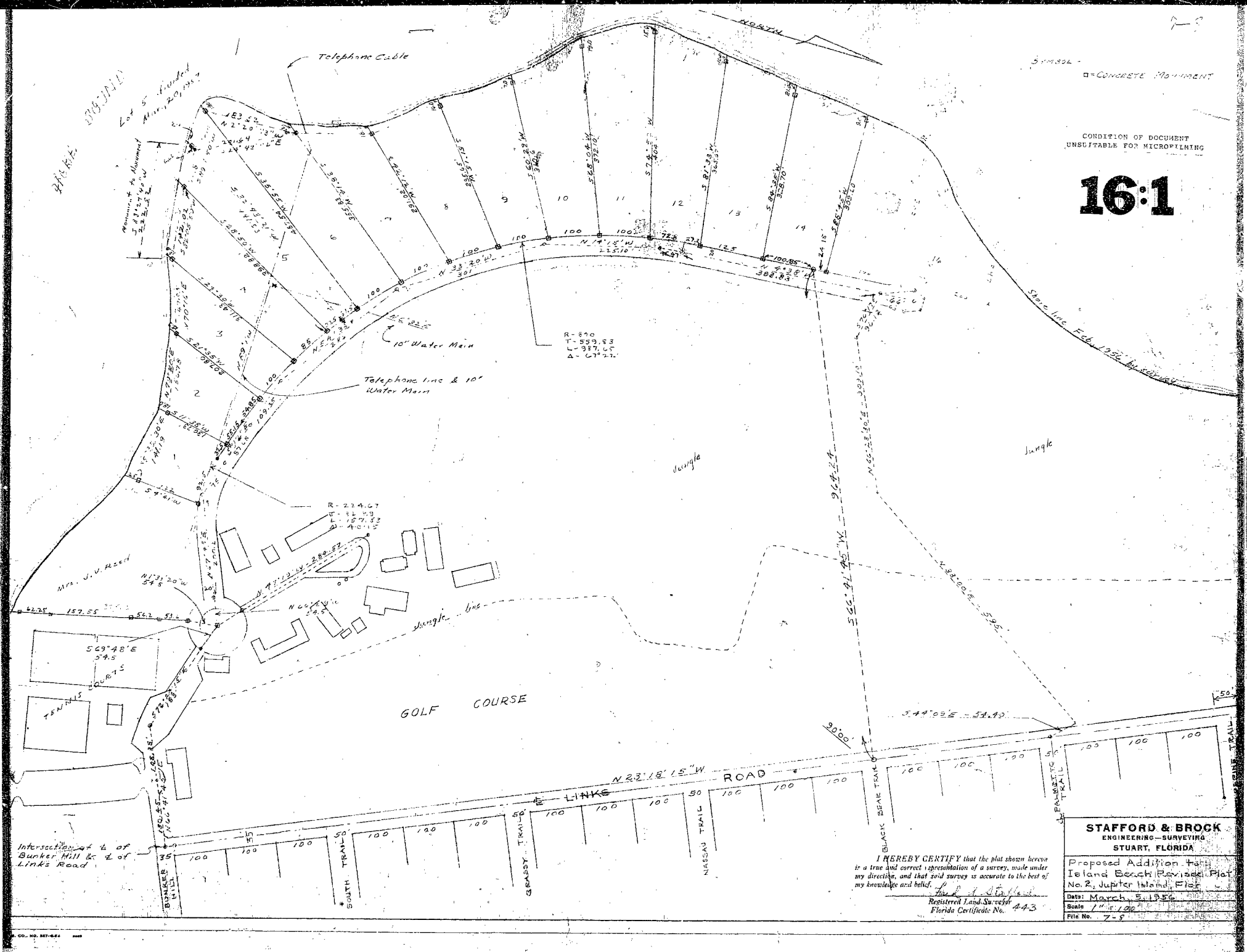
NOTES

Building line is shown as measured
along Top River Concrete Mon-
uments along property lines, except
as noted on the north line of Lot 17A.
+ denotes Concrete Monument.
Elevations are in feet MSL and
denote monument and refer to UCC LGS
Plan 1970-100.

1970

4-21-70	ETA	10-12	BWB	BROCKWAY, WEBER & BROCKWAY ENGINEERS WEST PALM BEACH, FLORIDA
4-22-70	REVISE LOT 14 (LOT 15)		OHL	
4-23-70	REV. LOT 17		BW	SKETCH OF LOTS 8 TO 17, PROPOSED ADDITION TO INDIAN BEACH, REVISED PLAN JUPITER ISLAND, FLORIDA, FOR JUPITER ISLAND CLUB.
4-24-70	REV. LOT 17		MSS	
4-25-70	REV. LOT 17		MSS	
DATE	DESCRIPTION	BY	CHK BY	SCALE
	REVISIONS			DATE
				1"=100'
				DATE Nov. 13, 1970
				TMA-464-D
				JOB NO 65-674
				SHEET 1 OF 1

LOCUS REFERENCE: BM 491 Martyr County



16:1

CONDITION OF DOCUMENT
UNSUITABLE FOR MICROFILMING

STAFFORD & BROCK
ENGINEERING-SURVEYING
STUART, FLORIDA

Proposed Addition to
Island Beach Revised Plat
No. 2, Jupiter Island, Fla.

Date: March 5, 1956
Scale: 1" = 120'
File No. 7-5

I HEREBY CERTIFY that the plat shown hereon
is a true and correct representation of a survey, made under
my direction, and that said survey is accurate to the best of
my knowledge and belief.

W. A. Stafford
Registered Land Surveyor
Florida Certificate No. 443