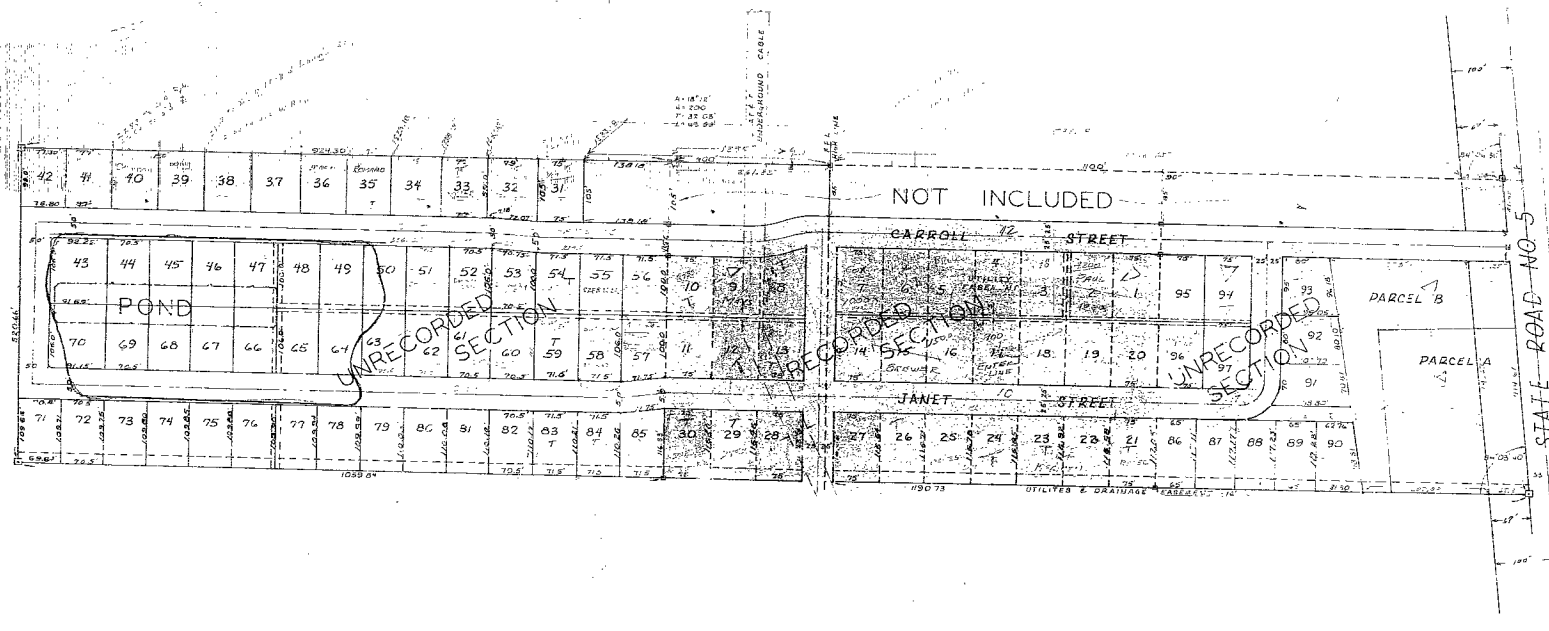


# BROWNING'S SUBDIVISION

OF  
THAT PART OF THE NORTH 2/15 OF THE SOUTH 4/15 OF  
LOTS 18, 19, & 20 OF COMMISSIONER'S SUBDIVISION OF THE  
HANSON GRANT LYING WESTERLY OF STATE ROAD NO 5

N



22:1

CONSULT THE RECORDS  
DEPARTMENT FOR MICROFILMING

REVISION	DATE	BY