

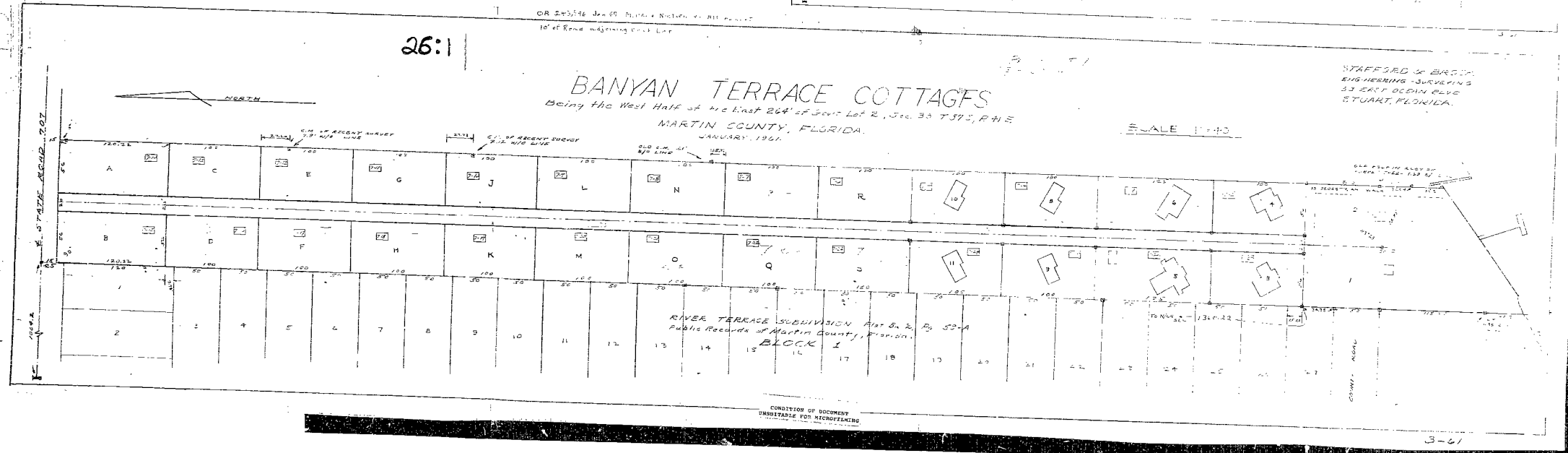
26:1

OR 27376 Jan 25 Public Records No 211 2002
10' of Road adjoining Park Lane

BANYAN TERRACE COTTAGES
Being the West Half of the East 264' of Sect Lot 2, Sec. 33 T 32 S, R 1 E
MARTIN COUNTY, FLORIDA.
JANUARY, 1961.

STAFFORD W. BROWN
ENGINEERING - SURVEYING
33 EAST OCEAN BLVD
STUART, FLORIDA.

SCALE 1"=40'



RIVER TERRACE SUBDIVISION Part 3, 2, P. 52-A
Public Records of Martin County, Florida
BLOCK 1

CONDITION OF DOCUMENT
SUITABLE FOR MICROFILMING

3-61