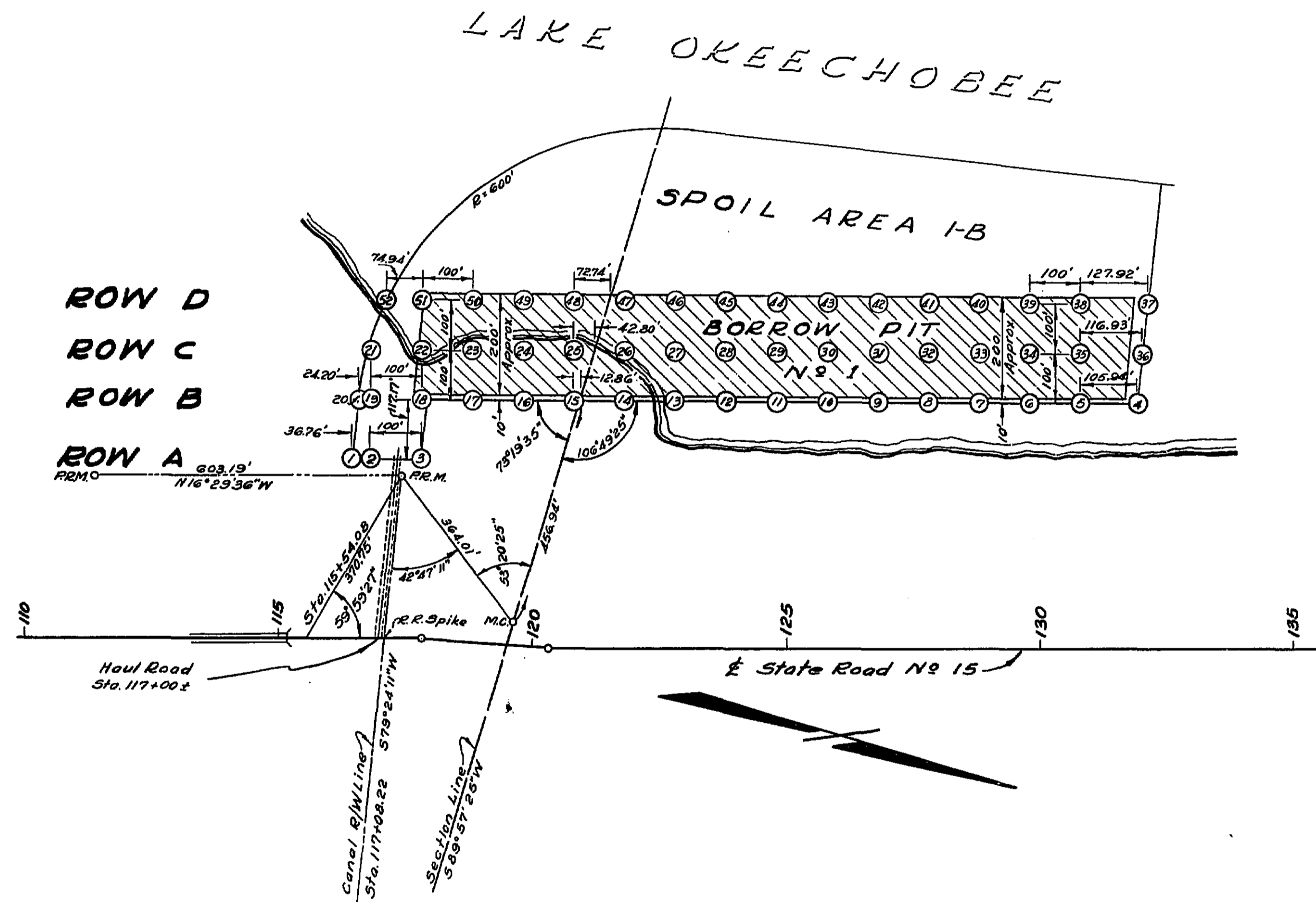


T 405 ; R 37 E

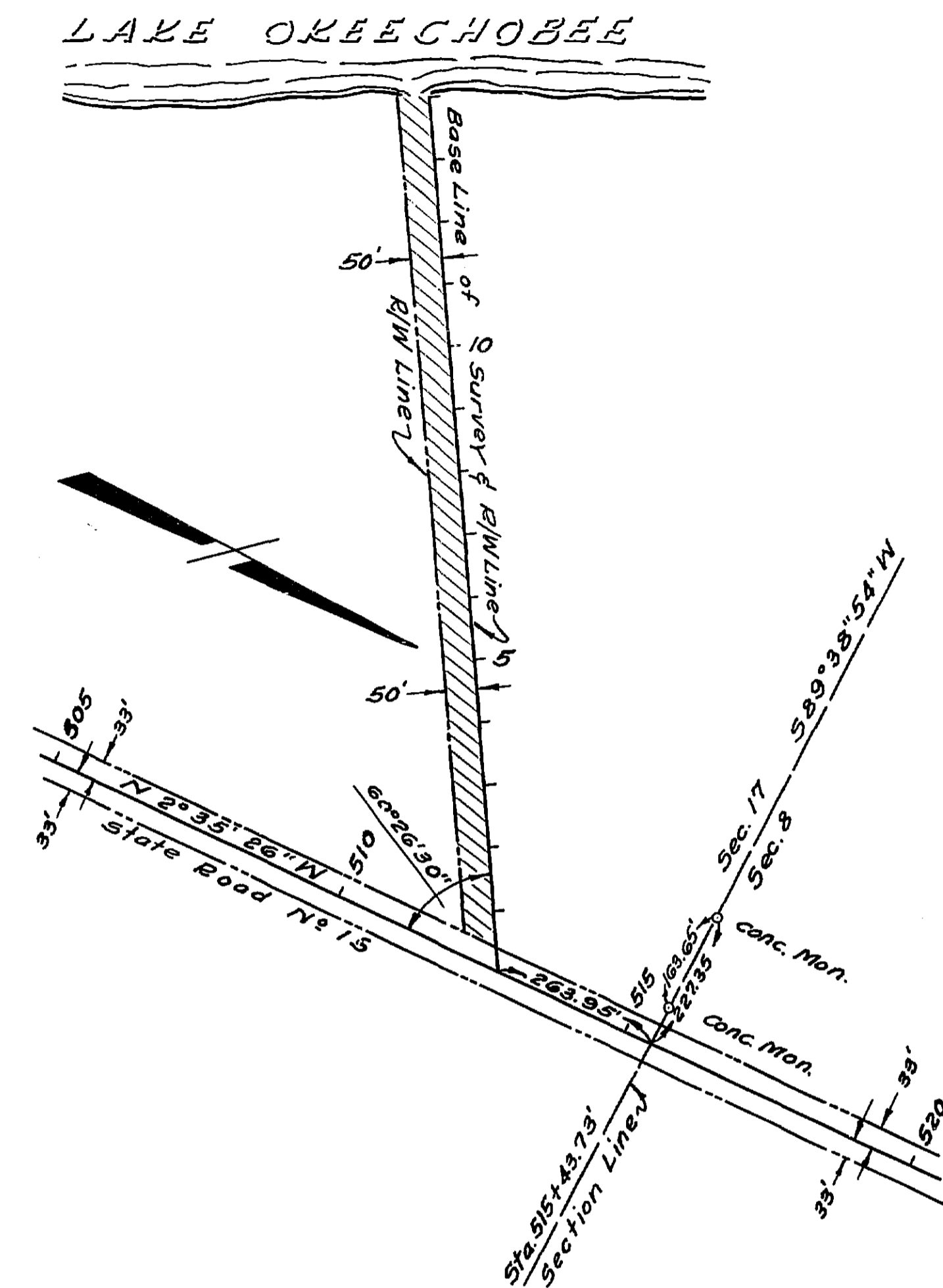


**BORROW PIT N<sup>o</sup> 1**

NOTE: - Bearings from U.S. Engineer  
Drawing 153-15344 of Sheet N<sup>o</sup> 2 of File  
302-12, 260

FED. ROAD DIV. No.	STATE	SEC. AND JOB No.	FISCAL YEAR	SHEET No.	TOTAL SHEETS
3	FLA.	8905-201	49		

T 395 ; R 37 E



**BORROW PIT N<sup>o</sup> 2**  
Bearings from 2/W  
Map of Conners Highway

STATE OF FLORIDA STATE ROAD DEPARTMENT		
<b>RIGHT OF WAY MAP</b>		
SECTION NO. 8905		
ROAD NO. 15		MARTIN COUNTY
SCALE 1" =	NAMES	DATES
DRAWN	Vansant	10-49
TRACED	Vansant	10-49
INDEXED		
REVISED		
REVISED		
APPROVED BY		DIVISION ENGINEER
		STATE HIGHWAY ENGINEER