

TOWNSHIP 39 SOUTH RANGE 40 EAST

TOWNSHIP 38 SOUTH RANGE 40 EAST



**NOTE:**  
BEARINGS ON THIS MAP ARE PROJECTED FROM SEC. 89095-2413  
- POWER POLES OWNED BY FLORIDA POWER & LIGHT COMPANY  
- TELEPHONE POLES OWNED BY SOUTHERN BELL

**LEGEND**  
○ IRON PIPE  
□ CON. MON.

UNDERGROUND TELEPHONE — SOUTHERN BELL  
L.O.A. — Limits of Construction

**NOTE:**  
CROSSING THE  
AREAS OF THE  
FA. PROJECT

FLORIDA DEPARTMENT OF TRANSPORTATION  
RIGHT OF WAY ENGINEERING SECTION

## RIGHT OF WAY MAP

STATE ROAD NO. 9 (I-95) MARTIN COUNTY

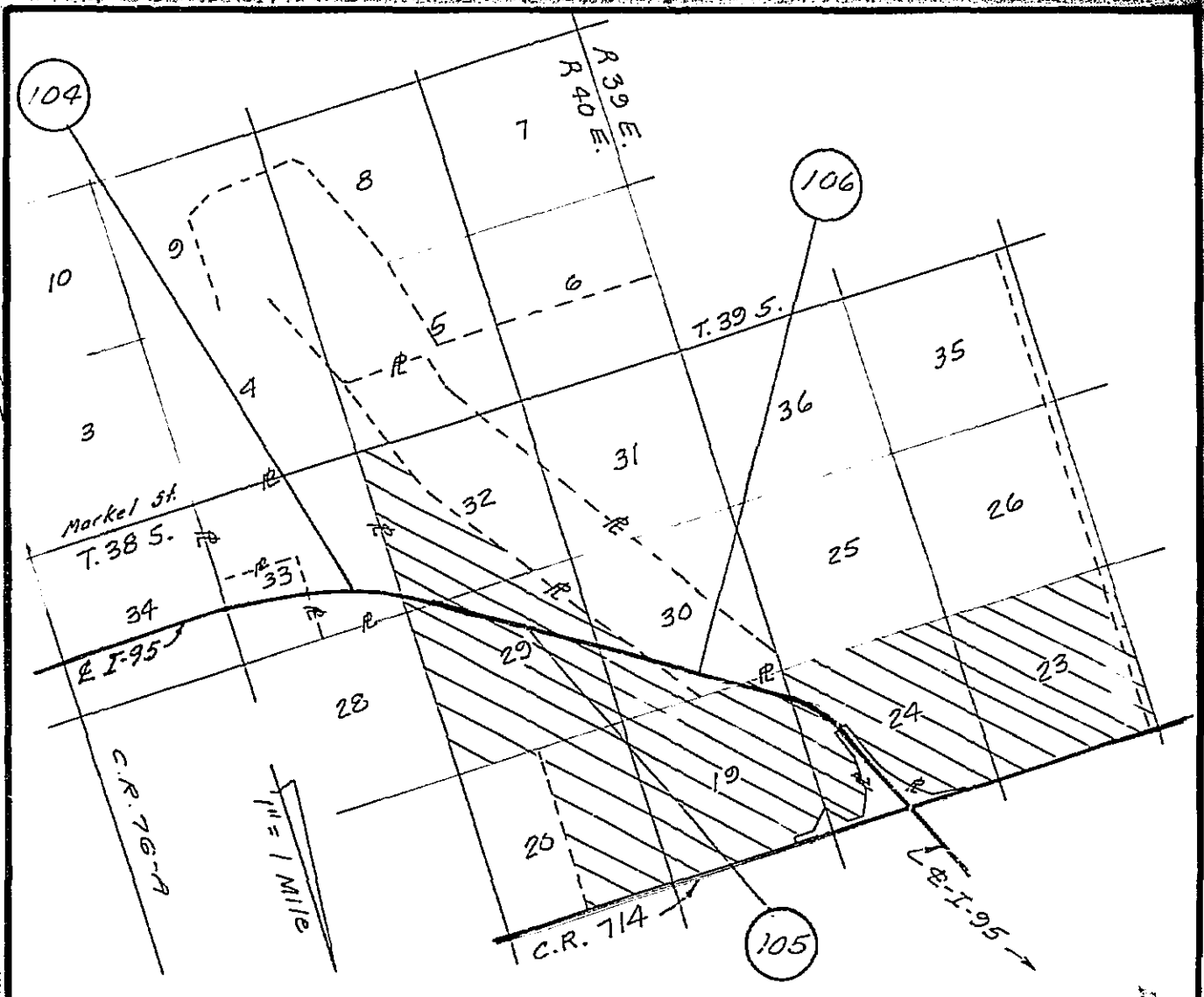
BY	DATE	APPROVED BY	DATE
DRAWN	RBS	10-19-80	
TRACED			
CHECKED	J.C.S.	11-20-80	
MAPS PREPARED BY			
2nd DISTRICT OFFICE			FIELD BOOK NO.
W.P.I. NO. 446415			SCALE 1 inch = 400 feet
SECTION 89095-2414			SHEET 1 OF

REVISION	BY	DATE
Add 2 Parcel 103	BOS	2-6-84
Rev Plat Name	SJS	1-19-84
See Sheet 104 of 105	TLS	9-18-82

REV	DATE	BY	DESCRIPTION
100	10-19-80	RBS	Initial
101	11-20-80	JCS	Check
102	2-6-84	BOS	Add 2 Parcel 103
103	1-19-84	SJS	Rev Plat Name
104	9-18-82	TLS	See Sheet 104 of 105



TOWNSHIP 38 SOUTH RANGE 40 EAST



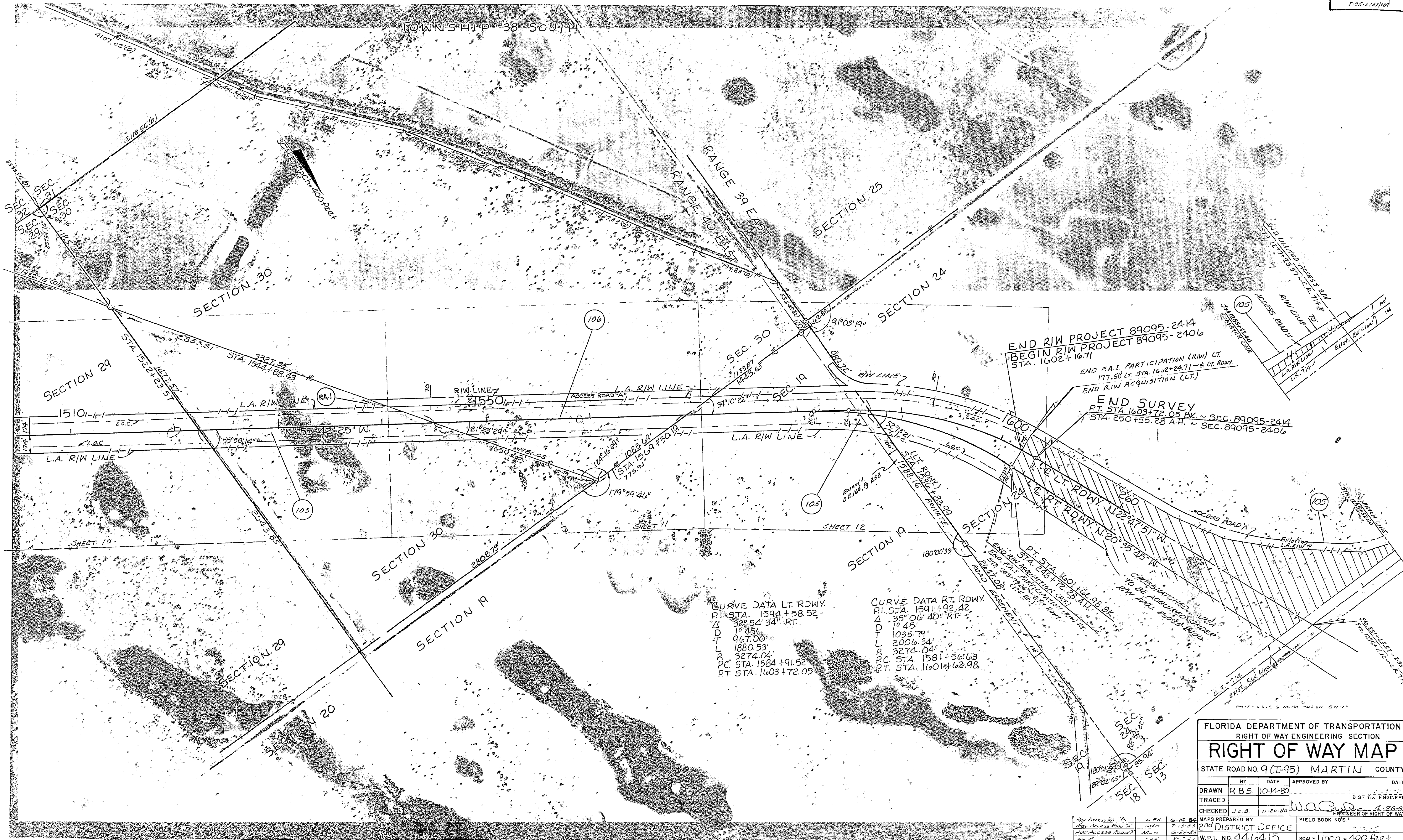
FLORIDA DEPARTMENT OF TRANSPORTATION RIGHT OF WAY ENGINEERING SECTION			
<b>RIGHT OF WAY MAP</b>			
STATE ROAD NO. 9(I-95) MARTIN COUNTY			
BY	DATE	APPROVED BY	DATE
DRAWN RBS	10-14-83		
TRACED		DIST. ENGINEER	
CHECKED	DATE	W.A.G.	DATE
			4-27-82
MAPS PREPARED BY			FIELD BOOK NOS.
C.D. DISTRICT OFFICE			020132
W.P.I. NO. 446415			SCALE 1 INCH = 400 FEET
SECTION 89095-2414			SHEET 2 OF

PARENT TRACTS OF PARCELS 104, 105, 106



TOWNSHIP 38 SOUTH

RANGE 39 EAST  
RANGE 40 EAST



END R/W PROJECT 89095-2414  
BEGIN R/W PROJECT 89095-2406  
STA. 1602+16.71

END F.A.I. PARTICIPATION (R/W) LT.  
177.50 LT. STA. 1602+24.71 - E LT. ROW.  
END R/W ACQUISITION (CT.)

END SURVEY  
PT. STA. 1603+72.05 BK. SEC. 89095-2414  
STA. 250+55.28 A.H. SEC. 89095-2406

CURVE DATA LT. RDWY.  
P.I. STA. 1594+58.52  
Δ 32° 54' 34" RT.  
D 1° 45'  
T 967.00'  
L 1880.53'  
R 3274.04'  
P.C. STA. 1584+91.52  
P.T. STA. 1603+72.05

CURVE DATA RT. RDWY.  
P.I. STA. 1591+92.42  
Δ 35° 06' 40" RT.  
D 1° 45'  
T 1035.79'  
L 2006.34'  
R 3274.04'  
P.C. STA. 1581+56.63  
P.T. STA. 1601+62.98

FLORIDA DEPARTMENT OF TRANSPORTATION  
RIGHT OF WAY ENGINEERING SECTION

### RIGHT OF WAY MAP

STATE ROAD NO. 9 (I-95) MARTIN COUNTY

BY	DATE	APPROVED BY	DATE
R.B.S.	10-14-80		

TRACED \_\_\_\_\_ DIST. ENGR.

CHECKED J.C.B. 11-20-80 *W.A.C.* 4-26-82  
ENGINEER OF RIGHT OF WAY

MAPS PREPARED BY 2nd DISTRICT OFFICE FIELD BOOK NO. 5

W.P.I. NO. 446415 SCALE 1 inch = 400 feet

SECTION 89095-2414 SHEET 3 OF

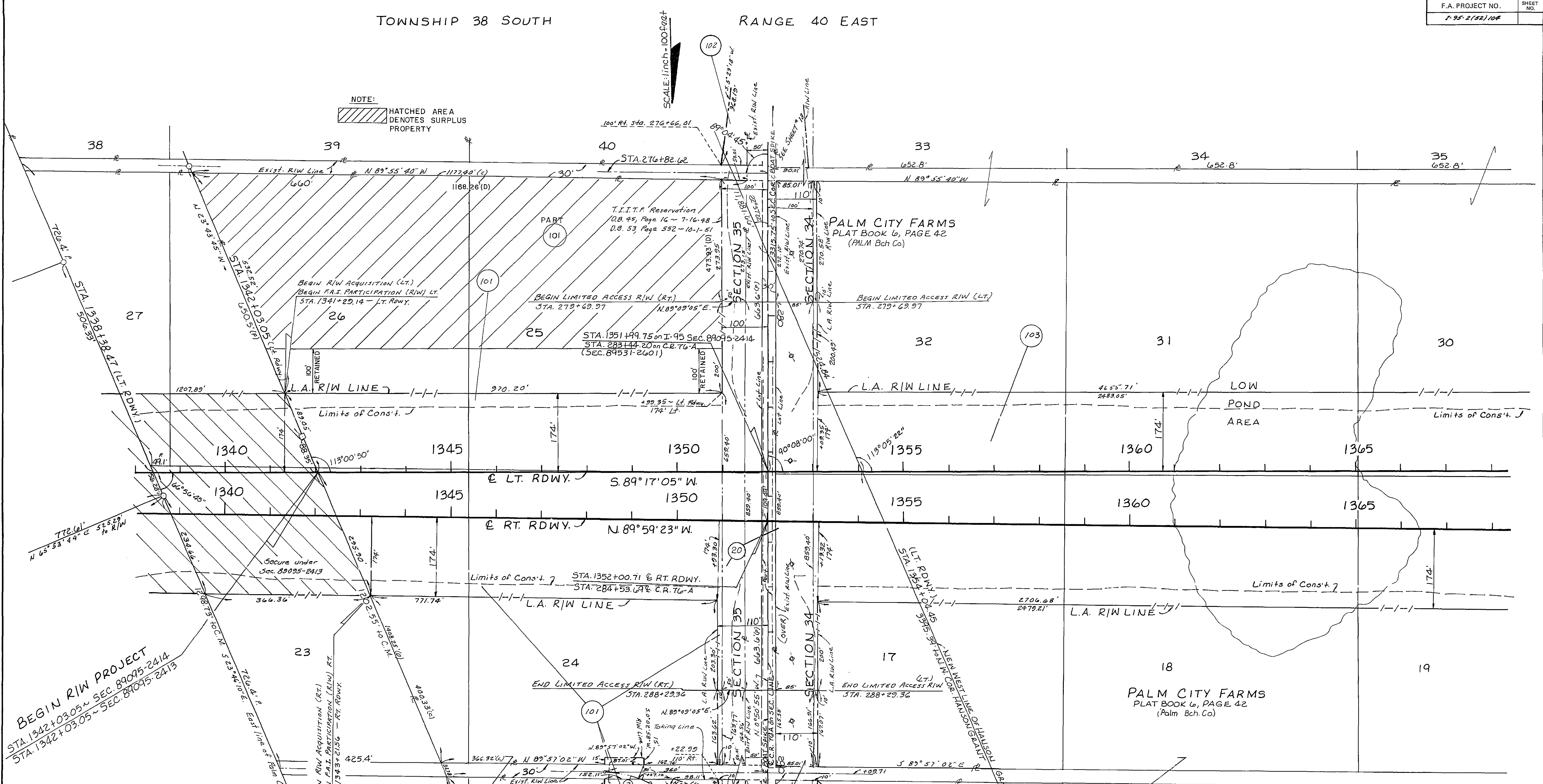
REVISION	BY	DATE
Rev Access Rd. A	M.P.H.	6-12-84
Rev Access Road B	M.P.H.	7-13-83
Rev Access Road C	M.P.H.	6-20-83
Rev A	M.P.H.	3-1-82
Rev Access Rd. A to 2016	M.P.H.	8-4-82



TOWNSHIP 38 SOUTH RANGE 40 EAST

NOTE: HATCHED AREA DENOTES SURPLUS PROPERTY

SCALE: 1 inch = 100 feet



BEGIN RIW PROJECT STA. 1342+03.05 ~ SEC. 89095-2414 STA. 1342+03.05 ~ SEC. 89095-2413

② ACCESS ROAD "B"	① ACCESS ROAD "B"
P.I. Sta. 0+34.14	P.I. Sta. 5+71.00
Δ 26°05'40"	Δ 26°59'33"
Δ 24°54'40"	Δ 38°11'50"
T 53.30'	T 36.00'
L 104.75'	L 70.67'
R 230.00'	R 150.00'
P.C. Sta. 7+80.84	P.C. Sta. 5+35.00
P.T. Sta. 8+85.53	P.T. Sta. 6+05.67

FLORIDA DEPARTMENT OF TRANSPORTATION  
RIGHT OF WAY ENGINEERING SECTION

### RIGHT OF WAY MAP

STATE ROAD NO. 9 (I-95) MARTIN COUNTY

DRAWN	R.B.S.	DATE	10-1-80	APPROVED BY	<i>William C. Lewis</i>	DATE	3-23-82
CHECKED	J.C.B.	DATE	11-20-80	TRACED	<i>W.A. Rawdon</i>	DATE	4-26-82

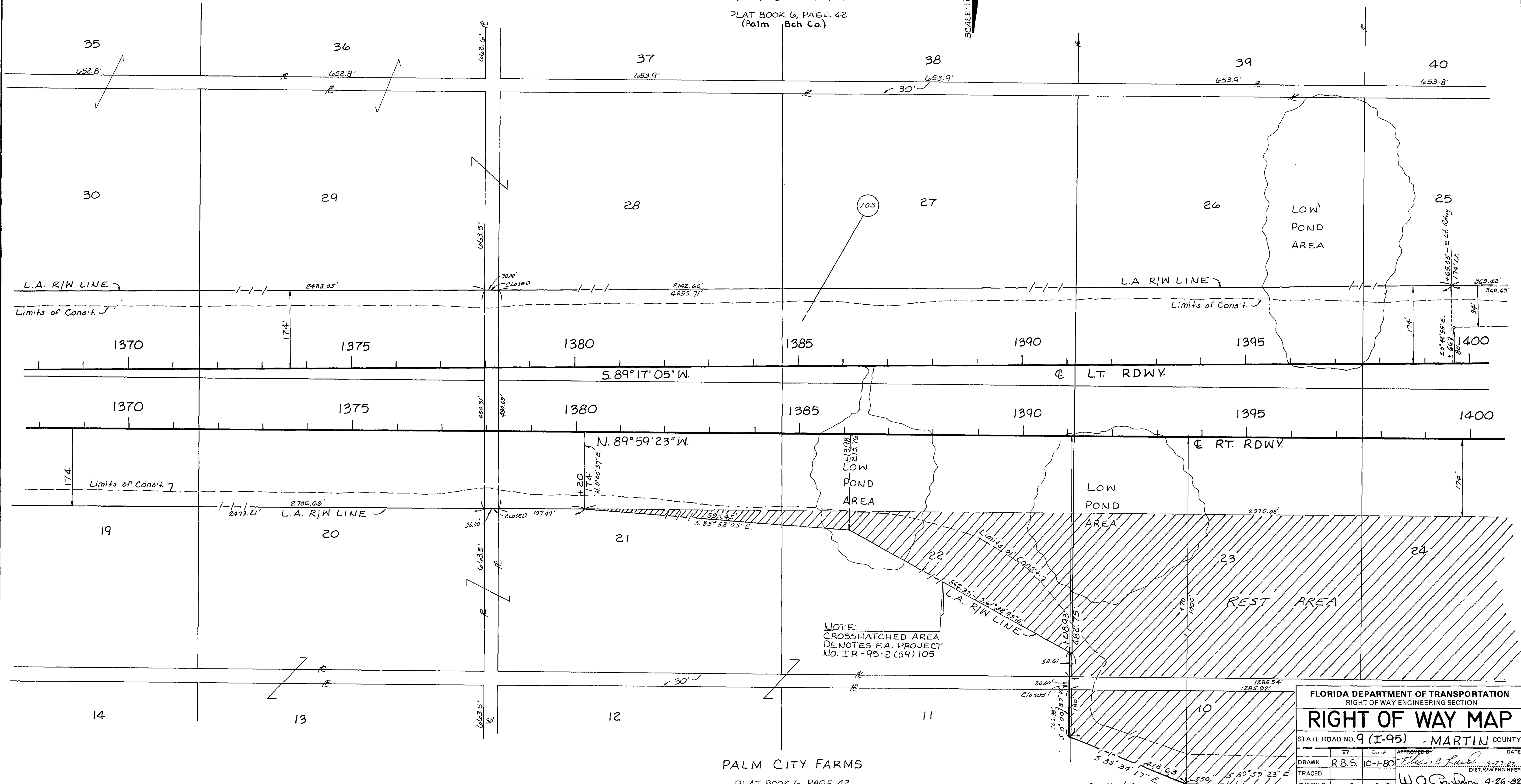
MAPS PREPARED BY: 2nd DISTRICT OFFICE  
W.P.I. NO. 446415  
SECTION 89095-2414  
SHEET 4

ADD PAR. 101 PART	L. DANO	10-13-94
ADD DEED DISTANCE PARCELS	E. WATSON	5-22-90
Add Taking Line for 101	T. L. B.	7-18-80
Rev. Plat Name: i Dist	BDS	1-19-84
Added RE	J.C.B.	8-4-82
Delete Access Rd. 75	J.C.B.	3-22-82
Rev. L.A. RIW	J.C.B.	11-28-81
REVISION	BY	DATE

TOWNSHIP 38 SOUTH RANGE 40 EAST SECTION 34

PALM CITY FARMS PLAT BOOK 6, PAGE 42 (Palm Bch Co.)

SCALE: 1 inch = 100 feet



NOTE: CROSSHATCHED AREA DENOTES F.A. PROJECT NO. IR-95-2 (54) 105

PALM CITY FARMS PLAT BOOK 6, PAGE 42 (Palm Bch Co.)

**FLORIDA DEPARTMENT OF TRANSPORTATION**  
RIGHT OF WAY ENGINEERING SECTION

**RIGHT OF WAY MAP**

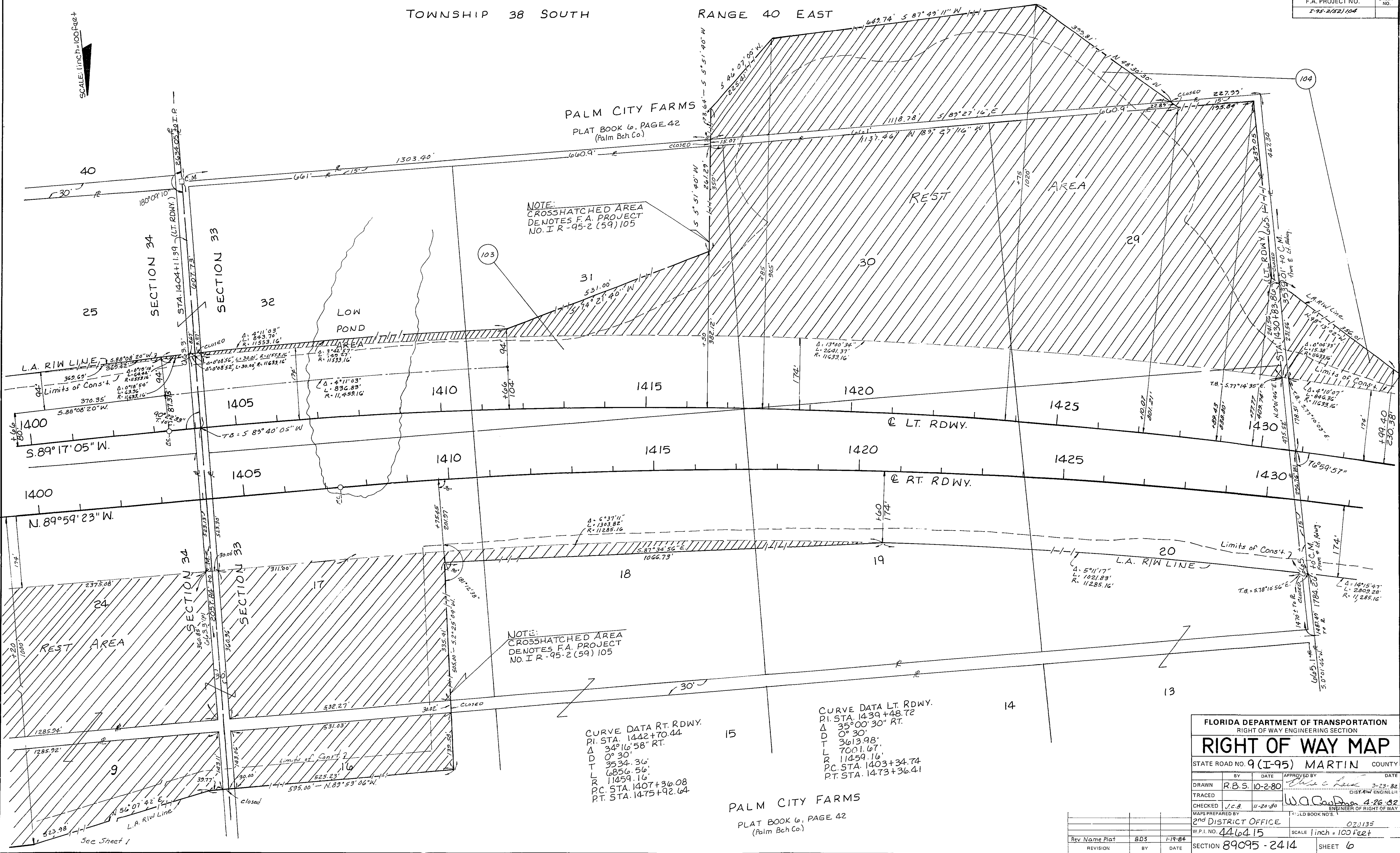
STATE ROAD NO. 9 (I-95) - MARTIN COUNTY

DRAWN	R.B.S.	DATE	10-1-80	APPROVED BY	<i>Chris C. Paul</i>	DATE	3-23-82
TRACED							DIST. R/W ENGINEER
CHECKED	J.C.B.	DATE	11-20-80		<i>W.A. Gaudin</i>	DATE	4-26-82
MAPS PREPARED BY		2 <sup>ND</sup> DISTRICT OFFICE		FIELD BOOK NO'S.		020135	
W.P.I. NO. 446415		SCALE 1 inch = 100 feet		SECTION 89095-2414		SHEET 5	

Rev. Name Plat	R.B.S.	1-19-84
Add Note	R.B.S.	3-26-82
REVISION	BY	DATE



SCALE: 1 inch = 100 feet



PALM CITY FARMS  
 PLAT BOOK 6, PAGE 42  
 (Palm Bch Co.)

NOTE:  
 CROSSHATCHED AREA  
 DENOTES F.A. PROJECT  
 NO. I R-95-2 (59) 105

NOTE:  
 CROSSHATCHED AREA  
 DENOTES F.A. PROJECT  
 NO. I R-95-2 (59) 105

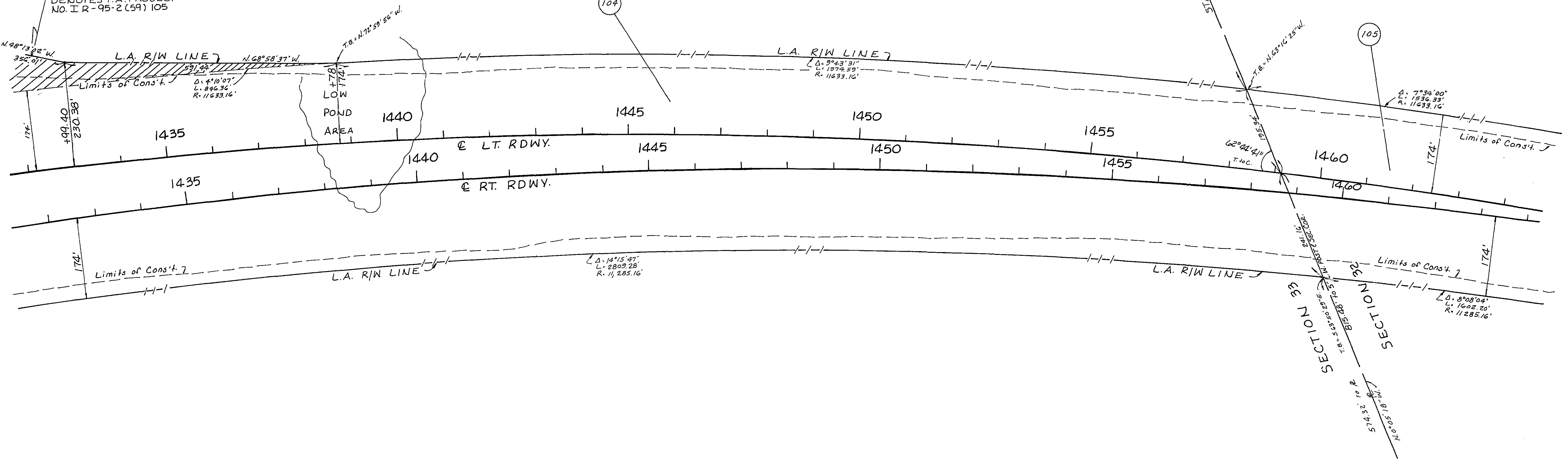
CURVE DATA LT. RDWY.  
 PI. STA. 1439+48.72  
 Δ 35°00'30" RT.  
 D 0°30'  
 T 3613.98'  
 L 7001.67'  
 R 11459.16'  
 PC STA. 1403+34.74  
 PT. STA. 1473+36.41

PALM CITY FARMS  
 PLAT BOOK 6, PAGE 42  
 (Palm Bch Co.)

FLORIDA DEPARTMENT OF TRANSPORTATION			
RIGHT OF WAY ENGINEERING SECTION			
<b>RIGHT OF WAY MAP</b>			
STATE ROAD NO. 9 (I-95) MARTIN COUNTY			
BY	DATE	APPROVED BY	DATE
R.B.S.	10-2-80	<i>W.A. Paulina</i>	3-23-82
DRAWN			DIST. ENG. 3-23-82
TRACED			
CHECKED	J.C.B.	11-20-80	ENGINEER OF RIGHT OF WAY
MAPS PREPARED BY	2 <sup>ND</sup> DISTRICT OFFICE		
W.P.I. NO.	446415	SCALE	1 inch = 100 feet
SECTION	89095-2414	SHEET	6

SCALE: 1"=100'-0"

NOTE:  
CROSSHATCHED AREA  
DENOTES F.A. PROJECT  
NO. I R-95-2 (59) 105



CURVE DATA RT. RDWY.  
P.I. STA. 1442+70.44  
Δ 34°16'58" RT.  
D 0° 30'  
T 3534.36'  
L 6856.56'  
R 11459.16'  
P.C. STA. 1407+36.08  
P.T. STA. 1475+92.64

CURVE DATA LT. RDWY.  
P.I. STA. 1439+48.72  
Δ 35°00' 30" RT.  
D 0° 30'  
T 3613.98'  
L 7001.67'  
R 11459.16'  
P.C. STA. 1403+34.74  
P.T. STA. 1473+36.41

FLORIDA DEPARTMENT OF TRANSPORTATION			
RIGHT OF WAY ENGINEERING SECTION			
<b>RIGHT OF WAY MAP</b>			
STATE ROAD NO. 9 (I-95) MARTIN COUNTY			
BY	DATE	APPROVED BY	DATE
R.B.S.	10-2-80	<i>Elias C. Lead</i>	3-23-82
TRACED			DIST. R/W ENGINEER
CHECKED	J.C.B.	11-20-80	<i>W.A.P.</i> 4-26-82
MAPS PREPARED BY			FIELD BOOK NO. S.
2nd DISTRICT OFFICE			020135
W.P.I. NO. 446415			SCALE 1"=100 feet
SECTION 89095-2414			SHEET 7

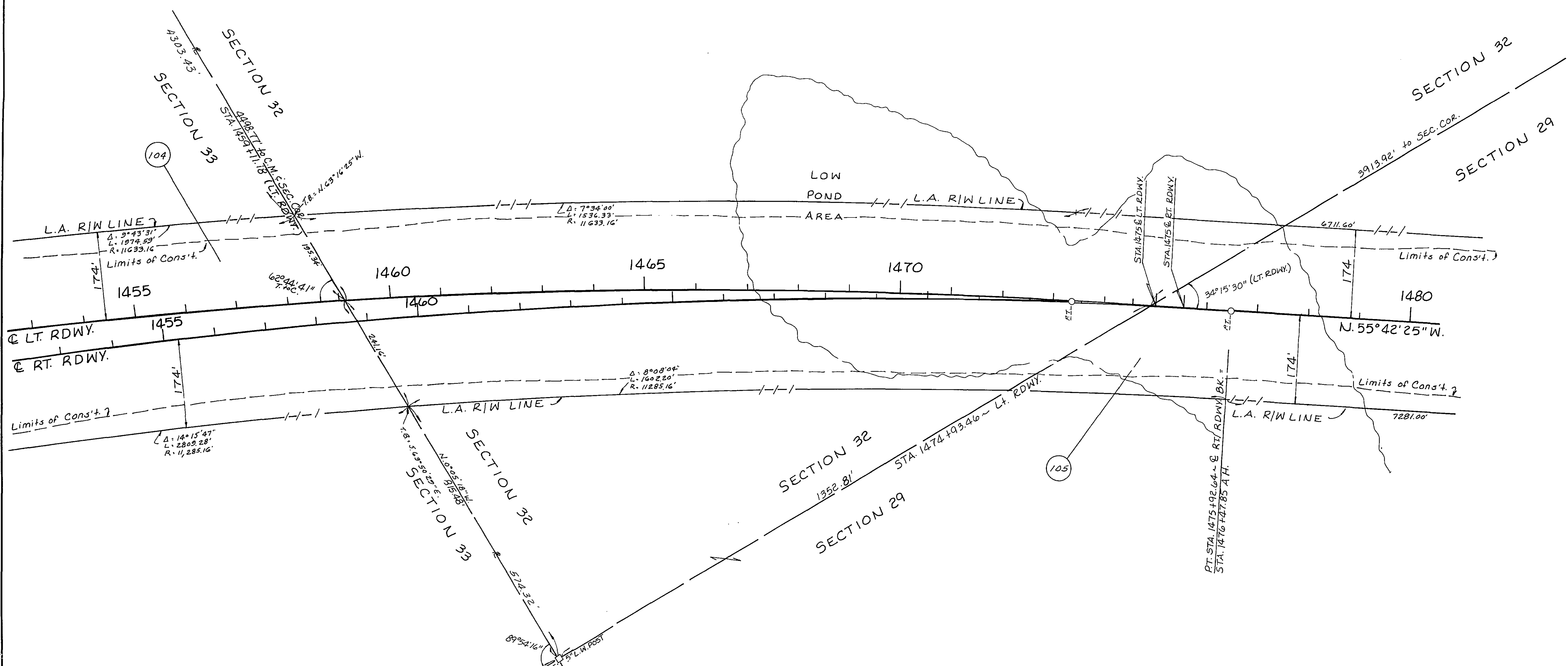
REVISION	BY	DATE

POLYTRACE 033

TOWNSHIP 38 SOUTH

RANGE 40 EAST

SCALE: 1" = 100 FEET



CURVE DATA RT. RDWY.  
 P.I. STA. 1442+70.44  
 $\Delta = 34^\circ 16' 58''$  RT.  
 D  $0^\circ 30'$   
 T 3534.36'  
 L 6856.56'  
 R 11459.16'  
 P.C. STA. 1407+36.08  
 P.T. STA. 1475+92.64

CURVE DATA LT. RDWY.  
 P.I. STA. 1439+48.72  
 $\Delta = 35^\circ 00' 30''$  RT.  
 D  $0^\circ 30'$   
 T 3613.98'  
 L 7001.67'  
 R 11459.16'  
 P.C. STA. 1403+34.74  
 P.T. STA. 1473+36.41

FLORIDA DEPARTMENT OF TRANSPORTATION			
RIGHT OF WAY ENGINEERING SECTION			
<b>RIGHT OF WAY MAP</b>			
STATE ROAD NO. 9 (I-95) MARTIN COUNTY			
DRAWN	BY	DATE	APPROVED BY
R.B.S.		10-2-80	<i>John C. Ford</i>
TRACED			DIST. R/W ENGINEER
CHECKED	J.C.B.	11-20-80	<i>W.A. Gagnier</i>
MAPS PREPARED BY		ELD BOOK NO'S.	
2 <sup>nd</sup> DISTRICT OFFICE		020135	
W.P.I. NO. 446415		SCALE 1 inch = 100 feet	
SECTION	89095-2414	SHEET	8

REVISION	BY	DATE

POLYTRACE 033



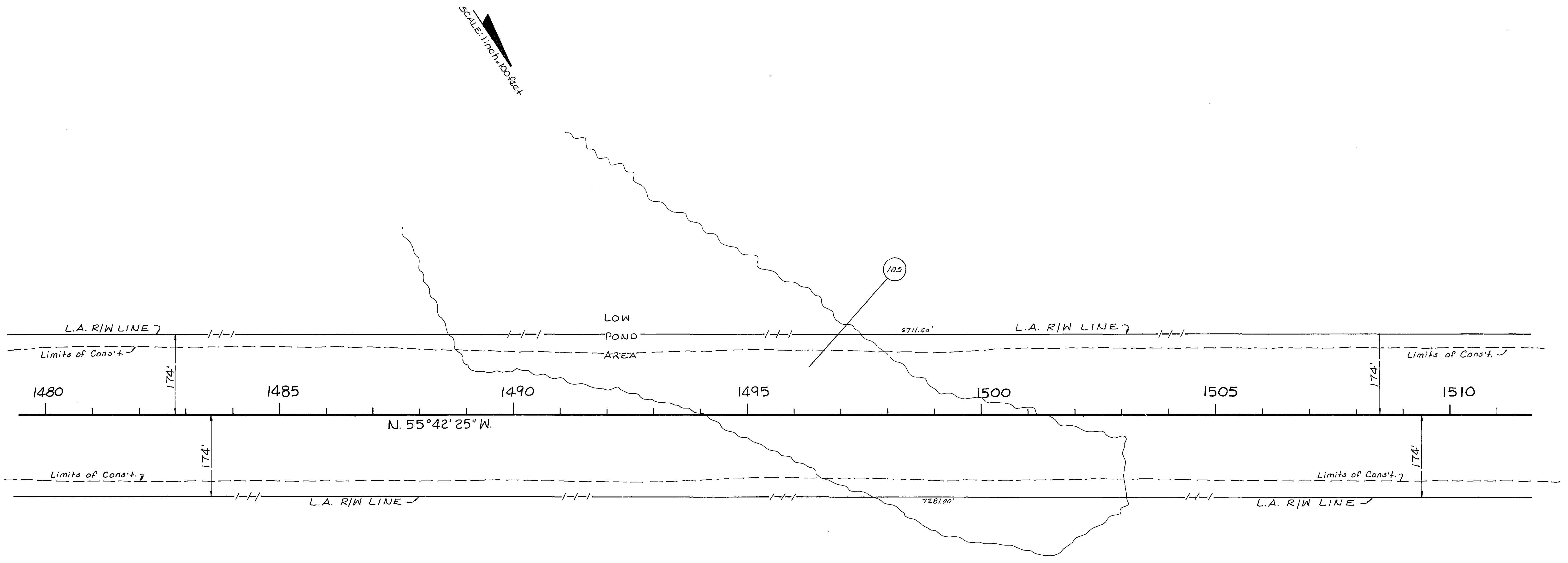
TOWNSHIP 38 SOUTH

RANGE 40 EAST

SECTION 29

F.A. PROJECT NO. 1-95-2(52)104 SHEET NO.

SCALE: 1 inch = 100 feet

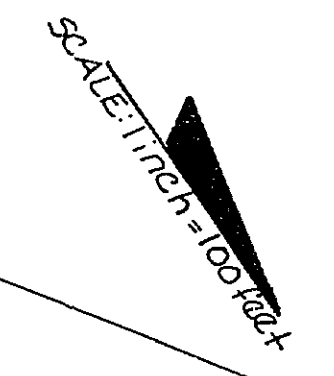


FLORIDA DEPARTMENT OF TRANSPORTATION RIGHT OF WAY ENGINEERING SECTION			
<b>RIGHT OF WAY MAP</b>			
STATE ROAD NO. 9 (I-95)		MARTIN COUNTY	
DRAWN	R.B.S.	DATE	10-2-80
TRACED	J.C.B.	DATE	11-20-80
CHECKED	J.C.B.	DATE	11-20-80
MAPS PREPARED BY		FIELD BOOK NO'S.	
2 <sup>nd</sup> DISTRICT OFFICE		020135	
W.P.I. NO. 446415		SCALE 1 inch = 100 feet	
SECTION 89095-2414			SHEET 9

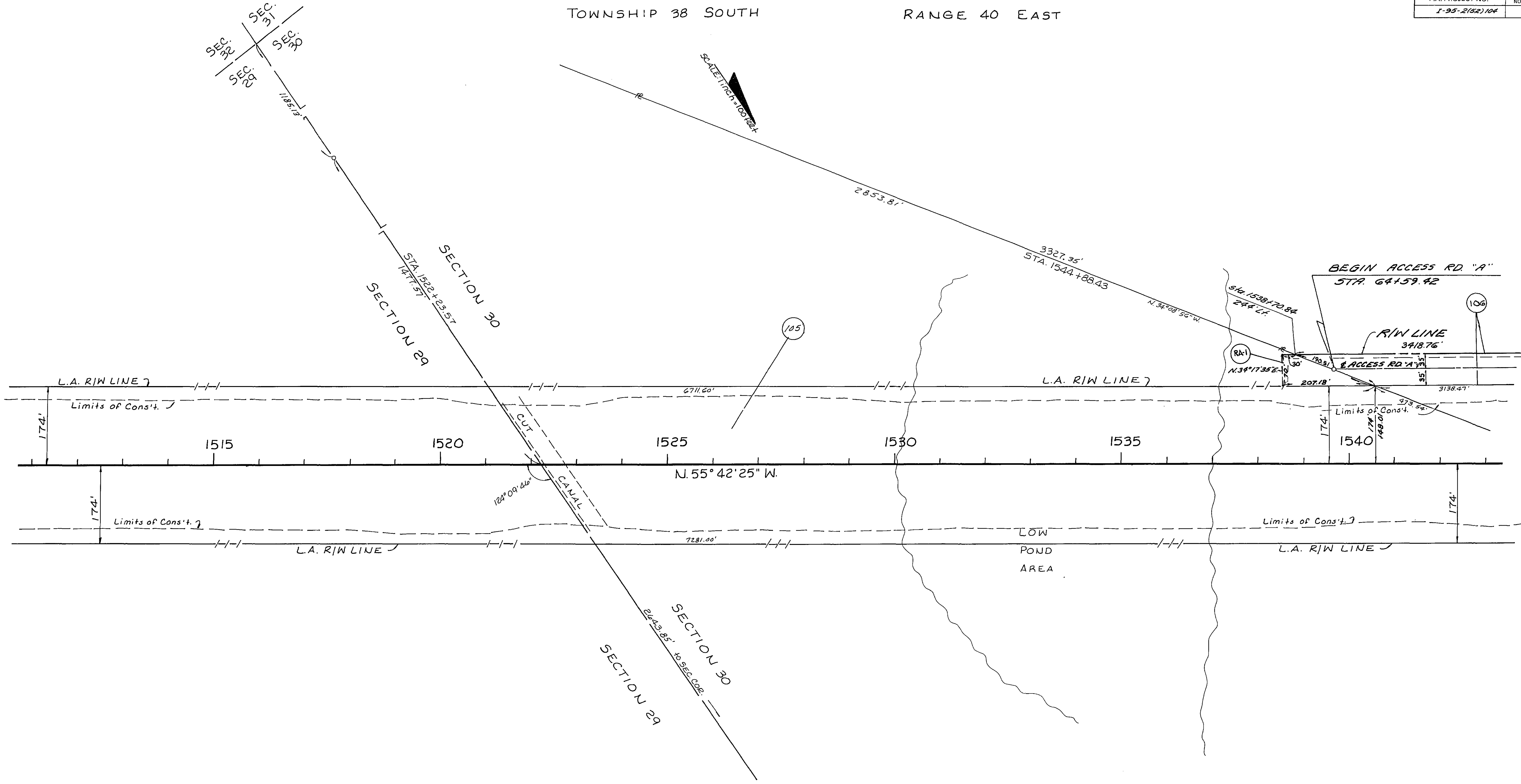
POLYTRACE 033



TOWNSHIP 38 SOUTH RANGE 40 EAST



SEC. 32 SEC. 31  
SEC. 29 SEC. 30



**FLORIDA DEPARTMENT OF TRANSPORTATION**  
RIGHT OF WAY ENGINEERING SECTION

**RIGHT OF WAY MAP**

STATE ROAD NO. 9 (I-95) MARTIN COUNTY

BY	DATE	APPROVED BY	DATE
R.B.S.	10-2-80	<i>Chris C. Ford</i>	9-22-80
TRACED			
CHECKED	J.C.B. 11-20-80	<i>W.A.P.</i>	4-26-82

MAPS PREPARED BY: 2<sup>nd</sup> DISTRICT OFFICE  
FIELD BOOK NO'S: 020135

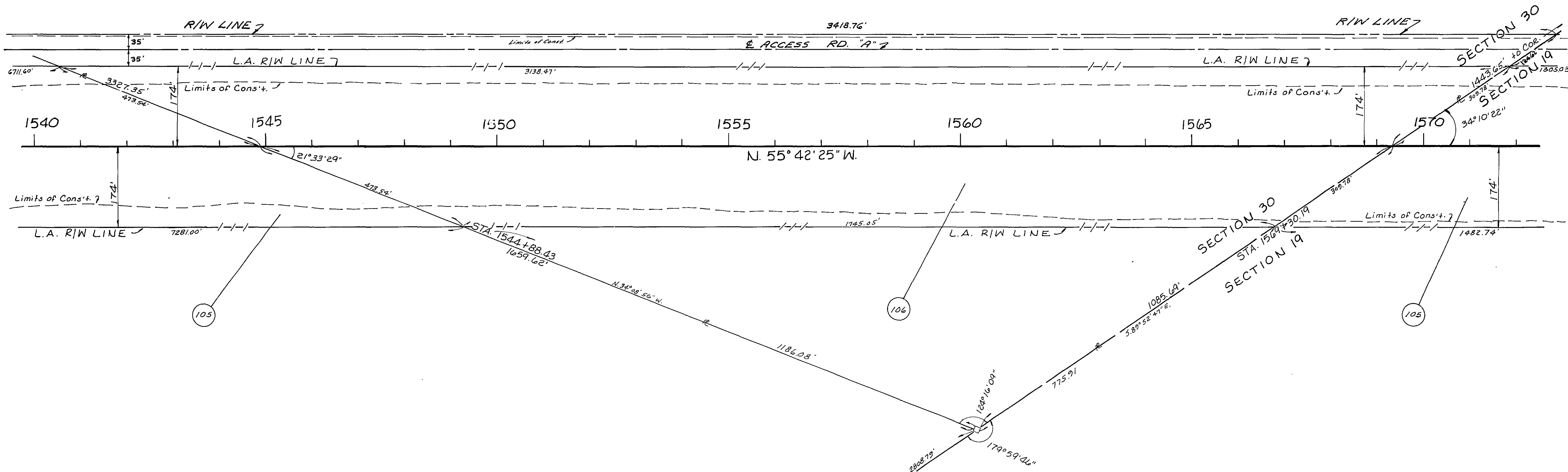
W.P.I. NO. 446415 SCALE 1 inch = 100 feet

REVISION	BY	DATE	SECTION 89095-2414	SHEET 10
----------	----	------	--------------------	----------

POLYTRAC 03



SCALE 1 inch = 100 feet

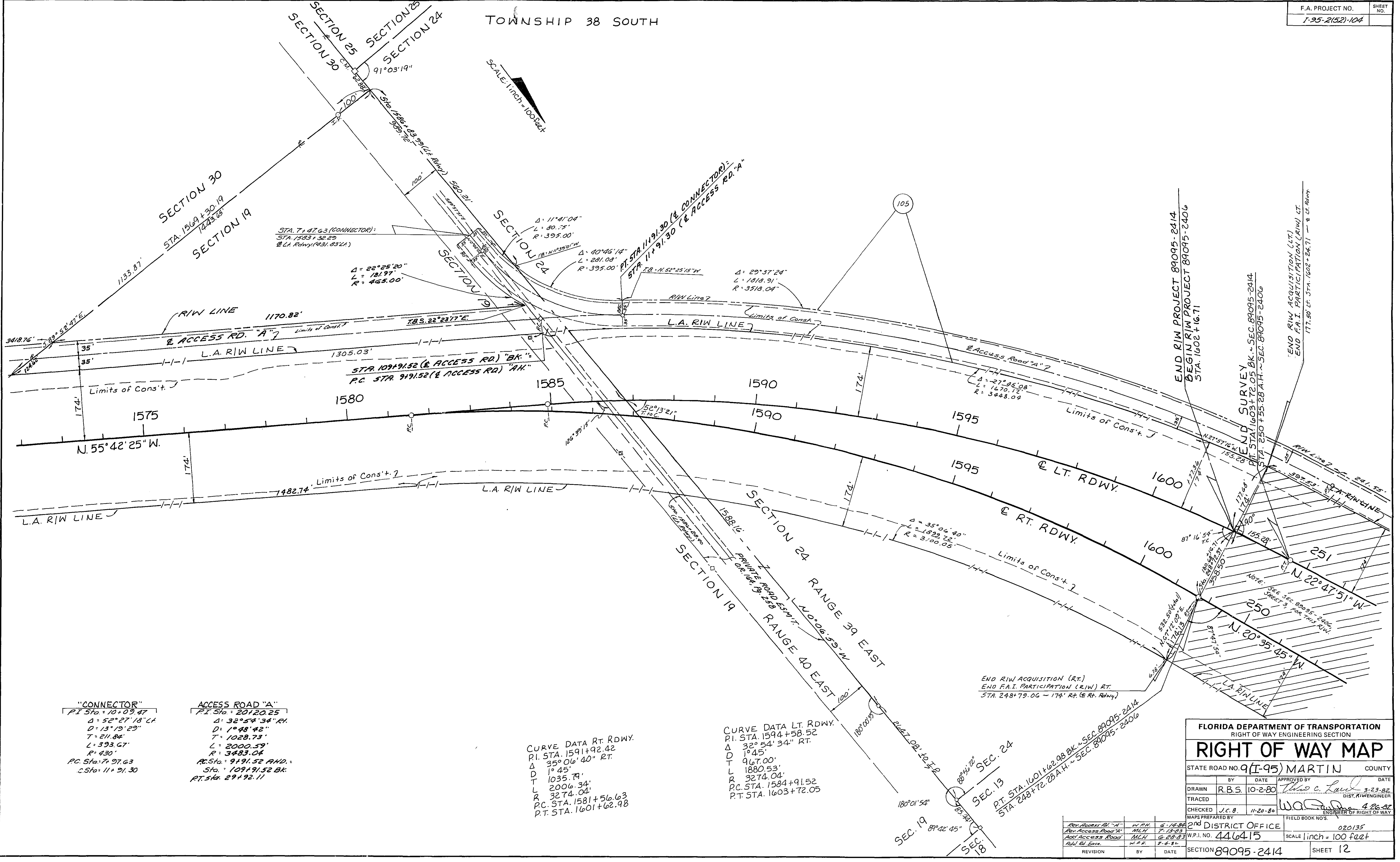
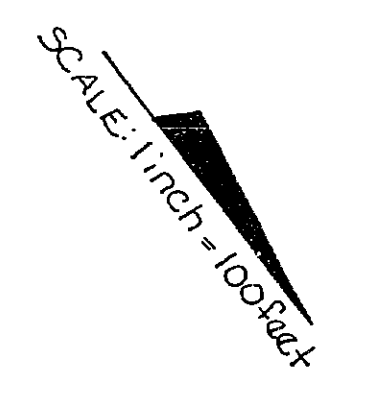


FLORIDA DEPARTMENT OF TRANSPORTATION			
RIGHT OF WAY ENGINEERING SECTION			
<b>RIGHT OF WAY MAP</b>			
STATE ROAD NO. 9(I-95) MARTIN COUNTY			
BY	DATE	APPROVED BY	DATE
R.B.S.	10-2-80	<i>[Signature]</i>	3-22-82
TRACED			DIST. R/W ENGINEER
CHECKED	J.C.B. 11-20-80	<i>[Signature]</i>	4-26-82
MAPS PREPARED BY			FIELD BOOK NO'S.
2nd DISTRICT OFFICE			020135
W.P.I. NO. 446415			SCALE 1 inch = 100 feet
REVISION	BY	DATE	SECTION 89095-2414 SHEET 11

POLYTRACE 03



TOWNSHIP 38 SOUTH



**"CONNECTOR"**  
 P.I. Sta. = 10+09.47  
 Δ = 52° 27' 18" LT  
 D = 13° 19' 29"  
 T = 211.84'  
 L = 393.67'  
 R = 430'  
 P.C. Sta. = 7+27.63  
 C. Sta. = 11+21.30

**ACCESS ROAD "A"**  
 P.I. Sta. = 20+20.25  
 Δ = 32° 54' 34" RT  
 D = 1° 48' 42"  
 T = 1028.73'  
 L = 2000.59'  
 R = 3483.04'  
 P.C. Sta. = 9+191.52 AHD.  
 Sta. = 109+191.52 BK.  
 P.T. Sta. = 29+192.11

**CURVE DATA RT. RDWY.**  
 P.I. STA. 1591+92.42  
 Δ = 35° 06' 40" RT.  
 D = 1° 45'  
 T = 1035.79'  
 L = 2006.34'  
 R = 3274.04'  
 P.C. STA. 1581+56.63  
 P.T. STA. 1601+62.98

**CURVE DATA LT. RDWY.**  
 P.I. STA. 1594+58.52  
 Δ = 32° 54' 34" RT.  
 D = 1° 45'  
 T = 967.00'  
 L = 1880.53'  
 R = 3274.04'  
 P.C. STA. 1584+91.52  
 P.T. STA. 1603+72.05

END R/W ACQUISITION (RT.)  
 END F.A.I. PARTICIPATION (R/W) RT.  
 STA. 248+79.06 ~ 174' RT. (E RT. RDWY.)

FLORIDA DEPARTMENT OF TRANSPORTATION RIGHT OF WAY ENGINEERING SECTION			
<b>RIGHT OF WAY MAP</b>			
STATE ROAD NO. 9(I-95) MARTIN COUNTY			
BY	DATE	APPROVED BY	DATE
DRAWN R.B.S.	10-2-80	<i>W.A. [Signature]</i>	3-23-82
TRACED		<i>W.A. [Signature]</i>	DIST. R/W ENGINEER
CHECKED J.C.B.	11-20-80	<i>W.A. [Signature]</i>	ENGINEER OF RIGHT OF WAY
MAPS PREPARED BY		FIELD BOOK NOS.	
2nd DISTRICT OFFICE		020135	
W.P.I. NO. 446415		SCALE 1 inch = 100 feet	
SECTION 89095-2414		SHEET 12	

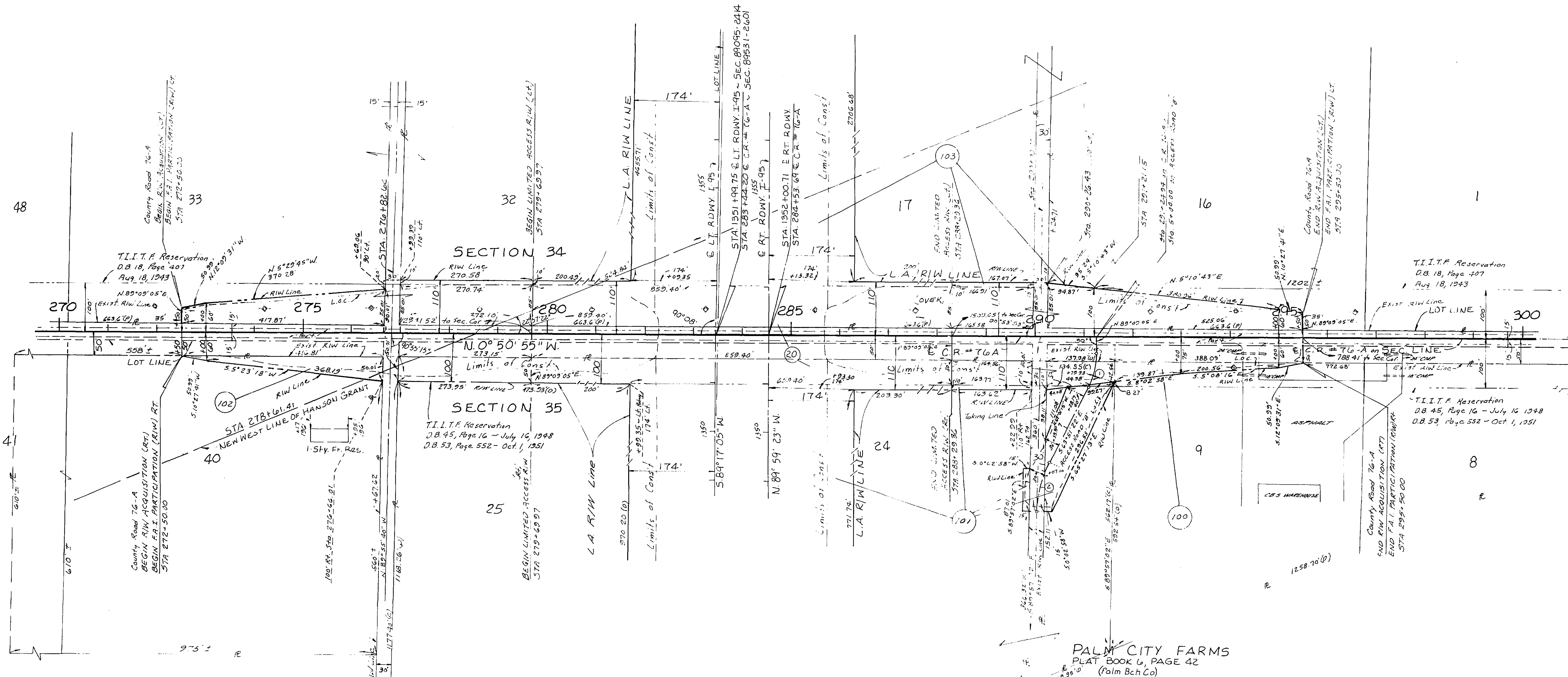
Rev. Access Rd. "A"	W.A.H.	6-14-80
Rev. Access Road "A"	M.C.H.	7-13-83
Rev. Access Road	M.C.H.	6-28-83
Rev. R/W Line	W.A.H.	7-4-81
REVISION	BY	DATE



TOWNSHIP 38 SOUTH RANGE 40 EAST

PALM CITY FARMS  
PLAT BOOK 6, PAGE 42  
(Palm Bch Co.)

SCALE: 1 inch = 100 feet



PALM CITY FARMS  
PLAT BOOK 6, PAGE 42  
(Palm Bch Co.)

- ① ACCESS ROAD 'A'  
PI STA 6+7.00  
D 26°20'33" R  
S 38°11'50"  
T 34.00'  
L 70.67'  
R 150.00'  
PC STA 5+35.00  
PT STA 6+05.67
- ② ACCESS ROAD 'B'  
PI STA 8+34.14  
D 26°05'40"  
S 34°54'40"  
T 53.30'  
L 104.75'  
R 230.00'  
PC STA 7+80.84  
PT STA 8+85.59

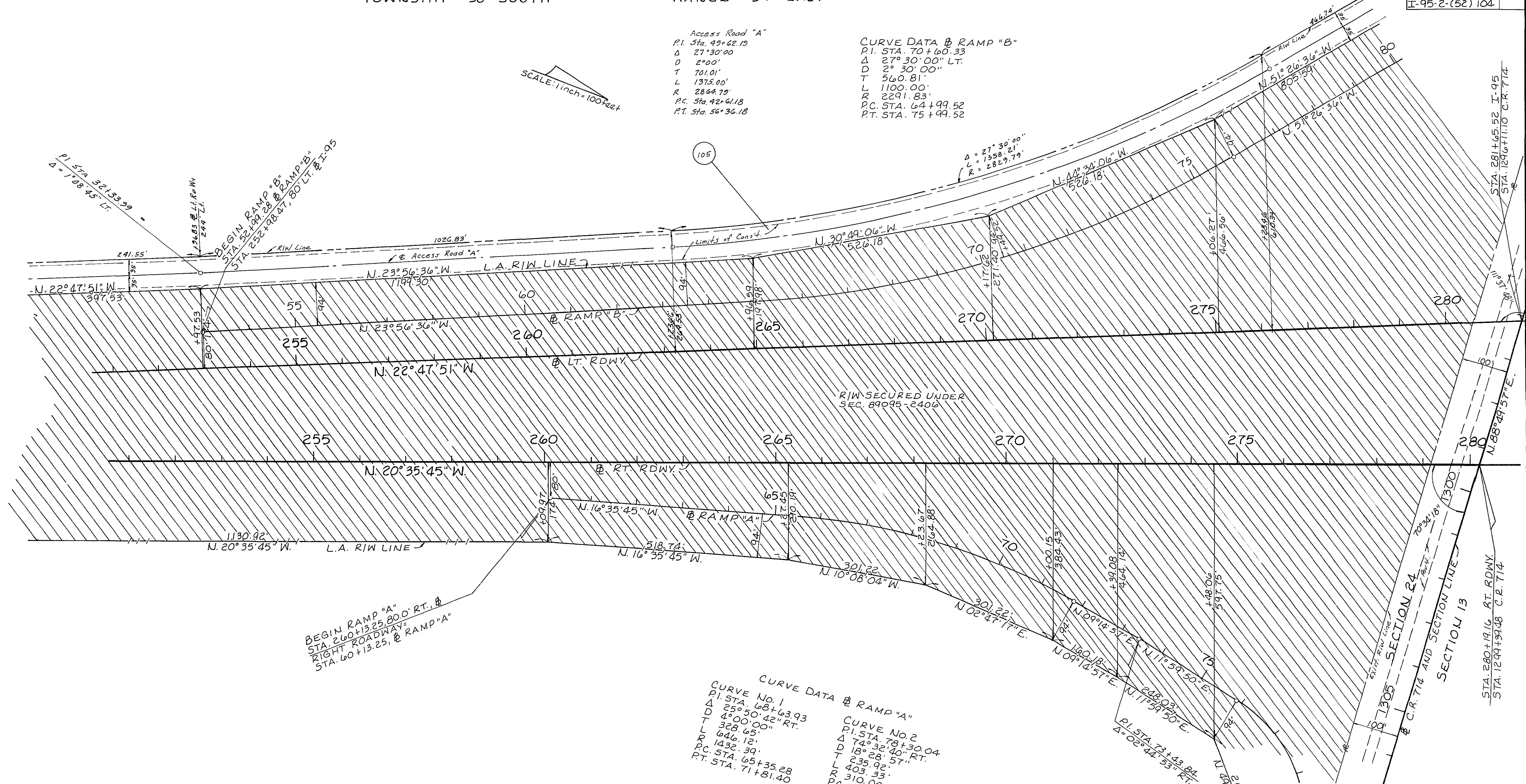
FLORIDA DEPARTMENT OF TRANSPORTATION		RIGHT OF WAY ENGINEERING SECTION 4-20-86	
<b>RIGHT OF WAY MAP</b>			
STATE ROAD NO 9(I-95)		MARTIN COUNTY	
BY	DATE	APPROVED BY	DATE
RBS	10-7-80	<i>[Signature]</i>	3-23-82
DRAWN		DIST. ENGINEER	
TRACED			
CHECKED	JCB	11-20-80	<i>[Signature]</i>
MAPS PREPARED BY		ENGINEER OF RIGHT OF WAY	
2nd DISTRICT OFFICE		426-32	
W.P.I. NO	446415	SCALE	1 inch = 100 feet
SECTION	89095-2414	SHEET	13

REVISION	BY	DATE
added "D" Distances, Aerial	E. Watson	6-11-80
Add Taking Line Part 101	T.L.B.	7-18-80
Rev Name Plat 1 Dist	BDS	1-18-84
Rev Name Plat 1 Dist	D.S.	1-1-83
Rev Name Plat 1 Dist	D.S.	0-15-82
Rev Name Plat 1 Dist	M.P.H.	8-8-82
Rev Name Plat 1 Dist	J.S.B.	3-27-82
Rev Name Plat 1 Dist	J.S.B.	12-28-81

Access Road "A"  
 P.I. Sta. 49+62.19  
 Δ 27°30'00"  
 D 2°00'  
 T 701.01'  
 L 1375.00'  
 R 2864.79'  
 P.C. Sta. 42+61.18  
 P.T. Sta. 56+36.18

CURVE DATA RAMP "B"  
 P.I. STA. 70+60.33  
 Δ 27°30'00" LT.  
 D 2°30'00"  
 T 560.81'  
 L 1100.00'  
 R 2291.83'  
 P.C. STA. 64+99.52  
 P.T. STA. 75+99.52

SCALE: 1 inch = 100 feet



BEGIN RAMP "A"  
 STA. 260+13.25, 800' RT., R.  
 RIGHT ROADWAY  
 STA. 60+13.25, RAMP "A"

CURVE DATA RAMP "A"  
 CURVE NO. 1  
 P.I. STA. 68+63.93  
 Δ 25°50'42" RT.  
 D 4°00'00"  
 T 328.65'  
 L 646.12'  
 R 1432.39'  
 P.C. STA. 65+35.28  
 P.T. STA. 71+81.40

CURVE NO. 2  
 P.I. STA. 78+30.04  
 Δ 74°32'40" RT.  
 D 18°28'57"  
 T 235.92'  
 L 403.33'  
 R 310.00'  
 P.C. STA. 75+94.12  
 P.T. STA. 79+97.45

FLORIDA DEPARTMENT OF TRANSPORTATION  
 RIGHT OF WAY ENGINEERING SECTION

### RIGHT OF WAY MAP

STATE ROAD NO. (I-95)9 MARTIN COUNTY

BY	DATE	APPROVED BY	DATE
R.B.S.	10-6-80	E.C. Lord	

TRACED BY: J.C.B. 7-10-81  
 CHECKED BY: J.C.B. 7-10-81  
 DISTRICT ENGINEER: E.C. Lord  
 ENGINEER OF RIGHT OF WAY: J.C.B. 6/30/83

MAPS PREPARED BY: 2nd DISTRICT OFFICE  
 W.P.I. NO. 446415  
 SCALE: 1 inch = 100 feet

SECTION 89095-2414 SHEET 14



Access Rd "A"	Access Rd "A"
PI STA 69+101.72	PI STA 73+94.04
Δ 34°45'02" Lt.	Δ 85°09'35" Rt.
D 6'	D 114°35'30"
T 29880'	T 4594'
L 579.18'	L 74.31'
R 95493'	R 50.00'
PC STA 61+0292	PC STA 73+48.10
PT STA 66+82.10	PT STA 74+22.41

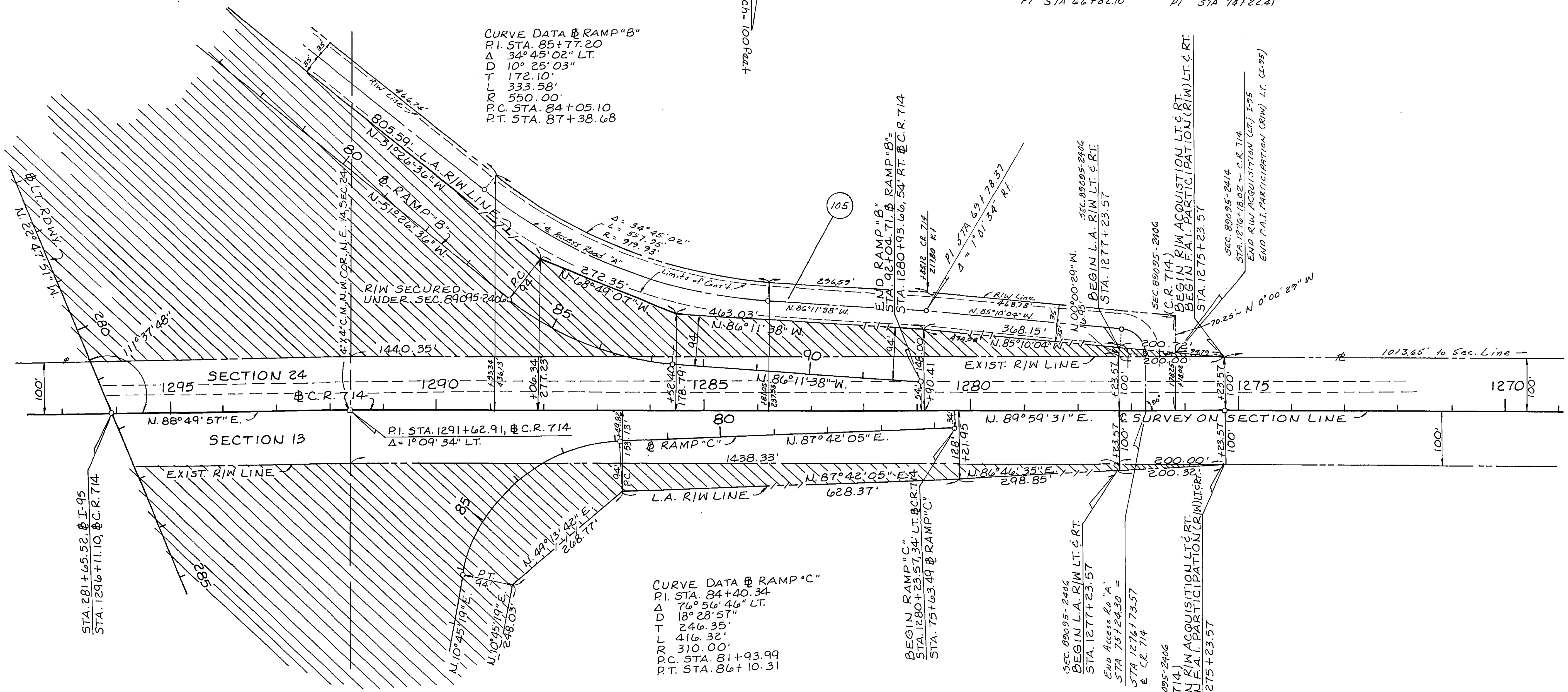
CURVE DATA @ RAMP "B"

PI STA. 85+77.20  
 Δ 34°45'02" LT.  
 D 10°25'03"  
 T 172.10'  
 L 333.58'  
 R 550.00'  
 P.C. STA. 84+05.10  
 P.T. STA. 87+38.68

SCALE: 1 inch = 100 feet

CURVE DATA @ RAMP "C"

PI STA. 84+40.34  
 Δ 76°56'46" LT.  
 D 18°28'57"  
 T 246.35'  
 L 416.32'  
 R 310.00'  
 P.C. STA. 81+93.99  
 P.T. STA. 86+10.31



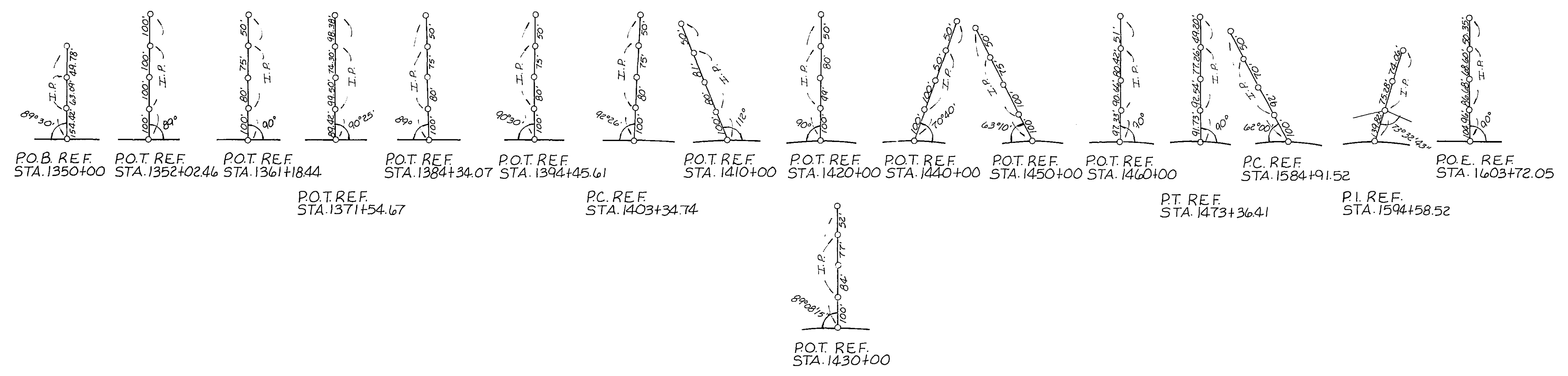
FLORIDA DEPARTMENT OF TRANSPORTATION			
RIGHT OF WAY ENGINEERING SECTION			
<b>RIGHT OF WAY MAP</b>			
STATE ROAD NO. (I-95) 9		MARTIN COUNTY	
BY	DATE	APPROVED BY	DATE
R.B.S.	7-2-81	E.C. Lord	
TRACED		DISTRICT ENGINEER	
CHECKED	J.C.B. 7-10-81	W.A.G.	6/30/83
MAPS PREPARED BY		FIELD BOOK NO'S.	
2nd DISTRICT OFFICE			
W.P.I. NO. 446415		SCALE 1 inch = 100 feet	
REVISION	BY	DATE	SECTION 89095-2414 SHEET 15

POLYTRACE 033

REF. POINTS RT. RDWY.



REF. POINTS LT. RDWY.



FLA. POWER & LIGHT & SOUTHERN BELL		
STATION	LT.	RT.
County Road 76-A		
271 + 96	48.8'	
274 + 20	47.5'	
276 + 38	48.6'	
276 + 42		126'
278 + 60	48.4'	
280 + 89	47.6'	
283 + 24	49'	
285 + 49	48.5'	
287 + 54	48.5'	
289 + 96	48.5'	
292 + 37	49'	
294 + 11	50'	
294 + 10		55.9'
296 + 55	49'	

FLA. POWER & LIGHT & SOUTHERN BELL		
STATION	LT.	RT.
GRADE RD. STA. 1586+28.40		
2 + 34	39.2'	
RT. I-95		
1 + 25		39'
4 + 85		39'

FLA. POWER & LIGHT & SOUTHERN BELL		
STATION	LT.	RT.
I-95		
1352 + 49	20.5'	

**FLORIDA DEPARTMENT OF TRANSPORTATION**  
RIGHT OF WAY ENGINEERING SECTION

## RIGHT OF WAY MAP

STATE ROAD NO. 9(I-95) MARTIN COUNTY

BY	DATE	APPROVED BY	DATE
RBS	9-26-80	<i>John C. Paul</i>	3-23-82

TRACED DIST. RTW ENGINEER

CHECKED *J.C.B.* 11-20-80 *W.A. Paul* 4-26-82  
ENGINEER OF RIGHT OF WAY

MAPS PREPARED BY *Z.M.* FIELD BOOK NO'S.

DISTRICT OFFICE 020135

W.P.I. NO. 44 6415 SCALE

SECTION 89095-2414 SHEET 16



TABLE OF OWNERSHIPS

PARCEL NO.	SHEET NO.	NAME	AREA		TAKEN	REMAINDERS		COMMENTS	PARCEL NO.	SHEET NO.	NAME	AREA		TAKEN	REMAINDERS		COMMENTS
			NON L/A	L/A	TOTAL	RIGHT	LEFT					NON L/A	L/A	TOTAL	RIGHT	LEFT	
100	13	Zarella Farms, Inc.	8421 Sq.Ft	0	8421 Sq.Ft.	9.35 Ac.	0										
101	4 & 13	Roy A. Schacht, et ux.	1.17 Ac.	10.10 Ac.	11.27 Ac.	7.21 Ac.	11.84 Ac.	uneconomic Remnant Part Rm. Rem. = 0.04 Ac.									
102	13	Charles Johnson, Jr., et ux.	11,251 Sq. Ft.	0	11,251 Sq. Ft.	13.73 Ac.	0										
103	124, 5, 6 & 13	Tadeusz Sendzimir	2.32 Ac.	137.90 Ac.	140.22 Ac.	216.44 Ac.	243.37 Ac.	SEE NOTE 1 BELOW									
104	2, 6 & 7	James W. Grossnickle	0	34.02 Ac.	34.02 Ac.	66.46 Ac.	379.52 Ac.	SEE NOTE 2 BELOW									
105	2, 3, 8, 12, 14, 15	Bessemer Securities Corporation	13.06 Ac.	99.23 Ac.	112.29 Ac.	176.6 Ac.	1510 Ac.										
106	2, 3 & 11	Zarella Farms, Inc.	5.27 Ac.	19.51 Ac.	24.78 Ac.	8.73 Ac.	874.16 Ac.										
20	4 & 13	T.I.I.T.F.						T.I.I.T.F. Reservation									
RA 1	3 & 10	Bessemer Securities Corporation				8301 Sq. Ft.		Restoration Agreement									
IOI PART	4	MARTIN COUNTY				9.587 AC.		SURPLUS PROPERTY									

NOTE NO. 1, PARCEL 103: 91.27 Acres Acquired For F.A. PROJ. I-95-2(52)104  
48.95 Acres Acquired For F.A. PROJ. IR-95-2(52)105

NOTE NO. 2, PARCEL 104: 27.65 Acres Acquired For F.A. PROJ. I-95-2(52)104  
6.37 Acres Acquired For F.A. PROJ. IR-95-2(52)105

FLORIDA DEPARTMENT OF TRANSPORTATION  
RIGHT OF WAY ENGINEERING SECTION

## RIGHT OF WAY MAP

STATE ROAD NO. 9 (I-95) MARTIN COUNTY

ADD PARCEL IOI PART	L. DANO	10-13-94
Rev. Par 101	T.C.B.	4-18-82
Rev. IOI Part RA 1	W.G.H.	6-14-84
Rev. Lt. Rem. Par. 103	BDS	2-6-84
ADD Parcel 20	BDS	1-19-84
Rev. Area 103 Lt. Rem.	BDS	12-12-83
Rev. Area 105	M.L.H.	7-13-83
Rev. Area 105 Chg. 344	M.L.H.	6-28-83
Rev. Lt. Rem. 103	M.L.H.	5-13-83
Rev. Rem. Area 102 & 105	D.S.A.	5-17-82
Rev. 102	D.S.A.	2-12-83
Rev. Par. 100	M.P.H.	8-4-82
Rev. 103, 104	J.C.B.	3-26-82
Rev. 101, 102	J.C.B.	3-22-82
Rev. 101, 103	J.C.B.	10-29-81

DRAWN BY: [Signature] DATE: 3-23-82  
 CHECKED BY: [Signature] DATE: 4-26-82  
 DISTRICT OFFICE  
 P.I. NO. 446415  
 SECTION 89095-2414 SHEET 17 OF