



HANSON GRANT
 CURVE DATA LT RDWY
 P.I. STA. 1204+47.21
 Δ 74°20'21.56" LT
 D 6°30'
 T 8689.28'
 L 1488.98'
 P.C. STA. 1171+57.92
 P.T. STA. 1204+47.21

CURVE DATA RT RDWY
 P.I. STA. 1203+33.47
 Δ 73°37'09.45" RT
 D 0°30'
 T 8575.55'
 L 14723.86'
 P.C. STA. 1117+57.92
 P.T. STA. 1203+33.47

NOTE:
 HATCHED AREA
 DENOTES SURPLUS
 PROPERTY

TOWNSHIP 39 SOUTH
 APPROX. TWP. LINE (PROJECTED)
 TOWNSHIP 38 SOUTH

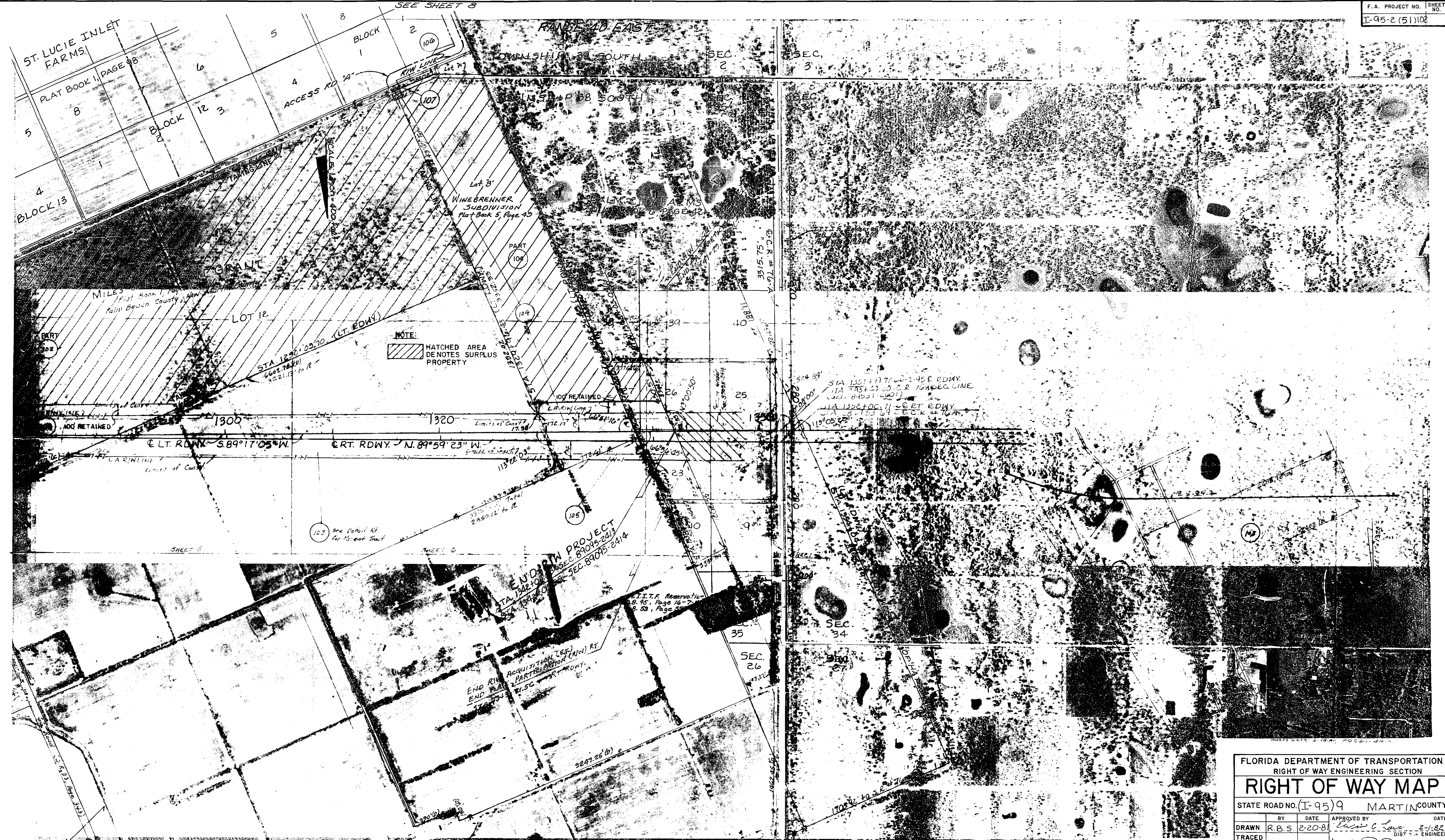
BEGIN R/W PROJECT
 STA. 1223+92.10 SEC. 89095-2413
 STA. 1223+92.10 SEC. 89095-2412
 STA. 4704+16.34 ON PARKWAY

BEGIN R/W ACQUISITION (PART)
 BEGIN R/W PARTICIPATION (R/W) RT.
 STA. 1228+70.68

NOTE:
 DIMENSIONS SHOWN ON THIS MAP
 ARE PROJECTED FROM SEC. 89095-2412.
 D-TROUBLE
 D-COMPLIMENT
 UNDER CONSTRUCTION. CABLE PARALLELS PARKWAY.
 POWER LINES OWNED BY FPL
 UNDER CONSTRUCTION BY FLORIDA GAS

MILES, OR HANSON GRANT
 PLAT BOOK PAGE 98
 Palm Beach County, Florida

FLORIDA DEPARTMENT OF TRANSPORTATION RIGHT OF WAY ENGINEERING SECTION			
RIGHT OF WAY MAP			
STATE ROAD NO. (I-95) 9 MARTIN COUNTY			
BY	DATE	APPROVED BY	DATE
R.B.S.	2-20-81	<i>[Signature]</i>	2-1-82
TRACED			DIST. ENGINEER
CHECKED		<i>[Signature]</i>	2-8-82
MAPS PREPARED BY		FIELD BOOK NO.	
2ND.			
DISTRICT OFFICE			
ADD PAR. 102 PART	L. DANO	10-13-94	
REV. PAR. 102	WILSON	07-14-87	
REVISION	BY	DATE	
			SECTION 89095-2413 SHEET 1 OF 9



NOTE:
 HATCHED AREA
 DE NOTES SURPLUS
 PROPERTY

END RTW PROJECT
 SEC. 89095-2413
 SEC. 89095-2414

FLORIDA DEPARTMENT OF TRANSPORTATION
 RIGHT OF WAY ENGINEERING SECTION

RIGHT OF WAY MAP

STATE ROAD NO. (I-95) 9 MARTIN COUNTY

BY	DATE	APPROVED BY	DATE
DRAWN R.B.S.	2-20-81	<i>W.A. Wilson</i>	2-1-82
TRACED		DIST. ENGINEER	
CHECKED	U.S.B. 3-2-81	<i>W.A. Wilson</i>	2-8-82
		ENGINEER OF RIGHT OF WAY	

ADD. PAR. 104 PART	L. DANO	6-13-84	MAPS PREPARED BY	END.	FIELD BOOK NO.
AND PAR. 102 PART	WILSON	07-14-87	DISTRICT OFFICE		1023778
REV. PARCEL 102			W.P.I. NO. 446414		SCALE 1 inch = 400 feet
DATE ACQUIS. 12-29-82			SECTION 89095-2413		SHEET 2 OF 9
DATE ACQUIS. 12-29-82					
REVISION	BY	DATE			

ST. LUCIE INLET FARMS SUBDIVISION

PLAT BOOK 1, PAGE 98

CURVE DATA LT. RDWY.
 P.I. STA. 1204+47.21
 Δ 74° 20' 41.56" LT.
 D 0° 30'
 T 8689.29'
 L 14868.98'
 R 11459.156'
 P.C. STA. 1117+57.92
 P.T. STA. 1266+26.90

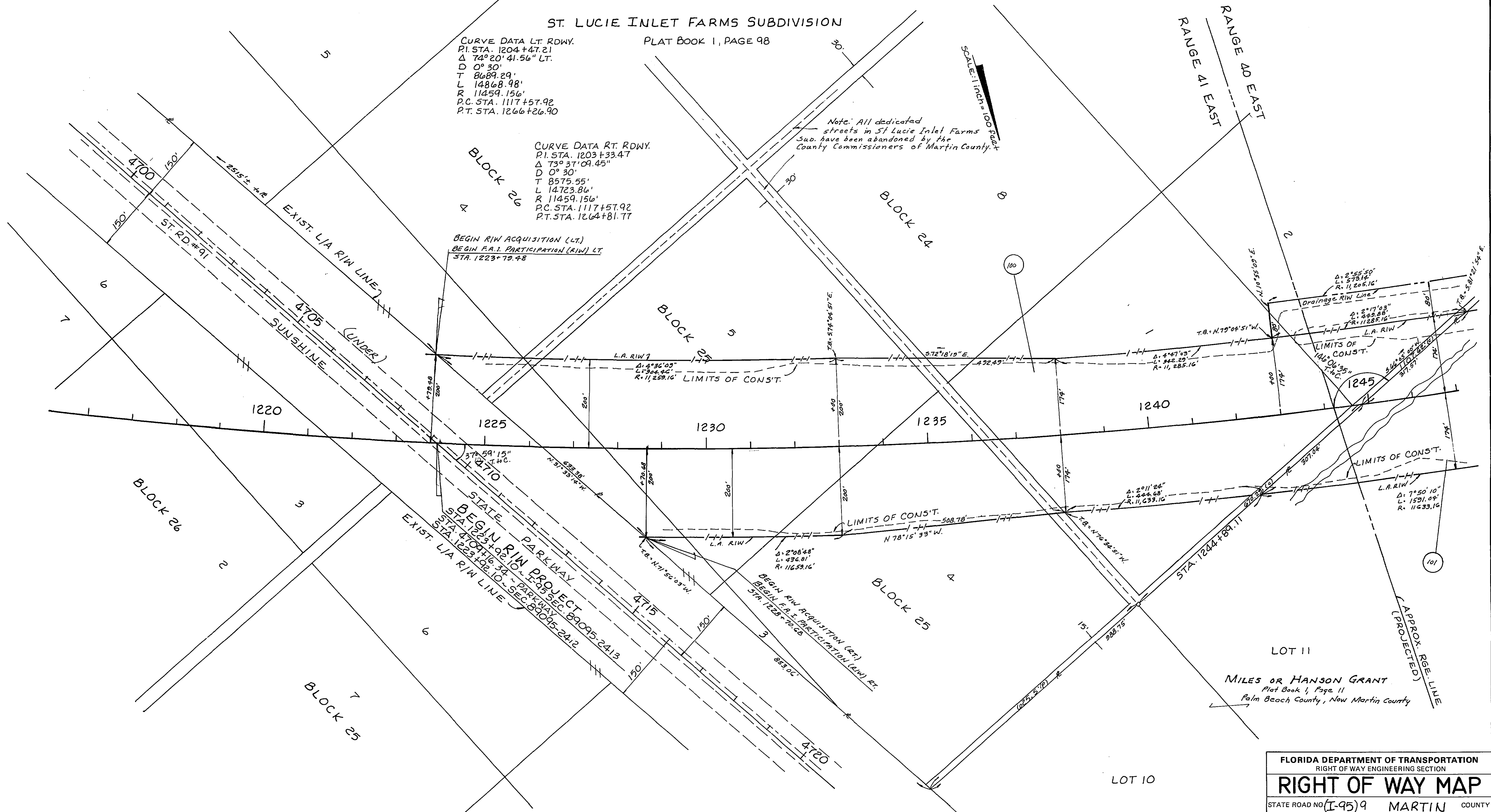
CURVE DATA RT. RDWY.
 P.I. STA. 1203+33.47
 Δ 73° 37' 09.45"
 D 0° 30'
 T 8575.55'
 L 14723.86'
 R 11459.156'
 P.C. STA. 1117+57.92
 P.T. STA. 1264+81.77

Note: All dedicated streets in St. Lucie Inlet Farms Sub. have been abandoned by the County Commissioners of Martin County.

SCALE: 1 inch = 100 feet

BEGIN R/W ACQUISITION (LT.)
 BEGIN P.A.I. PARTICIPATION (R/W) LT.
 STA. 1223+79.48

BEGIN R/W ACQUISITION (RT.)
 BEGIN P.A.I. PARTICIPATION (R/W) RT.
 STA. 1223+79.48



FLORIDA DEPARTMENT OF TRANSPORTATION			
RIGHT OF WAY ENGINEERING SECTION			
RIGHT OF WAY MAP			
STATE ROAD NO. I-959		MARTIN COUNTY	
BY	DATE	APPROVED BY	DATE
R.B.S.	1-27-81	<i>Edward C. Lord</i>	2-1-82
TRACED			DIST. R/W ENGINEER
CHECKED	J.C.B.	3-2-81	2-8-82
MAPS PREPARED BY 222		FIELD BOOK NO. 1023773	
DISTRICT OFFICE		SCALE 1 inch = 100 feet	
W.P.I. NO. 446414		SECTION 89095-2413	
REVISION	BY	DATE	SHEET 3 of 9

TOWNSHIP 38 SOUTH RANGE 40 EAST

NOTE: HATCHED AREA DENOTES SURPLUS PROPERTY

SCALE: 1 inch = 100 feet

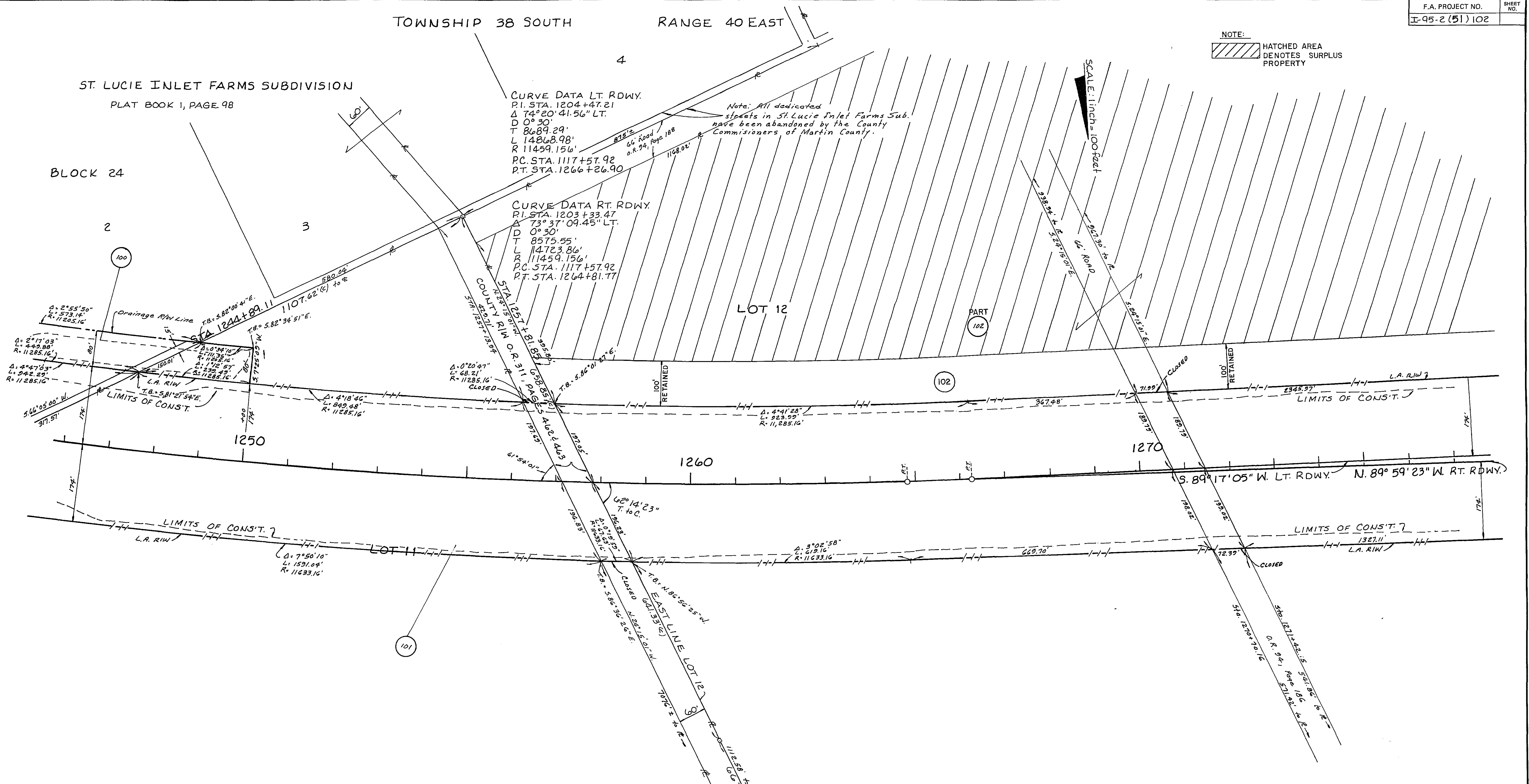
ST. LUCIE INLET FARMS SUBDIVISION
PLAT BOOK 1, PAGE 98

BLOCK 24

CURVE DATA LT. RDWY.
P.I. STA. 1204+47.21
Δ 74°20'41.56" LT.
D 0°30'
T 8689.29'
L 14868.98'
R 11459.156'
P.C. STA. 1117+57.92
P.T. STA. 1266+26.90

Note: All dedicated streets in St. Lucie Inlet Farms Sub. have been abandoned by the County Commissioners of Martin County.

CURVE DATA RT. RDWY.
P.I. STA. 1203+33.47
Δ 73°37'09.45" LT.
D 0°30'
T 8575.55'
L 14723.86'
R 11459.156'
P.C. STA. 1117+57.92
P.T. STA. 1264+81.77



MILES OR HANSON GRANT
Plat Book 1, Page 11
Palm Beach County, New Martin County

FLORIDA DEPARTMENT OF TRANSPORTATION RIGHT OF WAY ENGINEERING SECTION			
RIGHT OF WAY MAP			
STATE ROAD NO. (I-95) 9 MARTIN COUNTY			
BY	DATE	APPROVED BY	DATE
R.B.S.	1-28-81	<i>Eliso C. Law</i>	2-1-82
TRACED			DIST. R/W ENGINEER
CHECKED	J.C.B. 3-2-81	<i>W.A. G...</i>	2-8-82
MAPS PREPARED BY	J.N.D.	FIELD BOOK NO'S.	1023773
DISTRICT OFFICE		SCALE 1 inch = 100 feet	
ADD. PAR. 102 PART	L. DANO	10-13-84	W.P.I. NO. 446414
REV. PAR. 102	WILSON	07-14-87	SECTION 89095-2413
REVISION	BY	DATE	SHEET 4 of 9

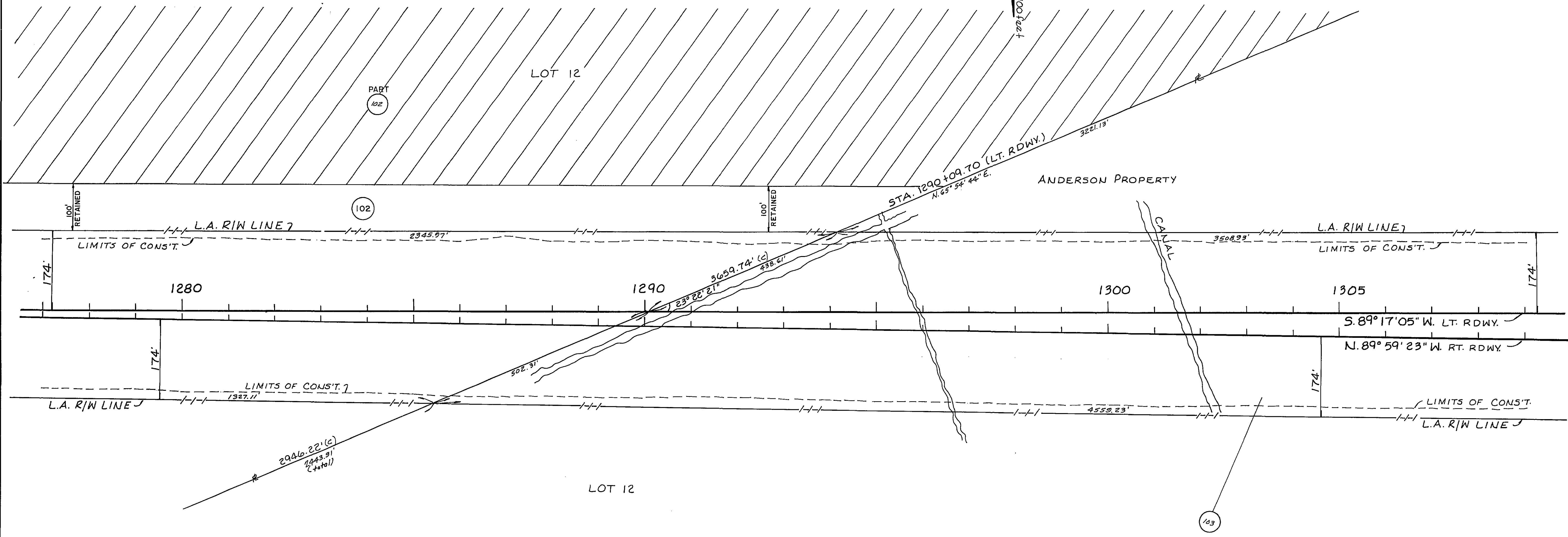
PL POLYTRACE 033

MILES OR HANSON GRANT

Plat Book 1, Page 11
Palm Beach County, New Martin County

NOTE:
HATCHED AREA
DENOTES SURPLUS
PROPERTY

SCALE: 1 inch = 100 feet

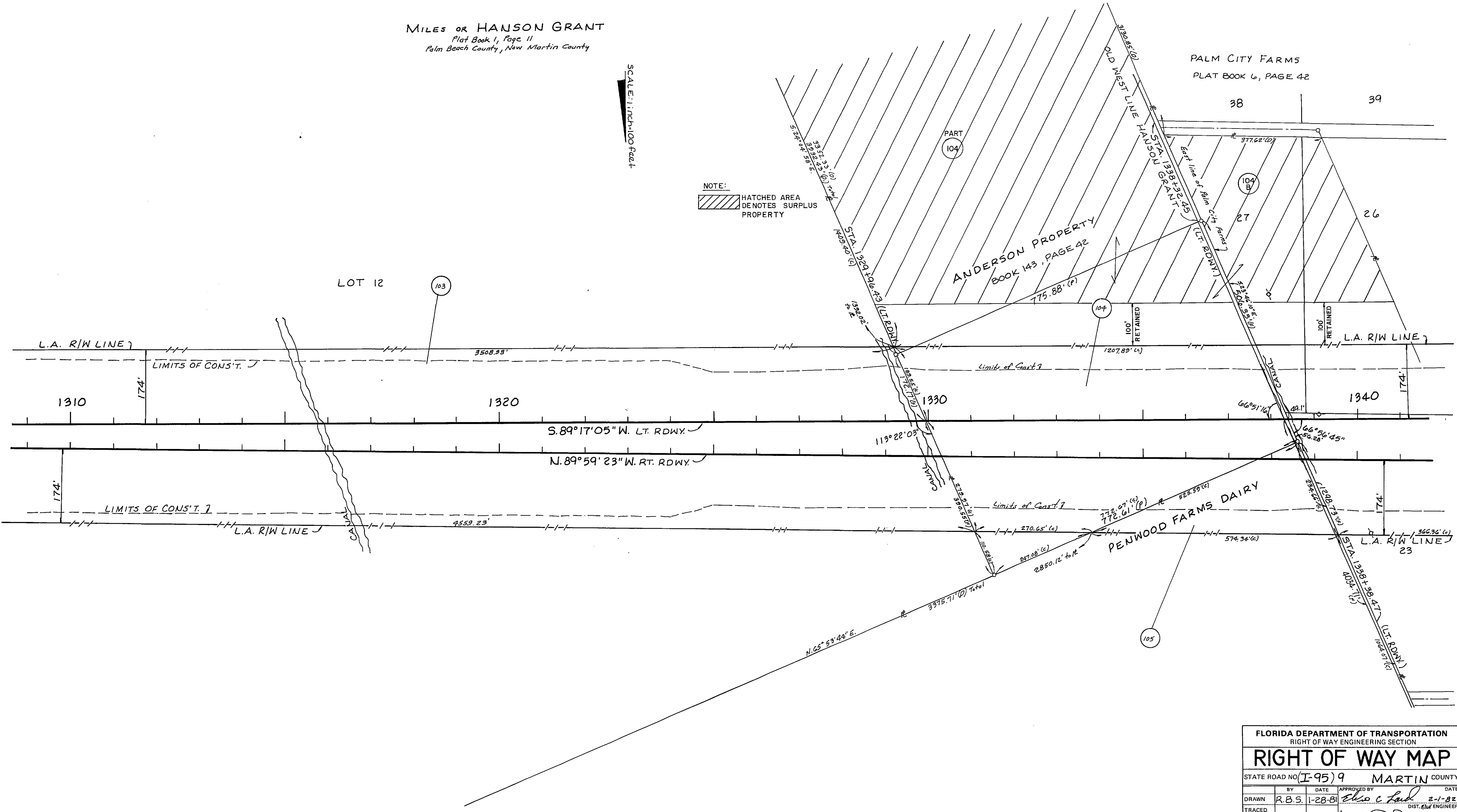


FLORIDA DEPARTMENT OF TRANSPORTATION RIGHT OF WAY ENGINEERING SECTION			
RIGHT OF WAY MAP			
STATE ROAD NO. (I-95) 9 MARTIN COUNTY			
BY	DATE	APPROVED BY	DATE
R.B.S.	1-28-81	<i>Chas C. Feil</i>	2-1-82
TRACED			
CHECKED	J.C.B. 3-2-81		2-8-82
MAPS PREPARED BY	2 J.D.		
DISTRICT OFFICE		FIELD BOOK NOS.	1023773
ADD. PAR. 102 PART	L. DANO	10-13-94	
REV. PAR. 102	WILSON	7-14-87	
REVISION	BY	DATE	
W.P.I. NO. 446414			SCALE 1 inch = 100 feet
SECTION 89095-2413			SHEET 5 of 9

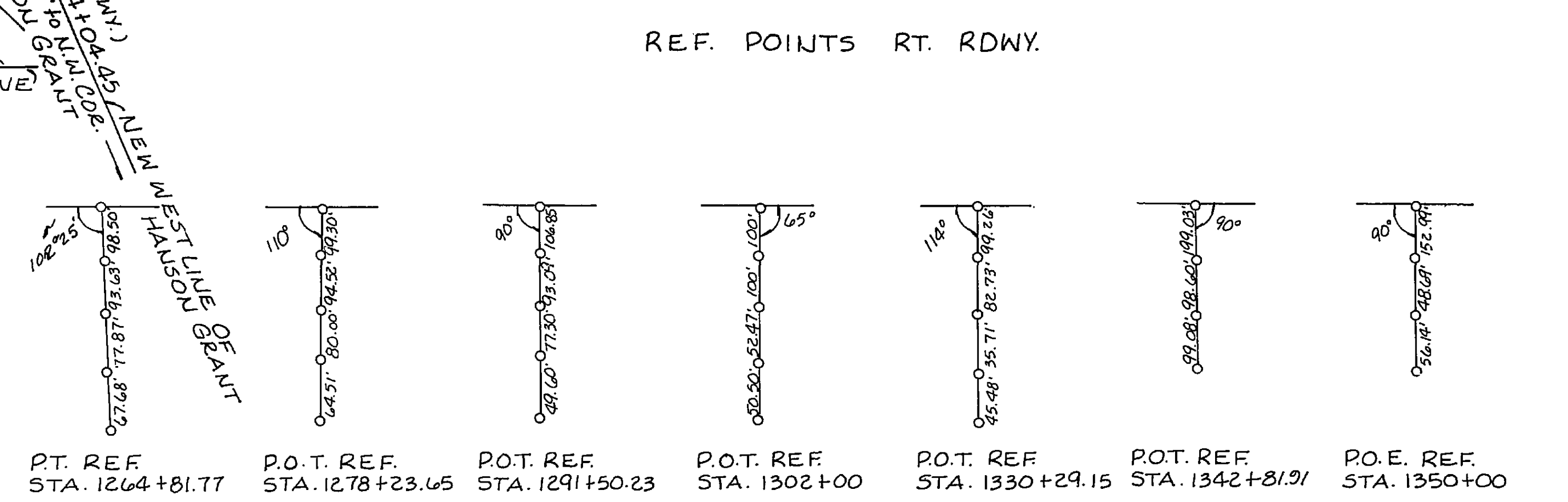
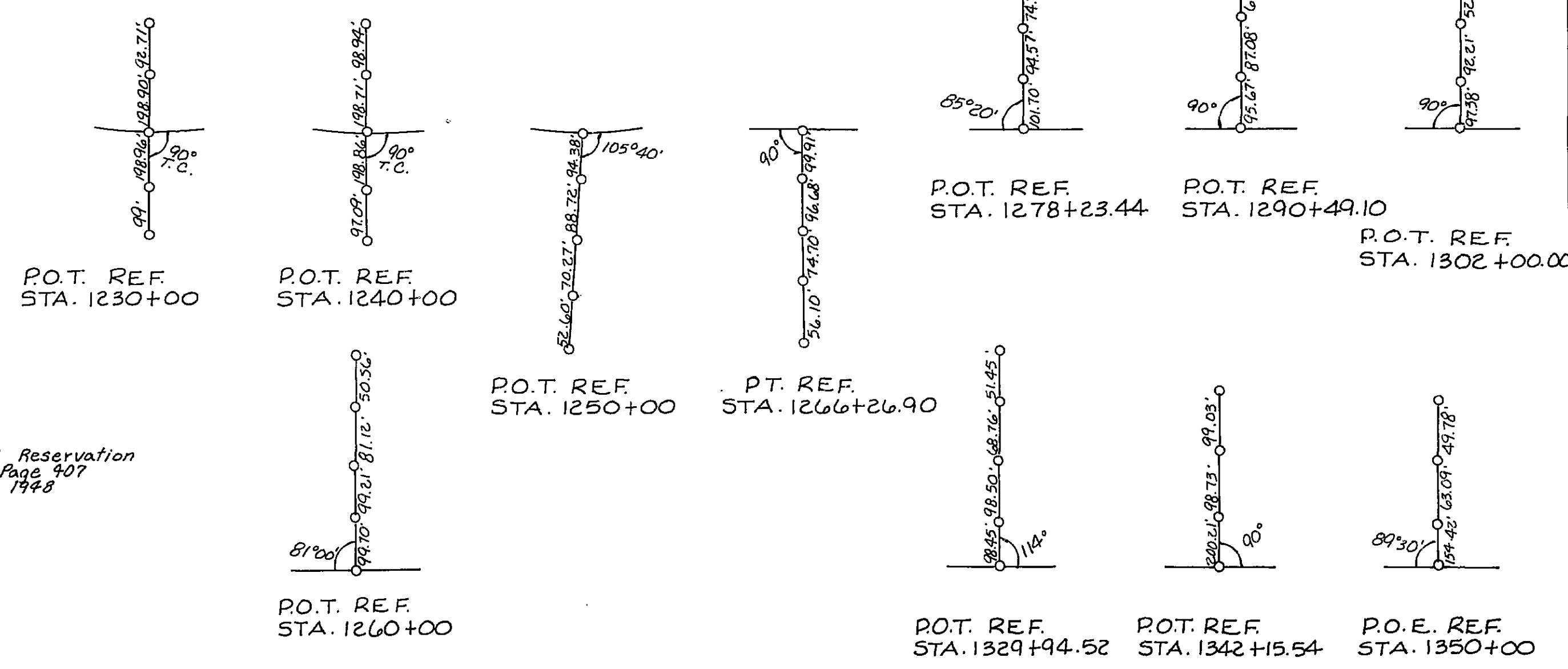
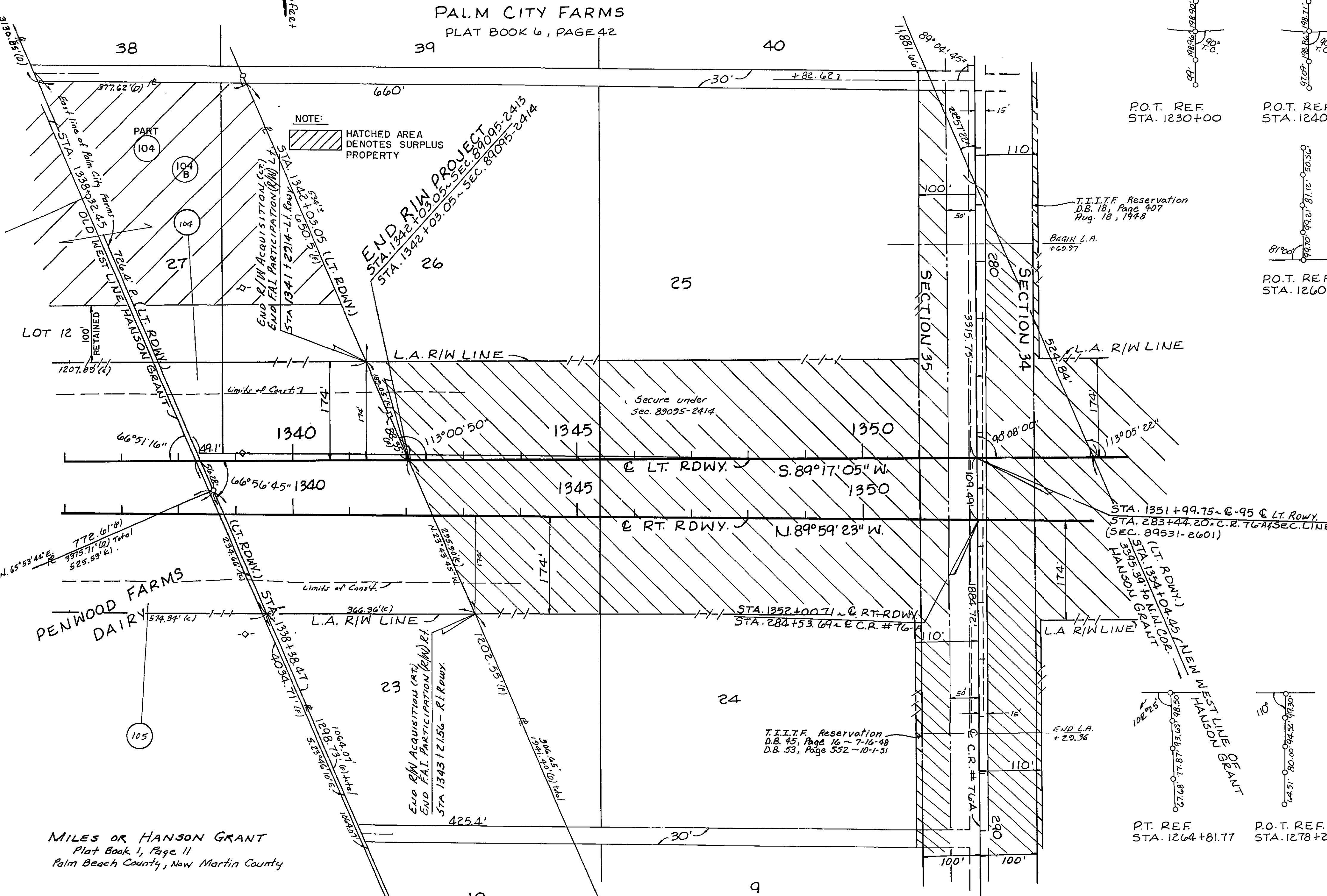
MILES OR HANSON GRANT
 Plat Book 1, Page 11
 Palm Beach County, New Martin County

SCALE: 1 inch = 100 feet

NOTE:
 HATCHED AREA
 DENOTES SURPLUS
 PROPERTY



FLORIDA DEPARTMENT OF TRANSPORTATION RIGHT OF WAY ENGINEERING SECTION			
RIGHT OF WAY MAP			
STATE ROAD NO. I-95 9		MARTIN COUNTY	
BY	DATE	APPROVED BY	DATE
DRAWN	R.B.S. 1-28-81	<i>Elmer C. Lusk</i>	2-1-82
TRACED			DIST. ENGINEER
CHECKED	J.C.B. 3-2-81	<i>W.A. [Signature]</i>	2-8-82
MAPS PREPARED BY		FIELD BOOK NO'S.	
DISTRICT OFFICE		1023773	
W.P.I. NO. 446414		SCALE 1 inch = 100 feet	
ADD. PAR. 104 PART	L. DANO	10-13-94	
REVISION	BY	DATE	
SECTION 89095-2413			SHEET 6 of 9



FLORIDA DEPARTMENT OF TRANSPORTATION
 RIGHT OF WAY ENGINEERING SECTION

RIGHT OF WAY MAP

STATE ROAD NO. (I-95) 9 MARTIN COUNTY

BY	DATE	APPROVED BY	DATE
R.B.S.	1-30-81	<i>Thomas C. Ford</i>	2-1-82

TRACED

CHECKED *J.C.B.* 3-2-81

MAPS PREPARED BY *J.C.B.* 2ND

DISTRICT OFFICE

FIELD BOOK NO. 1023773

ADD PARCEL 104 PART L. DANO 10-13-94

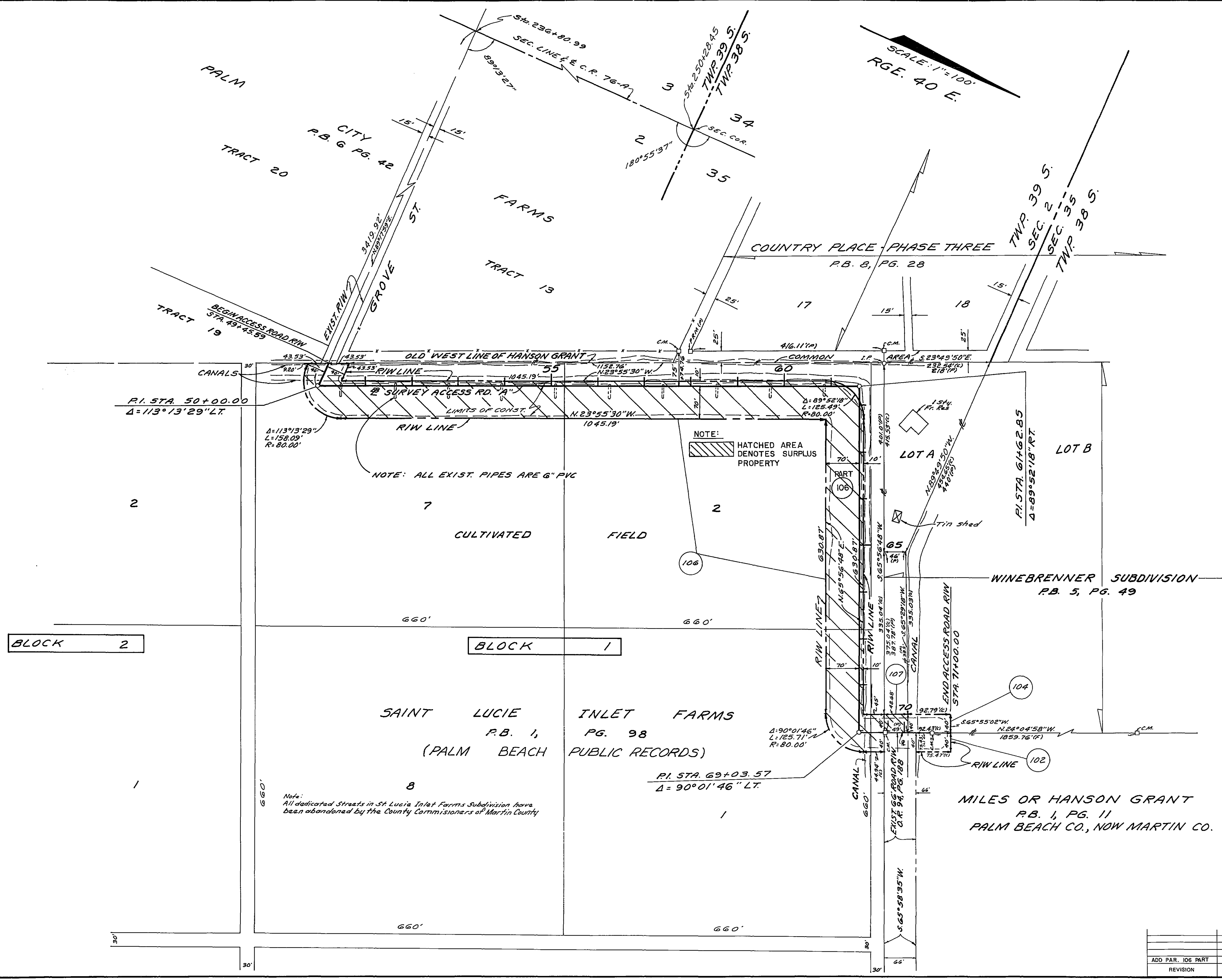
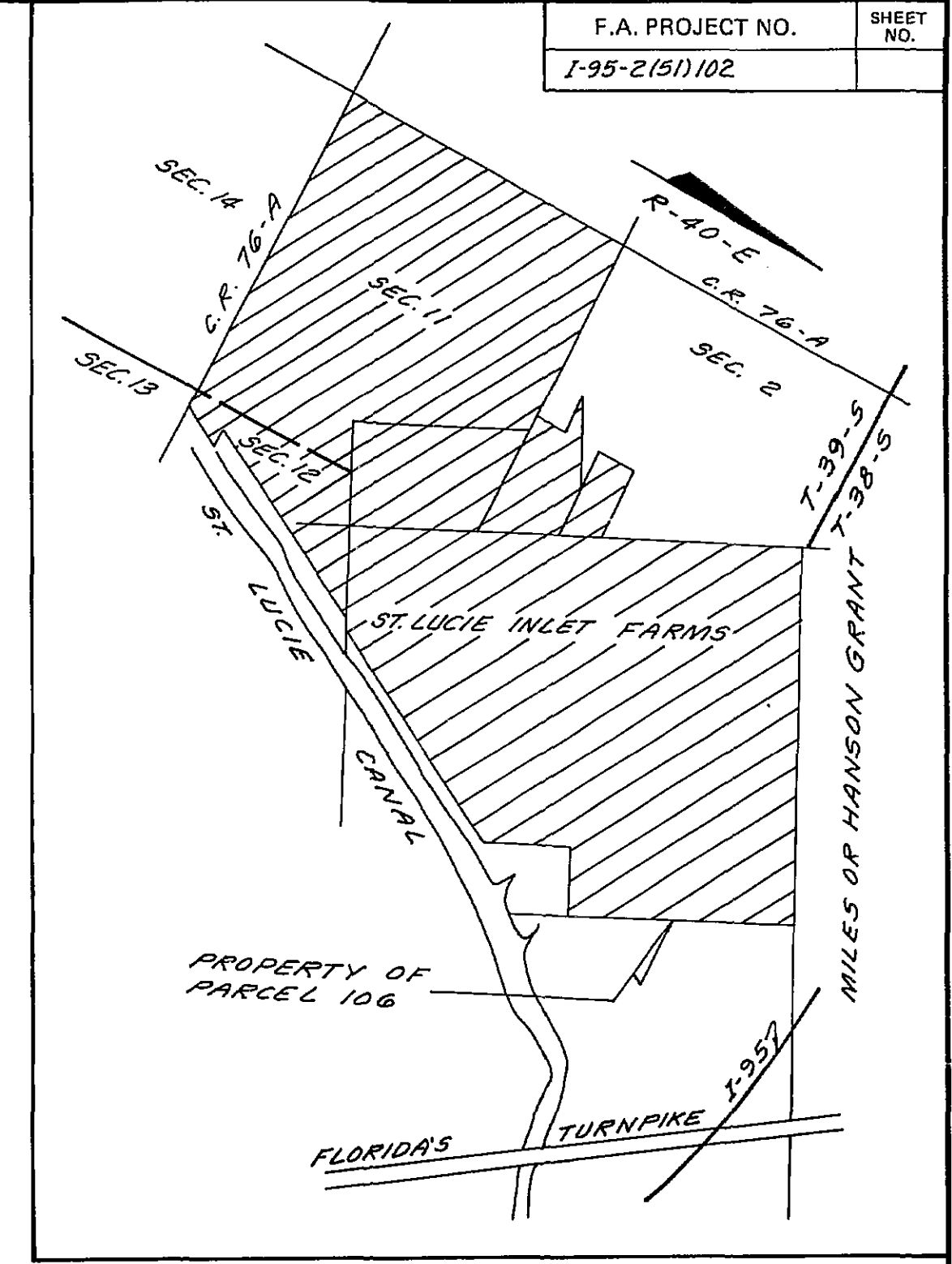
REVISION BY DATE

W.P.I. NO. 446414

SCALE 1 inch = 100 feet

SECTION 89095-2413 SHEET 7 of 9

SCALE: 1"=100'
RGE. 40 E.



NOTE:
HATCHED AREA DENOTES SURPLUS PROPERTY

NOTE: ALL EXIST. PIPES ARE 6" PVC

Note:
All dedicated Streets in St. Lucie Inlet Farms Subdivision have been abandoned by the County Commissioners of Martin County

FLORIDA DEPARTMENT OF TRANSPORTATION RIGHT OF WAY ENGINEERING SECTION			
RIGHT OF WAY MAP			
STATE ROAD NO. 9 (I-95)		MARTIN COUNTY	
BY	DATE	APPROVED BY	DATE
DRAWN Ronaw	4-82	Harsh J. Korr	
TRACED Sikas	4-82	DISTRICT ENGINEER	
CHECKED Harkins	4-82	W.A. GARDNER	4-30-82
MAPS PREPARED BY TALLAHASSEE OFFICE		FIELD BOOK NO. 025082	
W.P.I. NO. 446414		SCALE 1"=100'	
ADD PAR. 106 PART	L. DANO	10-13-94	
REVISION	BY	DATE	SECTION 89095-2413 SHEET 8 OF 9

TABLE OF OWNERSHIPS

PARCEL NO.	SHEET NO.	NAME	AREA TAKEN			REMAINDERS		COMMENTS	PARCEL NO.	SHEET NO.	NAME	AREA TAKEN			REMAINDERS		COMMENTS
			NON L/A	L/A	TOTAL	RIGHT	LEFT					NON L/A	L/A	TOTAL	RIGHT	LEFT	
100.1	1, 3 & 4	ST. LUCIE WATERWAY CORP.	0.94 Ac.	15.95 Ac.	16.89 Ac.	9.18 Ac.	264 Ac. ²										
101.1	1, 3 & 4	TROPICAL SUNSHINE CORP.	14,049 Sq.Ft.	9.77 Ac.	10.10 Ac.	341.5 Ac. ²	3.38 Ac.										
102.1	1, 2, 4, 5 & 8	MARY RITA AMOROSI, ETAL	3018 Sq.Ft.	25.80 Ac.	254.86 Ac.	2994 Ac.	0										
103.1	2, 5 & 6	DONALD R. ANDERSON	0	37.47 Ac.	37.47 Ac.	667.54 Ac.	51.47 Ac.										
104.1	2, 6, 7, 8	DONALD R. ANDERSON, ETUX	3703 Sq.Ft.	10.73 Ac.	10.82 Ac.	7.88 Ac.	66.00 Ac.										
105.1	2, 6 & 7	PENNWOOD FARMS, INC.	0	1.42 Ac.	1.42 Ac.	211.74 Ac.	0										
106.1	8	Frederick T. Peters, et al, as trustees	3.59 Ac.	0	3.59 Ac.	1.751 Ac ²	1.83 Ac.										
107.1	8	Lloyd O. Minear	1,954 Sq.Ft.	0	1,954 Sq.Ft.	0	1.69 Ac.										
104.1 B	7	VIRGINIA O. ANDERSON						O.R. 734, PG. 2077									
102 PART	1, 2, 4 & 5	MARTIN COUNTY			225,653 AC.			SURPLUS PROPERTY									
104 PART	2, 6 & 7	MARTIN COUNTY			62,891 AC			SURPLUS PROPERTY									
106 PART	8	MARTIN COUNTY			3.59 AC			SURPLUS PROPERTY									
107 PART	8	MARTIN COUNTY			1,954 SF			SURPLUS PROPERTY									

FLORIDA DEPARTMENT OF TRANSPORTATION
RIGHT OF WAY ENGINEERING SECTION

RIGHT OF WAY MAP

STATE ROAD NO. (I-95) 9 MARTIN COUNTY

DATE: 2-1-82
APPROVED BY: *W.A. [Signature]*
DISTRICT R/W ENGINEER

DRAWN BY: *W.A. [Signature]*
DATE: 2-3-82
TRACED BY: *W.A. [Signature]*
DATE: 2-3-82
CHECKED BY: *W.A. [Signature]*
DATE: 2-3-82

ADD. PAR. 102 PART, 104 L.DANO 10-13-94
PART, 106 PART & 107 PART)
REV. AREA CHG. PAR. 102 WILSON 07-14-87
Rev. Lt. Rem. Par. 104 ddg 11-18-86
ADD. PAR. 102 PAR. 102 W.A.R. 6-12-83
Various dds 6-29-82

MAPS PREPARED BY: 2ND. DISTRICT OFFICE
FIELD BOOK NO. 5
SCALE: _____
SECTION 89095-2413 SHEET 9 OF 9