

CLEARINGS SHOWN ON THIS MAP ARE PROJECTED FROM SEC. 89095-2410  
 IRON PIPE  
 CONCRETE MONI  
 UNDERGROUND GAS LINED BY FLORIDA GAS  
 UNDERGROUND TELEPHONE OWNED BY SOUTHERN BELL  
 T.E.T. UNDERGROUND LINE PARALLEL PARKWAY  
 L.O.C. LIMITS OF CONSTRUCTION  
 DENOTES ACCESS ROAD NO. 2 TRANSFER TO MARTIN COUNTY

NOTE:  
 The survey was performed prior to September 1981

BEGIN R/W PROJECT  
 STA. 1110+73.33 SEC. 89095-2412  
 STA. 1110+73.33 SEC. 89095-2412

FLORIDA DEPARTMENT OF TRANSPORTATION			
RIGHT OF WAY ENGINEERING SECTION			
<b>RIGHT OF WAY MAP</b>			
STATE ROAD NO. (I-95) 9 MARTIN COUNTY			
BY	DATE	APPROVED BY	DATE
DRAWN R.B.S.	1-26-81		
TRACED			
CHECKED J.C.B.	3-5-81		
MAPS PREPARED BY 2ND DISTRICT OFFICE		FIELD BOOK NO. 102372	
W.P.I. NO. 446413		SCALE 1 inch = 400 feet	
REVISION	BY	DATE	SECTION 89095-2412 SHEET 1 OF 10





FLORIDA DEPARTMENT OF TRANSPORTATION  
 RIGHT OF WAY ENGINEERING SECTION

**RIGHT OF WAY MAP**

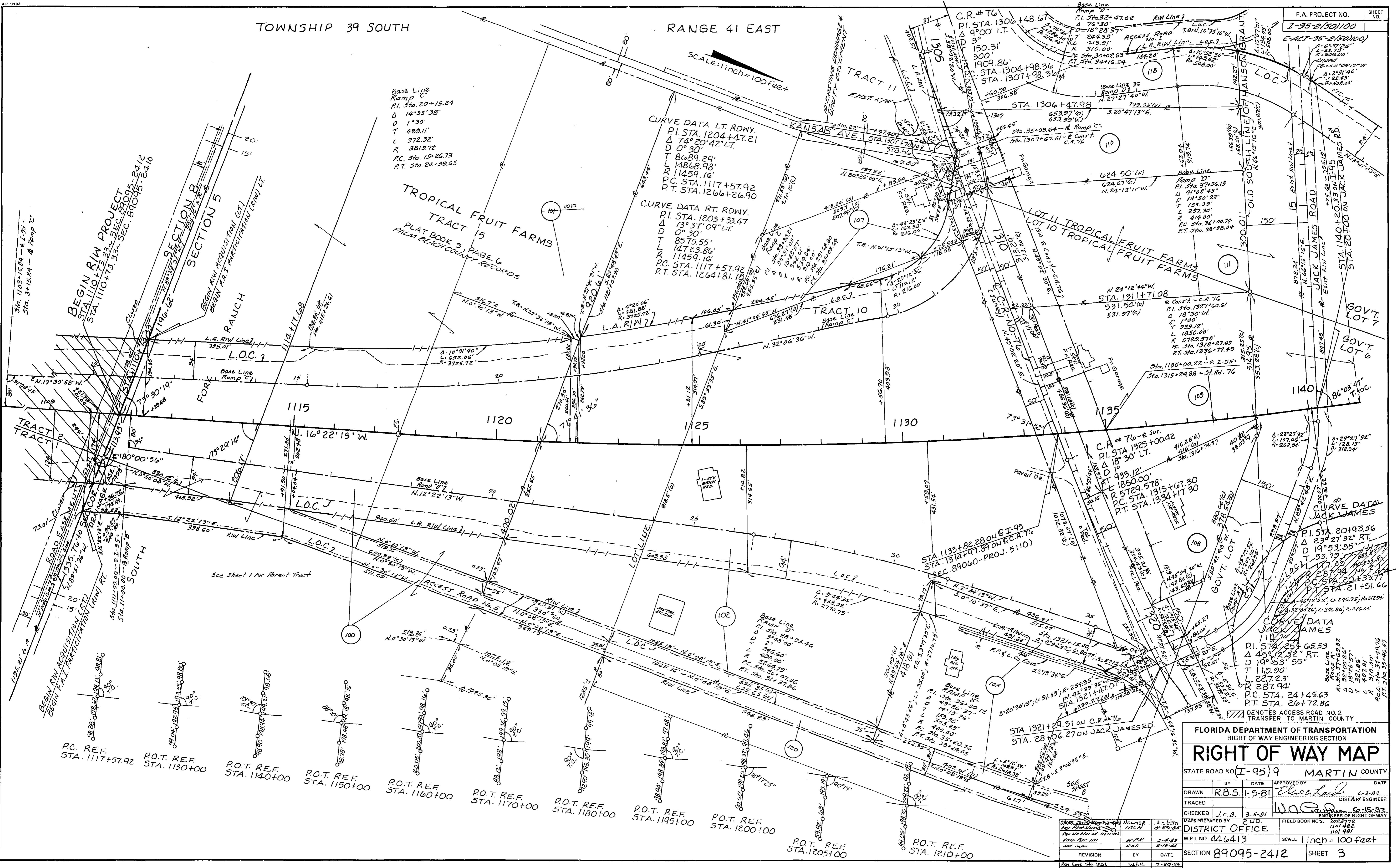
STATE ROAD NO. (I-95) 9 MARTIN COUNTY

BY	DATE	APPROVED BY	DATE
DRAWN R.B.S.	1-27-81		
TRACED			
CHECKED		<i>WAGNER</i>	
MAPS PREPARED BY		FIELD BOOK NOS.	
DISTRICT OFFICE		1103772	
W.P.I. NO. 446413		SCALE 1 inch = 400 feet	
SECTION 89095-2412		SHEET 2 OF 10	

REVISION	BY	DATE
1		2-14-77
2		2-11-70
3		6-2-80
4		4-2-83
5		12-21-83
6		8-23-83
7		4-28-83
8		6-2-87
9		11-20-88
10		2-27-89



SCALE: 1 inch = 100 feet



Base Line  
Ramp C  
P.I. STA. 20+15.84  
Δ 14°35'38"  
D 1°30'  
T 489.11'  
L 972.92'  
R 3819.72'  
P.C. STA. 15+26.73  
P.T. STA. 24+99.65

CURVE DATA LT. RDWY.  
P.I. STA. 1204+47.21  
Δ 74°20'42" LT.  
D 0°30'  
T 8689.29'  
L 14868.98'  
R 11459.16'  
P.C. STA. 1117+57.92  
P.T. STA. 1266+26.90

CURVE DATA RT. RDWY.  
P.I. STA. 1203+33.47  
Δ 73°37'09" LT.  
D 0°30'  
T 8575.55'  
L 14723.86'  
R 11459.16'  
P.C. STA. 1117+57.92  
P.T. STA. 1264+81.78

FLORIDA DEPARTMENT OF TRANSPORTATION  
RIGHT OF WAY ENGINEERING SECTION

**RIGHT OF WAY MAP**

STATE ROAD NO. I-95/9 MARTIN COUNTY

BY	DATE	APPROVED BY	DATE
R.B.S.	1-5-81	<i>[Signature]</i>	6-3-82
TRACED			DIST. A.W. ENGINEER

CHECKED	J.C.B.	3-5-81	<i>[Signature]</i>	6-15-82
MAPS PREPARED BY	2 M.D.			ENGINEER OF RIGHT OF WAY
DISTRICT OFFICE				1101482

SECTION	89095-2412	SHEET	3
---------	------------	-------	---

SCALE 1 inch = 100 feet

NOTES: ACCESS ROAD NO. 2 TRANSFER TO MARTIN COUNTY

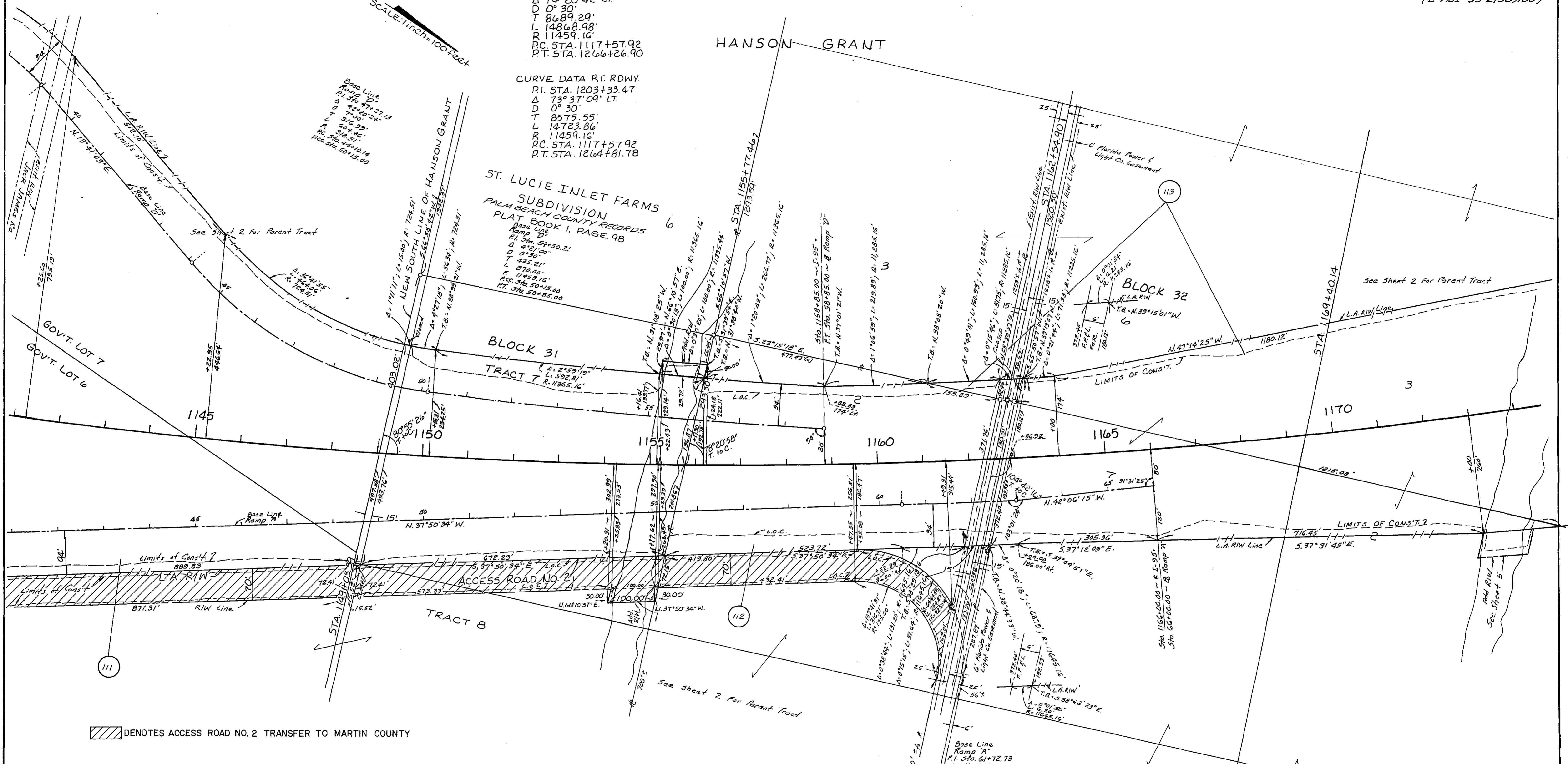
REVISION	BY	DATE
1	W.P.H.	3-8-83
2	D.S.A.	8-19-82
3	T.L.S.	4-5-85

TOWNSHIP 39 SOUTH RANGE 41 EAST

CURVE DATA LT. RDWY.  
 P.I. STA. 1204+47.21  
 $\Delta$  74°20'42" LT.  
 D 0°30'  
 T 8689.29'  
 L 14868.98'  
 R 11459.16'  
 P.C. STA. 1117+57.92  
 P.T. STA. 1266+26.90

CURVE DATA RT. RDWY.  
 P.I. STA. 1203+33.47  
 $\Delta$  73°37'09" LT.  
 D 0°30'  
 T 8575.55'  
 L 14723.86'  
 R 11459.16'  
 P.C. STA. 1117+57.92  
 P.T. STA. 1264+81.78

SCALE: 1 INCH = 100 FEET



/// DENOTES ACCESS ROAD NO. 2 TRANSFER TO MARTIN COUNTY

FLORIDA DEPARTMENT OF TRANSPORTATION RIGHT OF WAY ENGINEERING SECTION			
<b>RIGHT OF WAY MAP</b>			
STATE ROAD NO. (I-95) 9		MARTIN COUNTY	
BY	DATE	APPROVED BY	DATE
R.B.S.	1-5-81	<i>Edward C. Had</i>	6-3-82
TRACED			DIST. A.W. ENGINEER
CHECKED	J.C.B.	3-5-81	<i>W.A.D.</i>
MAPS PREPARED BY	2 J.D.		ENGINEER OF RIGHT OF WAY
DISTRICT OFFICE	FIELD BOOK NOS. 1023 TTZ 1101982		
W.P.I. NO. 446413	SCALE 1 inch = 100 feet		
REVISION	BY	DATE	SECTION 89095-2412 SHEET 4

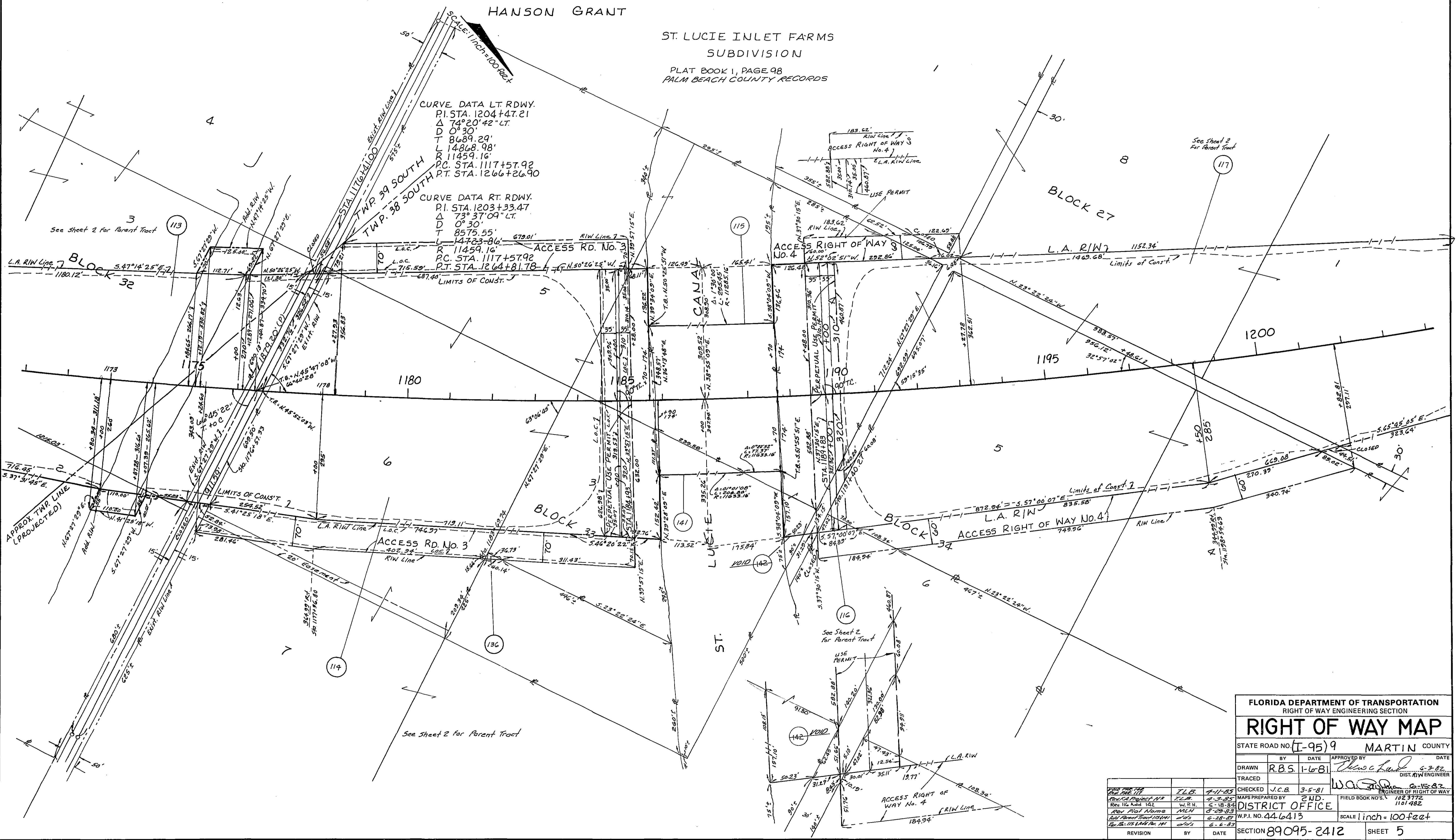
Class Martin Access Rd 2	WELM	3-1-80
Rev. P.A. Plan No	WPH	4-2-85
Rev. Plat Name	MCH	8-29-83



TOWNSHIP 39 SOUTH RANGE 41 EAST

HANSON GRANT

ST. LUCIE INLET FARMS  
SUBDIVISION  
PLAT BOOK 1, PAGE 98  
PALM BEACH COUNTY RECORDS



CURVE DATA LT. RDWY.  
P.I. STA. 1204+47.21  
 $\Delta$  74°20'42" LT.  
D 0°30'  
T 8689.29'  
L 14868.98'  
R 11459.16'  
P.C. STA. 1117+57.92  
P.T. STA. 1266+26.90

CURVE DATA RT. RDWY.  
P.I. STA. 1203+33.47  
 $\Delta$  73°37'09" LT.  
D 0°30'  
T 8575.55'  
L 14723.86'  
R 11459.16'  
P.C. STA. 1117+57.92  
P.T. STA. 1264+81.78

FLORIDA DEPARTMENT OF TRANSPORTATION			
RIGHT OF WAY ENGINEERING SECTION			
<b>RIGHT OF WAY MAP</b>			
STATE ROAD NO. (I-95) 9		MARTIN COUNTY	
DRAWN	BY	DATE	APPROVED BY
R.B.S.	R.B.S.	1-6-81	<i>W.C. [Signature]</i>
TRACED			DIST. R/W ENGINEER
			<i>W.C. [Signature]</i>
			ENGINEER OF RIGHT OF WAY
CHECKED	J.C.B.	3-5-81	
MAPS PREPARED BY	2.N.D.		
DISTRICT OFFICE		FIELD BOOK NO. 1123772	
W.P.I. NO. 446413		1161482	
SCALE 1 inch = 100 feet			
SECTION 89095-2412			SHEET 5

VOID THIS FILE	T.L.B.	7-11-85
Rev. No. 117	R.L.B.	7-1-85
Rev. No. 102	W.R.H.	6-18-84
Rev. Plat Name	MLN	8-28-83
Rev. Plat No. 104	W.C.	6-28-83
Rev. Plat No. 104	W.C.	6-6-83
REVISION	BY	DATE

TOWNSHIP 38 SOUTH RANGE 41 EAST

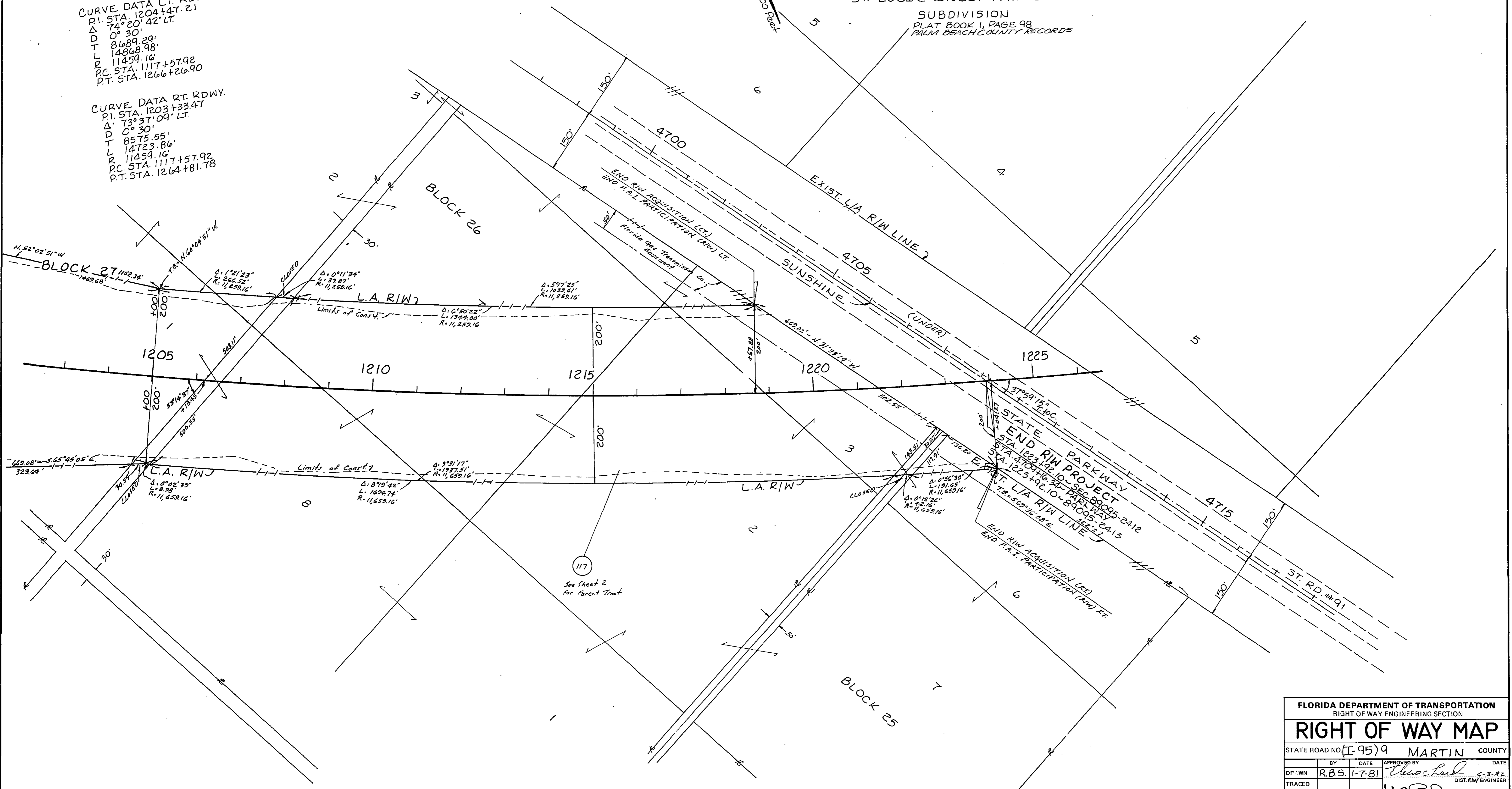
HANSON GRANT

ST. LUCIE INLET FARMS SUBDIVISION  
 PLAT BOOK 1, PAGE 98  
 PALM BEACH COUNTY RECORDS

SCALE: 1"=100' Feet

CURVE DATA LT. RDWY.  
 P.I. STA. 1204+47.21  
 Δ: 74°20'42" LT.  
 D: 0°30'  
 T: 8689.29'  
 L: 14868.98'  
 R: 11459.16'  
 P.C. STA. 1117+57.92  
 P.T. STA. 1266+26.90

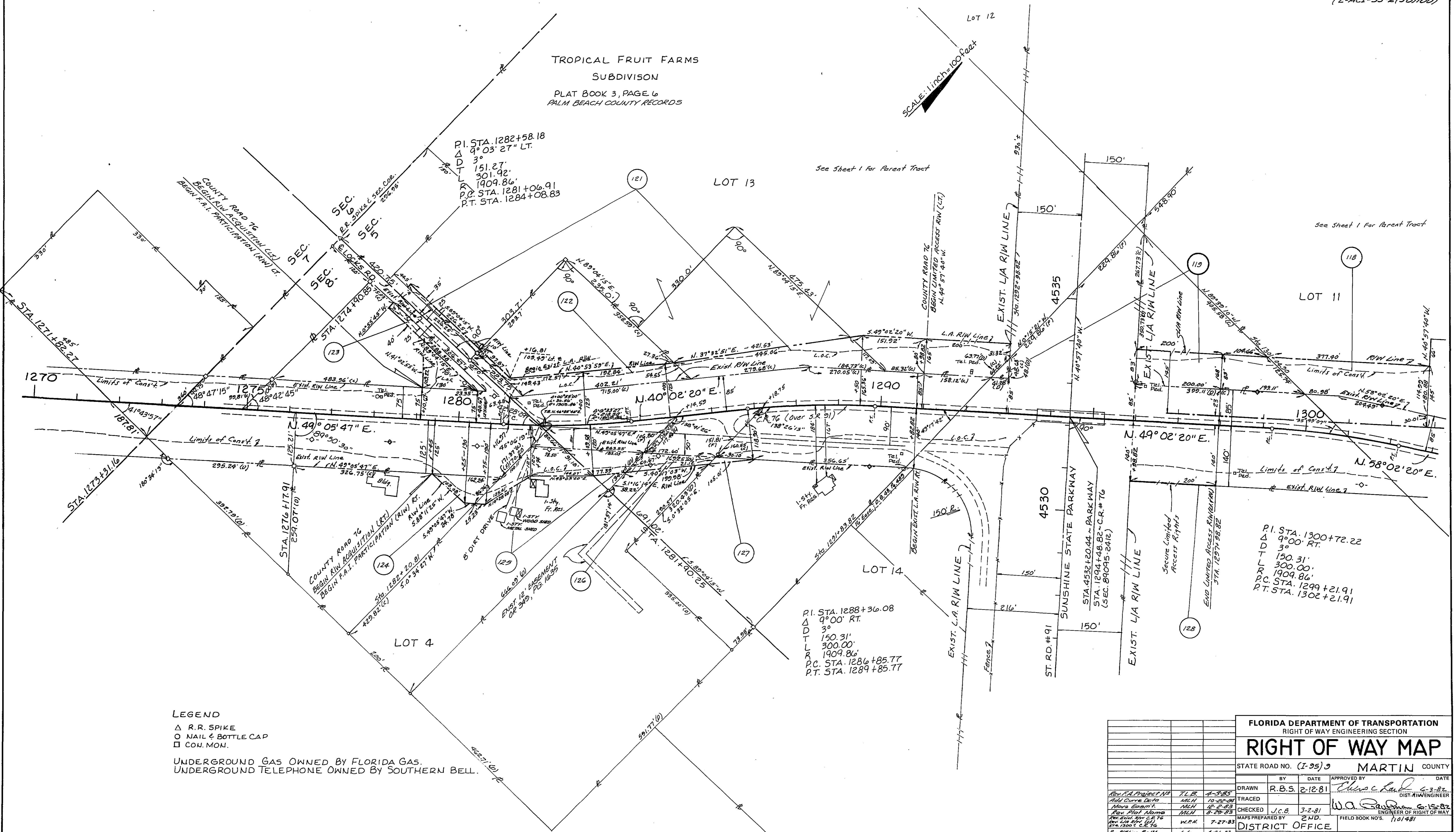
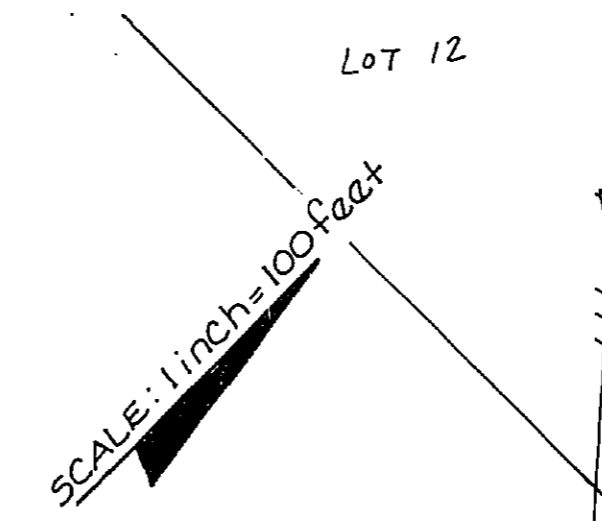
CURVE DATA RT. RDWY.  
 P.I. STA. 1203+33.47  
 Δ: 73°37'09" LT.  
 D: 0°30'  
 T: 8575.55'  
 L: 14723.86'  
 R: 11459.16'  
 P.C. STA. 1117+57.92  
 P.T. STA. 1264+81.78



FLORIDA DEPARTMENT OF TRANSPORTATION RIGHT OF WAY ENGINEERING SECTION			
<b>RIGHT OF WAY MAP</b>			
STATE ROAD NO. (I-95) 9 MARTIN COUNTY			
BY	DATE	APPROVED BY	DATE
DF: WN	R.B.S. 1-7-81	<i>Chas. Lamb</i>	6-3-82
TRACED			DIST. R/W ENGINEER
CHECKED	J.C.B. 3-5-81	<i>W.C.B.</i>	6-3-82
MAPS PREPARED BY	E.N.D.	FIELD BOOK NO'S.	1023772 1101482
DISTRICT OFFICE		SCALE 1"=100' Feet	
W.P.I. NO.	446413	SECTION 89095-2412 SHEET 6	
REVISION	BY	DATE	
Rev. F.A. Project #	T.L.E.	4-3-83	
Rev. Plat Name	M.L.H.	8-25-83	

TOWNSHIP 39 SOUTH RANGE 41 EAST

TROPICAL FRUIT FARMS  
SUBDIVISION  
PLAT BOOK 3, PAGE 6  
PALM BEACH COUNTY RECORDS



LEGEND

- △ R.R. SPIKE
- NAIL & BOTTLE CAP
- CON. MON.

UNDERGROUND GAS OWNED BY FLORIDA GAS.  
UNDERGROUND TELEPHONE OWNED BY SOUTHERN BELL.

FLORIDA DEPARTMENT OF TRANSPORTATION  
RIGHT OF WAY ENGINEERING SECTION

RIGHT OF WAY MAP

STATE ROAD NO. (I-95) 9 MARTIN COUNTY

Rev. F.A. Project No.	F.L.B.	4-3-85	APPROVED BY	DATE
Add Curve Data	MLH	10-20-89	BY	DATE
Move Easement	MLH	12-2-83	R.B.S.	2-12-81
Rev. Plat Name	MLH	8-29-83	TRACED	
Rev. Plat No. 76	W.R.H.	7-27-83	CHECKED	J.C.B. 3-2-81
Rev. Plat No. 123	W.R.H.	8-21-83	MAPS PREPARED BY	T.N.D.
Rev. Plat No. 124	W.R.H.	12-23-82	DISTRICT OFFICE	FIELD BOOK NO'S. 1101481
Rev. Plat No. 125	D.S.A.	10-18-82	W.P.I. NO.	44-6413
Rev. Plat No. 126			SCALE	1 inch = 100 feet
Rev. Plat No. 127			SECTION	89095-2412
Rev. Plat No. 128			SHEET	7

P.I. STA. 1300+72.22  
Δ 9°00' RT.  
D 3°  
T 150.31'  
L 300.00'  
R 1909.86'  
P.C. STA. 1299+21.91  
P.T. STA. 1302+21.91

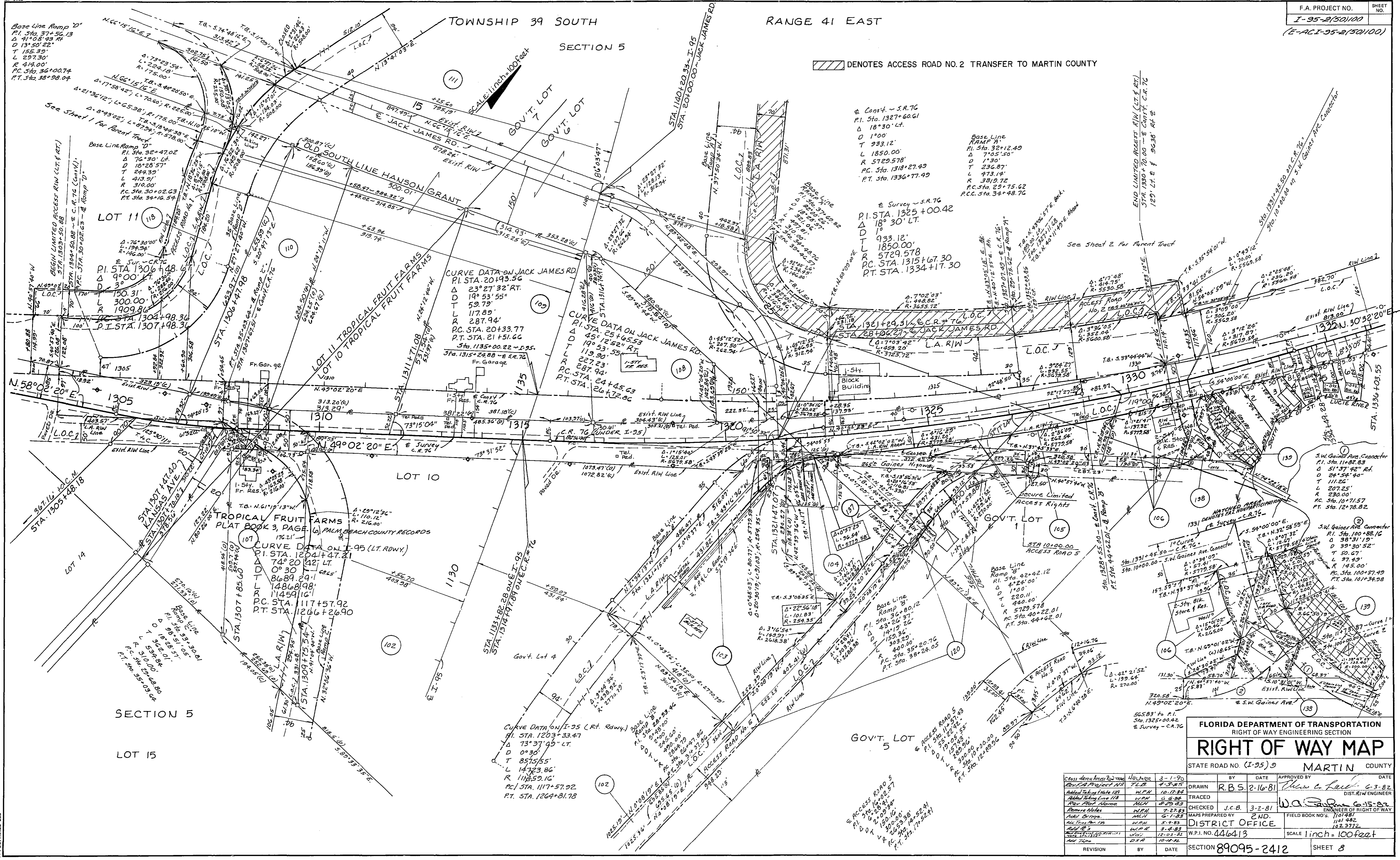
P.I. STA. 1288+36.08  
Δ 9°00' RT.  
D 3°  
T 150.31'  
L 300.00'  
R 1909.86'  
P.C. STA. 1286+85.77  
P.T. STA. 1289+85.77

P.I. STA. 1282+58.18  
Δ 9°03' 27" LT.  
D 3°  
T 151.27'  
L 301.92'  
R 1909.86'  
P.C. STA. 1281+06.91  
P.T. STA. 1284+08.83



TOWNSHIP 39 SOUTH RANGE 41 EAST SECTION 5

DIAGONAL HATCHING DENOTES ACCESS ROAD NO. 2 TRANSFER TO MARTIN COUNTY



SECTION 5

LOT 15

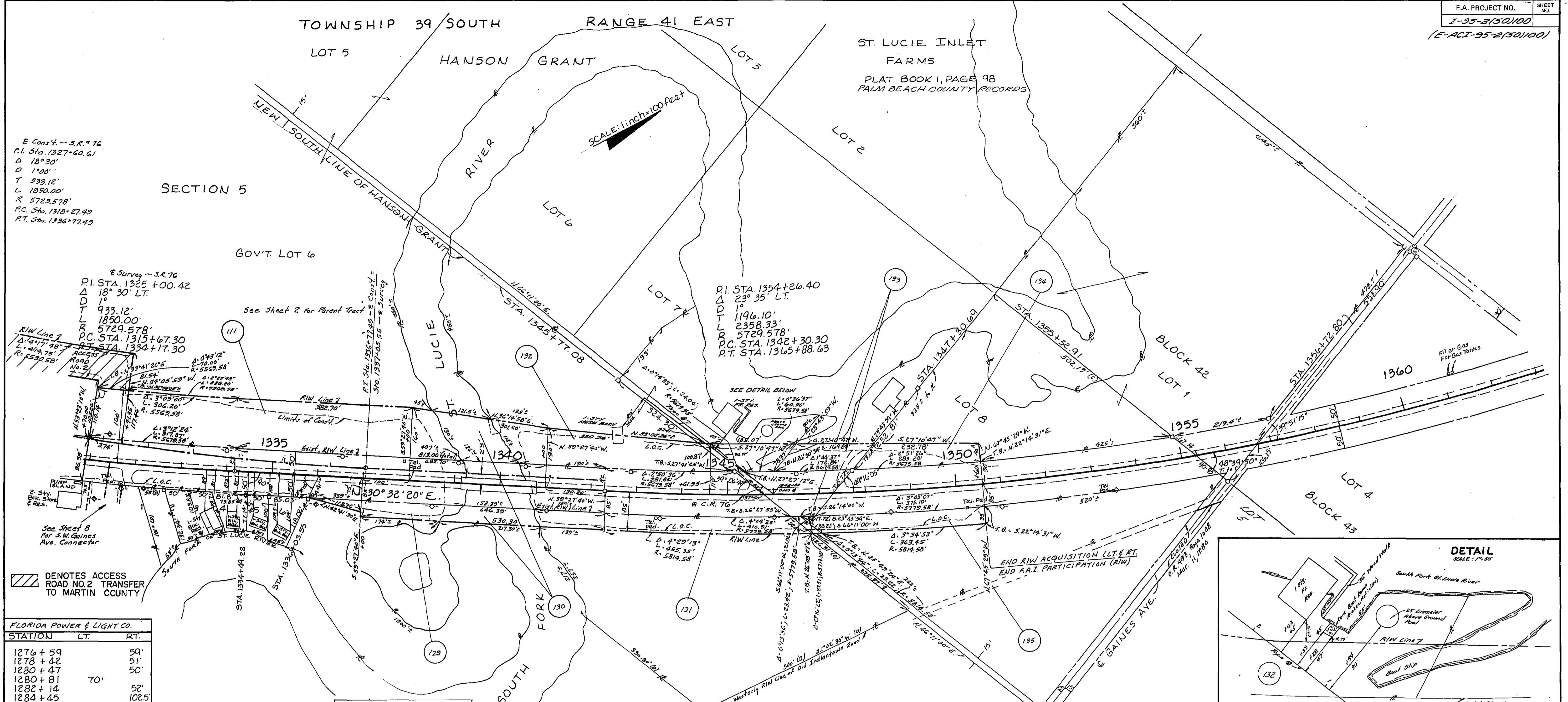
FLORIDA DEPARTMENT OF TRANSPORTATION  
RIGHT OF WAY ENGINEERING SECTION  
**RIGHT OF WAY MAP**

STATE ROAD NO. (I-95) MARTIN COUNTY

Class	Drawn	Checked	By	Date	Approved By	Date
Class	W.P.M.	J.C.B.	J.C.B.	3-2-81	W.A. Gorman	3-3-81
Revision	BY	DATE				
1	W.P.M.	10-12-84				
2	W.P.M.	11-11-84				
3	W.P.M.	12-22-84				
4	W.P.M.	1-14-85				
5	W.P.M.	2-27-85				
6	W.P.M.	3-4-85				
7	W.P.M.	3-11-85				
8	W.P.M.	3-11-85				
9	W.P.M.	3-11-85				
10	W.P.M.	3-11-85				
11	W.P.M.	3-11-85				
12	W.P.M.	3-11-85				
13	W.P.M.	3-11-85				
14	W.P.M.	3-11-85				
15	W.P.M.	3-11-85				
16	W.P.M.	3-11-85				
17	W.P.M.	3-11-85				
18	W.P.M.	3-11-85				
19	W.P.M.	3-11-85				
20	W.P.M.	3-11-85				
21	W.P.M.	3-11-85				
22	W.P.M.	3-11-85				
23	W.P.M.	3-11-85				
24	W.P.M.	3-11-85				
25	W.P.M.	3-11-85				
26	W.P.M.	3-11-85				
27	W.P.M.	3-11-85				
28	W.P.M.	3-11-85				
29	W.P.M.	3-11-85				
30	W.P.M.	3-11-85				
31	W.P.M.	3-11-85				
32	W.P.M.	3-11-85				
33	W.P.M.	3-11-85				
34	W.P.M.	3-11-85				
35	W.P.M.	3-11-85				
36	W.P.M.	3-11-85				
37	W.P.M.	3-11-85				
38	W.P.M.	3-11-85				
39	W.P.M.	3-11-85				
40	W.P.M.	3-11-85				
41	W.P.M.	3-11-85				
42	W.P.M.	3-11-85				
43	W.P.M.	3-11-85				
44	W.P.M.	3-11-85				
45	W.P.M.	3-11-85				
46	W.P.M.	3-11-85				
47	W.P.M.	3-11-85				
48	W.P.M.	3-11-85				
49	W.P.M.	3-11-85				
50	W.P.M.	3-11-85				
51	W.P.M.	3-11-85				
52	W.P.M.	3-11-85				
53	W.P.M.	3-11-85				
54	W.P.M.	3-11-85				
55	W.P.M.	3-11-85				
56	W.P.M.	3-11-85				
57	W.P.M.	3-11-85				
58	W.P.M.	3-11-85				
59	W.P.M.	3-11-85				
60	W.P.M.	3-11-85				
61	W.P.M.	3-11-85				
62	W.P.M.	3-11-85				
63	W.P.M.	3-11-85				
64	W.P.M.	3-11-85				
65	W.P.M.	3-11-85				
66	W.P.M.	3-11-85				
67	W.P.M.	3-11-85				
68	W.P.M.	3-11-85				
69	W.P.M.	3-11-85				
70	W.P.M.	3-11-85				
71	W.P.M.	3-11-85				
72	W.P.M.	3-11-85				
73	W.P.M.	3-11-85				
74	W.P.M.	3-11-85				
75	W.P.M.	3-11-85				
76	W.P.M.	3-11-85				
77	W.P.M.	3-11-85				
78	W.P.M.	3-11-85				
79	W.P.M.	3-11-85				
80	W.P.M.	3-11-85				
81	W.P.M.	3-11-85				
82	W.P.M.	3-11-85				
83	W.P.M.	3-11-85				
84	W.P.M.	3-11-85				
85	W.P.M.	3-11-85				
86	W.P.M.	3-11-85				
87	W.P.M.	3-11-85				
88	W.P.M.	3-11-85				
89	W.P.M.	3-11-85				
90	W.P.M.	3-11-85				
91	W.P.M.	3-11-85				
92	W.P.M.	3-11-85				
93	W.P.M.	3-11-85				
94	W.P.M.	3-11-85				
95	W.P.M.	3-11-85				
96	W.P.M.	3-11-85				
97	W.P.M.	3-11-85				
98	W.P.M.	3-11-85				
99	W.P.M.	3-11-85				
100	W.P.M.	3-11-85				
101	W.P.M.	3-11-85				
102	W.P.M.	3-11-85				
103	W.P.M.	3-11-85				
104	W.P.M.	3-11-85				
105	W.P.M.	3-11-85				
106	W.P.M.	3-11-85				
107	W.P.M.	3-11-85				
108	W.P.M.	3-11-85				
109	W.P.M.	3-11-85				
110	W.P.M.	3-11-85				
111	W.P.M.	3-11-85				
112	W.P.M.	3-11-85				
113	W.P.M.	3-11-85				
114	W.P.M.	3-11-85				
115	W.P.M.	3-11-85				
116	W.P.M.	3-11-85				
117	W.P.M.	3-11-85				
118	W.P.M.	3-11-85				
119	W.P.M.	3-11-85				
120	W.P.M.	3-11-85				
121	W.P.M.	3-11-85				
122	W.P.M.	3-11-85				
123	W.P.M.	3-11-85				
124	W.P.M.	3-11-85				
125	W.P.M.	3-11-85				
126	W.P.M.	3-11-85				
127	W.P.M.	3-11-85				
128	W.P.M.	3-11-85				
129	W.P.M.	3-11-85				
130	W.P.M.	3-11-85				
131	W.P.M.	3-11-85				
132	W.P.M.	3-11-85				
133	W.P.M.	3-11-85				
134	W.P.M.	3-11-85				
135	W.P.M.	3-11-85				
136	W.P.M.	3-11-85				
137	W.P.M.	3-11-85				
138	W.P.M.	3-11-85				
139	W.P.M.	3-11-85				
140	W.P.M.	3-11-85				
141	W.P.M.	3-11-85				
142	W.P.M.	3-11-85				
143	W.P.M.	3-11-85				
144	W.P.M.	3-11-85				
145	W.P.M.	3-11-85				
146	W.P.M.	3-11-85				
147	W.P.M.	3-11-85				
148	W.P.M.	3-11-85				
149	W.P.M.	3-11-85				
150	W.P.M.	3-11-85				

DISTRICT OFFICE  
SECTION 89095-2412 SHEET 8





± Const. - S.R. 76  
 P.I. STA. 1327+00.61  
 Δ 18° 30'  
 D 1° 00'  
 T 933.12'  
 L 1850.00'  
 R 5729.578'  
 P.C. Sta. 1318+27.49  
 P.T. Sta. 1336+77.49

± Survey - S.R. 76  
 P.I. STA. 1325+00.42  
 Δ 18° 30' LT.  
 D T L R  
 933.12'  
 1850.00'  
 5729.578'  
 P.C. STA. 1315+67.30  
 P.T. STA. 1334+17.30

P.I. STA. 1354+26.40  
 Δ 23° 35' LT.  
 D T L R  
 1196.10'  
 2358.33'  
 5729.578'  
 P.C. STA. 1342+30.30  
 P.T. STA. 1365+88.63

/// DENOTES ACCESS ROAD NO. 2 TRANSFER TO MARTIN COUNTY

FLORIDA POWER & LIGHT CO.		
STATION	LT.	RT.
1276 + 59		59'
1278 + 42		51'
1280 + 47		50'
1280 + 81	70'	
1282 + 14		52'
1284 + 45		102.5'
1284 + 64		81.5'
1289 + 76		138'
1290 + 61		139.5'
1295 + 97	88'	
1298 + 85	79'	
1301 + 50		101'
1301 + 65	82.5'	
1304 + 41	74.5'	
1306 + 11	64'	
1307 + 18	49'	
1308 + 89	94'	
1309 + 57	49'	
1311 + 32	48'	
1313 + 68	44'	
1313 + 73	44'	
1316 + 19	49'	
1318 + 69	49'	
1318 + 70	43'	
1320 + 99	58.5'	
1322 + 37	70'	
1322 + 47	49'	
1323 + 94	91'	
1325 + 29	112'	
1329 + 92	43'	
1331 + 38	47.5'	
1331 + 20	78'	
1331 + 74	49'	
1333 + 22	44.5'	

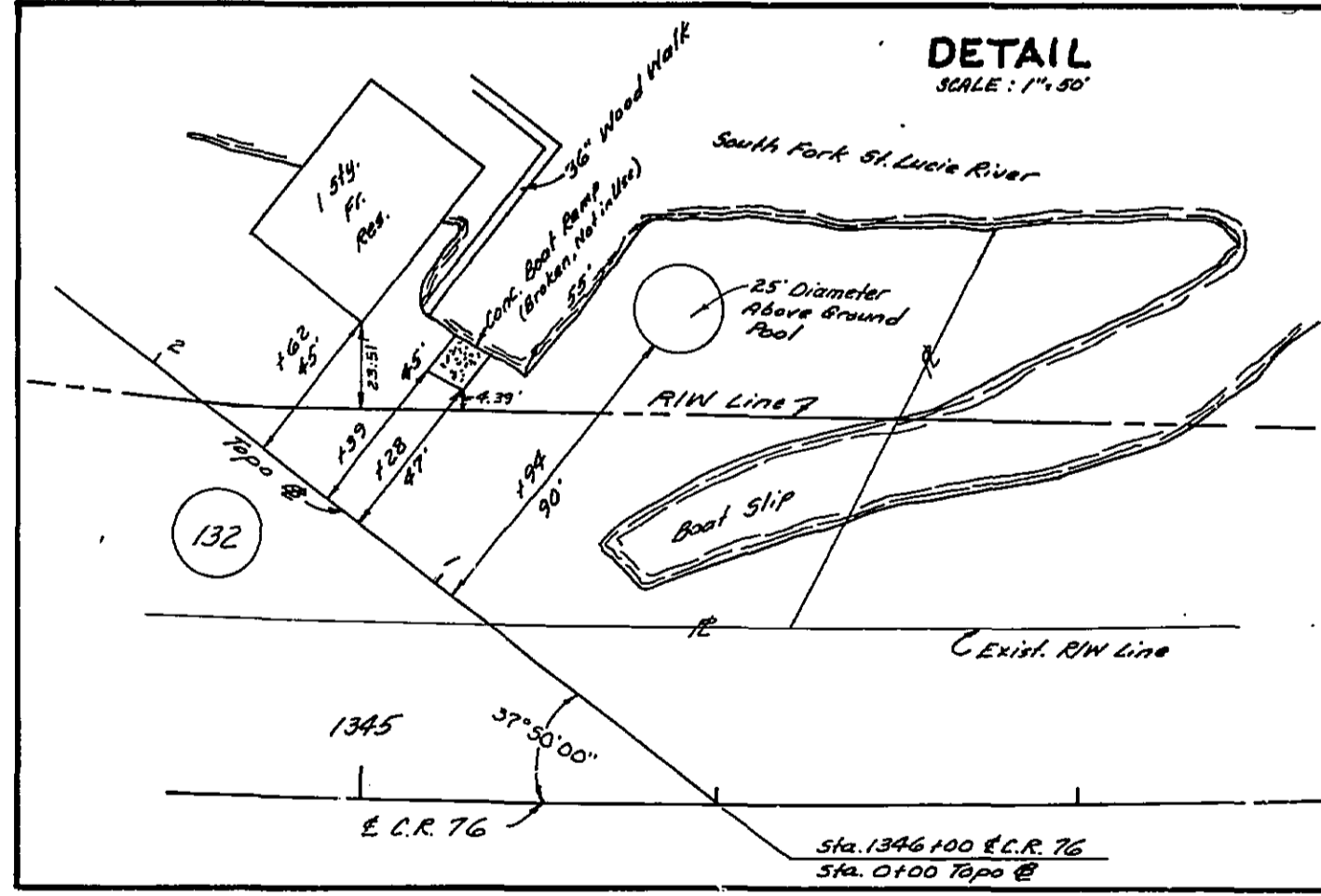
FLORIDA POWER & LIGHT CO.		
STATION	LT.	RT.
1334 + 45		45'
1335 + 99		46'
1338 + 54		48'
1341 + 06		44'
1343 + 55		43'
1345 + 18	43'	
1346 + 02	43.5'	
1348 + 75	46'	
1351 + 01		48.5'
1353 + 50		43'
1355 + 95		43'
1356 + 90	37'	
1358 + 25		42.7'
1360 + 55		43'

SOUTHERN BELL TELE.		
STATION	LT.	RT.
1278 + 04		45'
1281 + 66		50.5'
1287 + 00		78'
1287 + 24		77'
1289 + 76		138'
1290 + 56		105'
1292 + 08		90.6'
1292 + 08		92.6'
1296 + 20		79'
1298 + 41		108'
1307 + 17	49'	
1307 + 93	29'	
1312 + 50	40'	
1313 + 38	42.5'	
1317 + 31	29.5'	
1318 + 70	43'	
1326 + 11	42'	
1328 + 59	42'	
1328 + 98	47'	
1331 + 71	43.5'	
1342 + 94	41'	
1343 + 55	43'	

SOUTHERN BELL TELE.		
STATION	LT.	RT.
1345 + 18	45'	
1350 + 22	47'	
1353 + 46	47'	
1356 + 93	38'	

SOUTHERN BELL TELE.		
STATION	LT.	RT.
1278 + 04		45'
1278 + 42		51'
1298 + 85		79'
1301 + 65		82.5'
1304 + 41		74.5'
1306 + 11		64'
1307 + 18		44'
1308 + 89		94'
1311 + 32		48'
1313 + 68		48'
1316 + 19		49'
1313 + 73		44'
1318 + 69		49'
1318 + 70		43'
1319 + 80		45'
1320 + 99		58.5'
1321 + 16		48.5'
1322 + 47		49'
1322 + 64		85'
1324 + 65		40'
1326 + 82		45.5'
1328 + 99		46'
1331 + 20		78'

SOUTHERN BELL TELE.		
STATION	LT.	RT.
1331 + 38	47.5'	
1333 + 22	44.5'	
1333 + 99	41.5'	
1334 + 45	45'	
1335 + 99	46'	
1336 + 52	41.5'	
1339 + 06	41.5'	
1340 + 55	41.5'	
1342 + 85	42'	
1345 + 18	43'	
1346 + 48	42.5'	
1355 + 95	43'	
1356 + 90	37'	
1358 + 25	42.7'	



FLORIDA DEPARTMENT OF TRANSPORTATION  
 RIGHT OF WAY ENGINEERING SECTION  
**RIGHT OF WAY MAP**  
 STATE ROAD NO. (1-95) 9 MARTIN COUNTY  
 DRAWN BY R.B.S. DATE 2-17-81  
 CHECKED BY J.C.B. DATE 3-2-81  
 TRACED BY W.A.C. DATE 6-15-82  
 DISTRICT OFFICE  
 W.P.I. NO. 446413 SCALE 1 inch = 100 feet  
 SECTION 89095-2412 SHEET 9

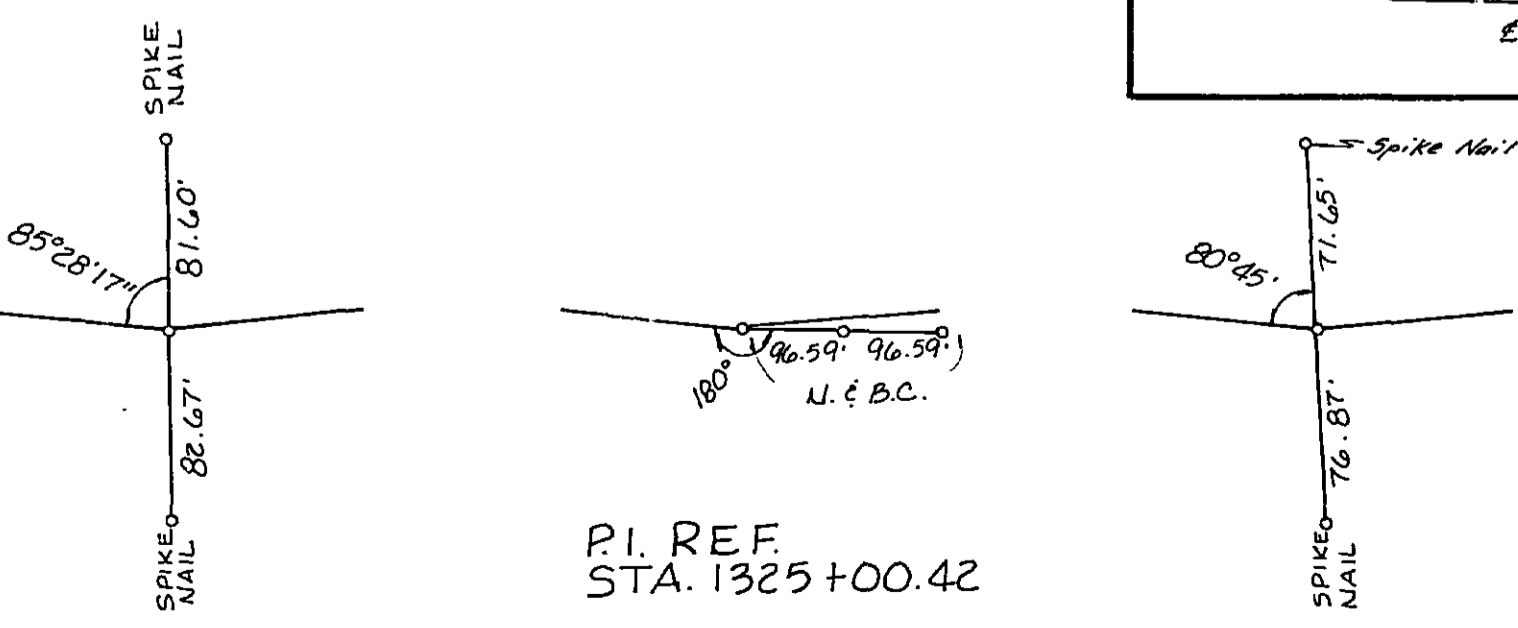




TABLE OF OWNERSHIPS

PARCEL NO.	SHEET NO.	NAME	AREA TAKEN			REMAINDERS		COMMENTS	PARCEL NO.	SHEET NO.	NAME	AREA TAKEN			REMAINDERS		COMMENTS
			NON L/A	L/A	TOTAL	RIGHT	LEFT					NON L/A	L/A	TOTAL	RIGHT	LEFT	
100.1	1 & 3	Robert C. Reed, Trustee	1.88 AC.	9.89 AC.	11.77 AC.	12.7 AC.±	14.2 AC.±	O.T., F.J.									
101.1	9	Douglass A. Arnold		46 sq. ft.	46 sq. ft.	0	5 AC.±	VOID									
102.1	3 & 8	J & B Ranch Corp.	0.82 AC.	19.63 AC.	20.45 AC.	5.12 AC.	4.2 AC.±	O.R.B. 621, PG. 2285									
103.1	3 & 8	B. H. Lane, Jr., et ux	14,297 sq. ft.	0.86 AC.	1.19 AC.	3.2 AC.±	0	O.T., F.J.									
104.1	8	Willie Sue Skinner		775 sq. ft.	775 sq. ft.	14,384 sq. ft.	0	O.R.B. 601, PG. 1495									
105.1	8	Woodrow A. Kantner, as trustee						Limited Access Rights Only O.R.B. 632 PG. 2332									
106.1	8	Ronald R. Kammel, et ux	3641 Sq. Ft.		3641 sq. ft.	19,228 sq. ft.	0	O.R.B. 603, PG. 88									
107.1	3 & 8	Robert G. Beardsley, et ux		12,294 sq. ft.	12,294 sq. ft.	0	2.09 AC.	O.T., F.J.									
108.1	3 & 8	Ozark Financial Corp.		2.03 AC.	2.03 AC.	0	0	O.R.B. 616, PG. 1992									
109.1	3 & 8	LuLu M. Barkoskie, et vir		4.24 AC.	4.24 AC.	0	0	O.R.B. 601, PG. 1273									
110.1	3 & 8	Willard T. Dustin, et ux		2.61 AC.	2.61 AC.	0	0	O.T., F.J.									
111.1	12,34,8 & 9	Martin Tabor, as Trustee	6.72 AC.	34.21 AC.	40.93 AC.	49.9 AC.±	77.0 AC.±	O.R.B. 587, PG. 787									
112.1	2 & 4	Anne Shulman	1.09 AC.	5.42 AC.	6.51 AC.	11.9 AC.±	0.60 AC.±	O.R.B. 621, PG. 2290									
113.1	2,4 & 5	Woodrow A. Kantner, as Trustee	13,670 sq. ft.	14.035 AC.	14.35 AC.	7.3 AC.±	59.0 AC.±	O.R.B. 607, PG. 256									
114.1	2 & 5	Corrado, NV	2.75 AC.	12.61 AC.	15.36 AC.	24.2 AC.±	5.7 AC.±	O.R.B. 614, PG. 296									
115.1	2 & 5	Clifford F. Pinkham, et al		2.05 AC.	2.05 AC.	0	2.25 AC.±	O.R.B. 607, PG. 269									
116.1	2 & 5	First Nat. Bank & Trust Co. of Stuart, as Trustee	8227 sq. ft.	1,646 sq. ft.	9873 sq. ft.	8.3 AC.±	0	O.R.B. 624, PG. 1786									
117.1	2,5 & 6	George H. Sands, et al	1.91 AC.	34.03 AC.	35.94 AC.	430.69 AC.±	44.05 AC.±	O.T., F.J.									
118.1	1,7 & 8	Ray Osborne Nutt, et als	2.09 AC.	2.823 AC.	4.91 AC.	0	11.9 AC.±	O.R.B. 601, PG. 1270 Uneconomic Remnant (Part of Lt. Remainder)									
119.1	7	Walter Adams	12606 sq. ft.	17619 sq. ft.	0.69 AC.	0	0.92 AC.	O.R.B. 610, PG. 2042									
120.1	3 & 8	Horace L. Keebler, Jr., et ux	1.04 AC.		1.04 AC.	3.2 AC.±	0	O.R.B. 621, PG. 2311									
121.1	1 & 7	F.D. Jordan, Jr., et als	0.85 AC.	14,981 sq. ft.	1.19 AC.	0	29.2 AC.±	O.R.B. 587, PG. 254									
122.1	7	John D. Saxon, Jr., as Trustee	18,103 sq. ft.	0	18,103 sq. ft.	0	1.55 AC.	O.R.B. 596, PG. 447									
123.1	7	V. James Navitsky, et al	11,559 sq. ft.	0	11,559 sq. ft.	0	1.16 AC.	O.R.B. 616, PG. 1994									
124.1	7	Ted Bishop, et ux	6,078 sq. ft.	0	6,078 sq. ft.	2.47 AC.	0	O.R.B. 625, PG. 1432									
125.1	7	Carl Sauvage, et al	19,720 sq. ft.	0	19,720 sq. ft.	2,790 AC.	0	O.R.B. 629, PG. 808									
126.1	7	Donald Daggeller, et ux	5,413 sq. ft.	0	5,413 sq. ft.	6.98 AC.	0	O.R.B. 610, PG. 2039									
127.1	7	Barbara Ann Turner	725 sq. ft.	0	725 sq. ft.	3.5 AC.±	0	O.R.B. 614, PG. 293									
128.1	7	Padero, Inc.						Limited Access Rights Only O.R.B. 632, PG. 2395									
129.1	9	John T. Black, as Trustee	8,433 sq. ft.	0	8,433 sq. ft.	2.5 AC.±	0	O.T., F.J.									
130.1	9	T.I.I.T.F.	0.74 AC.	0	0.74 AC.			ST LUCIE RIVER									
131.1	9	James A Kern Trustee	20,287 sq. ft.	0	20,287 sq. ft.	4.4 AC.±	0	O.T., F.J.									
132.1	9	Thomas J. Rissacher	0.94 AC.	0	0.94 AC.	0	3 AC.±	O.T., F.J.									
133.1	9	Fred James Walton	10,284 sq. ft.	0	10,284 sq. ft.	0	0.6 AC.±	O.R.B. 612, PG. 252									
134.1	9	Richard Lebo, et ux	12,652 sq. ft.	0	12,652 sq. ft.	0	9.9 AC.±	O.R.B. 619, PG. 2328									
135.1	9	Robert Birely, et ux	13,219 sq. ft.	0	13,219 sq. ft.	2.2 AC.±	0	O.R.B. 604, PG. 2032									
136.1	5	Emma T. Ashley	288 sq. ft.	0	288 sq. ft.	2.8 AC.±	0	O.T., F.J.									
137.1	8	Ruth M. Mahan, et al	0.59 AC.	0	0.59 AC.	0	1.4 AC.±	O.T., F.J.									
138.1	8	Herbert L. Kammel	3963 sq. ft.	0	3963 sq. ft.	0	0	O.R.B. 624, PG. 1782									
139.1	8	Flora M. Lavoie, et	14636 sq. ft.	0	14636 sq. ft.	0	0	9123 sq. ft. F.A.I. Non-Participation O.R.B. 612, PG. 816									
140.1		Martin County						Streets and Roads O.R.B. 610, PG. 2050									
141.1	5	Elizabeth G. Matousak, Widow		11,570 Sq. Ft.	11,570 Sq. Ft.	2.5 AC.±	0	O.R.B. 601, PG. 1498									
142.1	5	George H. Sands and Edward G. Steele		5873 Sq. Ft.		1884 Sq. Ft.		VOID									

FLORIDA DEPARTMENT OF TRANSPORTATION  
RIGHT OF WAY ENGINEERING SECTION

## RIGHT OF WAY MAP

STATE ROAD NO. (I-95) 9 MARTIN COUNTY

APPROVED BY: *Edward C. Reed* DATE: 6-3-82  
DISTRICT R/W ENGINEER

TRACED: *W.A. Steele* DATE: 6-15-82  
ENGINEER OF RIGHT OF WAY

MAPS PREPARED BY: 2 ND DISTRICT OFFICE  
W.P.I. NO. 446413 SCALE: \_\_\_\_\_

SECTION 89095-2412 SHEET 10 OF 10

Chg. Name 128	MLH	10-28-89
Rev. Parc 137	W.R.H.	10-17-89
Rev. Name 114	MLH	8-20-89
Rev. Name 115	W.R.H.	6-18-89
Rev. Name 118	W.R.H.	6-6-89
Rev. Name 119	W.R.H.	5-1-89
Rev. Name Parc 115	BDS	4-23-89
Rev. Name 104-141	BDS	3-27-89
Name Change Parc 100	BDS	2-27-89
Rev. Parc 131	BDS	2-28-89
Rev. Chg. Name 119	W.R.H.	12-21-89
Rev. Area 115, 118, 119	MLH	8-29-89
Add Parc to US 114	W.R.H.	6-28-89
Rev. Name 114, 115, 118, 119	W.R.H.	6-6-89
Rev. Chg. 107, Rev. Chg. Parc 139	MLH	6-1-89
Rev. Parc 125	W.R.H.	5-6-89
Rev. Chg. Name 119	W.R.H.	3-2-89
Chg. Name 104, 115	D.S.A.	2-25-89
Rev. Name 111, Name: Cylral	D.S.A.	2-23-89
Chg. Name Parc 140	W.R.H.	1-13-89
Rev. Chg. Parc 142	W.R.H.	3-25-85

POLYTRACE 033