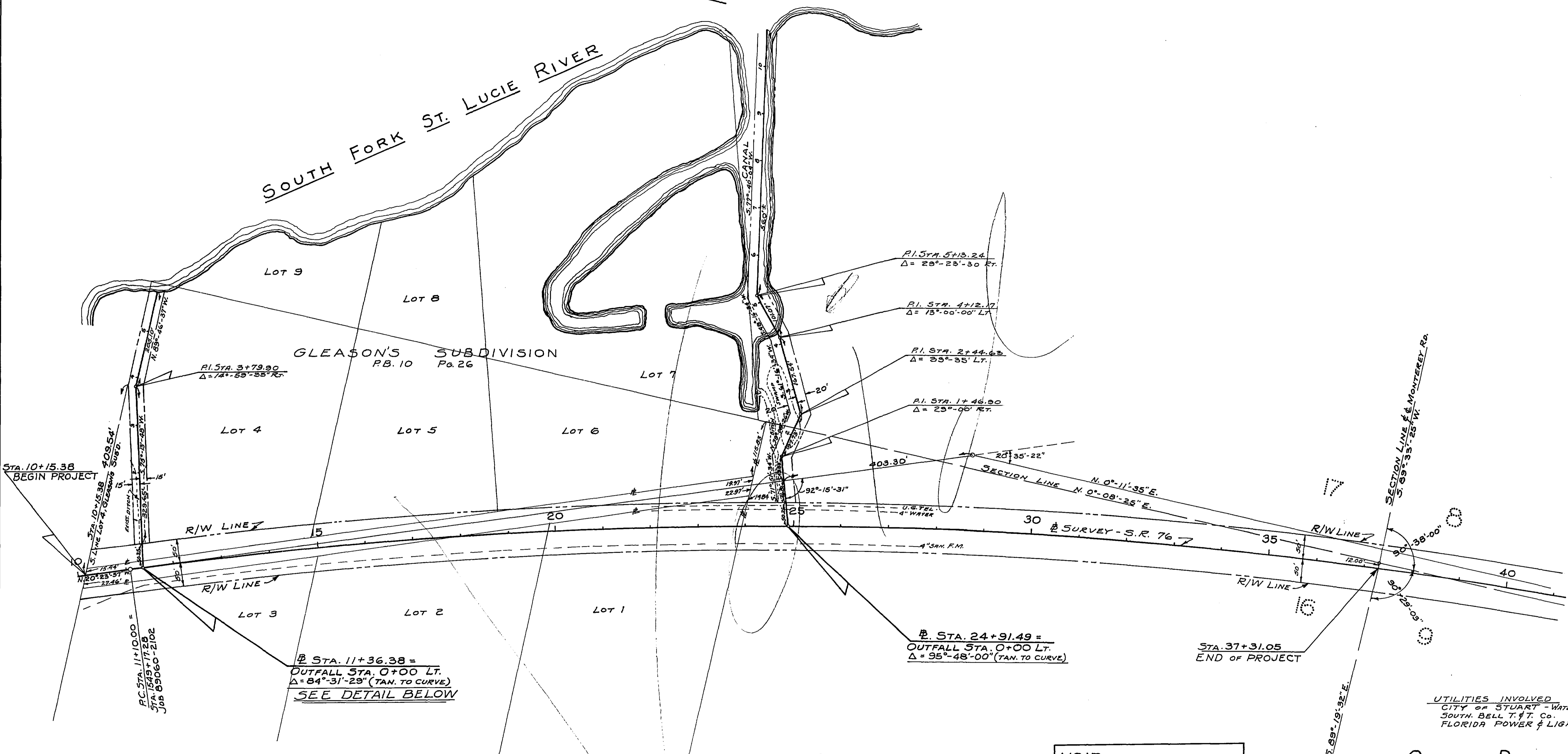


SCALE - 1" = 100'
TWP. 38S. - R6E. 41E.

SOUTH FORK ST. LUCIE RIVER



STA. 10+15.38
BEGIN PROJECT

PC STA. 11+10.00 =
STA. 10+15.38
STA. 11+17.28
JOB 89060-2102

ST. STA. 11+36.38 =
OUTFALL STA. 0+00 LT.
Δ = 84°-31'-29" (TAN. TO CURVE)
SEE DETAIL BELOW

ST. STA. 24+91.49 =
OUTFALL STA. 0+00 LT.
Δ = 95°-48'-00" (TAN. TO CURVE)

STA. 37+31.05
END OF PROJECT

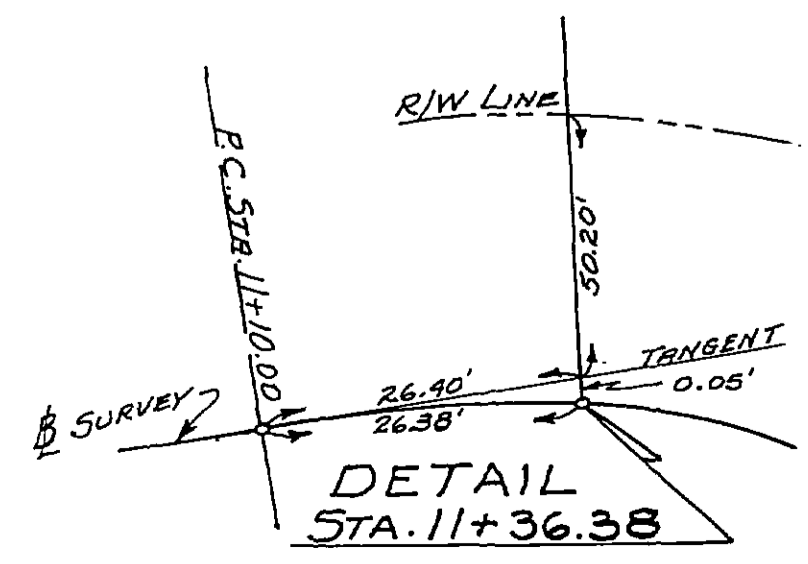
§ SURVEY CURVE DATA
P.I. STA. 28+94.06
Δ = 20°-35'-22"
D = 0°-35'-00" (CHORD DEF.)
R = 9822.18'
T = 1784.06'
L = 3529.62'

VOID
SEE REPLACEMENT MAP
89060-2503, SHEET I-A OF I
DRAWN 10-68

UTILITIES INVOLVED
CITY OF STUART - WATER & SEWERS
SOUTH BELL T. & T. CO.
FLORIDA POWER & LIGHT CO.

OUTFALL DITCHES

STATE OF FLORIDA STATE ROAD DEPARTMENT			
RIGHT OF WAY MAP			
STATE ROAD No. 76		MARTIN COUNTY	
BY	DATE	APPROVED BY	DATE
DRAWN	MERTZ 4-68	<i>[Signature]</i>	
TRACED	MERTZ 4-68	DISTRICT ENGINEER	
CHECKED		<i>[Signature]</i>	4-26-68
COMPARED		ENGINEER OF RIGHTS OF WAY	
INDEXED		STATE HIGHWAY ENGINEER	



REVISION	BY	DATE