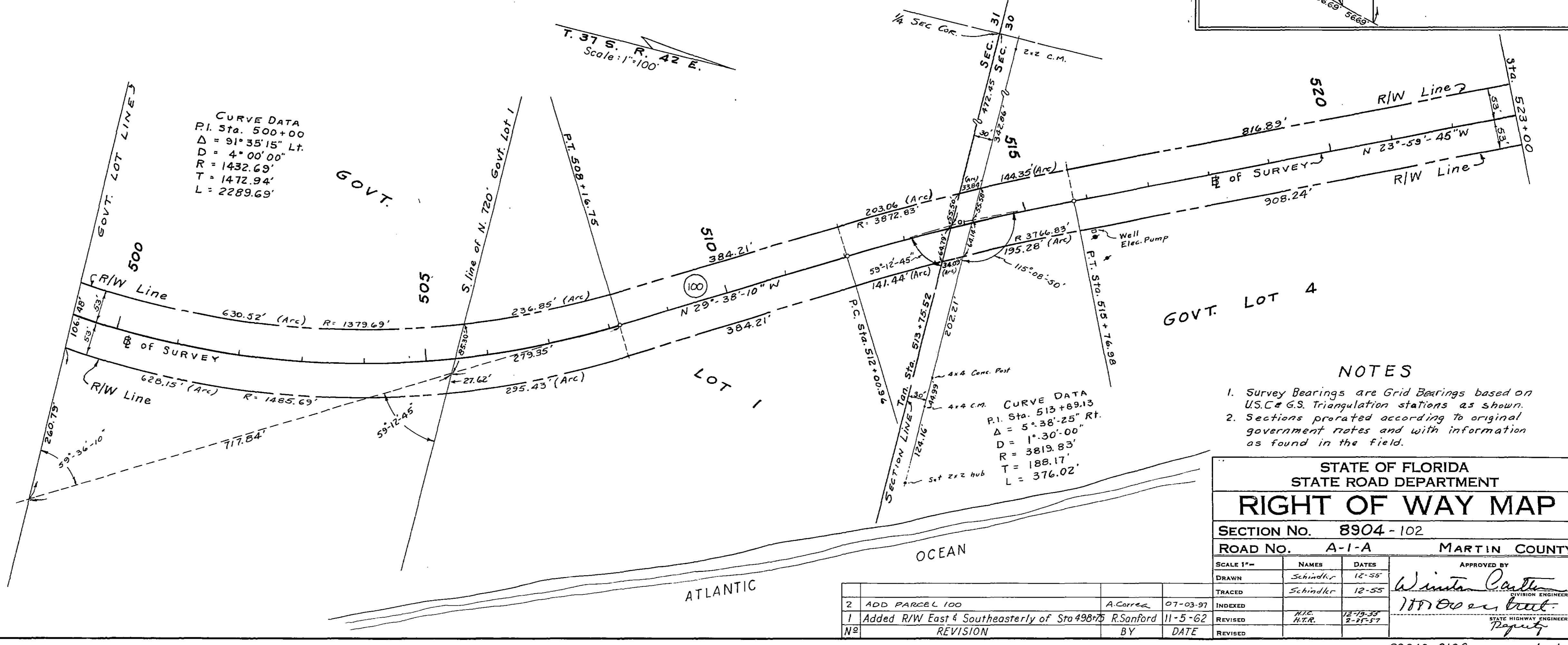
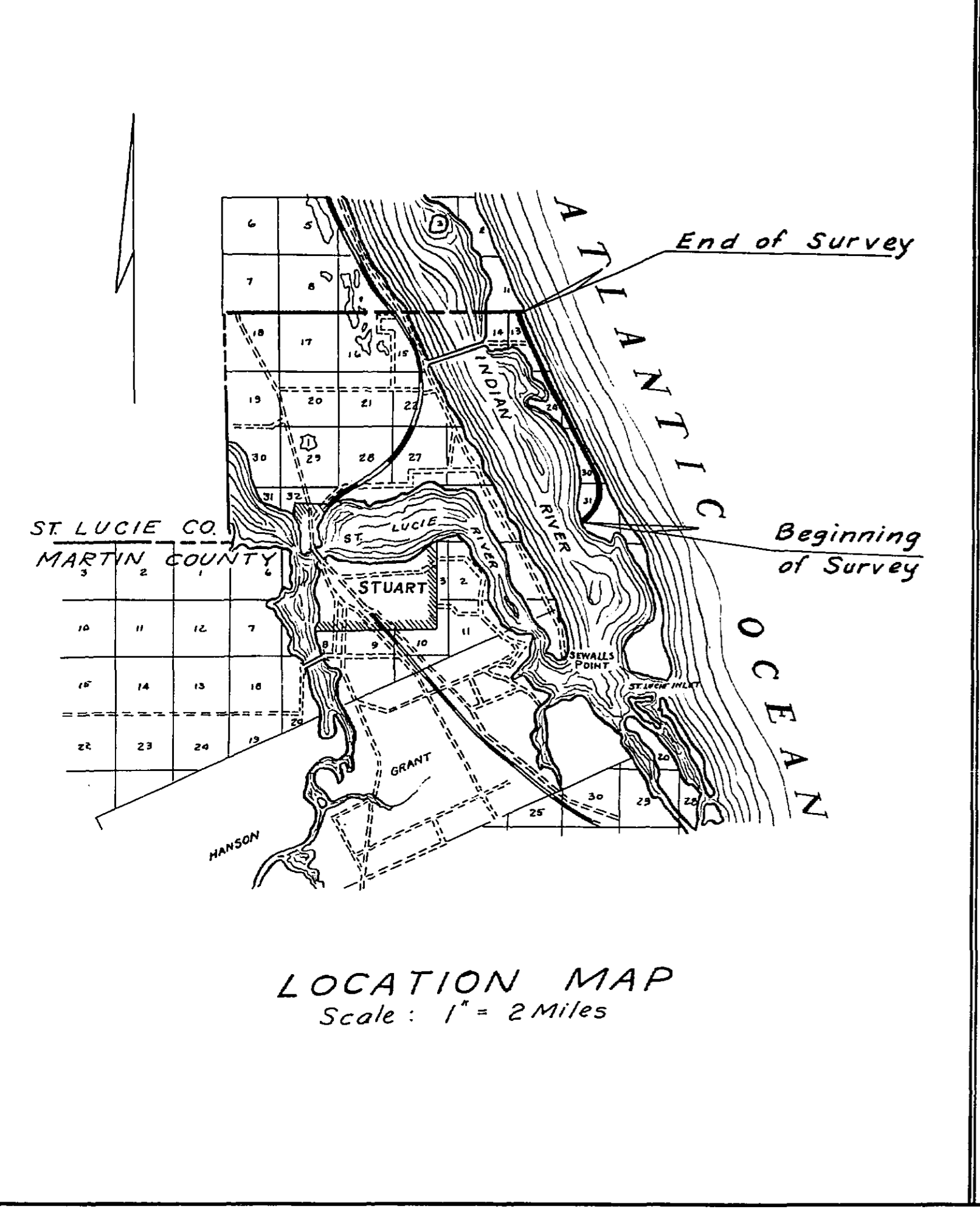
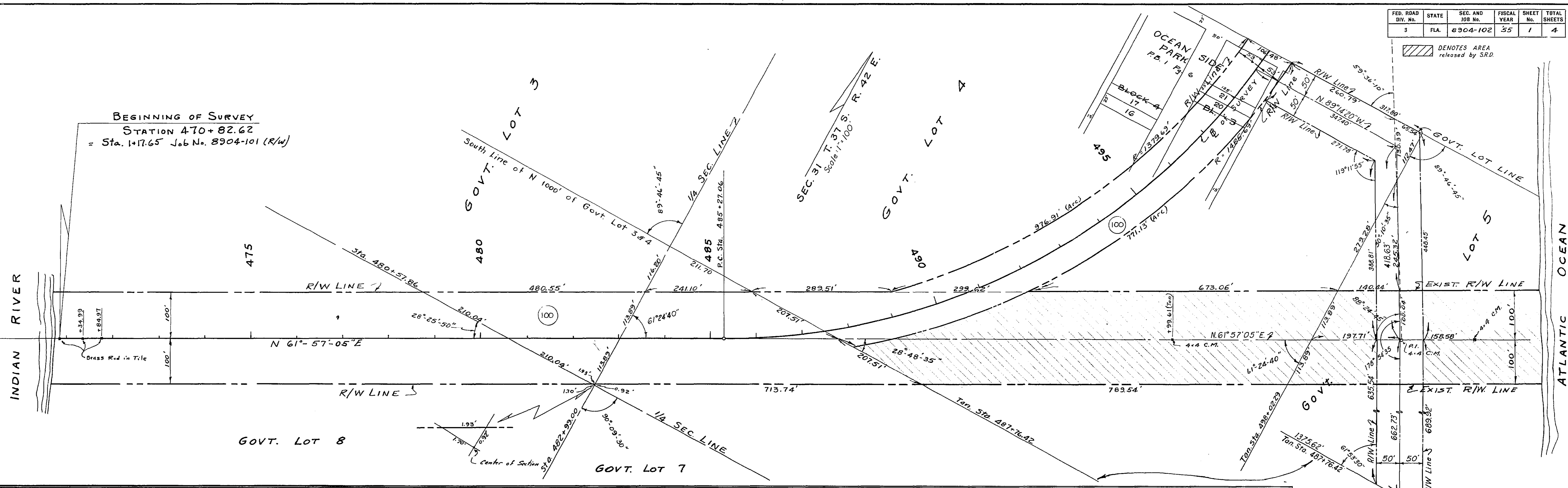


/// DENOTES AREA released by SRD.



**NOTES**

- Survey Bearings are Grid Bearings based on U.S.C. & G.S. Triangulation stations as shown.
- Sections prorated according to original government notes and with information as found in the field.

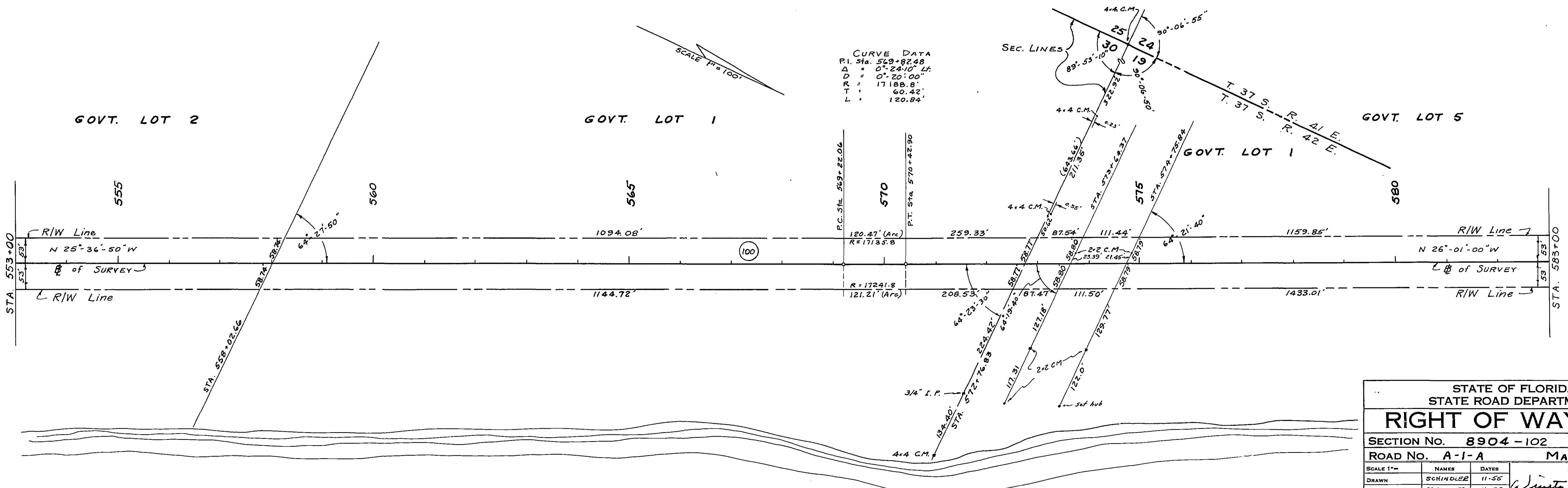
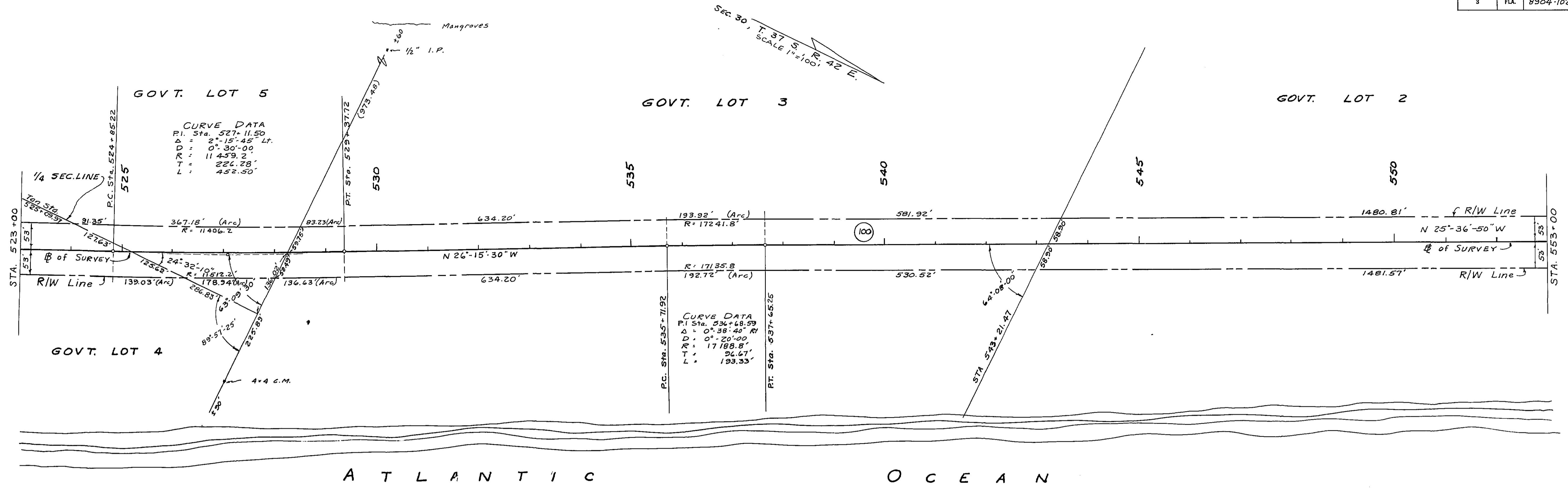
**STATE OF FLORIDA  
STATE ROAD DEPARTMENT**

**RIGHT OF WAY MAP**

SECTION NO. 8904-102  
ROAD NO. A-1-A MARTIN COUNTY

SCALE 1"=	NAMES	DATES	APPROVED BY
DRAWN	Schindler	12-55	<i>Winston Carter</i> DIVISION ENGINEER
TRACED	Schindler	12-55	
INDEXED			<i>Winston Carter</i> STATE HIGHWAY ENGINEER
REVISED	H.R.	12-19-55 2-25-57	
REVISED			<i>Poppy</i>

NO.	REVISION	BY	DATE
2	ADD PARCEL 100	A. Correa	07-03-97
1	Added R/W East 4 Southeasterly of Sta 498+75	R. Sanford	11-5-62



STATE OF FLORIDA  
STATE ROAD DEPARTMENT

### RIGHT OF WAY MAP

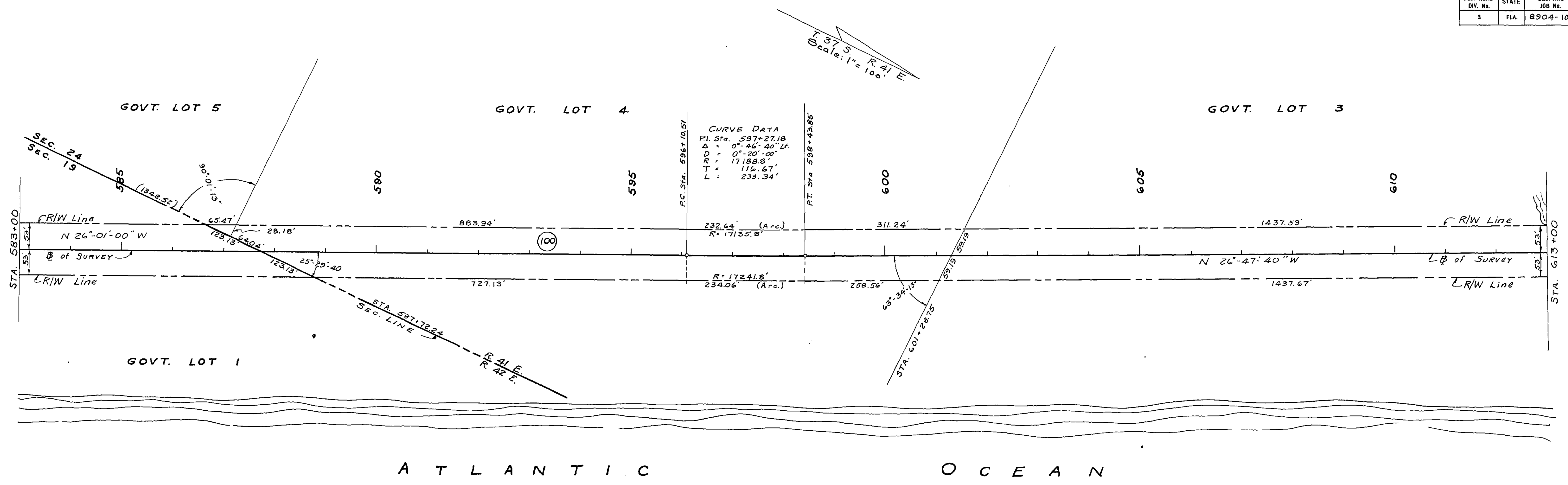
SECTION NO. 8904-102  
ROAD NO. A-1-A MARTIN COUNTY

SCALE 1"=	NAMES	DATES	APPROVED BY
DRAWN	SCHINDLER	11-55	<i>Winton Carbo</i> DIVISION ENGINEER
TRACED	SCHINDLER	11-55	
INDEXED			<i>Winton Carbo</i> STATE HIGHWAY ENGINEER
REVISION			

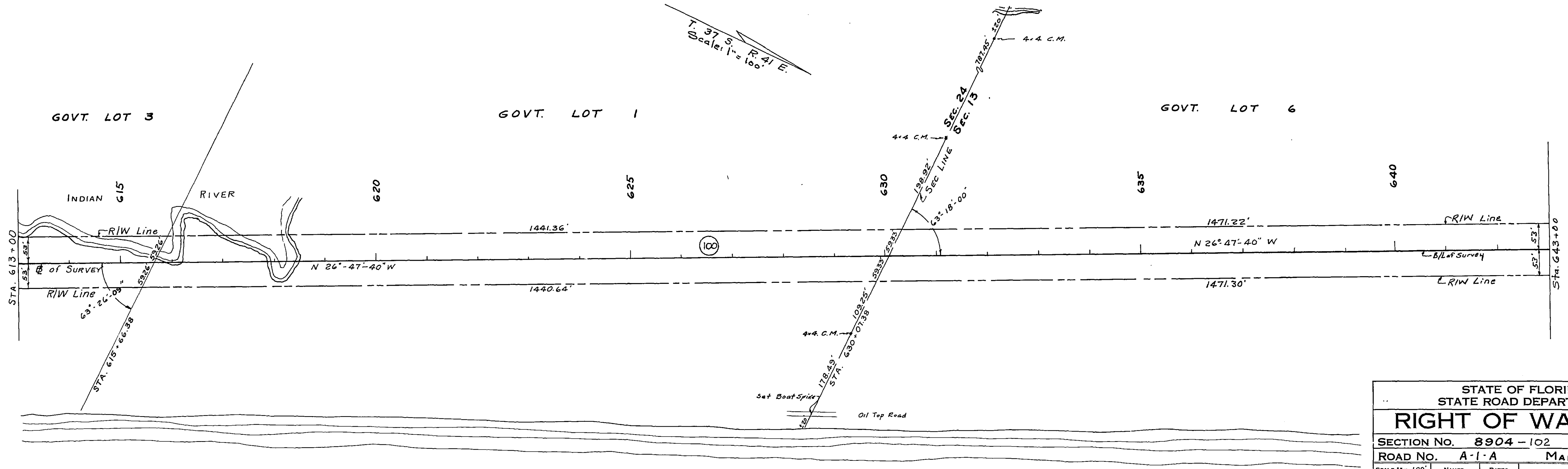
ADD PARCEL 100 REVISION BY DATE

06-27-97

FED. ROAD DIV. No.	STATE	SEC. AND JOB No.	FISCAL YEAR	SHEET No.	TOTAL SHEETS
3	FLA.	8904-102	55	3	4



A T L A N T I C O C E A N




A T L A N T I C O C E A N

STATE OF FLORIDA  
STATE ROAD DEPARTMENT

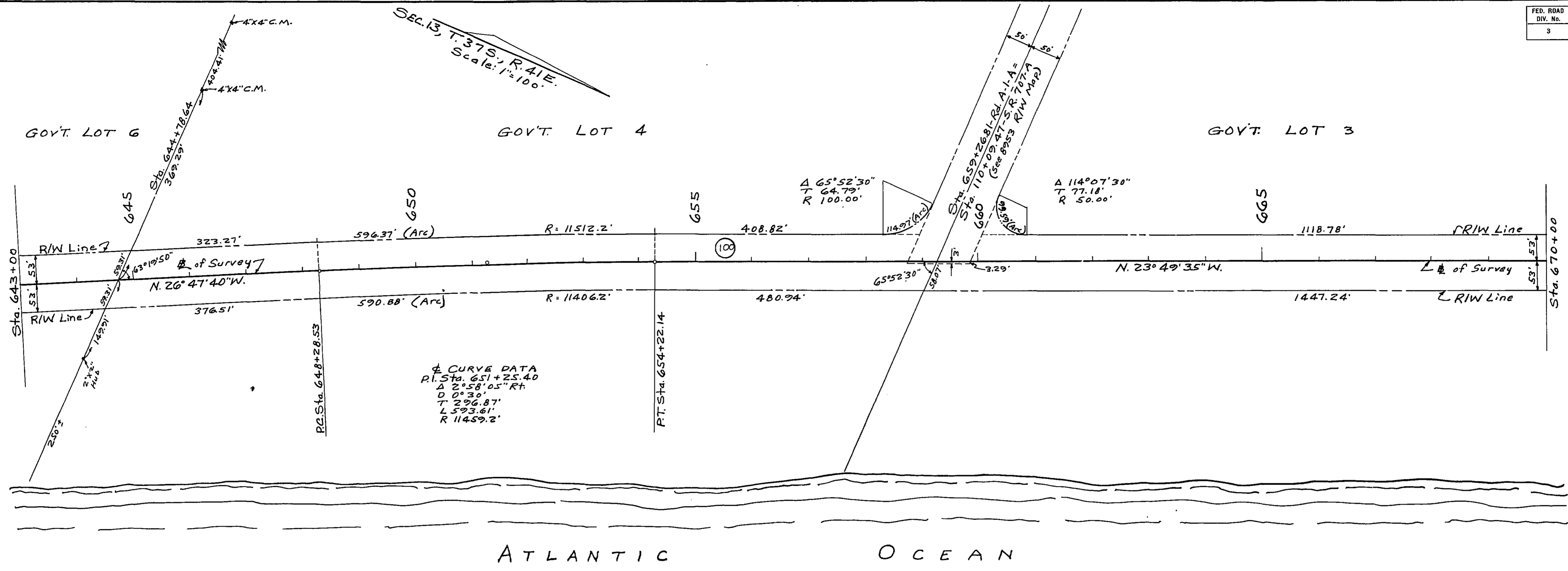
## RIGHT OF WAY MAP

SECTION No. 8904-102  
ROAD No. A-1-A MARTIN COUNTY

SCALE 1" = 100'	NAMES	DATES	APPROVED BY
DRAWN	SCHINDLER	11-55	 DIVISION ENGINEER
TRACED	SCHINDLER	11-55	
INDEXED			
REVISED		2-20-56	

STATE HIGHWAY ENGINEER  
*Requig*

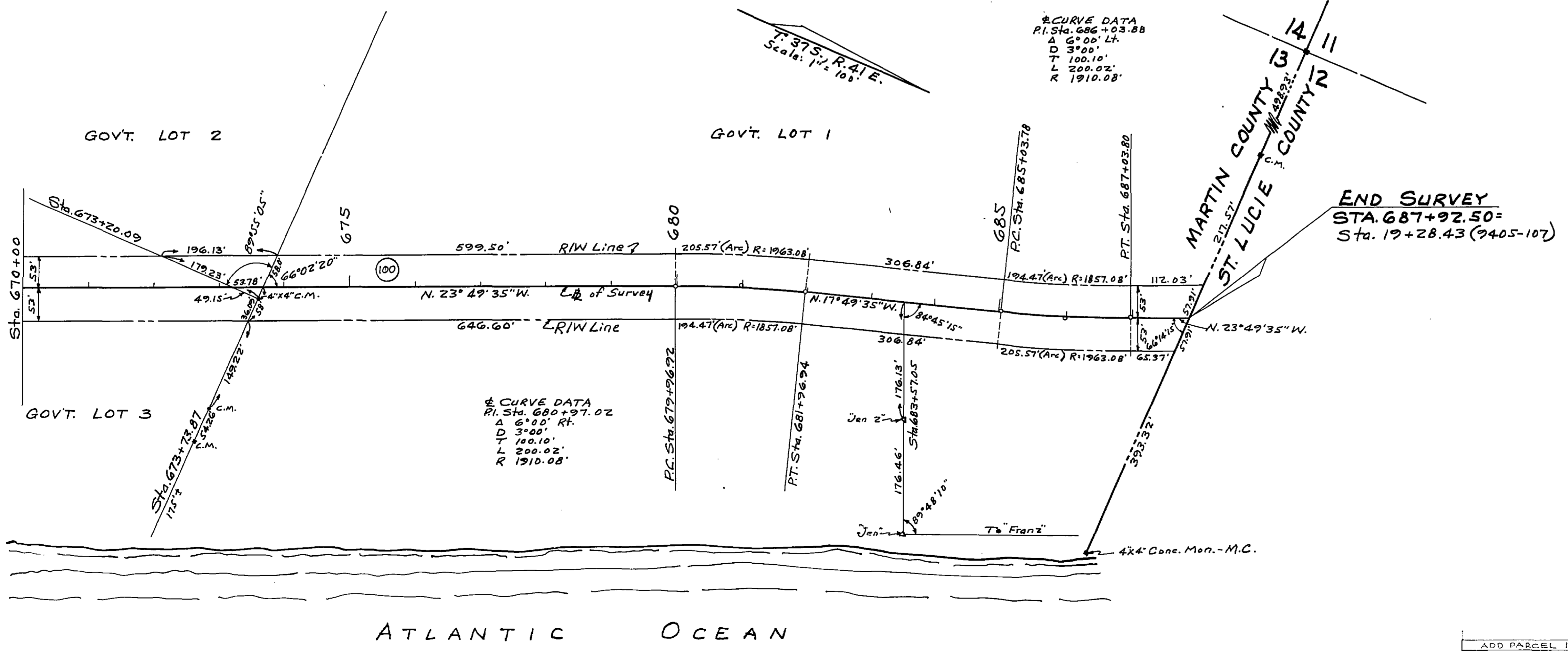
ADD PARCEL 100	A.G.M.	06-30-59
REVISION	BY	DATE



☉ CURVE DATA  
 P.I. Sta. 651+25.40  
 Δ 2° 58' 05" Rt  
 D 0° 30'  
 T 296.87'  
 L 593.61'  
 R 11459.2'

Δ 65° 52' 30"  
 T 64.79'  
 R 100.00'

Δ 114° 07' 30"  
 T 77.18'  
 R 50.00'



☉ CURVE DATA  
 P.I. Sta. 686+03.88  
 Δ 6° 00' Lt  
 D 3° 00'  
 T 100.10'  
 L 200.02'  
 R 1910.08'

☉ CURVE DATA  
 P.I. Sta. 680+97.02  
 Δ 6° 00' Lt  
 D 3° 00'  
 T 100.10'  
 L 200.02'  
 R 1910.08'

END SURVEY  
 STA. 687+92.50 =  
 Sta. 19+28.43 (9405-107)

PARCEL	SHEET No.	NAME	RECORDING DATA
100	1,2,3,4	JENSEN CIVIC LEAGUE	D.R.B. 1215, PG 1830

STATE OF FLORIDA  
 STATE ROAD DEPARTMENT

## RIGHT OF WAY MAP

SECTION No. 8904-102  
 ROAD No. A-1-A      Martin COUNTY

SCALE 1" = 100'	NAMES	DATES	APPROVED BY
DRAWN	Schindler	11-55	<i>[Signature]</i> STATE HIGHWAY ENGINEER
TRACED	Annex	2-20-56	
INDEXED			
REVISED			

ADD PARCEL 100 REVISION BY DATE