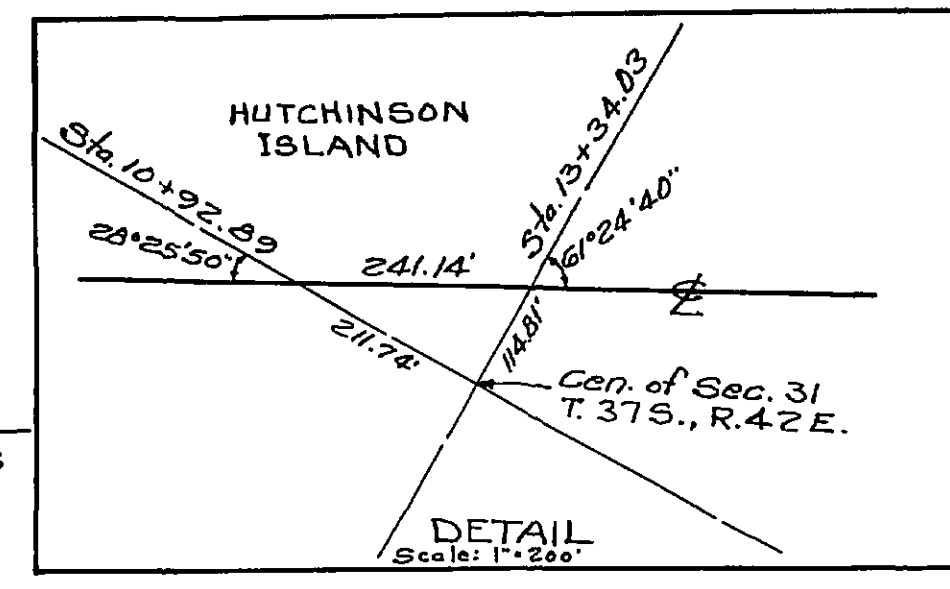


P.I. Sta. 143+91.70  
 $\Delta$  43°00'11" Lt.  
 D 14.5'  
 T 1289.83'  
 L 2457.32'  
 R 3274.17'  
 P.C. Sta. 131+01.87  
 P.T. Sta. 155+59.19

P.I. Sta. 113+29.96  
 $\Delta$  12°49'51" Rt.  
 D 14.5'  
 T 368.15'  
 L 733.19'  
 R 3274.17'  
 P.C. Sta. 109+61.81  
 P.T. Sta. 116+95.00

P.I. Sta. 4+68.65  
 $\Delta$  2°21' Rt.  
 D 1'00"  
 T 117.52'  
 L 235.00'  
 R 5729.65'  
 P.C. Sta. 3+51.13  
 P.T. Sta. 5+86.13

NOTE:  
 CROSS HATCHING ABOVE INDICATES  
 AREAS DISCLAIMED BY THE  
 DEPARTMENT OF TRANSPORTATION  
 AND RELEASED TO T.I.T.F.



**KEY MAP**

Note: Bearings are based on U.S.C. & G.S. and U.S.E.D. data.

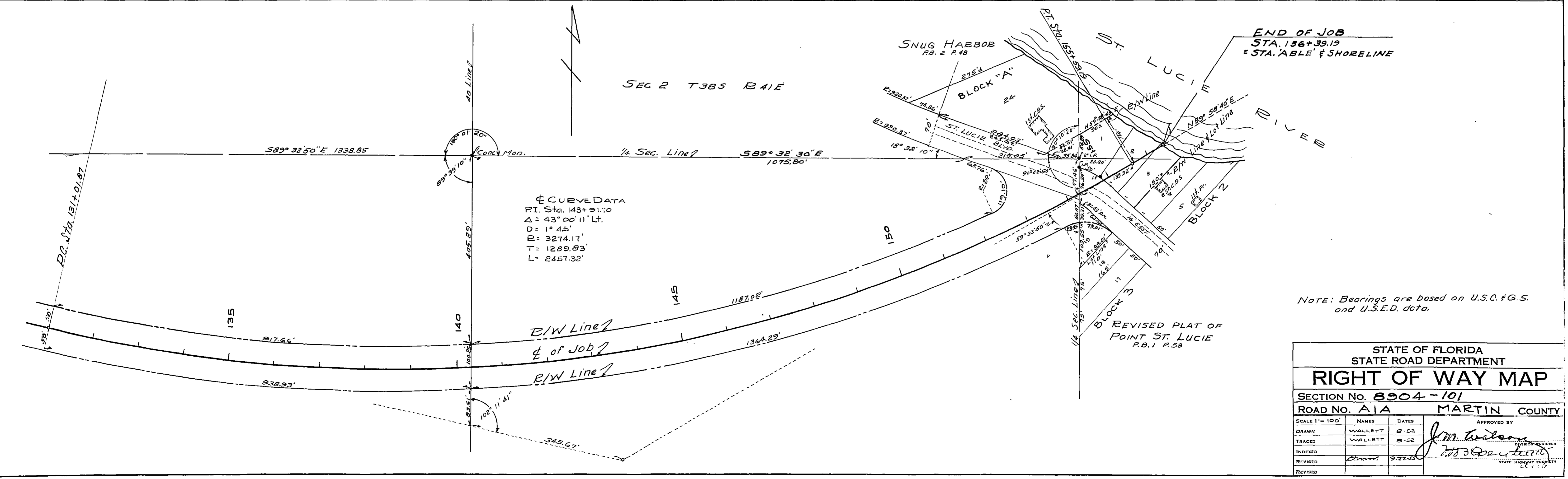
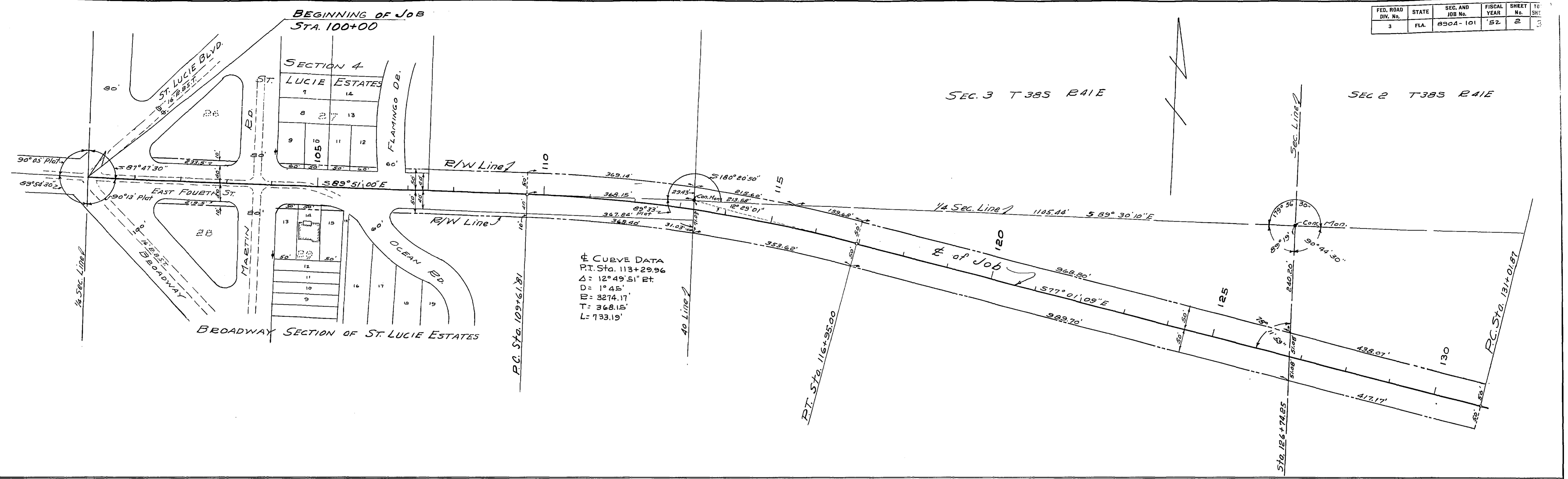
Note: This Right of Way Map is based on survey and map by Parsons, Brinckerhoff, Hall and MacDonald, Titled St. Lucie and Indian River Bridges, Preliminary Alignment and Triangulation, Sheets 1-A; 2A and 3A, dated Feb. and March 1952, and supplemented by field surveys and record plats, to include the extension of East Fourth St. to the west approach of the west bridge, and to establish the Right of Way lines in conformity with S.R.D. Standards. This map is supplemental to, and is made a part of the above described map.

STATE OF FLORIDA STATE ROAD DEPARTMENT			
<b>RIGHT OF WAY MAP</b>			
SECTION No. 8904-101			
ROAD NO. A1A		MAITIN COUNTY	
SCALE 1"=1000'	NAMES	DATES	
DRAWN	WALLETT	8-52	
TRACED	WALLETT	8-52	
INDEXED			
REVISED	S.N.M.	1-25-57	
REVISED			

APPROVED BY  
*J.M. Watson*  
 DIVISION ENGINEER

ADD T.I.T.F. RELEASE	STOUT	9-5-80
ADD DETAIL	DIBENEDETTO	7-11-78
REVISION	BY	DATE

FED. ROAD DIV. No.	STATE	SEC. AND JOB No.	FISCAL YEAR	SHEET No.	TOTAL SHEETS
3	FLA.	8904-101	'52	2	3



STATE OF FLORIDA  
 STATE ROAD DEPARTMENT

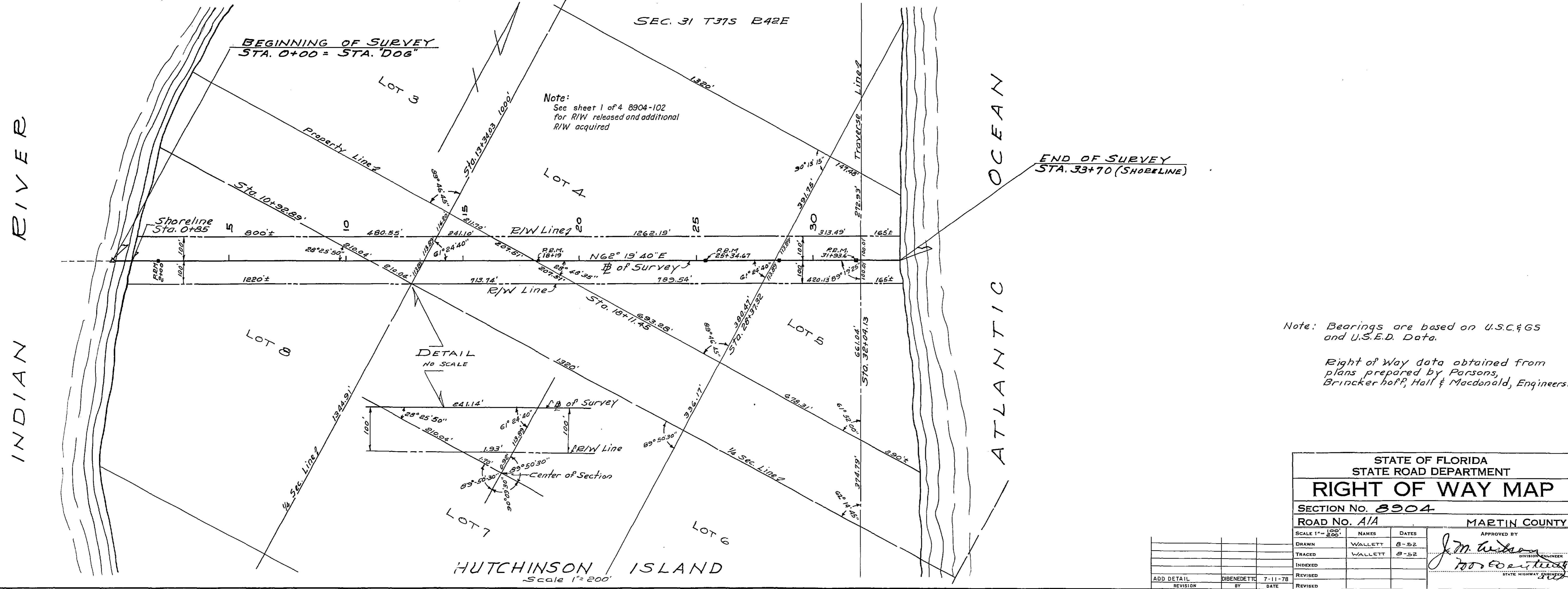
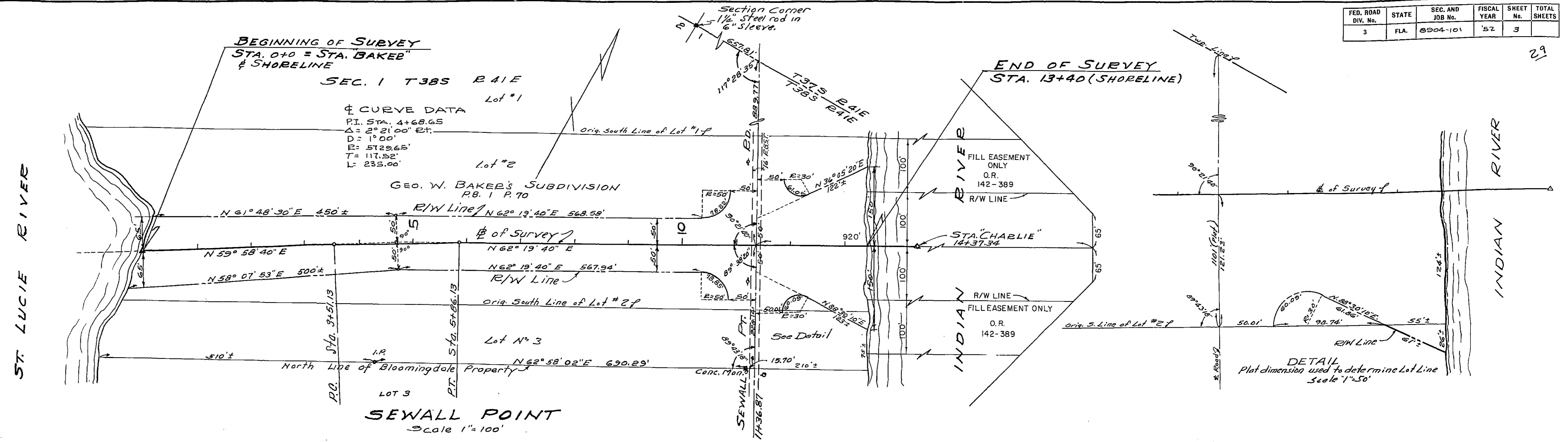
### RIGHT OF WAY MAP

SECTION NO. 8904-101  
 ROAD NO. A1A MARTIN COUNTY

SCALE 1" = 100'	NAMES	DATES	APPROVED BY
DRAWN	WALLETT	8-52	<i>J. M. Wilson</i> DIVISION ENGINEER
TRACED	WALLETT	8-52	
INDEXED	Drum	9-22-55	
REVISED			

STATE HIGHWAY ENGINEER

FED. ROAD DIV. No.	STATE	SEC. AND JOB No.	FISCAL YEAR	SHEET No.	TOTAL SHEETS
3	FLA.	8904-101	'52	3	



STATE OF FLORIDA STATE ROAD DEPARTMENT	
RIGHT OF WAY MAP	
SECTION NO. 8904	
ROAD NO. A/A MARTIN COUNTY	
SCALE 1" = 100' / 200'	NAMES
DRAWN	WALLETT 8-52
TRACED	WALLETT 8-52
INDEXED	
REVISED	
ADD DETAIL	DIBENEDETTO 7-11-78
REVISION	BY DATE