

BORROW PIT

STATE OF FLORIDA
STATE ROAD DEPARTMENT

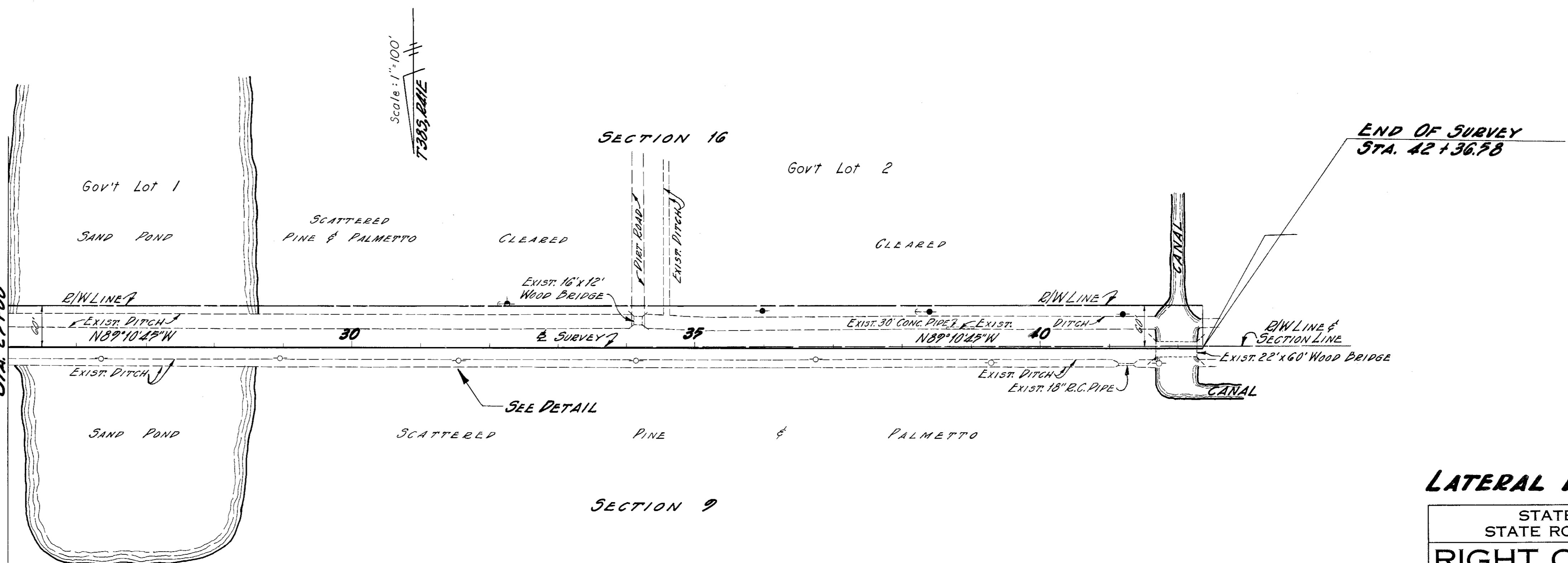
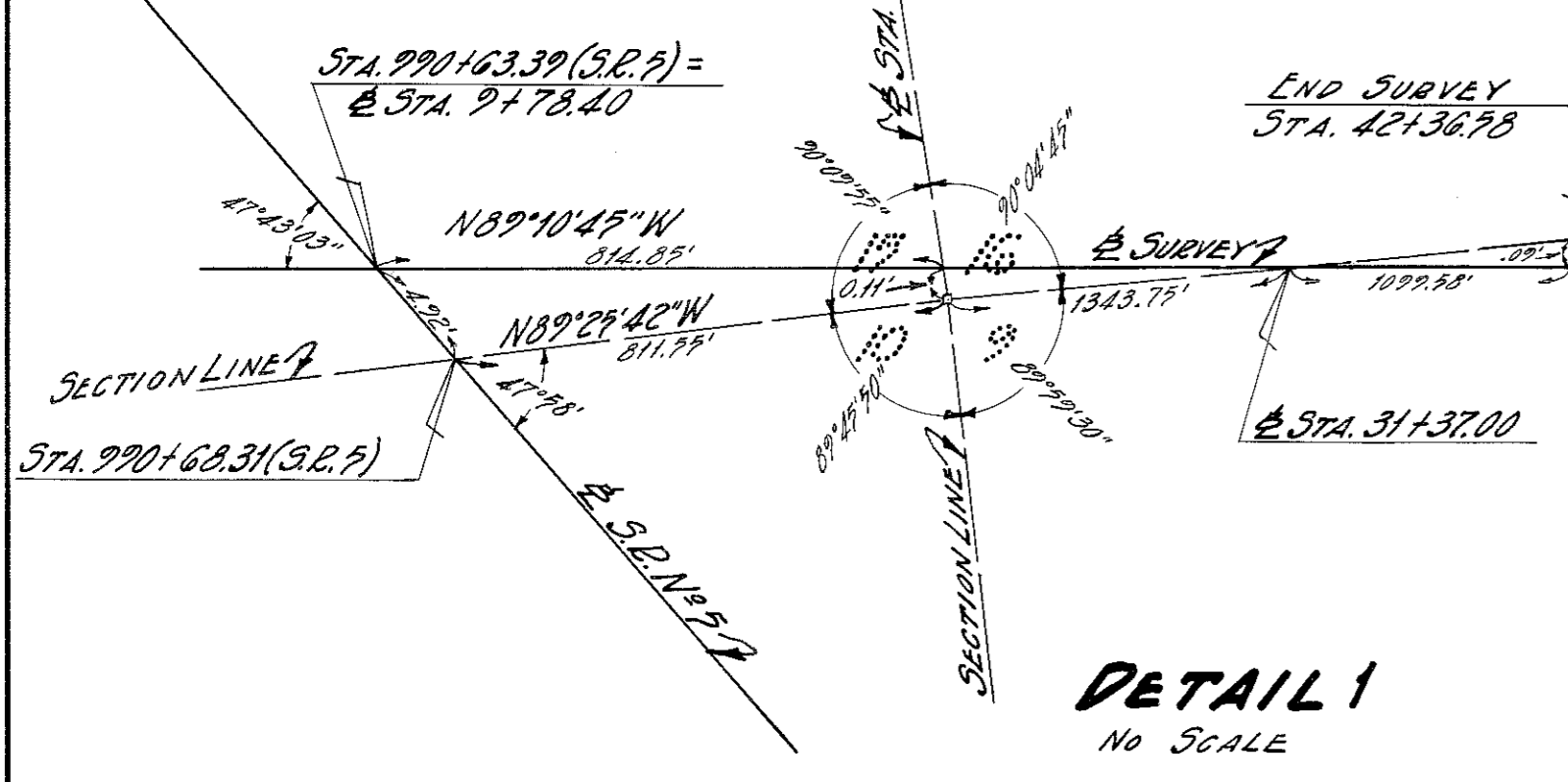
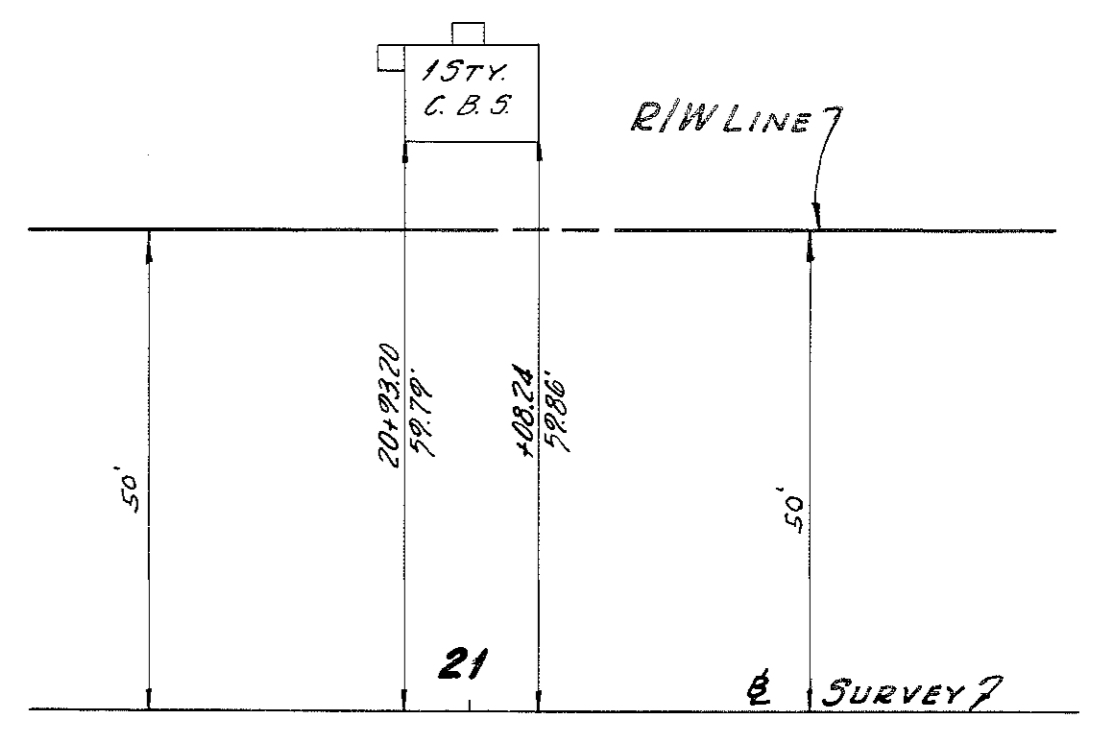
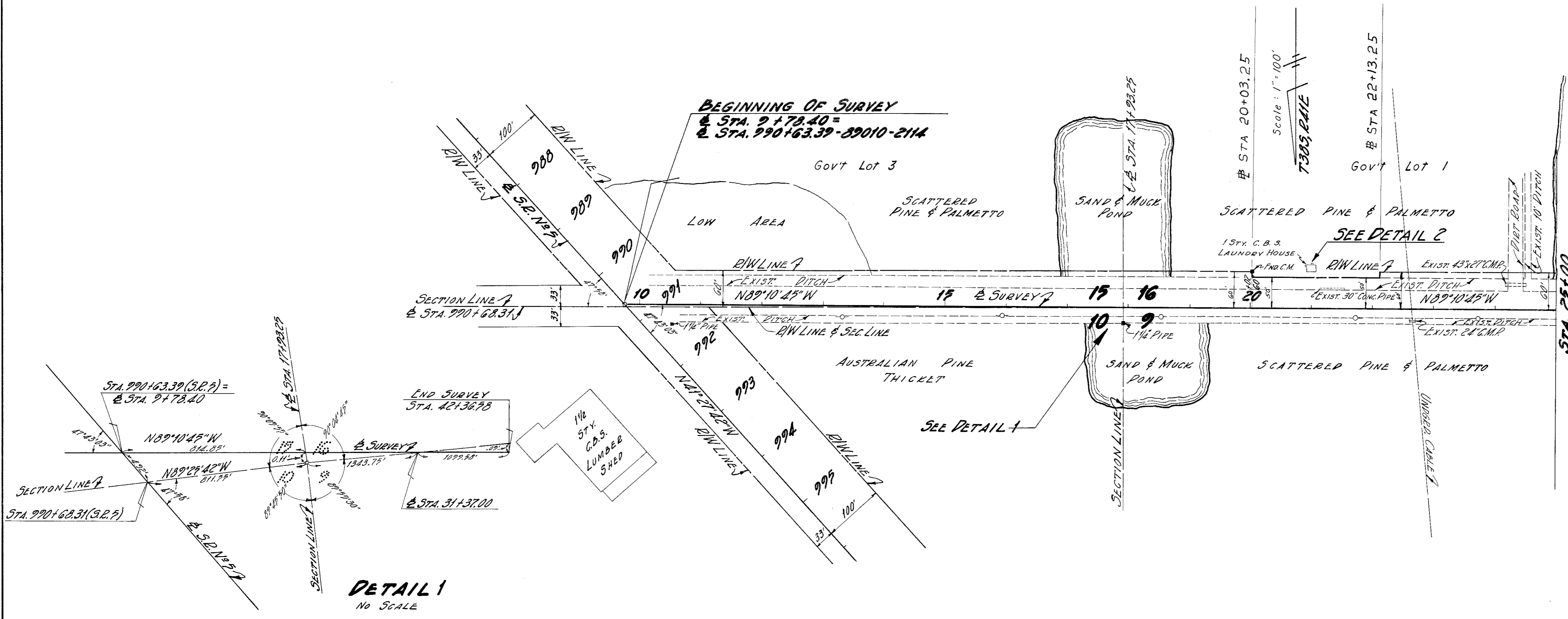
RIGHT OF WAY MAP

STATE ROAD NO. 5 MARTIN COUNTY

BY	DATE	APPROVED BY	DATE
DRAWN E.G.	2/62	<i>James E. Davidson</i>	
TRACED G.M.	2/62		
CHECKED			
COMPARED			
INDEXED			

No.	REVISION	BY	DATE

SECTION 89010-2114 SHEET 9 OF



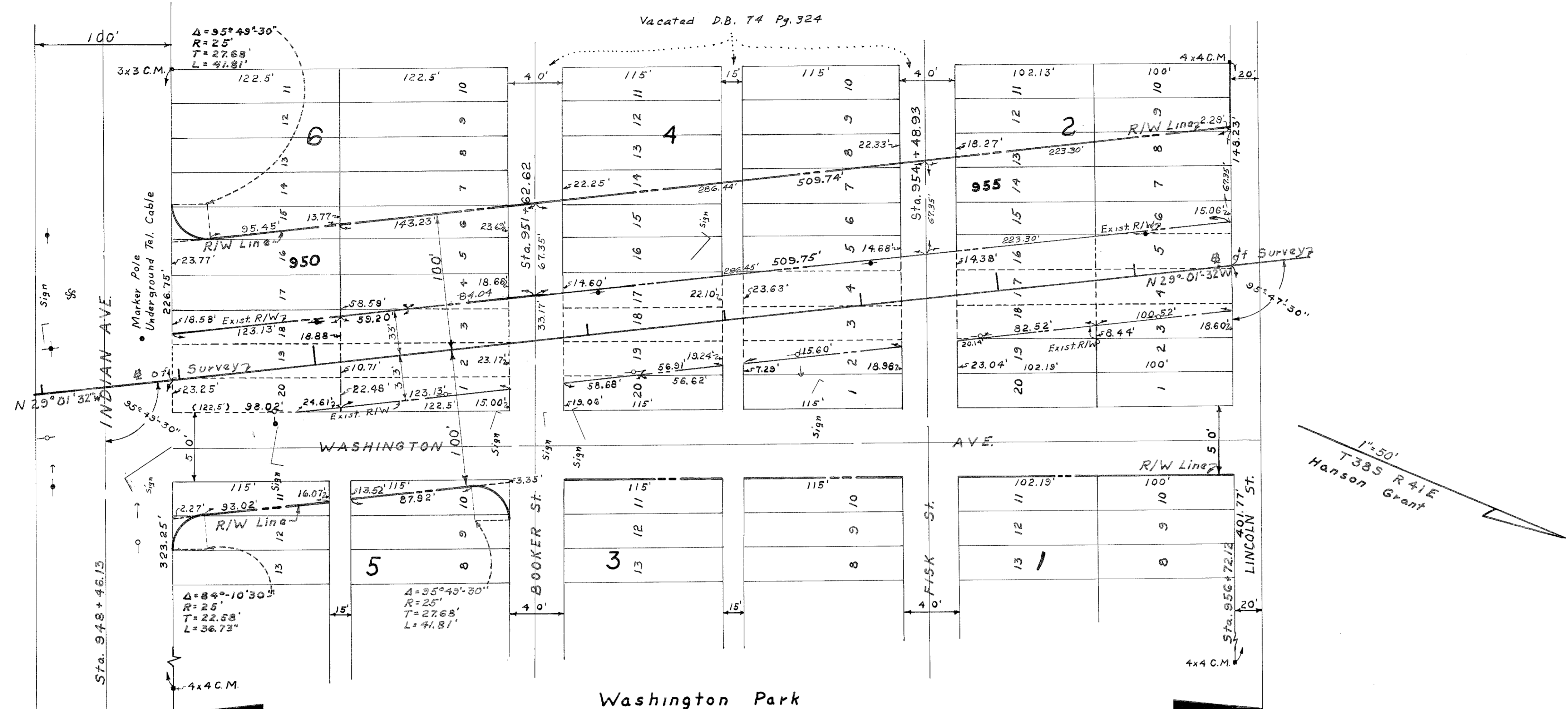
LATERAL DITCH N^o 7

STATE OF FLORIDA STATE ROAD DEPARTMENT			
RIGHT OF WAY MAP			
STATE ROAD No. 5		MARTIN COUNTY	
BY	DATE	APPROVED BY	DATE
L.P.	2/62	<i>James E. Davidson</i>	2-28-62
TRACED	G.U.M.	2/62	DISTRICT ENGINEER
CHECKED			7-3-62
COMPARED			ENGINEER OF RIGHTS OF WAY
INDEXED			STATE HIGHWAY ENGINEER

NO.	REVISION	BY	DATE

A. R. OSBORN, JACKSONVILLE

FED. ROAD DIV. No.	STATE	SEC. AND JOB No.	FISCAL YEAR	SHEET No.	TOTAL SHEETS
3	FLA.	89010-2114	57-58	5	



STATE OF FLORIDA
STATE ROAD DEPARTMENT

RIGHT OF WAY MAP

SECTION NO. 89010-2114
ROAD NO. 5 MARTIN COUNTY

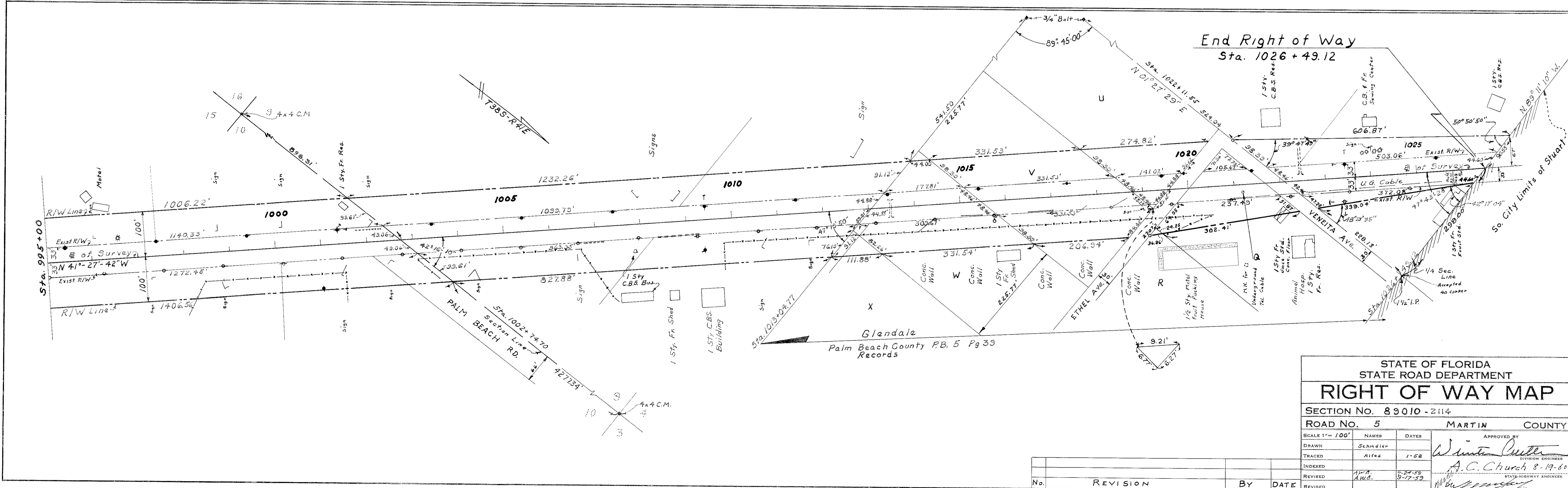
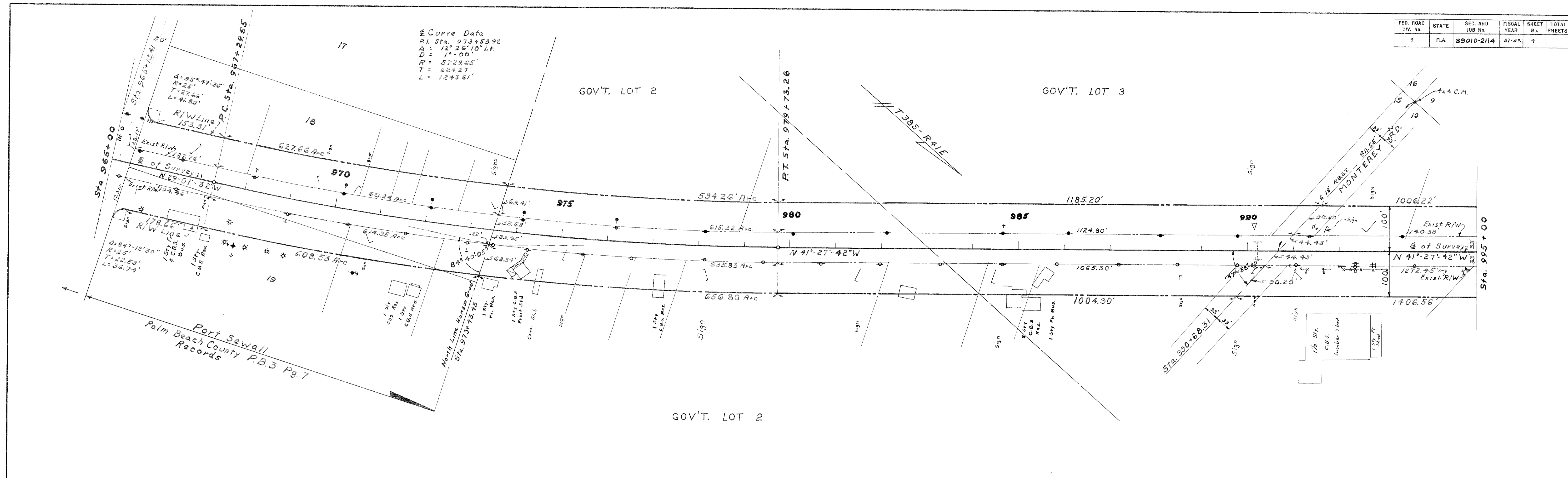
SCALE 1"=50'	NAMES	DATES	APPROVED BY
DRAWN	Schindler		<i>Winters Cuth</i> DIVISION ENGINEER
TRACED	Alfies	2-58	
INDEXED			
REVISED			

APPROVED BY: *A. C. Church* 8-19-60
STATE HIGHWAY ENGINEER

No.	REVISION	BY	DATE	REVISION

89010-2114 5 of 9

FED. ROAD DIV. No.	STATE	SEC. AND JOB No.	FISCAL YEAR	SHEET No.	TOTAL SHEETS
3	FLA.	89010-2114	57-58	4	7



STATE OF FLORIDA
STATE ROAD DEPARTMENT

RIGHT OF WAY MAP

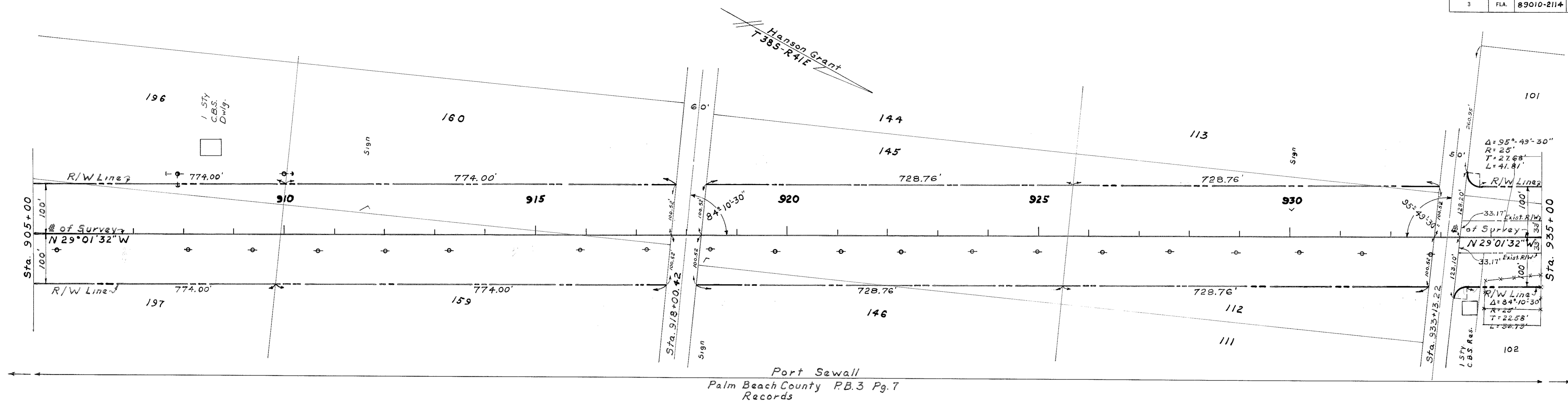
SECTION NO. 89010 - 2114
ROAD NO. 5 MARTIN COUNTY

SCALE 1" = 100'	NAME	DATE	APPROVED BY
DRAWN	Schneider		<i>W. J. Church</i> DISTRICT ENGINEER
TRACED	Alfex	1-58	
INDEXED			
REVISED	AMC	2-24-59	<i>A.C. Church</i> REGISTERED PROFESSIONAL ENGINEER
REVISED		5-17-59	

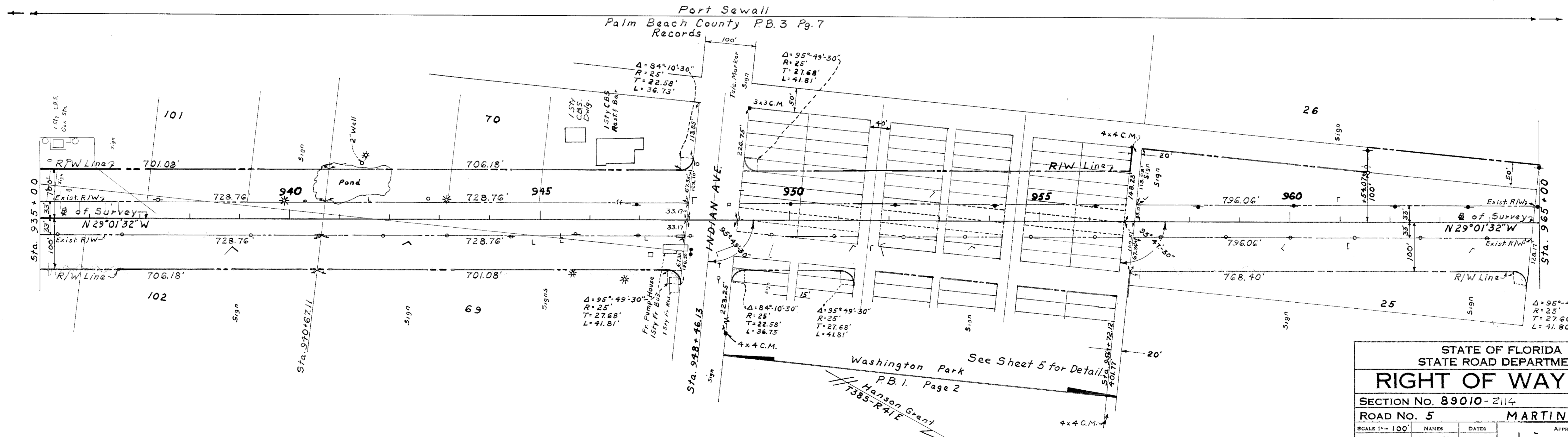
Eng. of R/W
89010-2114
4 of 7

No.	REVISION	BY	DATE

FED. ROAD DIV. No.	STATE	SEC. AND JOB No.	FISCAL YEAR	SHEET No.	TOTAL SHEETS
3	FLA.	89010-2114	57-58	3	



Port Sewall
Palm Beach County P.B.3 Pg.7
Records



Port Sewall
Palm Beach County P.B.3 Pg.7
Records

Washington Park
P.B.1 Page 2
Hanson Grant
7385-RAIE

STATE OF FLORIDA
STATE ROAD DEPARTMENT

RIGHT OF WAY MAP

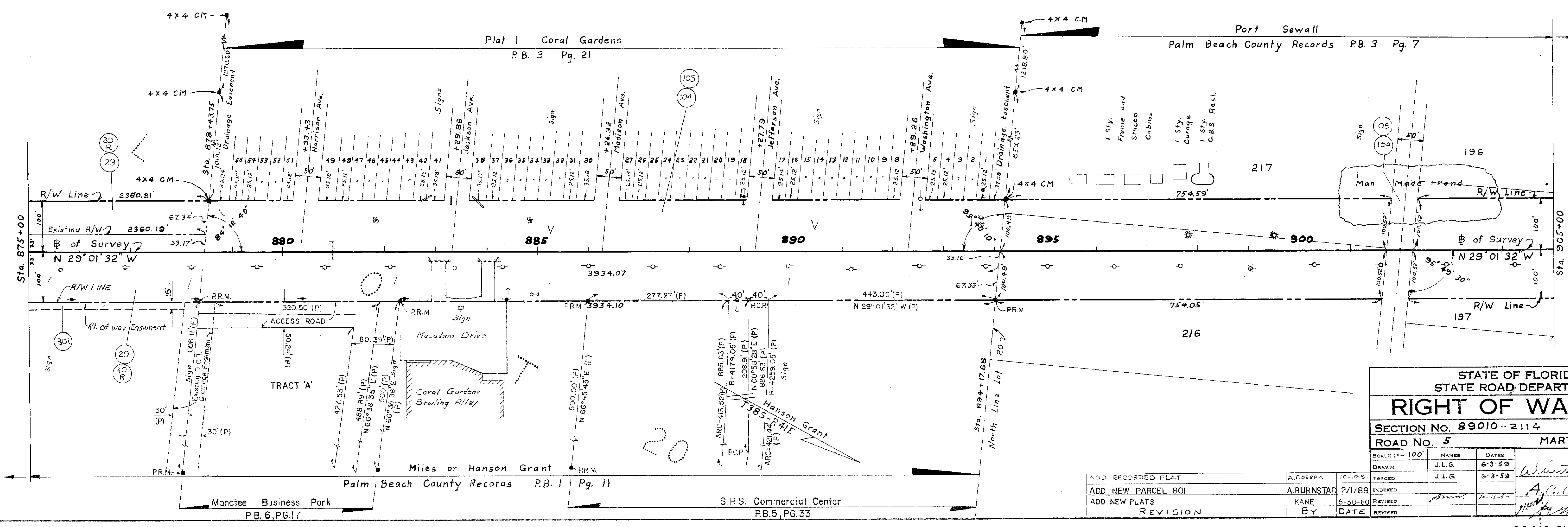
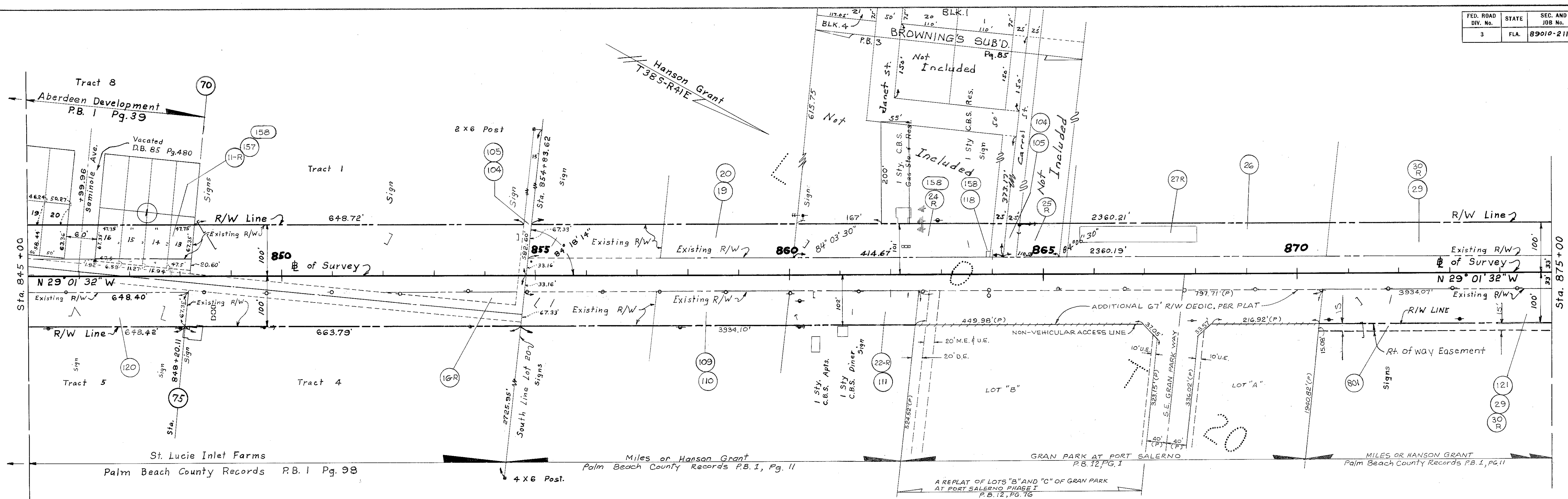
SECTION No. 89010-2114
ROAD No. 5 MARTIN COUNTY

SCALE 1"= 100'	NAMES	DATES
DRAWN	Schindler	
TRACED	ALFES	1-58
INDEXED		
REVISED		
REVISED		

APPROVED BY
Winters Custer
DIVISION ENGINEER

A.C. Church 5-14-60
STATE HIGHWAY ENGINEER

No.	REVISION	BY	DATE

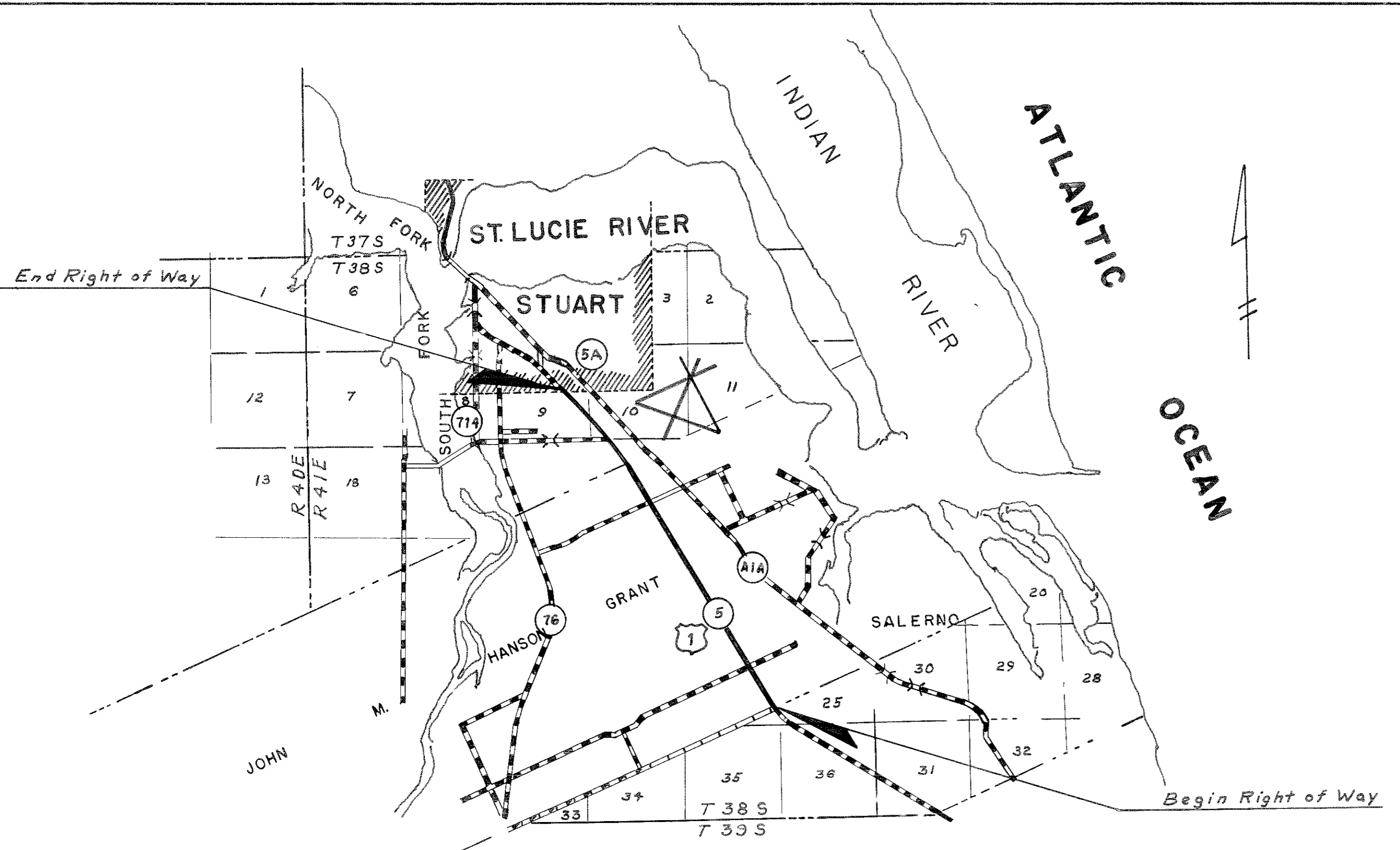


**STATE OF FLORIDA
STATE ROAD DEPARTMENT
RIGHT OF WAY MAP**

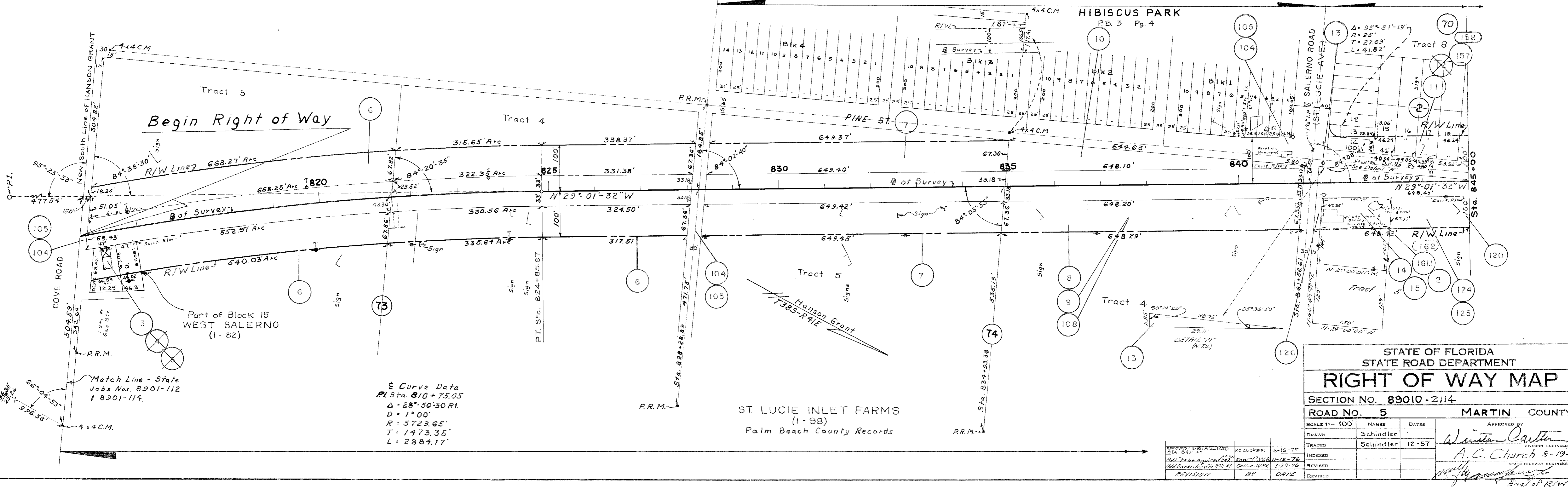
SECTION No. 89010-2114
ROAD No. 5 MARTIN COUNTY

SCALE 1"=100'	NAMES	DATE	APPROVED BY
DRAWN	J.L.G.	6-3-59	<i>Winton Carter</i> DIVISION ENGINEER
TRACED	J.L.G.	6-3-59	
ADD NEW PARCEL 801	A.BURNSTAD	2/1/89	<i>A.C. Church</i> STATE HIGHWAY ENGINEER
ADD NEW PLATS	KANE	5-30-80	
REVISION	BY	DATE	REVISOR

89010-2114
Eng. of R/W
2 of 9



MARTIN COUNTY
LOCATION SKETCH
SCALE 1" = 1 MILE



Curve Data
 P.I. Sta. 810 + 75.05
 $\Delta = 28^\circ - 50' - 30''$ Rt.
 $D = 1^\circ 00'$
 $R = 5729.65'$
 $T = 1473.35'$
 $L = 2889.17'$

STATE OF FLORIDA
 STATE ROAD DEPARTMENT
RIGHT OF WAY MAP
 SECTION No. 89010-2114
 ROAD No. 5 MARTIN COUNTY

SCALE 1" = 100'	NAME	DATE
DRAWN	Schindler	
TRACED	Schindler	12-57
INDEXED		
REVISED		
REVISION	BY	DATE

APPROVED BY
Winton Carter
 DIVISION ENGINEER
A.C. Church
 STATE HIGHWAY ENGINEER
 Eng'g of R/W