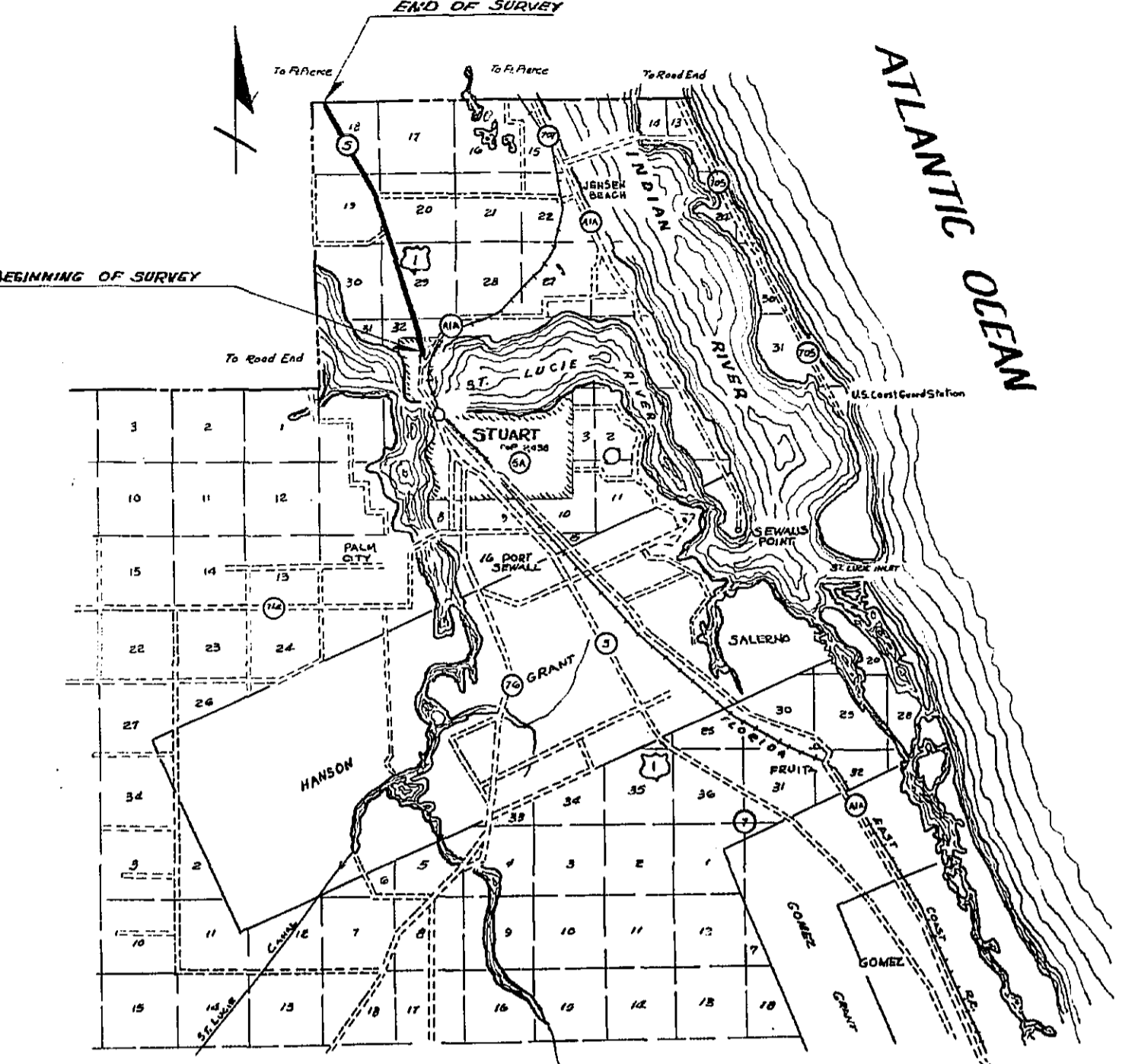
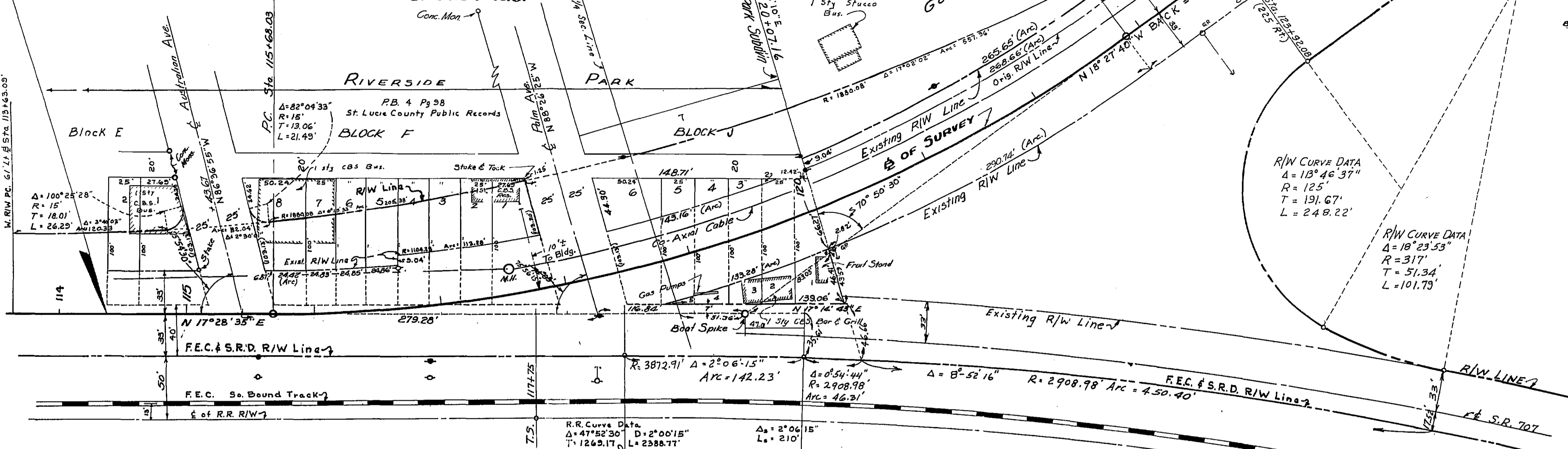
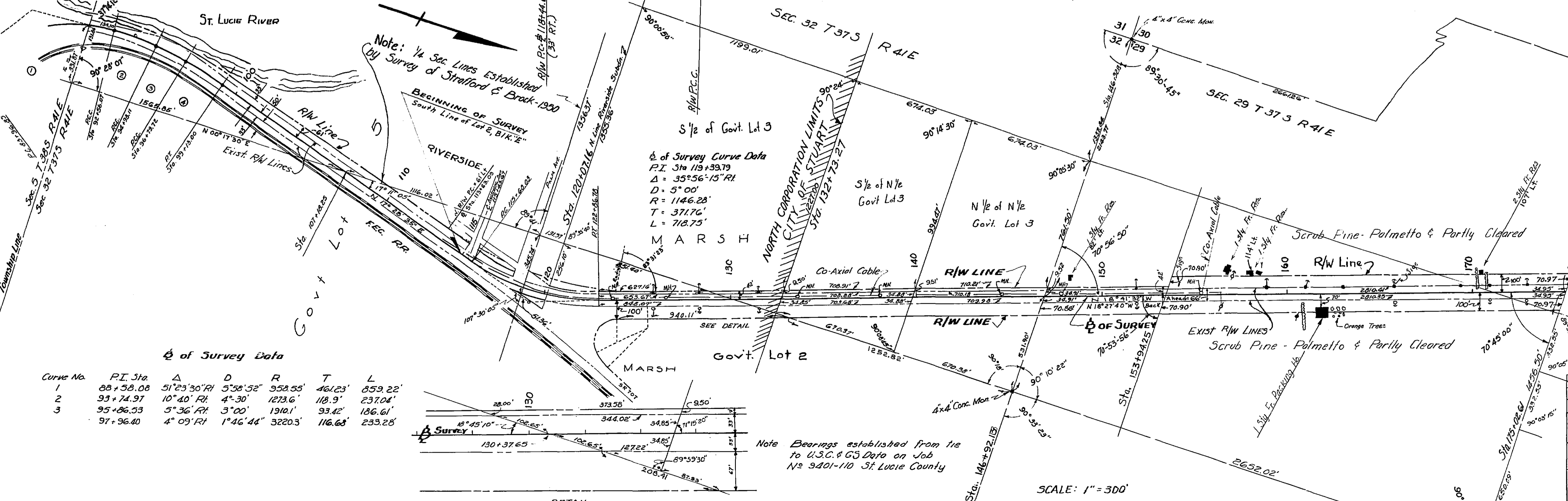


Scale 1"=50'

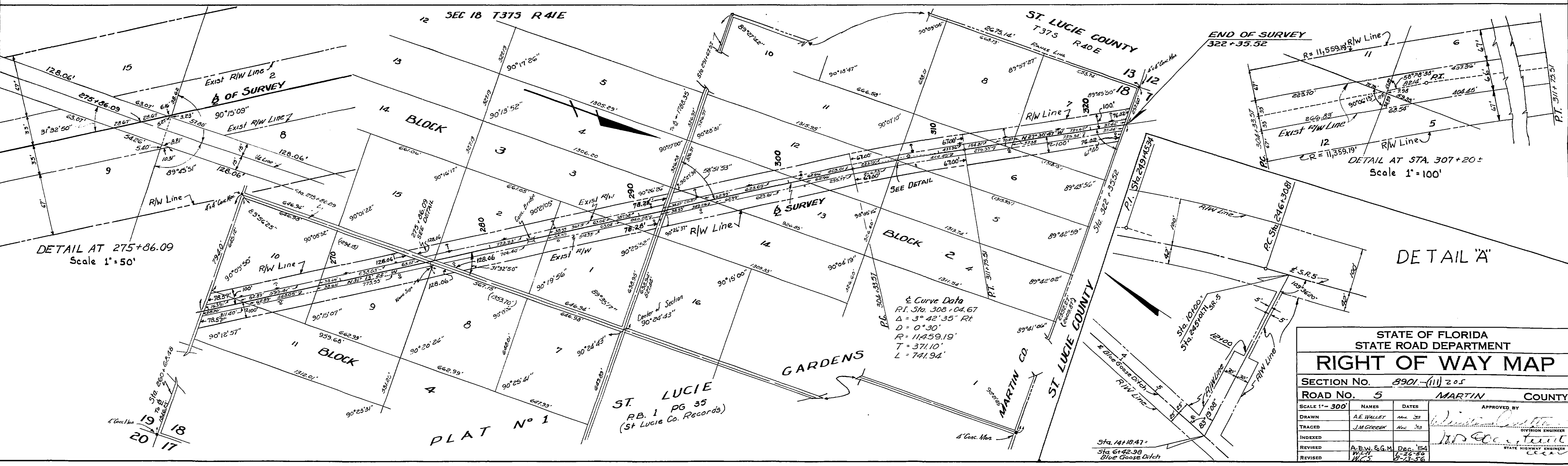
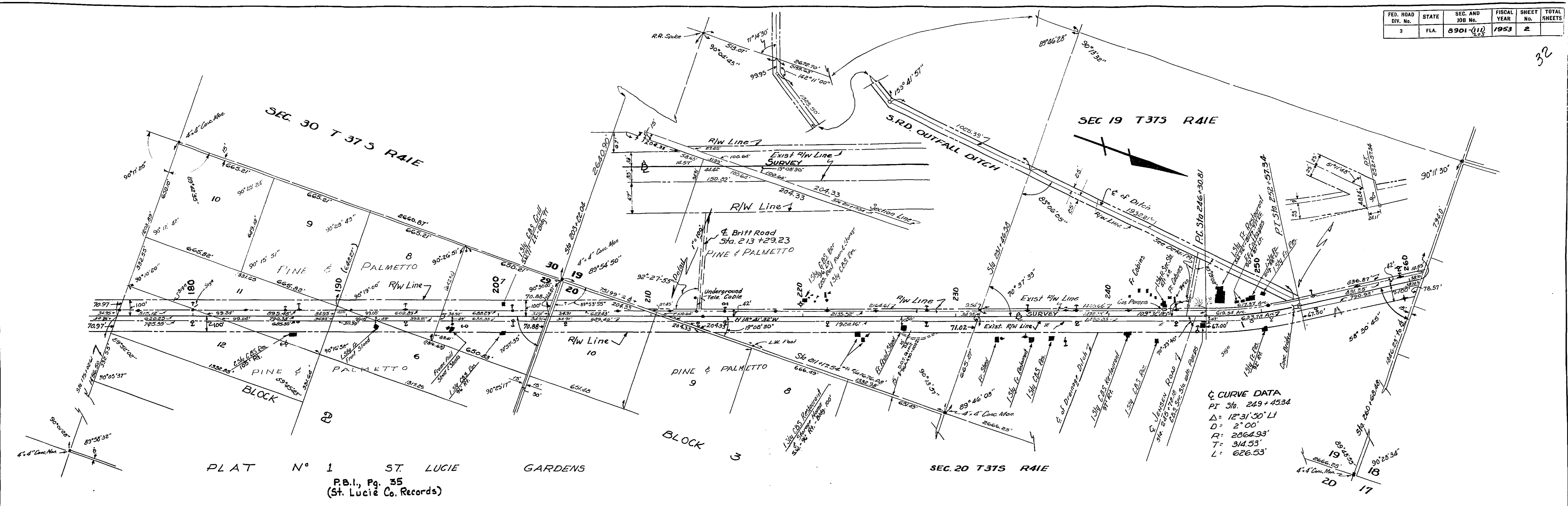
Begin Survey Job 2205 (2111) = South Line of Lot 2, Block F



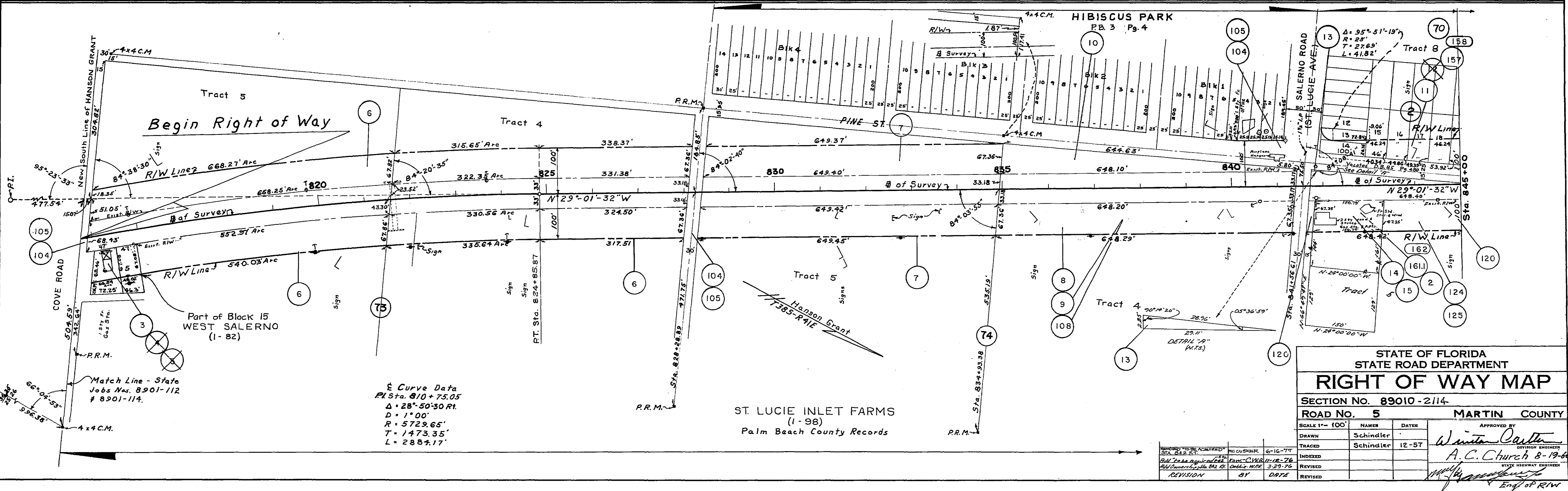
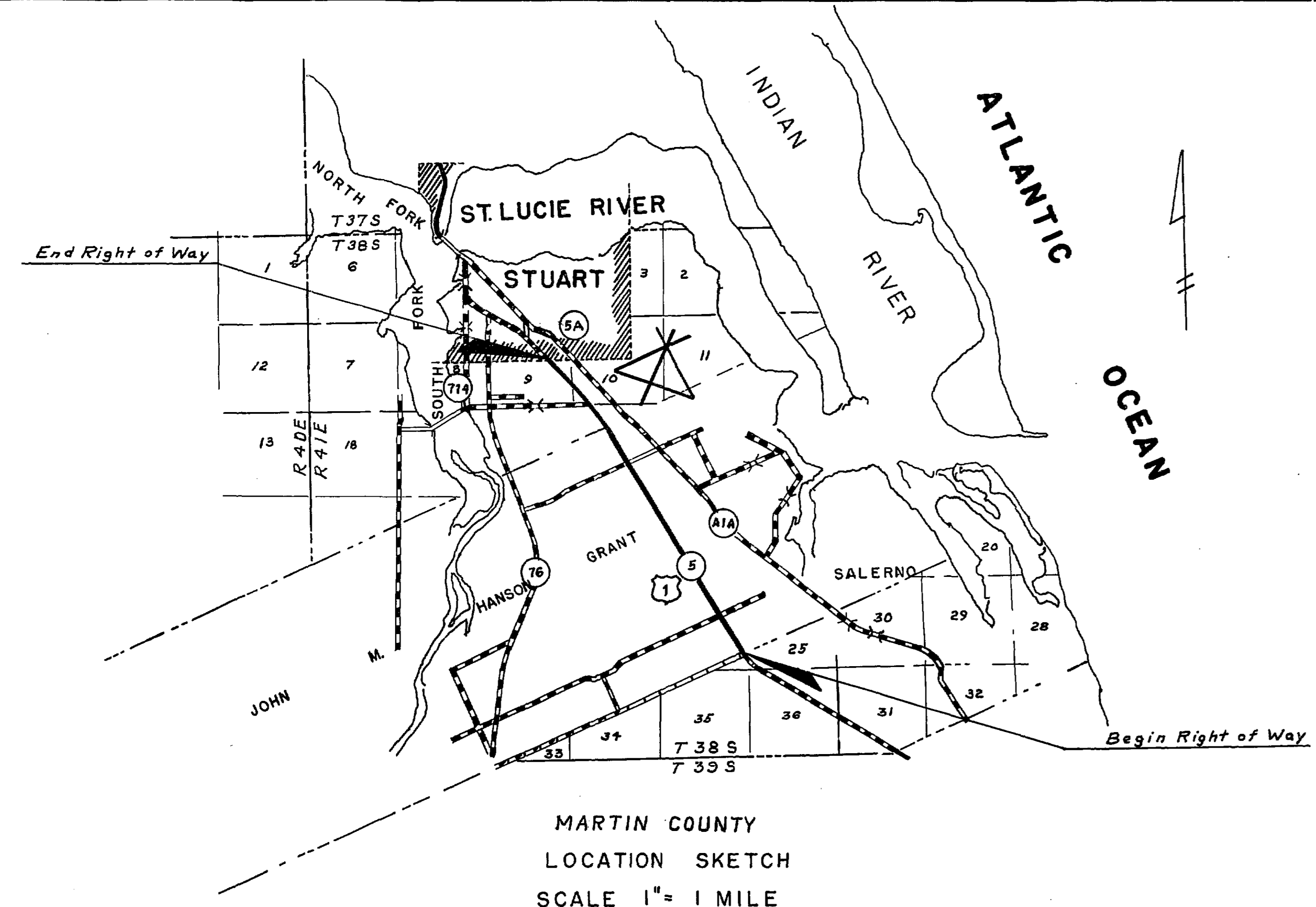
KEY MAP
Scale: 1"=2 Miles



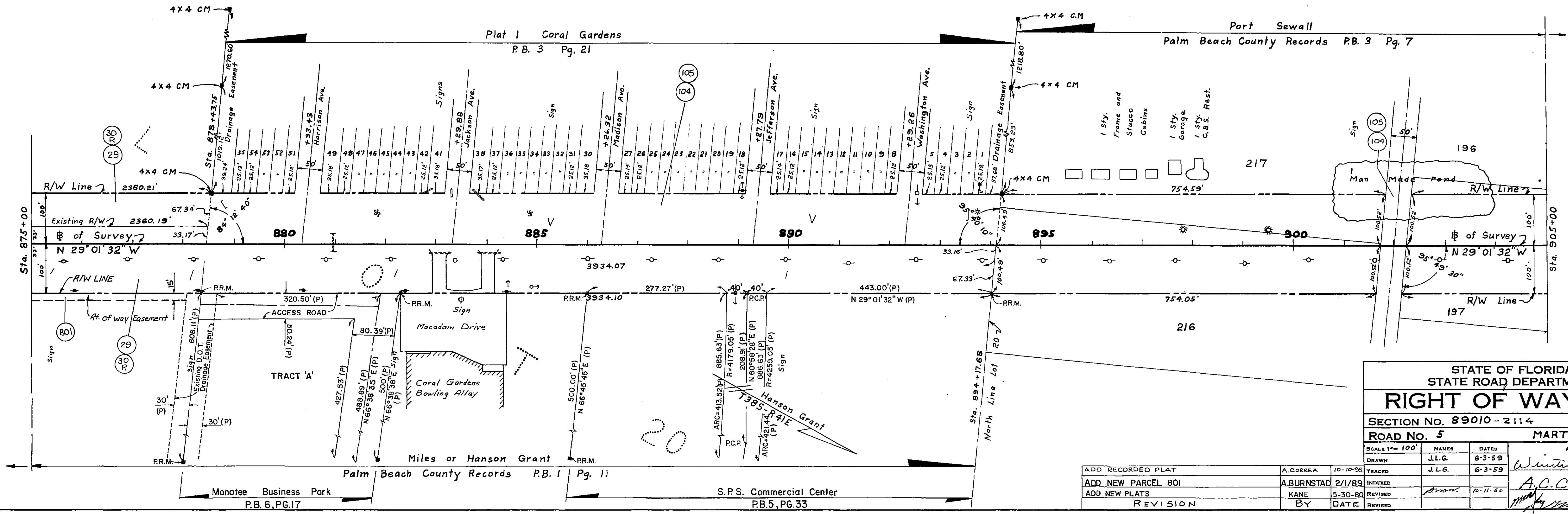
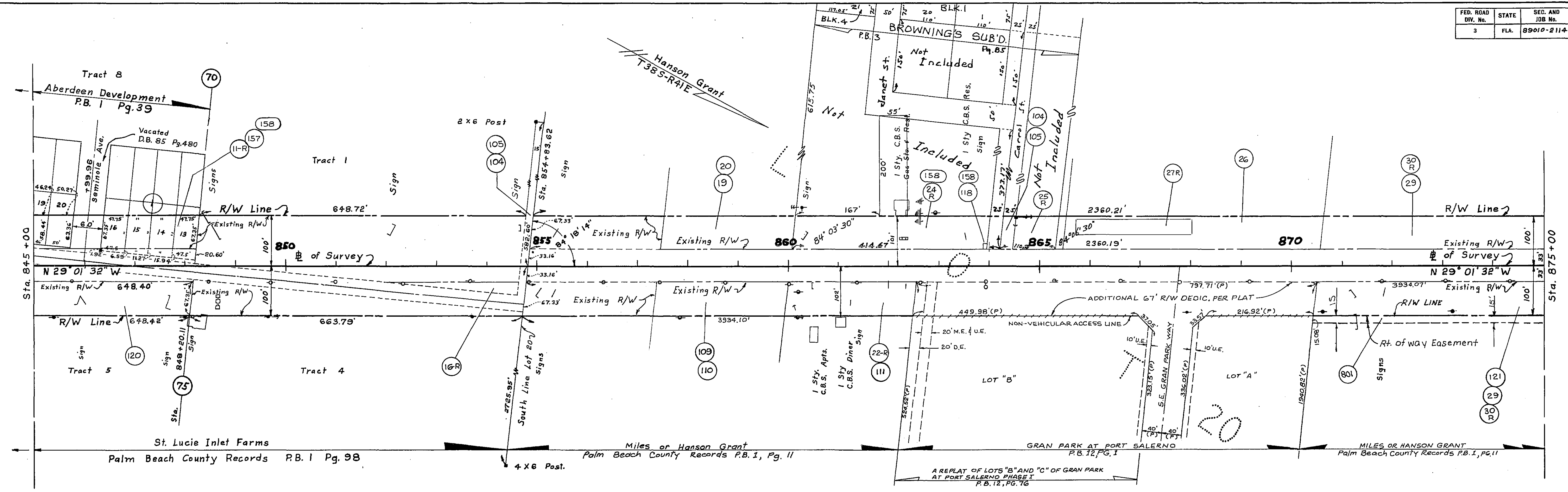
2	REVISED F.E.C. R/W INTERSECTION R/W LINES	R.W.G	12-31-62
1	R/W Lines of Intersection of SR 5 & T 07	Alfies	4-22-60
No.	Revision	By	Date
STATE OF FLORIDA STATE ROAD DEPARTMENT			
RIGHT OF WAY MAP			
SECTION NO. 8901-(11) 205, 225			
ROAD NO. 5 MARTIN COUNTY			
SCALE 1"=50 Feet	NAMES	DATES	APPROVED BY
DRAWN	A.E. WALLET	Nov. '53	[Signature]
TRACED	J.M. GEORGE	Nov. '53	
INDEXED			
REVISED	A.E.W. & G.M.	Dec. '54	
REVISED	H.Z.A.	8-23-57	



STATE OF FLORIDA STATE ROAD DEPARTMENT		
RIGHT OF WAY MAP		
SECTION No. 8901-(11) 205		
ROAD No. 5 MARTIN COUNTY		
SCALE 1"=300'	NAMES	DATES
DRAWN	A.E. WILLET	Nov. 53
TRACED	J.M. GREEN	Nov. 53
INDEXED		
REVISED	A.E.W. & G.M.	Dec. 54
REVISED	W.L.H.	6-26-59
REVISED	W.L.H.	9-13-56
APPROVED BY		
<i>[Signature]</i>		
DIVISION ENGINEER		
<i>[Signature]</i>		
STATE HIGHWAY ENGINEER		



FED. ROAD DIV. No.	STATE	SEC. AND JOB No.	FISCAL YEAR	SHEET No.	TOTAL SHEETS
3	FLA.	89010-2114	57-58	2	



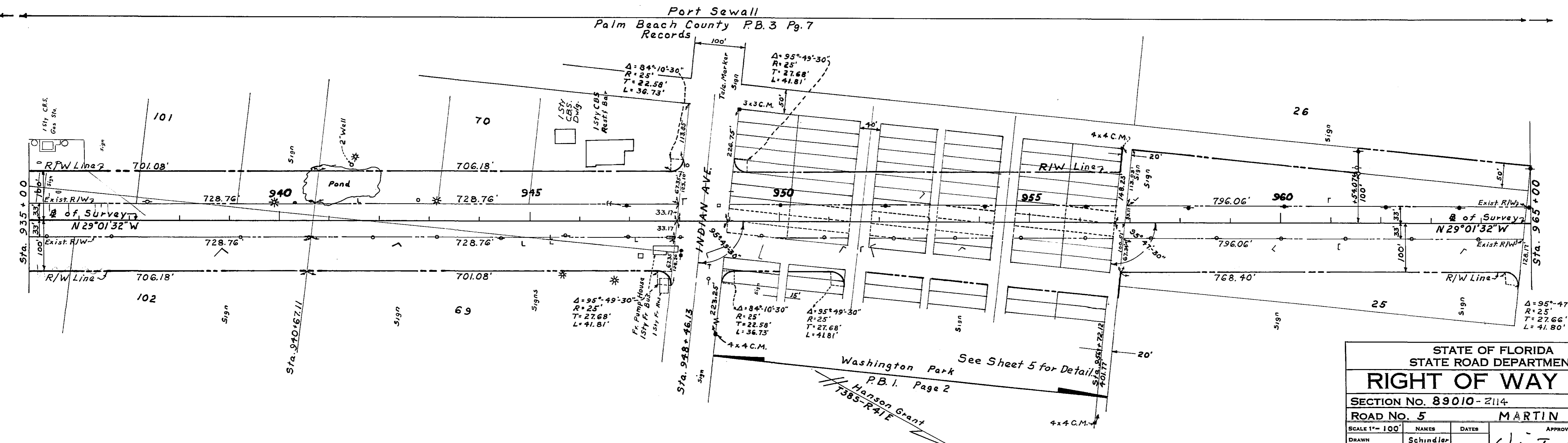
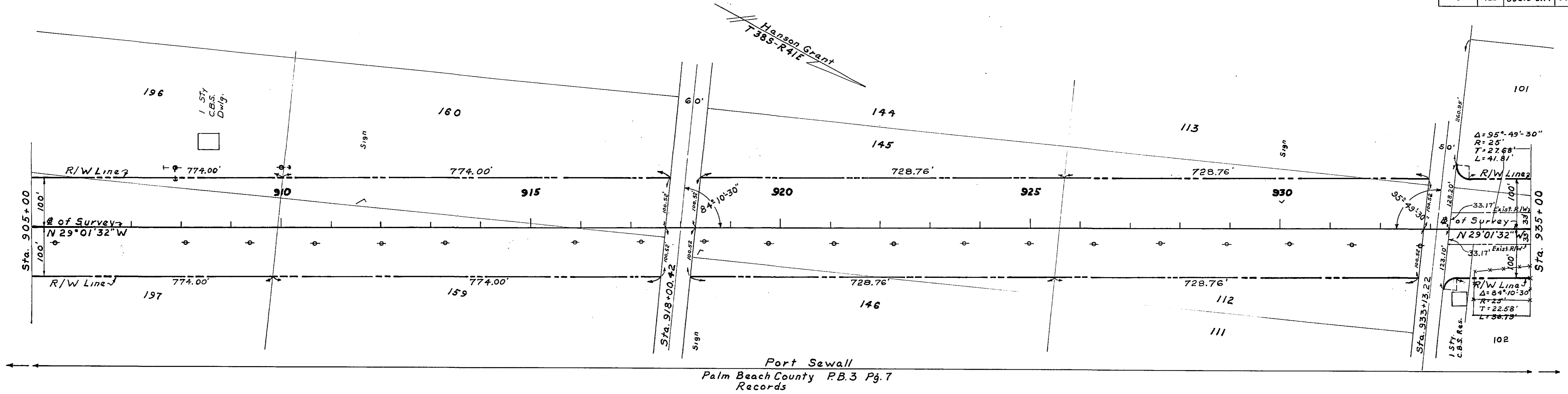
**STATE OF FLORIDA
STATE ROAD DEPARTMENT**

RIGHT OF WAY MAP

SECTION No. 89010-2114
ROAD No. 5 MARTIN COUNTY

SCALE 1" = 100'	NAMES	DATE	APPROVED BY
DRAWN	J.L.G.	6-3-59	<i>Winton Carter</i> DIVISION ENGINEER
TRACED	J.L.G.	6-3-59	
ADD RECORDED PLAT	A. CORREA	10-10-95	<i>A.C. Church</i> STATE HIGHWAY ENGINEER
ADD NEW PARCEL 801	A. BURNSTAD	2/1/89	
ADD NEW PLATS	KANE	5-30-80	
REVISION	BY	DATE	REVISED

89010-2114 2 of 9



STATE OF FLORIDA
STATE ROAD DEPARTMENT

RIGHT OF WAY MAP

SECTION No. 89010-2114
ROAD NO. 5 MARTIN COUNTY

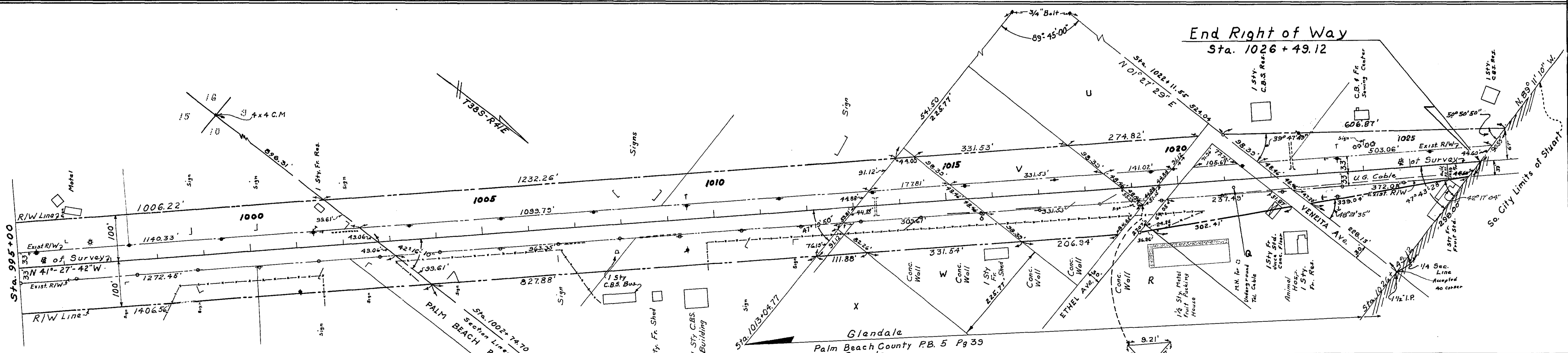
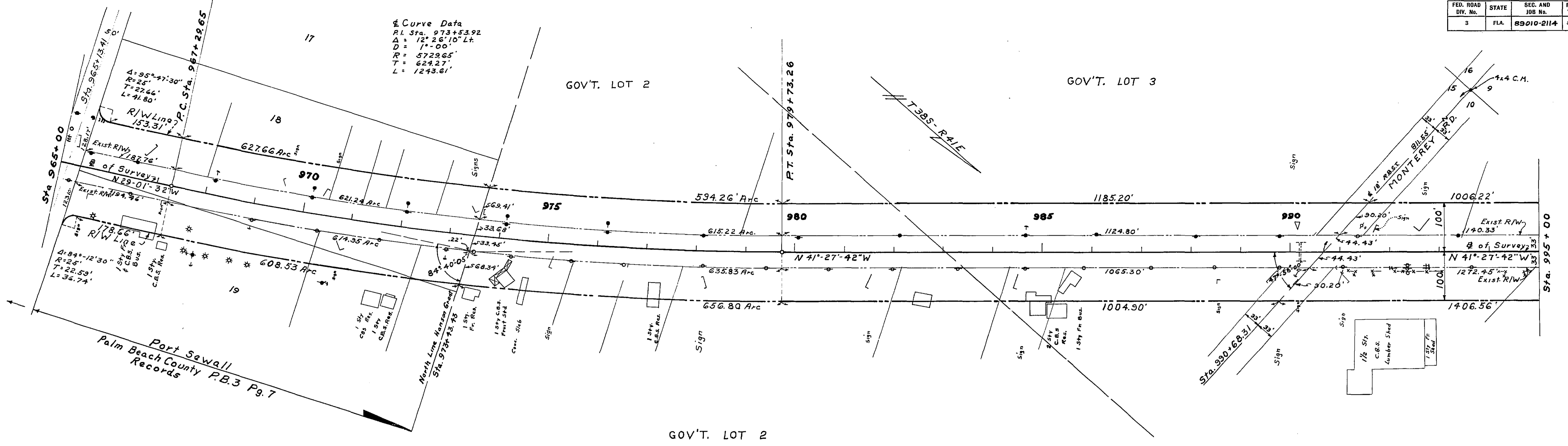
SCALE 1" = 100'	NAMES	DATES	APPROVED BY
DRAWN	Schindler		<i>W. C. Church</i> DIVISION ENGINEER
TRACED	ALFES	1-58	
INDEXED			
REVISED	ARC.	7-27-59	

APPROVED BY: *W. C. Church* 8-14-60
STATE HIGHWAY ENGINEER

No.	REVISION	By	DATE

FED. ROAD DIV. No.	STATE	SEC. AND JOB No.	FISCAL YEAR	SHEET No.	TOTAL SHEETS
3	FLA.	89010-2114	87-88	4	7

Curve Data
 P.I. Sta. 973+53.92
 $\Delta = 12^{\circ} 26' 10''$ Lt.
 $D = 17.00'$
 $R = 572.65'$
 $T = 624.27'$
 $L = 1243.61'$



STATE OF FLORIDA
 STATE ROAD DEPARTMENT
RIGHT OF WAY MAP
 SECTION No. 89010-2114
 ROAD No. 5 MARTIN COUNTY

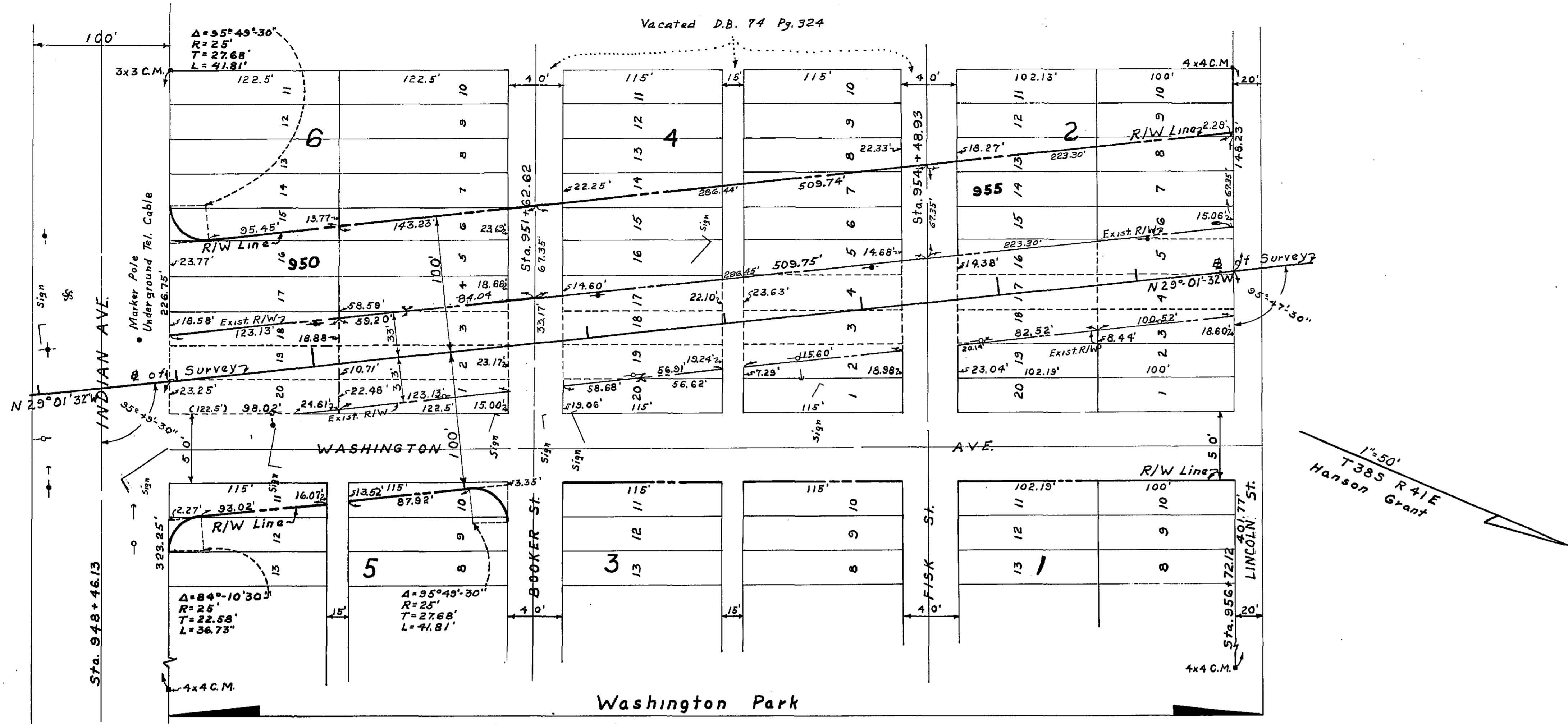
SCALE 1" = 100'	NAMES	DATES	APPROVED BY
DRAWN	Schmidler		<i>Winters Custer</i> DIVISION ENGINEER
TRACED	Alfex	1-58	
INDEXED			
REVISED	1st A. AME.	2-24-59 5-7-59	
REVISED			

A.C. Church 8-19-60
 STATE HIGHWAY ENGINEER

89010-2114
 Eng. of R/W
 4 of 9

No.	REVISION	BY	DATE

FED. ROAD DIV. No.	STATE	SEC. AND JOB No.	FISCAL YEAR	SHEET No.	TOTAL SHEETS
8	FLA.	89010-2114	57-58	5	



NOTE: All Lots 25' Frontage P. B. 1 Pg. 2

1"=50'
T385 R41E
Hanson Grant

STATE OF FLORIDA
STATE ROAD DEPARTMENT

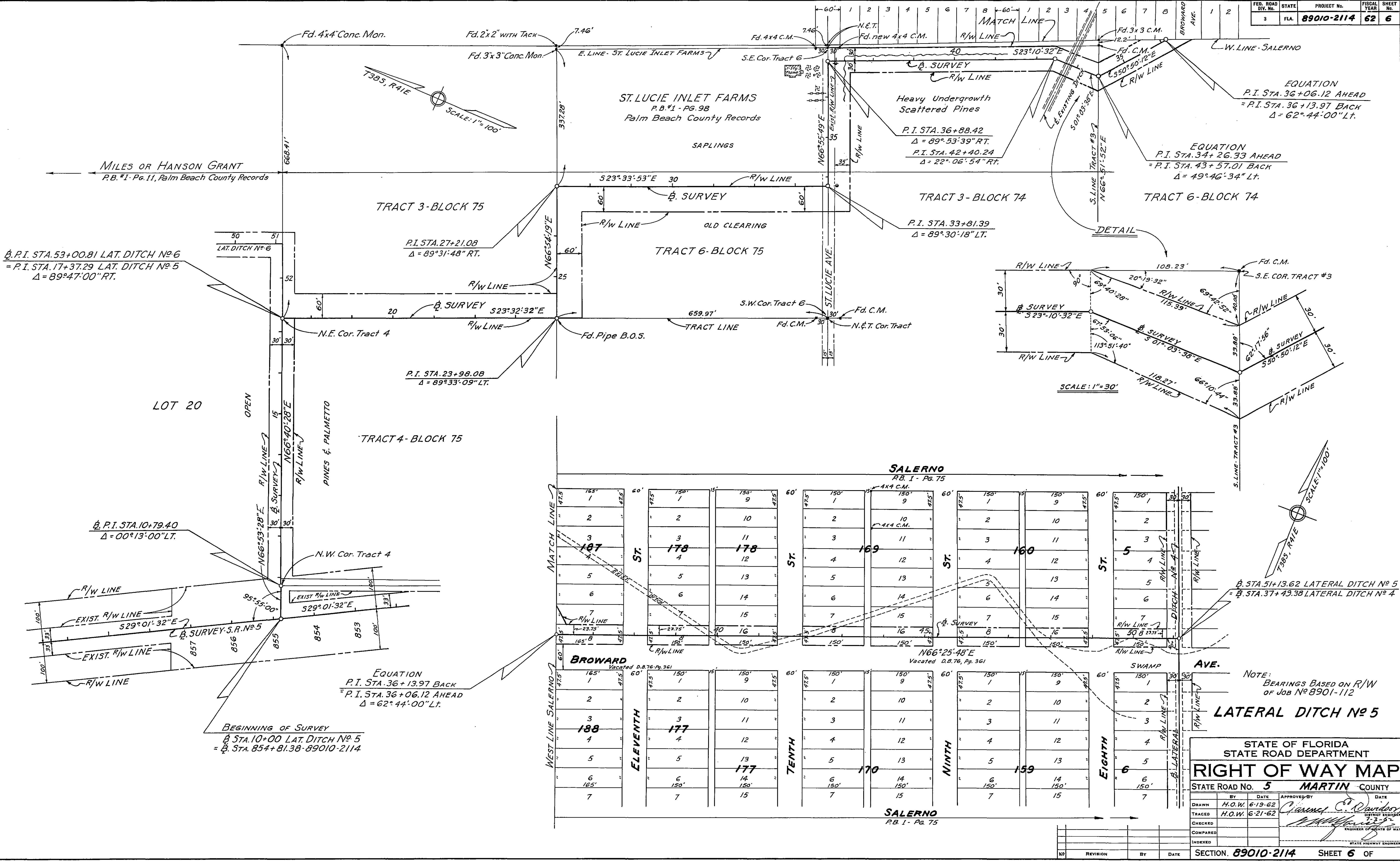
RIGHT OF WAY MAP

SECTION NO. 89010-2114
ROAD NO. 5 MARTIN COUNTY

SCALE 1"=50'	NAMES	DATES	APPROVED BY
DRAWN	Schindler		<i>Winters</i> DIVISION ENGINEER
TRACED	Alfas	2-58	
INDEXED			<i>A. C. Church</i> STATE HIGHWAY ENGINEER
REVISED	A.W.B.	2-24-59 3-23-60	
REVISED			

No. REVISION BY DATE

89010-2114 5 of 9



EQUATION
 P.I. STA. 36+06.12 AHEAD
 = P.I. STA. 36+13.97 BACK
 $\Delta = 62^\circ 44' 00''$ LT.

EQUATION
 P.I. STA. 34+26.33 AHEAD
 = P.I. STA. 43+57.01 BACK
 $\Delta = 49^\circ 46' 34''$ LT.

P.I. STA. 36+88.42
 $\Delta = 89^\circ 53' 39''$ RT.
 P.I. STA. 42+40.24
 $\Delta = 22^\circ 06' 54''$ RT.

P.I. STA. 33+81.39
 $\Delta = 89^\circ 30' 18''$ LT.

P.I. STA. 27+21.08
 $\Delta = 89^\circ 31' 48''$ RT.

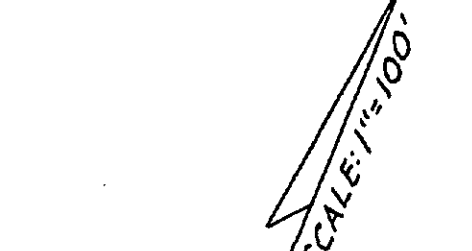
P.I. STA. 23+98.08
 $\Delta = 89^\circ 33' 09''$ LT.

B. P.I. STA. 53+00.81 LAT. DITCH No 6
 = P.I. STA. 17+37.29 LAT. DITCH No 5
 $\Delta = 89^\circ 47' 00''$ RT.

B. P.I. STA. 10+79.40
 $\Delta = 00^\circ 13' 00''$ LT.

EQUATION
 P.I. STA. 36+13.97 BACK
 = P.I. STA. 36+06.12 AHEAD
 $\Delta = 62^\circ 44' 00''$ LT.

BEGINNING OF SURVEY
 B. STA. 10+00 LAT. DITCH No 5
 = B. STA. 854+81.38-89010-2114



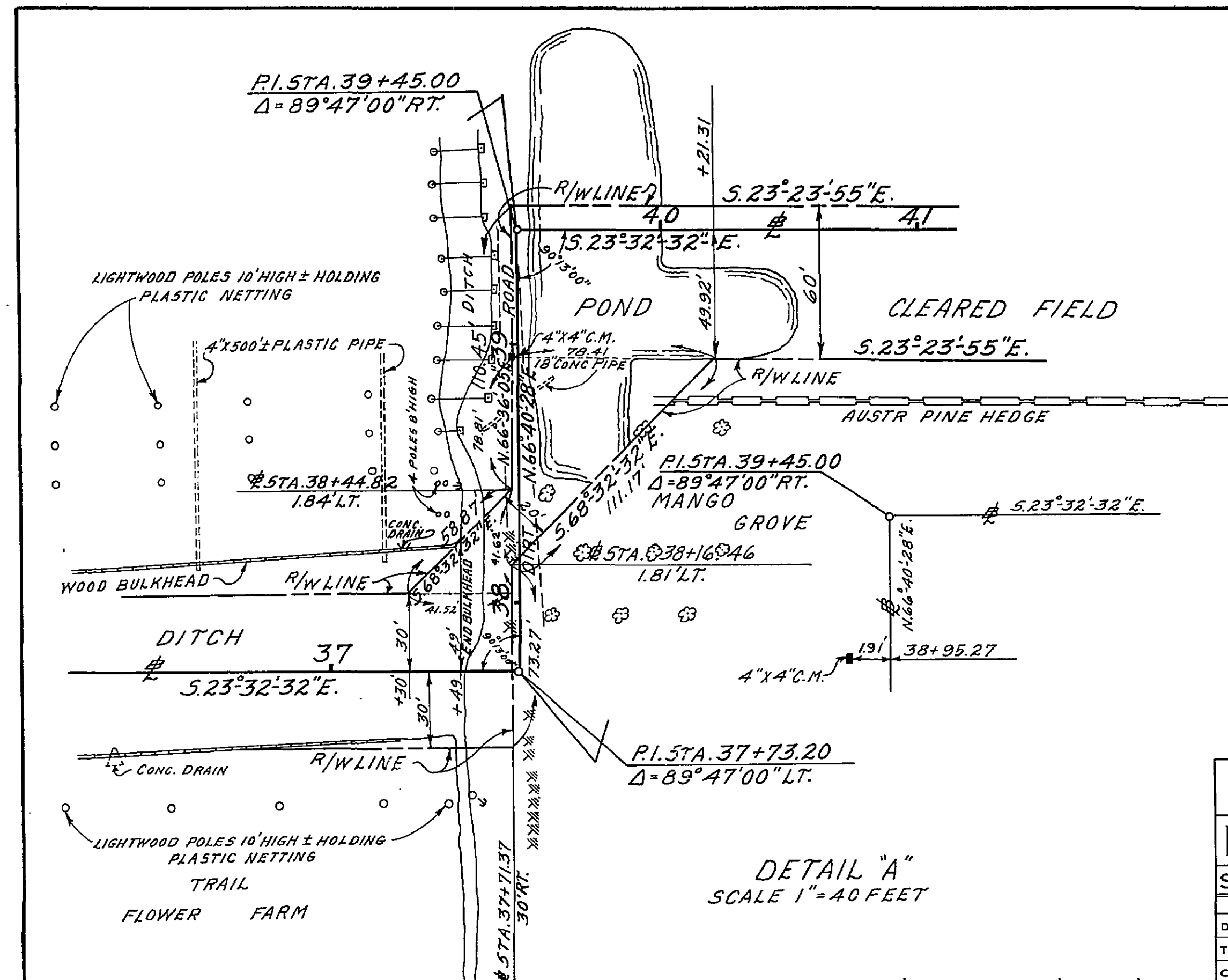
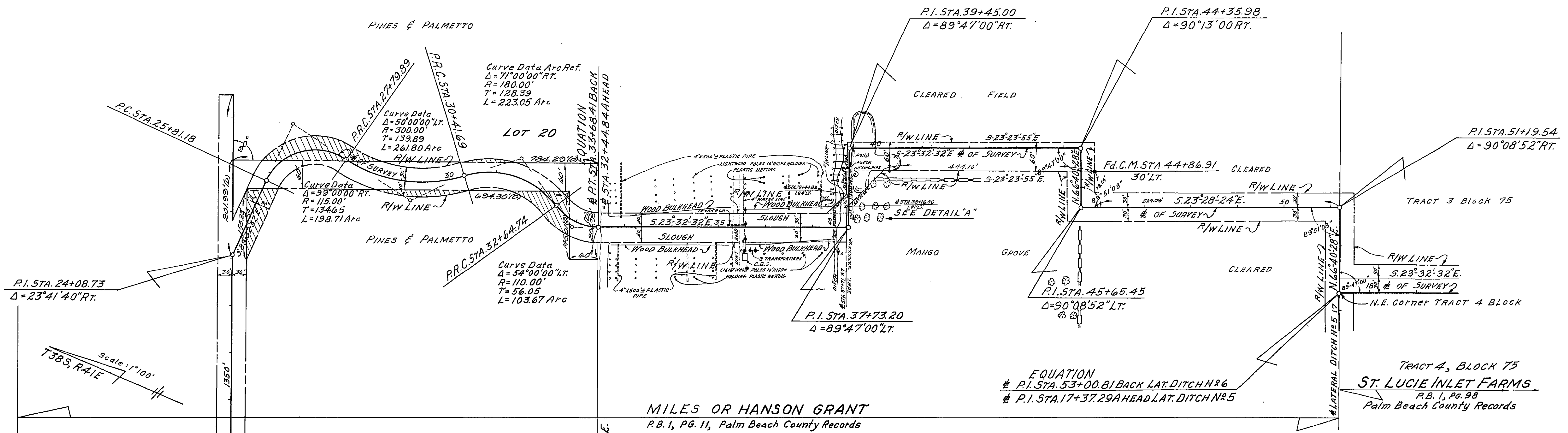
B. STA. 51+13.62 LATERAL DITCH No 5
 = B. STA. 37+43.38 LATERAL DITCH No 4

NOTE:
 BEARINGS BASED ON R/W
 OF JOB No 8901-112

LATERAL DITCH No 5

STATE OF FLORIDA STATE ROAD DEPARTMENT			
RIGHT OF WAY MAP			
STATE ROAD No. 5		MARTIN COUNTY	
BY	DATE	APPROVED BY	DATE
DRAWN	H.O.W. 6-13-62	Clarence C. Randon	DATE
TRACED	H.O.W. 6-21-62		
CHECKED			
COMPARED			
INDEXED		ENGINEER OF RIGHTS OF WAY	
SECTION. 89010-2114 SHEET 6 OF			

NO.	REVISION	BY	DATE



LATERAL DITCH N°6

STATE OF FLORIDA STATE ROAD DEPARTMENT			
RIGHT OF WAY MAP			
STATE ROAD No. 5		MARTIN COUNTY	
DRAWN	BY	DATE	APPROVED BY
TRACED	E. W. R.	4-17-62	<i>James C. Davidson</i>
CHECKED	E. W. R.	4-20-62	<i>W. J. ...</i>
COMPARED			
INDEXED			
SECTION. 89010-2114		SHEET 7 OF	

Rev. Ditch	Rev. St. MLD	10-23-80
REVISION	BY	DATE

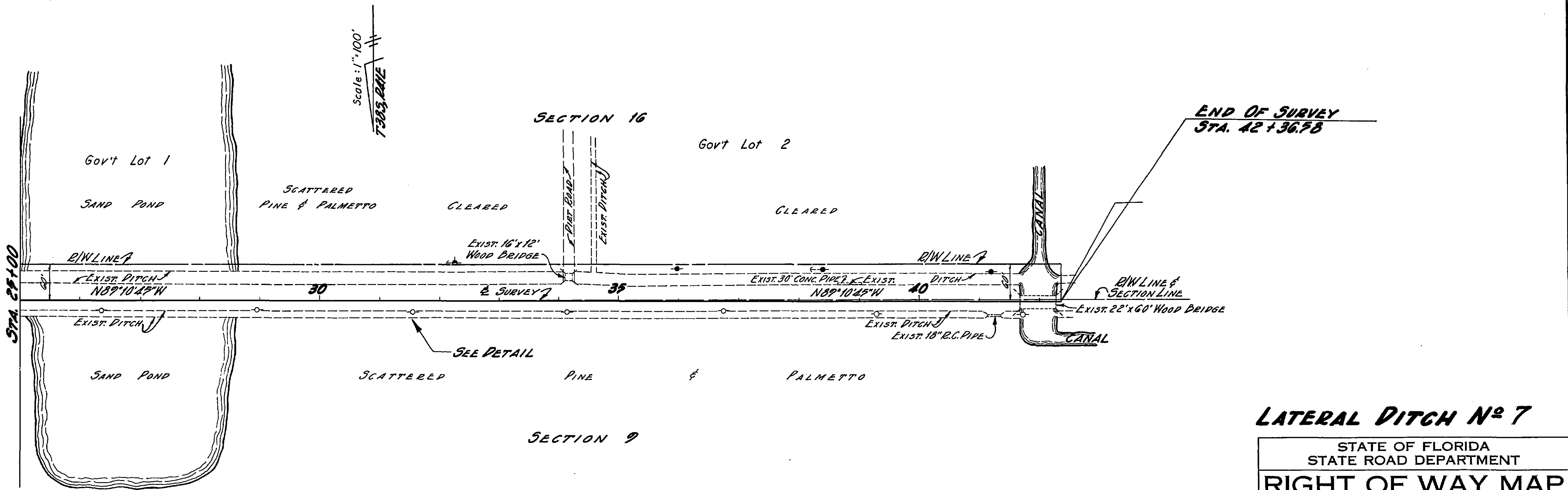
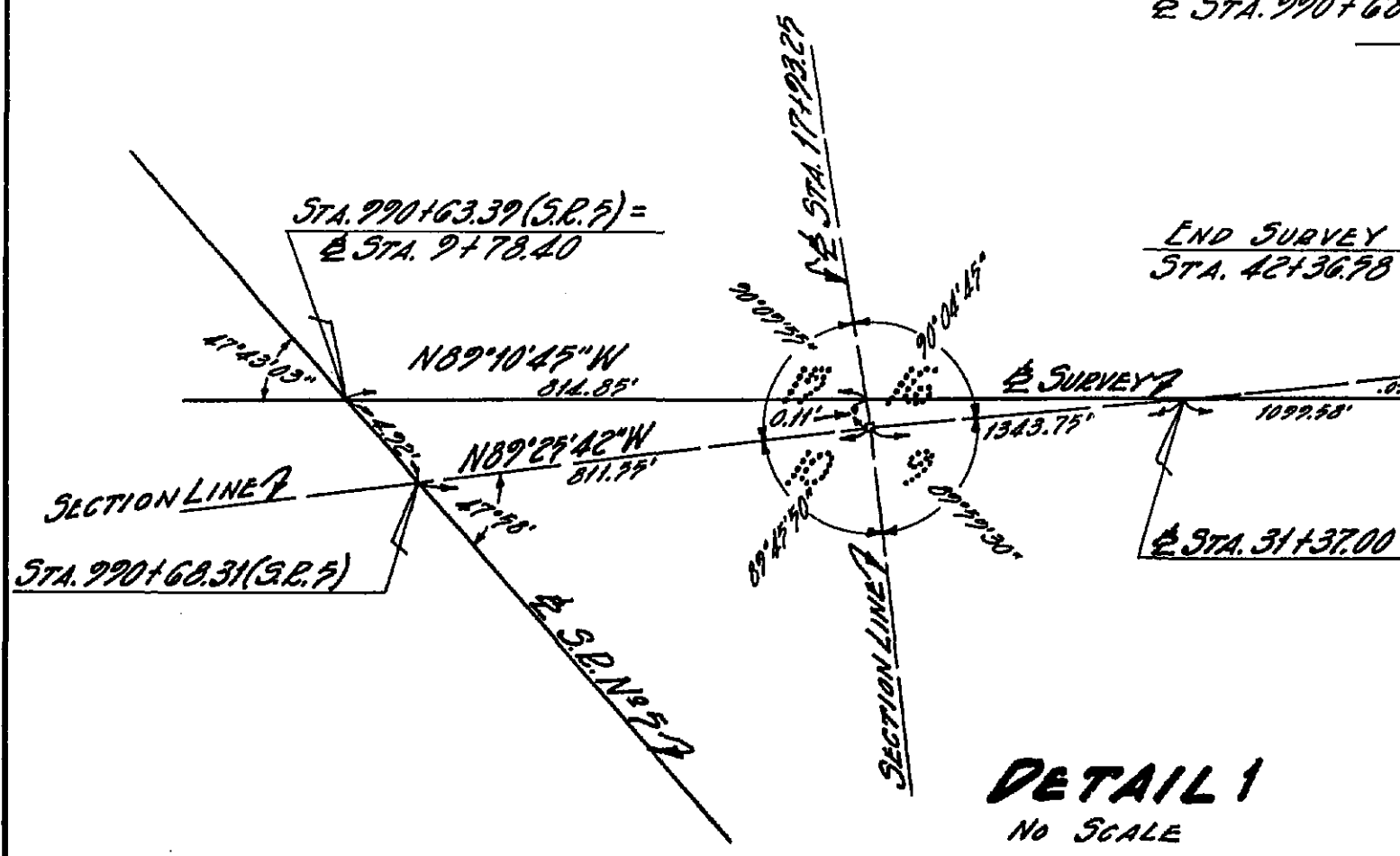
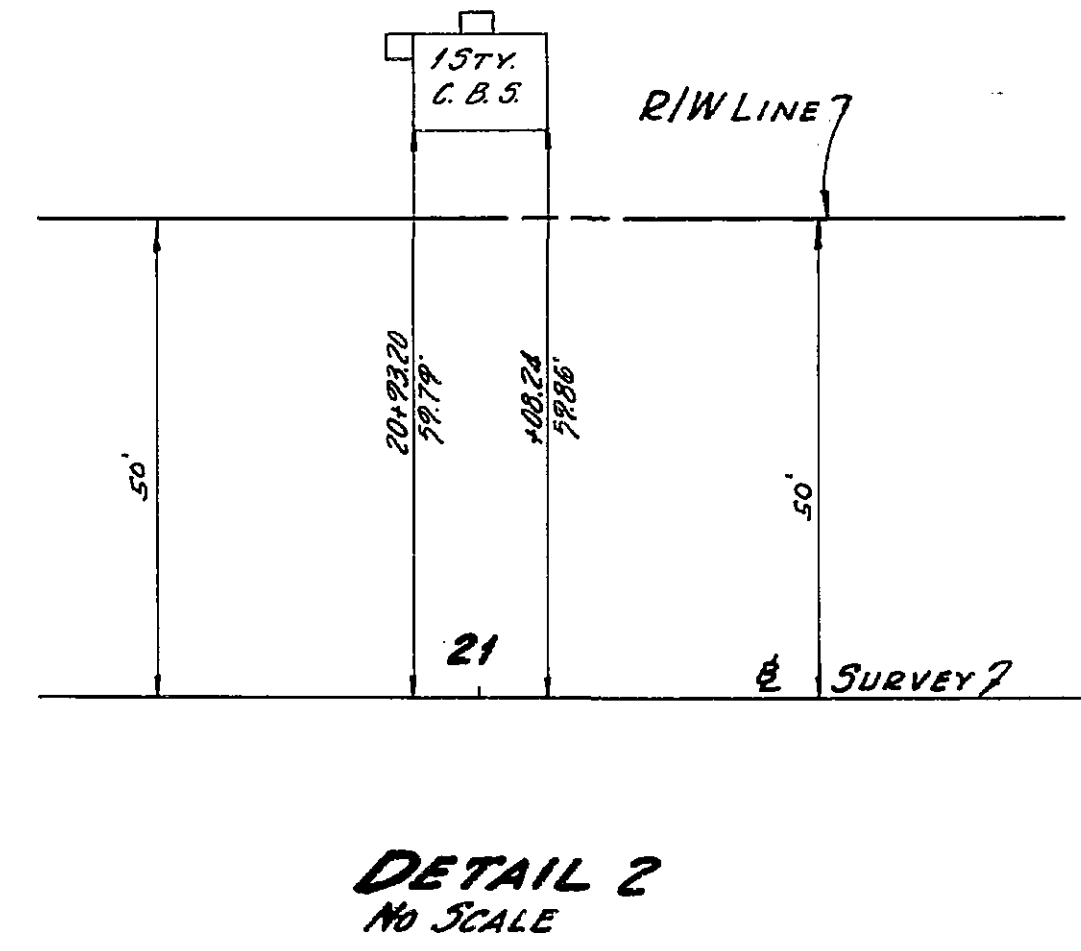
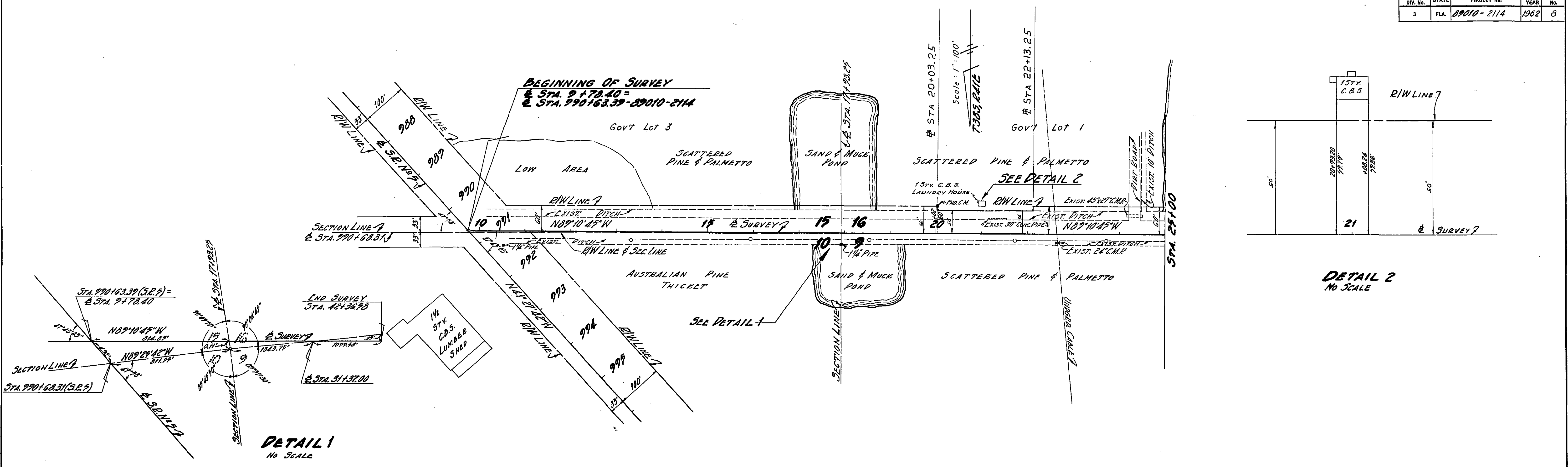
North Line Lot 207

BEGINNING OF SURVEY
STA. 13+66.34 LAT. DITCH N°6
STA. 878+43.75-89010-2114

MILES OR HANSON GRANT
P.B. 1, PG. 11, Palm Beach County Records

TRACT 4, BLOCK 75
ST. LUCIE INLET FARMS
P.B. 1, PG. 98
Palm Beach County Records

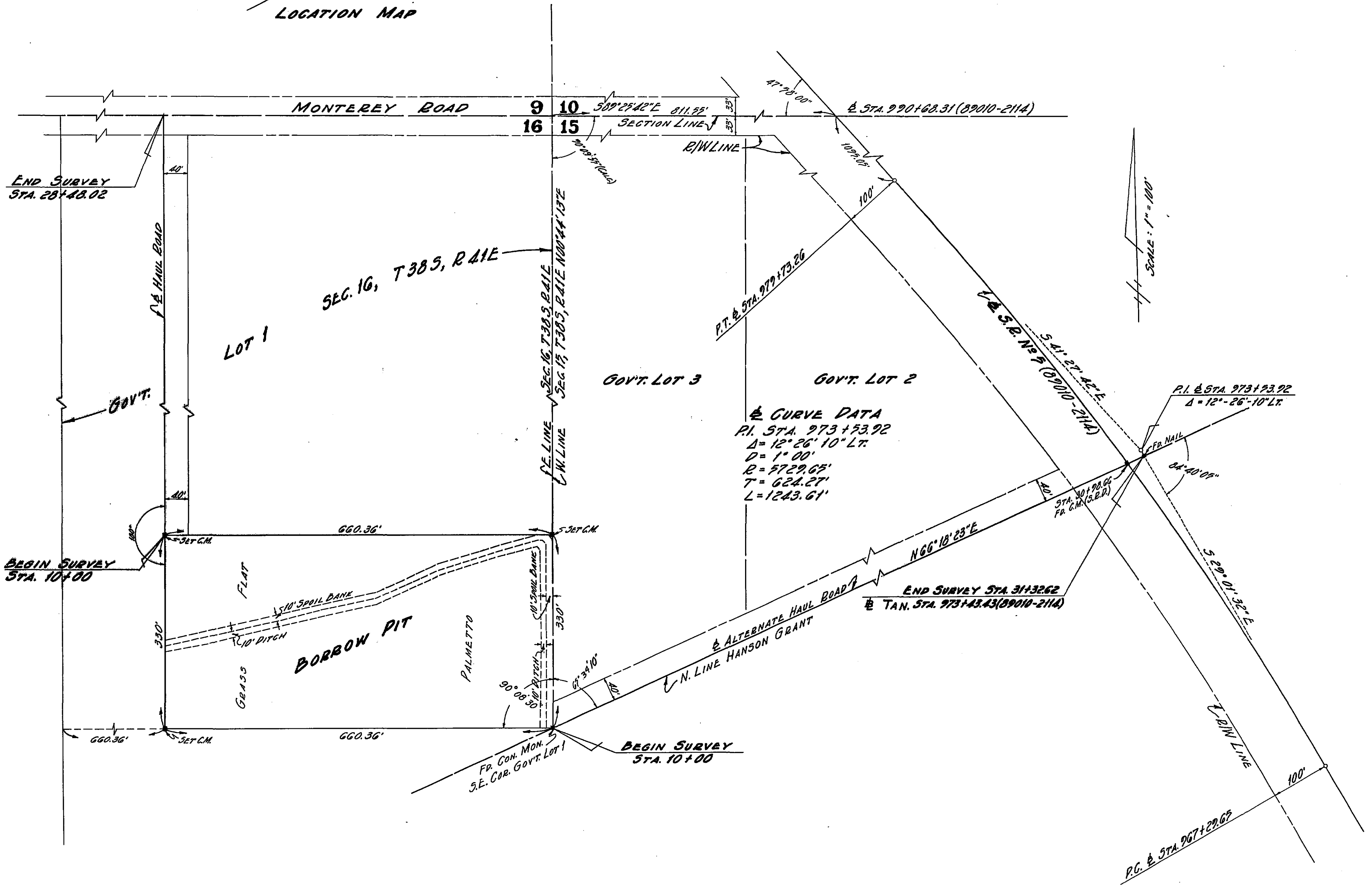
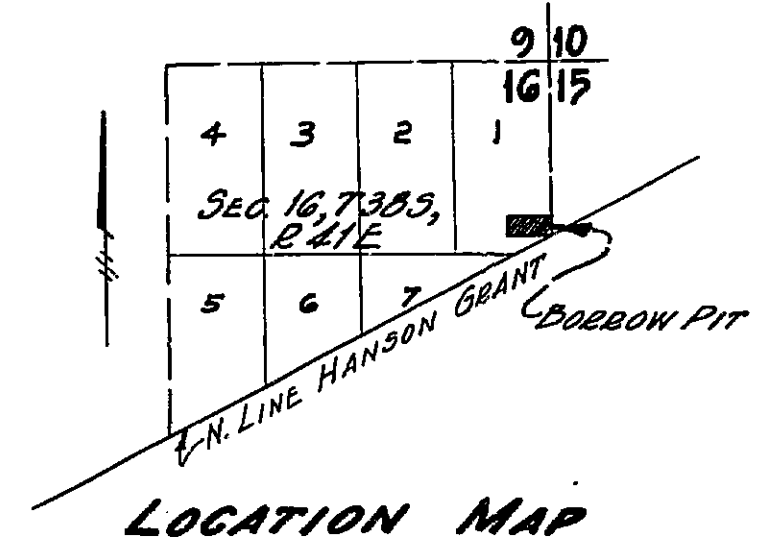
EQUATION
P.I. STA. 53+00.81 BACK LAT. DITCH N°6
P.I. STA. 17+37.29 AHEAD LAT. DITCH N°5



LATERAL DITCH No 7

STATE OF FLORIDA STATE ROAD DEPARTMENT			
RIGHT OF WAY MAP			
STATE ROAD No. 5		MARTIN COUNTY	
BY	DATE	APPROVED BY	DATE
DRAWN	E.R. 2/62	<i>J. H. Dandoon</i>	2-26-62
TRACED	G.U.M. 2/62		
CHECKED			
COMPARED			
INDEXED			
SECTION. 89010-2114 SHEET 8 OF			

NO	REVISION	BY	DATE



BORROW PIT

STATE OF FLORIDA
 STATE ROAD DEPARTMENT

RIGHT OF WAY MAP

STATE ROAD No. **5** MARTIN COUNTY

BY	DATE	APPROVED BY	DATE
DRAWN E.G.	2/62	James C. Davidson DISTRICT ENGINEER	7.3.62
TRACED G.J.M.	2/62		
CHECKED			
COMPARED		ENGINEER OF RIGHTS OF WAY	
INDEXED		STATE HIGHWAY ENGINEER	

NO.	REVISION	BY	DATE