

The right-of-way map when recorded is an instrument of title conveyance, transferring in accordance with Florida Statutes 337.29 (1977) all right, title, and interest of the Florida Department of Transportation in the road, street, highway, set forth on this map to MARTIN County, Florida.

Recorded in Public Records of MARTIN County, Florida, this 22 day of February, A.D. 1964 in Road Plat Book 27 Page 24.

Edwina S. Igou
Clerk of Circuit Court
Martin County, Florida

" KEY MAP "

BROCKWAY, WEBER & BROCKWAY
ENGINEERS, INCORPORATED
WEST PALM BEACH, FLORIDA

STATE OF FLORIDA
STATE ROAD DEPARTMENT

RIGHT OF WAY MAP

STATE ROAD NO. S-609 MARTIN COUNTY

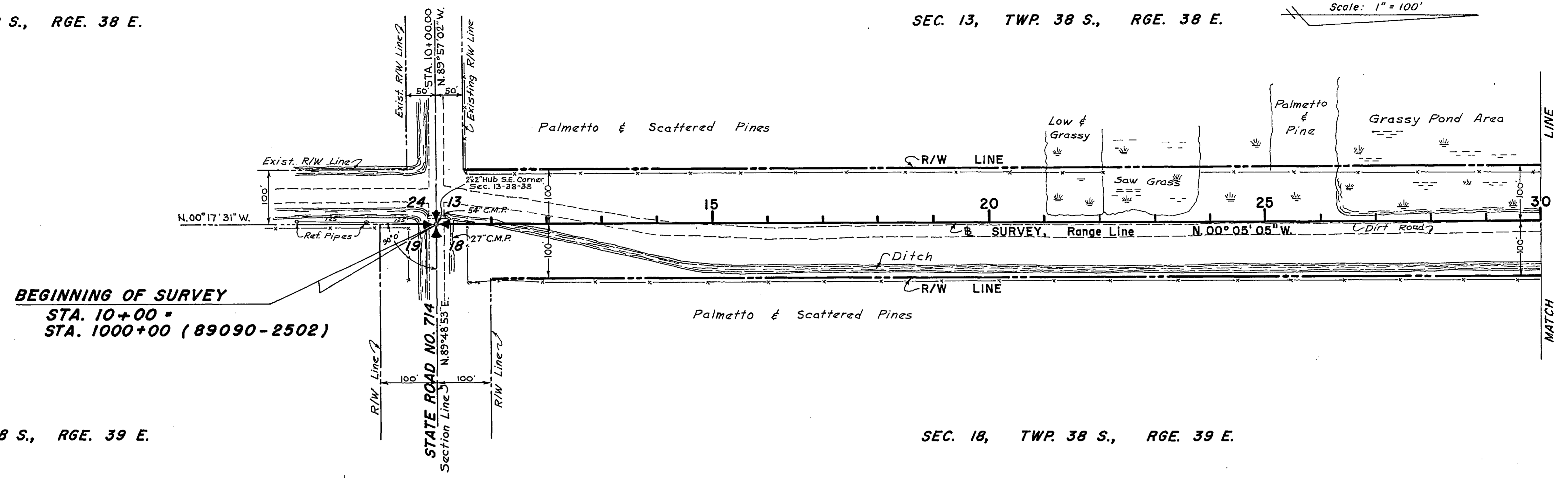
DRAWN	RBY	DATE	7/27/64	APPROVED BY	<i>[Signature]</i>	DATE	
CHECKED	RBY	DATE	7/27/64				
COMPARED	KJH	DATE	10/2/64				
INVEST.							

SECTION. 89001 - 2501 SHEET 1 OF 4

TWP. 38 S., RGE. 38 E.

SEC. 13, TWP. 38 S., RGE. 38 E.

Scale: 1" = 100'

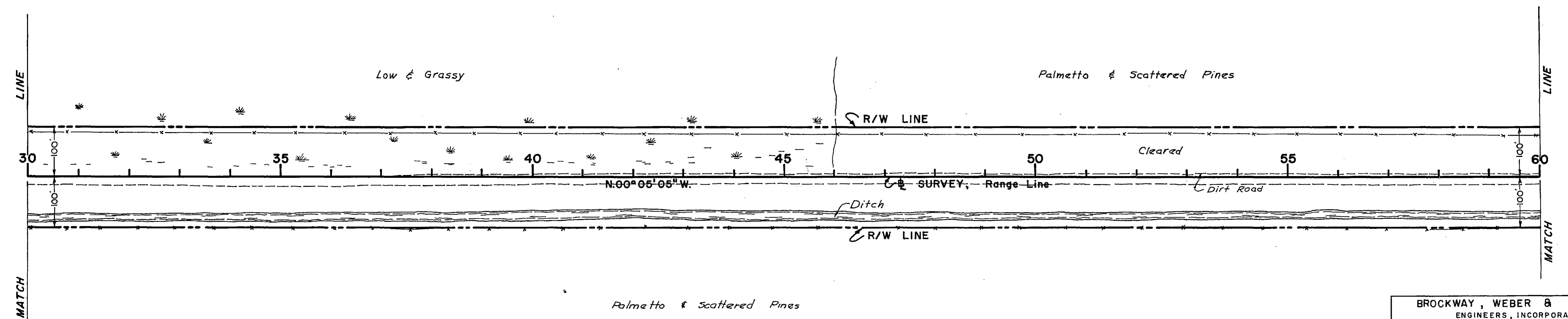


TWP. 38 S., RGE. 39 E.

SEC. 18, TWP. 38 S., RGE. 39 E.

SEC. 13, TWP. 38 S., RGE. 38 E.

Scale: 1" = 100'



SEC. 18, TWP. 38 S., RGE. 39 E.

BROCKWAY, WEBER & BROCKWAY
 ENGINEERS, INCORPORATED
 WEST PALM BEACH, FLORIDA

STATE OF FLORIDA
 STATE ROAD DEPARTMENT

RIGHT OF WAY MAP

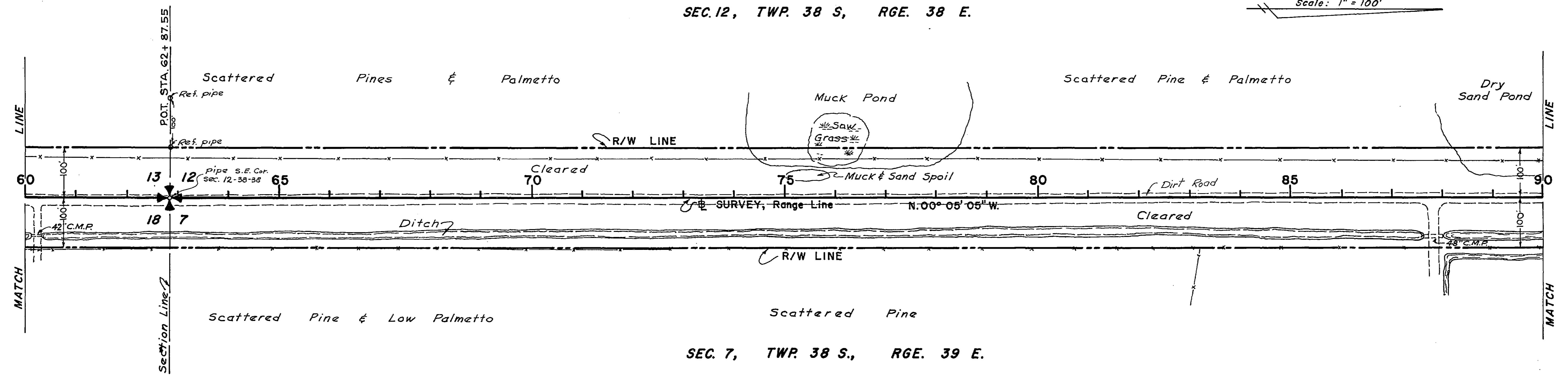
STATE ROAD NO. S-609 MARTIN COUNTY

By	DATE	APPROVED BY	DATE
DRAWN MGB	7/2/64		
TRACED MGB	7/2/64		
CHECKED KJH	10/22/64		
COMPARED			
INDEXED			

SECTION. 89001-2501 SHEET 2 OF 4

SEC. 12, TWP. 38 S., RGE. 38 E.

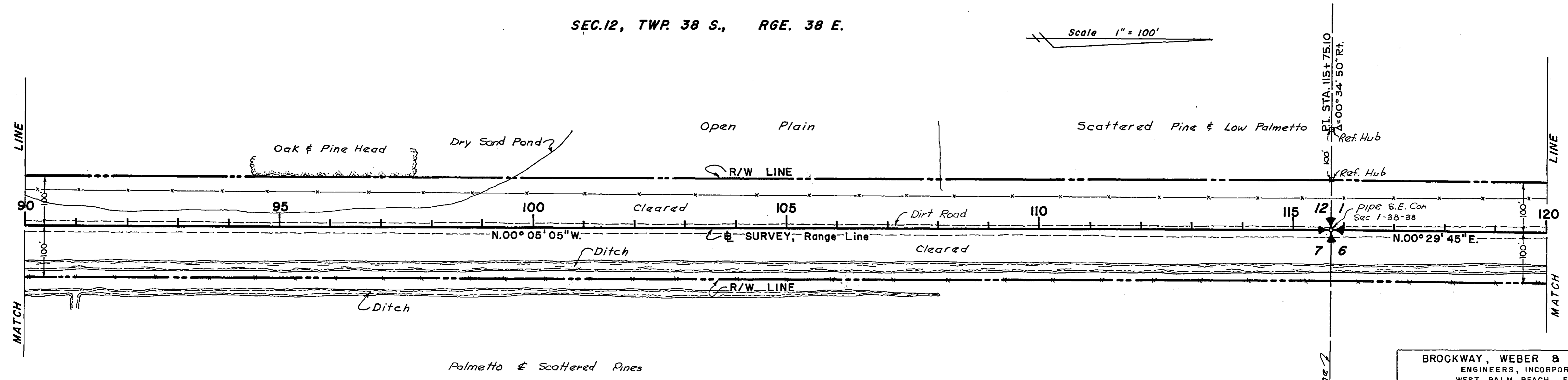
Scale: 1" = 100'



SEC. 7, TWP. 38 S., RGE. 39 E.

SEC. 12, TWP. 38 S., RGE. 38 E.

Scale 1" = 100'



SEC. 7, TWP. 38 S., RGE. 39 E.

BROCKWAY, WEBER & BROCKWAY
ENGINEERS, INCORPORATED
WEST PALM BEACH, FLORIDA

STATE OF FLORIDA
STATE ROAD DEPARTMENT

RIGHT OF WAY MAP

STATE ROAD No. S-609 MARTIN COUNTY

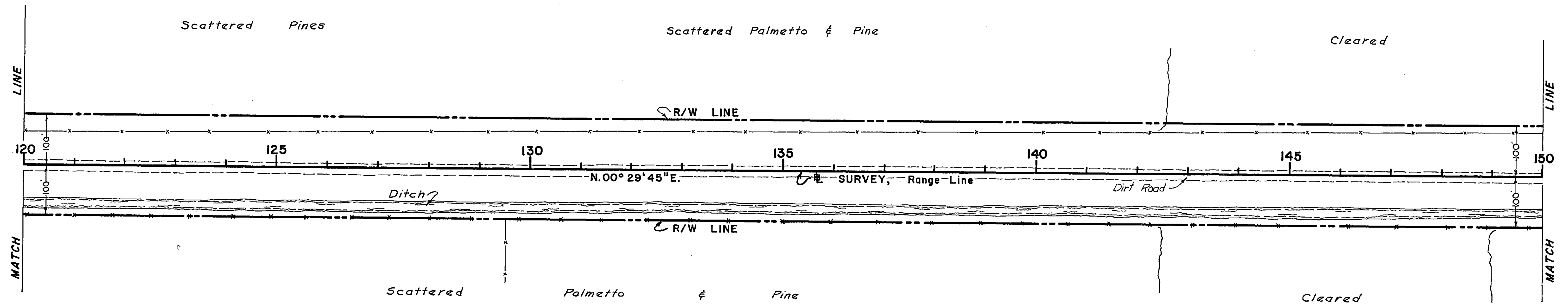
BY	DATE	APPROVED BY	DATE
DRAWN MGB	7/2/64		
TRACED MGB	7/2/64		
CHECKED KJH	10/22/64		
COMPARED			
INDEXED			

SECTION. 89001 - 2501 SHEET 3 OF 4

REVISION	BY	DATE

SEC. 1, TWP. 38 S., RGE. 38 E.

Scale: 1" = 100'

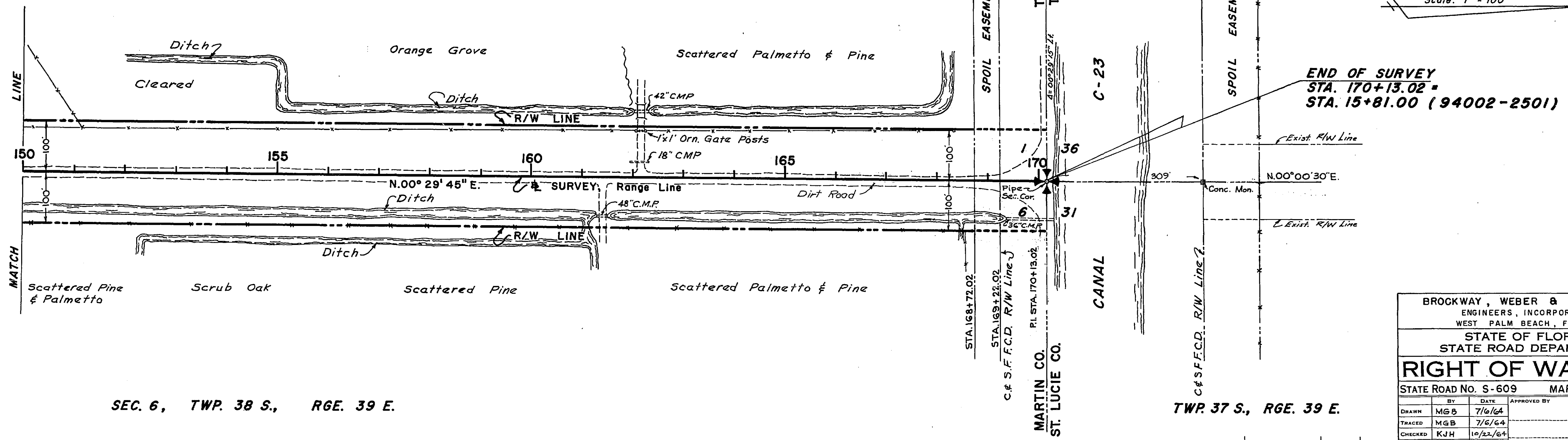


SEC. 6, TWP. 38 S., RGE. 39 E.

SEC. 1, TWP. 38 S., RGE. 38 E.

TWP. 37 S., RGE. 38 E.

Scale: 1" = 100'



SEC. 6, TWP. 38 S., RGE. 39 E.

TWP. 37 S., RGE. 39 E.

BROCKWAY, WEBER & BROCKWAY
ENGINEERS, INCORPORATED
WEST PALM BEACH, FLORIDA

STATE OF FLORIDA
STATE ROAD DEPARTMENT

RIGHT OF WAY MAP

STATE ROAD NO. S-609 MARTIN COUNTY

BY	DATE	APPROVED BY	DATE
DRAWN MGB	7/6/64		
TRACED MGB	7/6/64		
CHECKED KJH	10/22/64		
COMPARED			
INDEXED			

SECTION. 89001-2501 SHEET 4 OF 4