

LOCATION SKETCH
"NOT TO SCALE"

THIS IS TO CERTIFY THAT THE WITHIN AND ATTACHED SHEETS NUMBERED ONE (1) TO INCLUSIVE, CONSTITUTE A TRUE COPY OF THE OFFICIAL RIGHT OF WAY MAP SHOWING LOCATION AND SURVEY BY THE STATE OF FLORIDA DEPARTMENT OF TRANSPORTATION FOR A PORTION OF STATE ROAD 710, DESIGNATED AS SECTION 89070 IN MARTIN COUNTY, FLORIDA.

THE PROPERTY OUTLINED IN RED INK, AND LABELED MAINT. R/W LINE ON THE SAID SHEETS HAS BEEN VESTED IN THE STATE OF FLORIDA DEPARTMENT OF TRANSPORTATION, PURSUANT TO THE PROVISIONS OF SECTION 341.59 FLORIDA STATUTES OF 1951, SECTION 337.31 FLORIDA STATUTES OF 1955 AND SECTION 95.361 FLORIDA STATUTES OF 1974, AND/OR UNDER FORMAL CONVEYANCE AND OTHER INSTRUMENTS.

IN WITNESS WHEREOF, WE HAVE HEREUNTO SET OUR HANDS AND AFFIXED THE SEAL OF THE STATE OF FLORIDA DEPARTMENT OF TRANSPORTATION AT TALLAHASSEE, FLORIDA, THIS 12 TH DAY OF AUGUST, A.D. 1976.

/S/ TOM WEBB JR.
SECRETARY OF TRANSPORTATION,
STATE OF FLORIDA DEPARTMENT
OF TRANSPORTATION

/S/ CAROLYN SCARALIN
EXECUTIVE SECRETARY, STATE OF
FLORIDA DEPARTMENT OF TRANSPORTATION

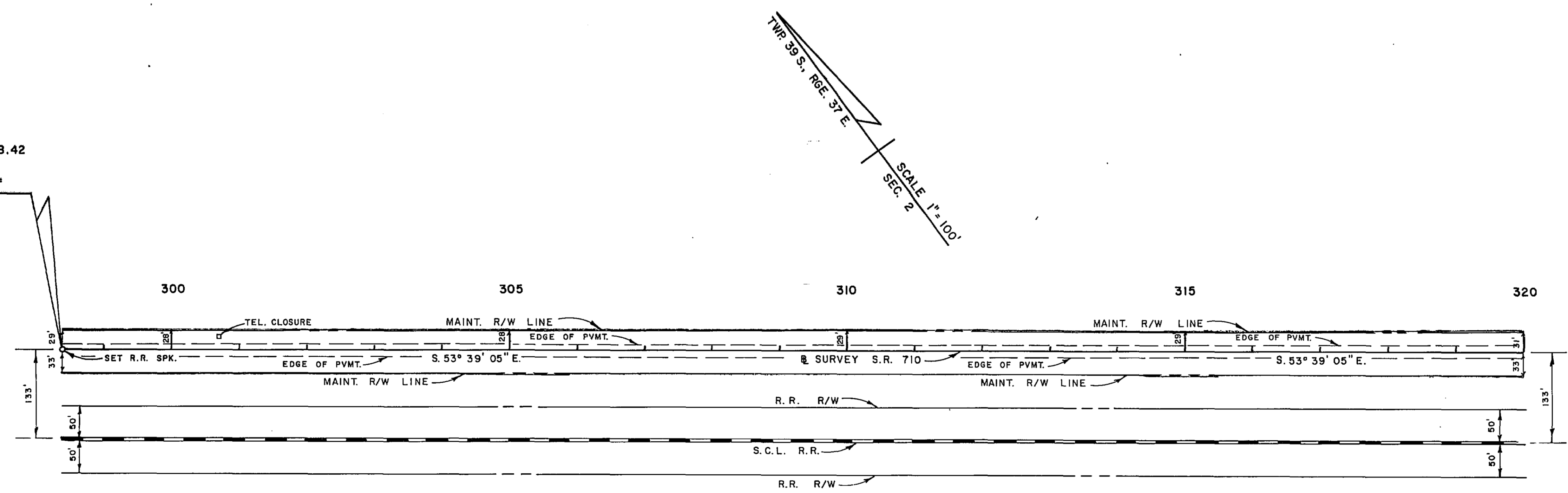
THIS IS TO CERTIFY THAT THE RIGHT OF WAY LIMITS AS SHOWN ON THIS MAP HAVE BEEN MAINTAINED CONTINUOUSLY FOR FOUR (4) YEARS IMMEDIATELY PAST WITHOUT INTERRUPTION OR DISTURBANCE BETWEEN MILE POSTS 5.100 AND 15.110, (S.L.D.)

/S/ J.R. THAXTON
MAINTENANCE ENGINEER

ACCEPTED FOR FILES AND RECORDED IN THE PUBLIC RECORDS OF MARTIN COUNTY, FLORIDA, THIS 23 RD DAY OF AUGUST, A.D. 1976 IN RIGHT OF WAY PLAT BOOK 7, PAGE 4

/S/ LOUISE V. ISAACS BY: GWEN HENRY D.C.
CLERK OF CIRCUIT COURT OF MARTIN
COUNTY FLORIDA

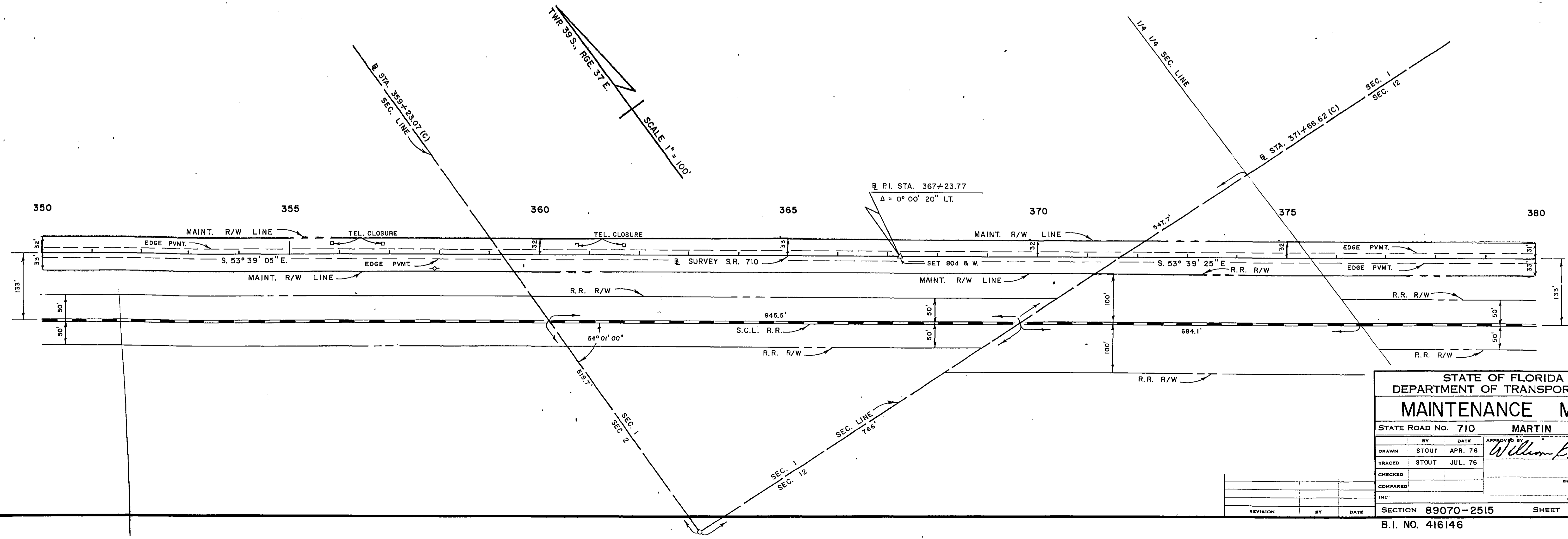
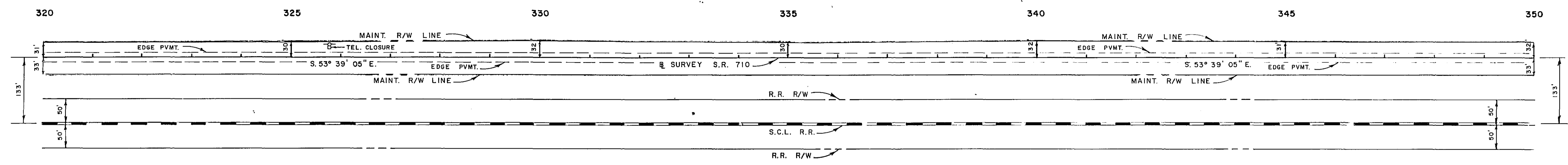
BEGIN PROJECT B STA. 298+38.42
S.R. 710 89070-2515
BEARING S. 53° 39' 05" E. AHD. =
BEARING S. 53° 39' 21" E. BK.
S.R. 710 89070-2508



STATE OF FLORIDA DEPARTMENT OF TRANSPORTATION			
MAINTENANCE MAP			
STATE ROAD NO. 710		MARTIN COUNTY	
DRAWN	STOUT	DATE	APPROVED BY
TRACED	STOUT	JUL. 76	<i>William E. Smith</i> DISTRICT ENGINEER
CHECKED			ENGINEER OF RIGHT OF WAY
COMPARED			STATE HIGHWAY ENGINEER
INDEXED			
REVISION	BY	DATE	
SECTION 89070-2515			SHEET 1 OF 10

SEC. 1	SEC. 2	STATE	F A PROJECT NO.	LOCAL	SHEET
1	2	FLA.		7649	2

TWP. 39 S., RGE. 37 E.
SCALE 1" = 100'
SEC. 2



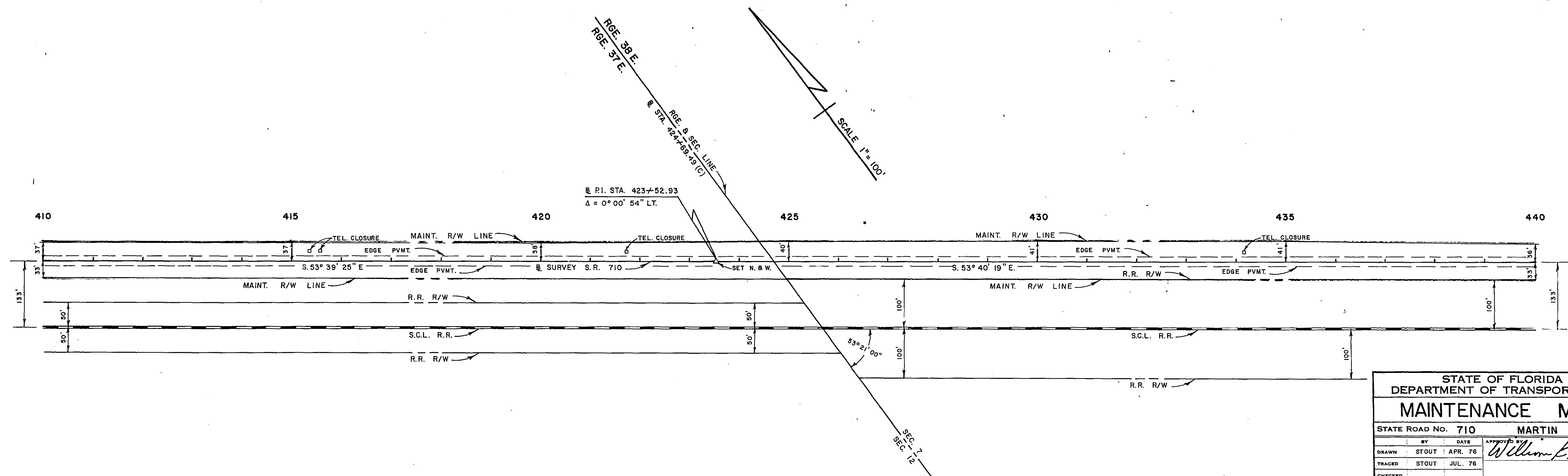
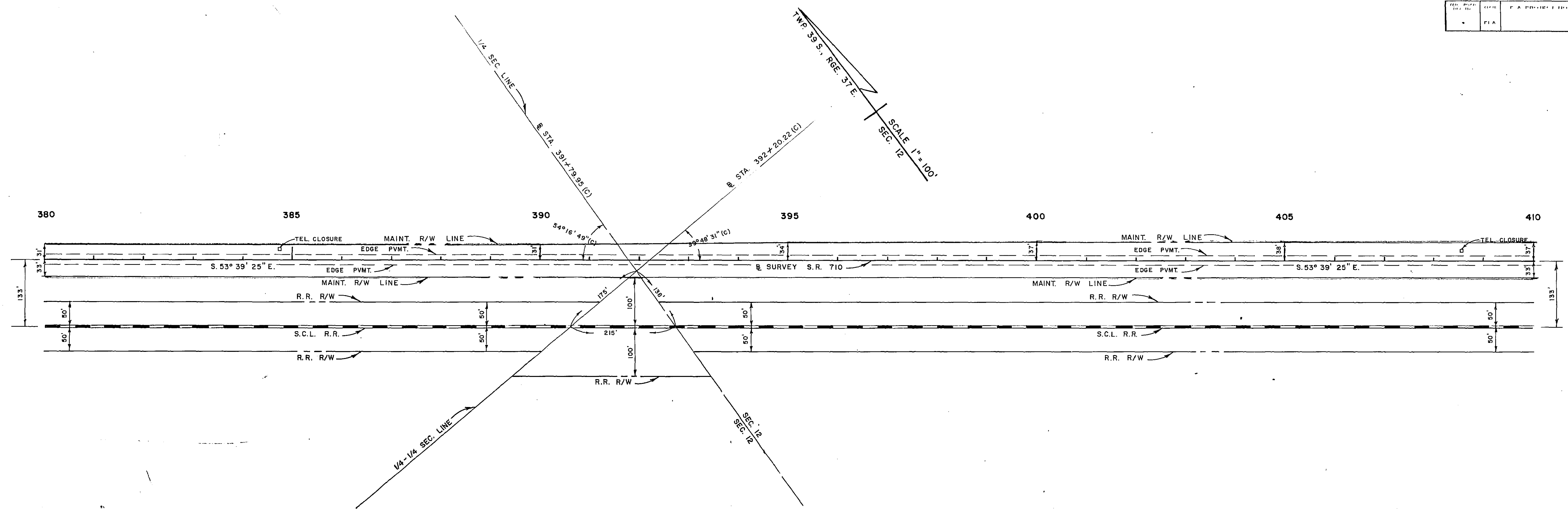
STATE OF FLORIDA
DEPARTMENT OF TRANSPORTATION
MAINTENANCE MAP

STATE ROAD NO. 710 MARTIN COUNTY

BY	DATE	APPROVED BY	DATE
DRAWN: STOUT	APR. 76	<i>William E. Smith</i>	
TRACED: STOUT	JUL. 76		
CHECKED:			
COMPARED:			
INC:			

ENGINEER OF RIGHT OF WAY
STATE HIGHWAY ENGINEER

REVISION	BY	DATE



**STATE OF FLORIDA
DEPARTMENT OF TRANSPORTATION
MAINTENANCE MAP**

STATE ROAD NO. 710 MARTIN COUNTY

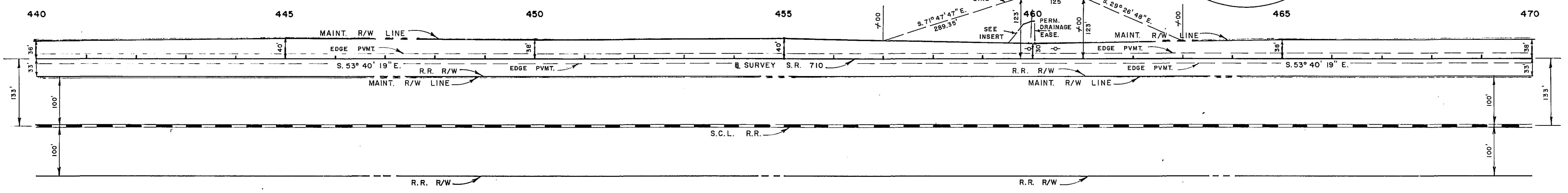
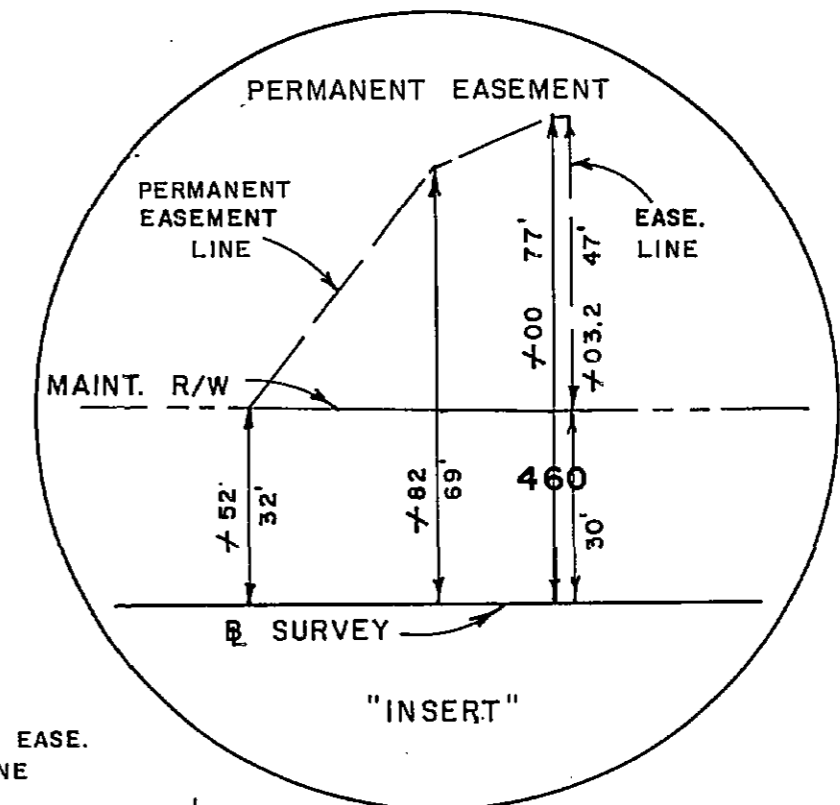
DRAWN	BY	DATE	APPROVED BY	DATE
STOUT	STOUT	APR. 76	<i>William E. Smith</i>	
TRACED	STOUT	JUL. 76	DISTRICT ENGINEER	
CHECKED				
COMPARED				
INDEXED				

SECTION 89070-2515 SHEET 3 OF 10

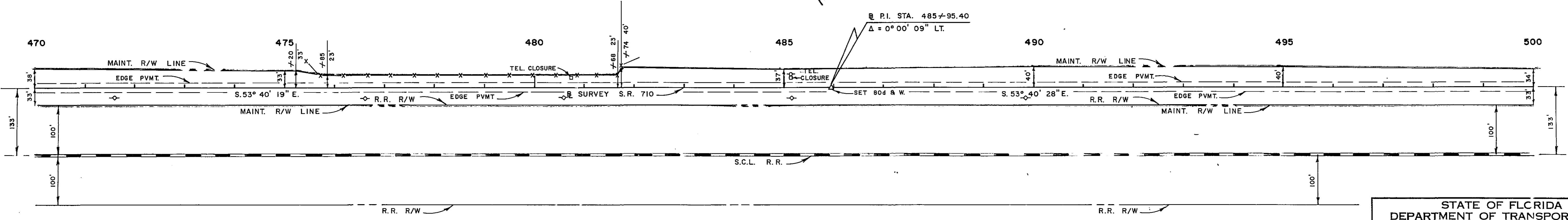
REVISION	BY	DATE

ED. ROAD DIV. No.	SHEET	F. A. PROJECT NO.	ISS. YEAR	SHEET NO.
3	FLA.			

TWP. 39 S., RGE. 38 E.
SCALE 1" = 100'



TWP. 39 S., RGE. 38 E.
SCALE 1" = 100'



STATE OF FLORIDA
DEPARTMENT OF TRANSPORTATION
MAINTENANCE MAP

STATE ROAD NO. 710 MARTIN COUNTY

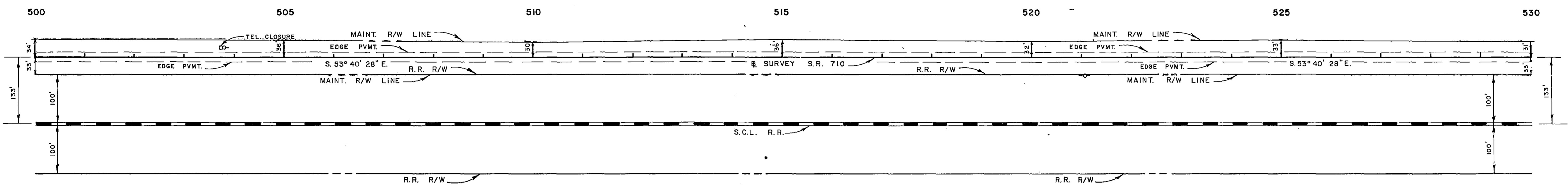
DRAWN	BY	DATE	APPROVED BY	DATE
STOUT	STOUT	APR. 76	<i>William F. Smith</i>	
TRACED	STOUT	JUL. 76	DISTRICT ENGINEER	
CHECKED				
COMPARED				
INDEXED				

SECTION 89070-2515 SHEET 4 OF 10
B.I. NO. 416146

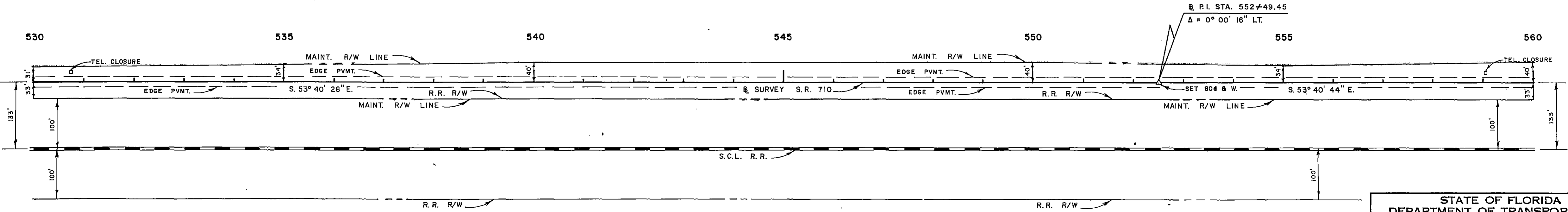
REVISION	BY	DATE

111	BY: AD	116	F A PROJECT NO.	112	SHEET
2	FLA.			112	NO.

TWP 39 S., RGE 38 E.
SCALE 1" = 100'



TWP 39 S., RGE 38 E.
SCALE 1" = 100'

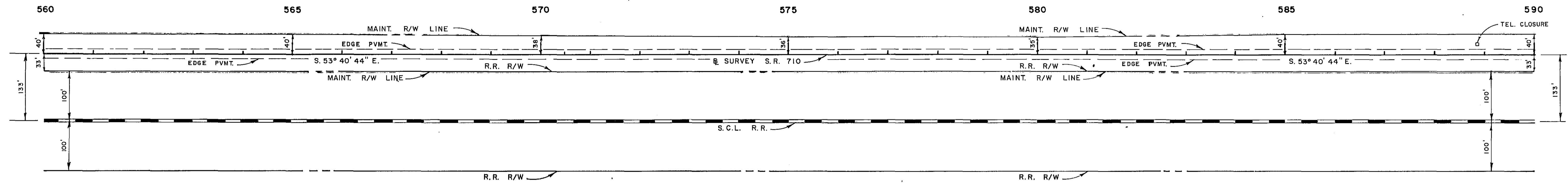


STATE OF FLORIDA DEPARTMENT OF TRANSPORTATION					
MAINTENANCE MAP					
STATE ROAD NO. 710			MARTIN COUNTY		
DRAWN	BY	DATE	APPROVED BY	DATE	
STOUT	STOUT	APR. 76	<i>William E. Smith</i>		DISTRICT ENGINEER
TRACED	STOUT	JUL. 76			ENGINEER OF RIGHT OF WAY
CHECKED					STATE HIGHWAY ENGINEER
COMPARED					
INDEXED					
SECTION 89070-2515				SHEET 5 OF 10	

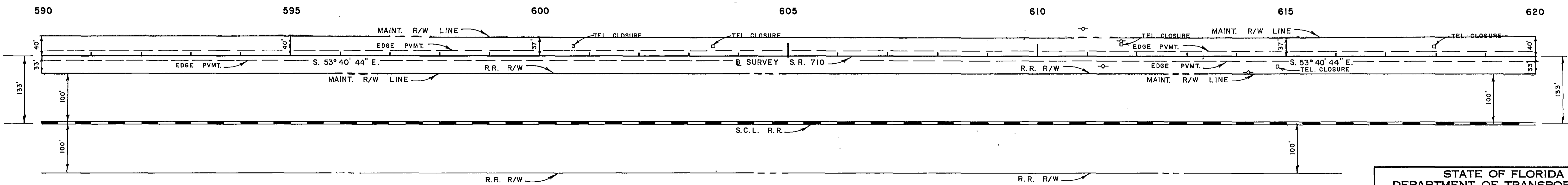
B.I. NO. 416146

DATE	SCALE	PROJECT NO.	SHEET NO.
PLA.			

TWP 39 S., R6E 38 E.
SCALE 1" = 100'



TWP 39 S., R6E 38 E.
SCALE 1" = 100'



STATE OF FLORIDA
DEPARTMENT OF TRANSPORTATION

MAINTENANCE MAP

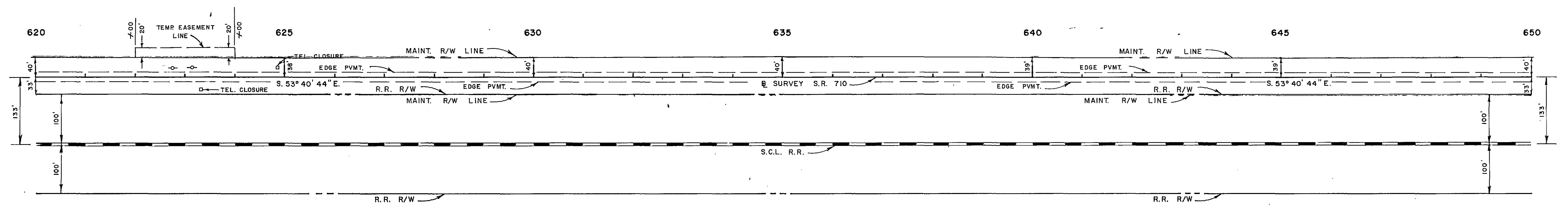
STATE ROAD NO. 710 MARTIN COUNTY

DRAWN	BY	DATE	APPROVED BY	DATE
STOUT	STOUT	APR. 76	<i>William E. Smith</i>	
TRACED	STOUT	JUL. 76		
CHECKED				
COMPARED				
INDEXED				

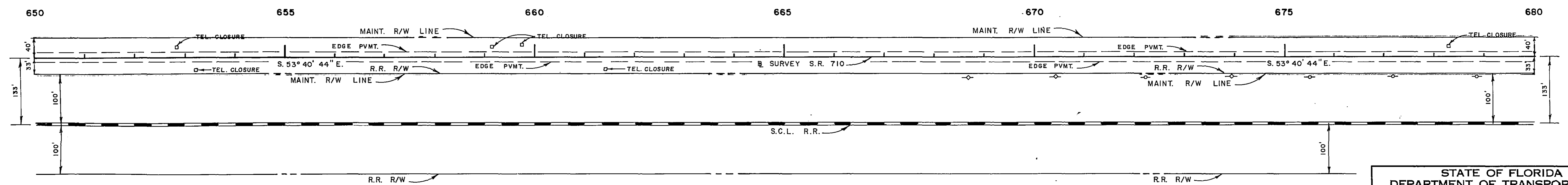
ENGINEER OF RIGHT OF WAY
STATE HIGHWAY ENGINEER

REVISION	BY	DATE

TWP. 39 S., RGE. 38 E.
SCALE 1"=100'



TWP. 39 S., RGE. 38 E.
SCALE 1"=100'



STATE OF FLORIDA
DEPARTMENT OF TRANSPORTATION

MAINTENANCE MAP

STATE ROAD NO. 710 MARTIN COUNTY

DRAWN	STOUT	DATE	APR. 76
TRACED	STOUT	DATE	JUL. 76
CHECKED			
COMPARED			
INDEXED			

APPROVED BY: *William E. Smith* DATE: _____
DISTRICT ENGINEER

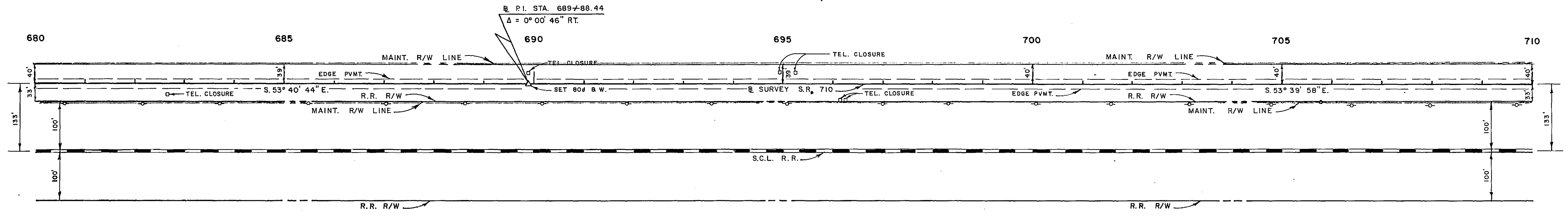
ENGINEER OF RIGHT OF WAY
STATE HIGHWAY ENGINEER

SECTION 89070-2515 SHEET 7 OF 10
B.I. NO. 416146

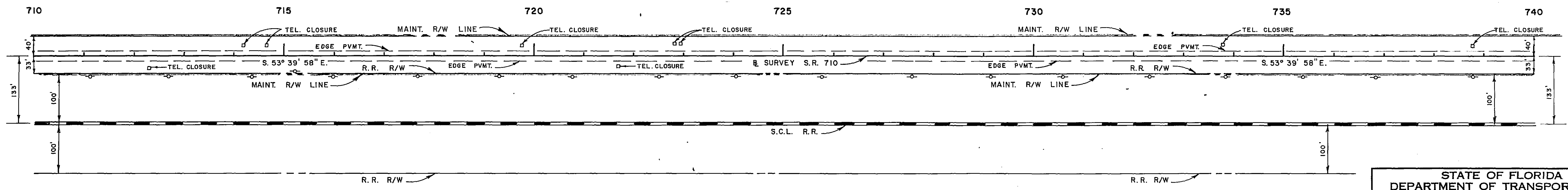
REVISION	BY	DATE

FILE NO.	DATE	F A PROJECT NO.	FISCAL YEAR	SHEET NO.
8	FLA.			

TWP. 39 S., RGE. 38 E.
SCALE 1" = 100'



TWP. 39 S., RGE. 38 E.
SCALE 1" = 100'



STATE OF FLORIDA
DEPARTMENT OF TRANSPORTATION

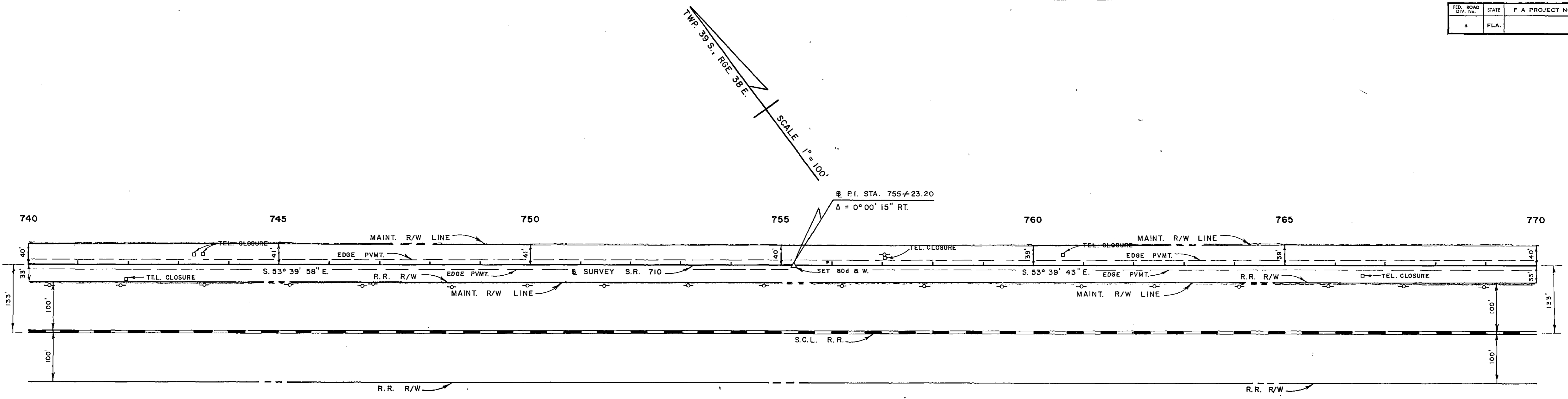
MAINTENANCE MAP

STATE ROAD NO. 710 MARTIN COUNTY

BY	DATE	APPROVED BY	DATE
STOUT	APR. 76	<i>William E. Furb</i>	
TRACED	STOUT	JUL. 76	DISTRICT ENGINEER
CHECKED			ENGINEER OF RIGHT OF WAY
INDEXED			STATE HIGHWAY ENGINEER

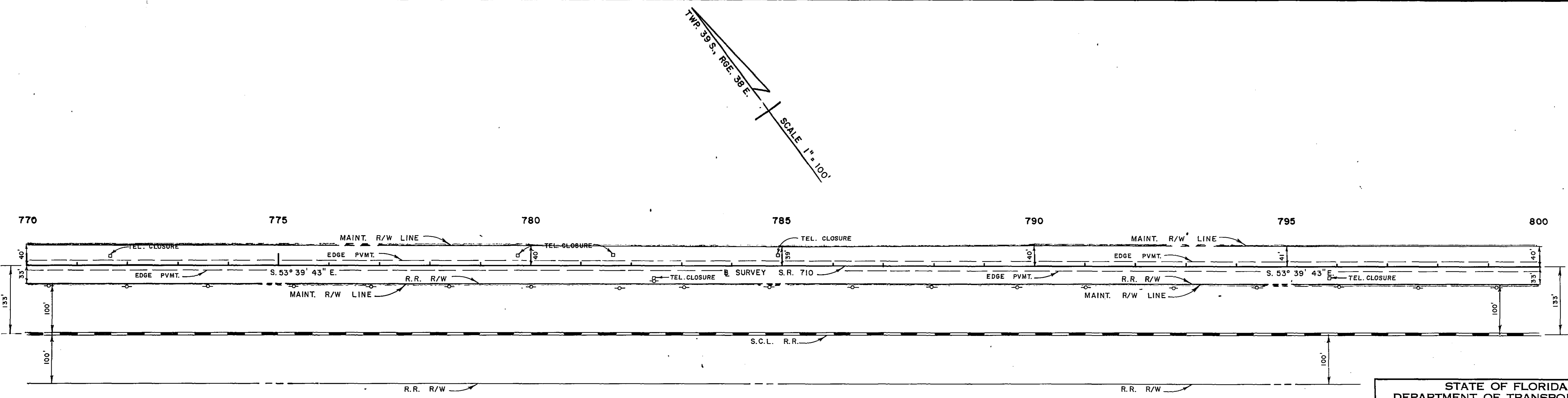
SECTION 89070-2515 SHEET 8 OF 10

B.I. NO. 416146



TWP. 39 S., RGE. 38 E.
SCALE 1" = 100'

P.I. STA. 755+23.20
Δ = 0° 00' 15" RT.



TWP. 39 S., RGE. 38 E.
SCALE 1" = 100'

STATE OF FLORIDA
DEPARTMENT OF TRANSPORTATION
MAINTENANCE MAP

STATE ROAD NO. 710 MARTIN COUNTY

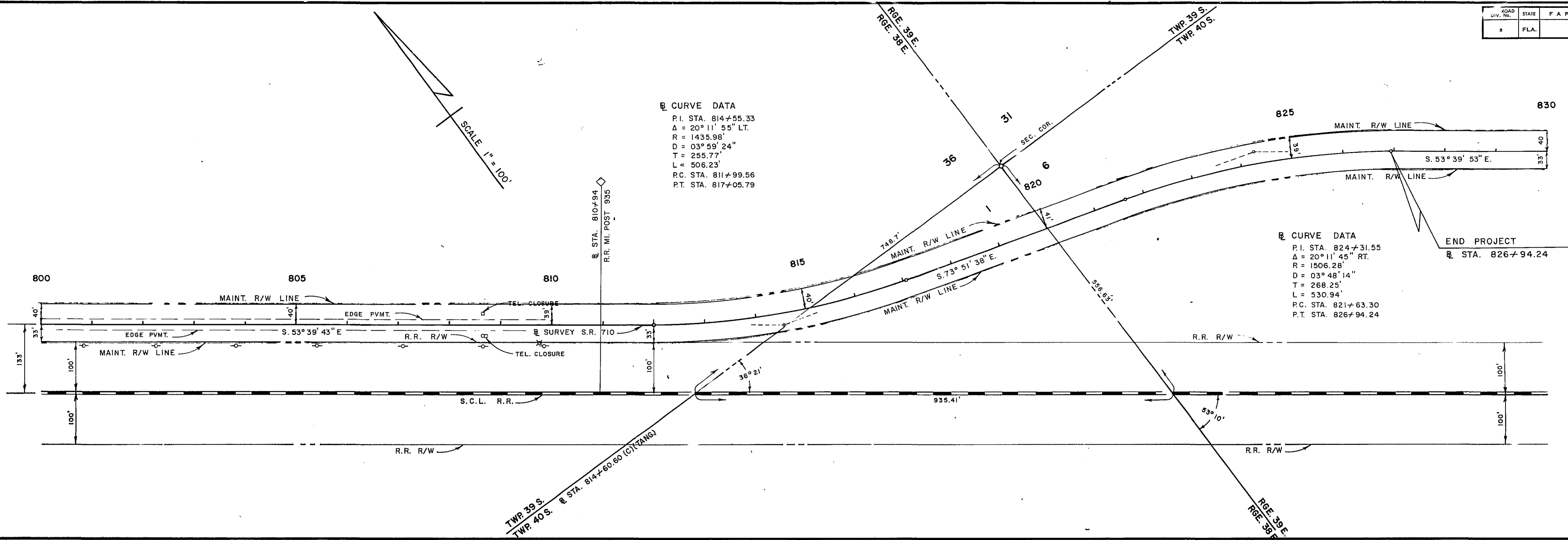
DRAWN	BY	DATE	APPROVED BY
STOUT	STOUT	APR. 76	<i>William E. Jones</i>
TRACED	STOUT	JUL. 76	
CHECKED			
COMPARED			
INDEXED			

SECTION 89070-2515 SHEET 9 OF 10

ROAD DIV. No.	STATE	F. A. PROJECT NO.	FISCAL YEAR	SHEET No.
3	FLA.			

☒ CURVE DATA
 P.I. STA. 814+55.33
 $\Delta = 20^\circ 11' 55''$ LT.
 $R = 1435.98'$
 $D = 03^\circ 59' 24''$
 $T = 255.77'$
 $L = 506.23'$
 P.C. STA. 811+99.56
 P.T. STA. 817+05.79

☒ CURVE DATA
 P.I. STA. 824+31.55
 $\Delta = 20^\circ 11' 45''$ RT.
 $R = 1506.28'$
 $D = 03^\circ 48' 14''$
 $T = 268.25'$
 $L = 530.94'$
 P.C. STA. 821+63.30
 P.T. STA. 826+94.24



STATE OF FLORIDA DEPARTMENT OF TRANSPORTATION			
MAINTENANCE MAP			
STATE ROAD No. 710		MARTIN COUNTY	
BY	DATE	APPROVED BY	DATE
STOUT	MAY 76	<i>William E. Smith</i>	
TRACED	STOUT JUL. 76	DISTRICT ENGINEER	
CHECKED		ENGINEER OF RIGHT OF WAY	
COMPARED		STATE HIGHWAY ENGINEER	
INDEXED			
REVISION	BY	DATE	