

CERTIFICATE

THIS IS TO CERTIFY THAT THE WITHIN AND ATTACHED SHEETS NUMBERED ONE (1) TO TWO (2), INCLUSIVE, CONSTITUTE A TRUE COPY OF THE OFFICIAL RIGHT OF WAY MAP SHOWING LOCATION AND SURVEY BY THE STATE OF FLORIDA DEPARTMENT OF TRANSPORTATION FOR A PORTION OF STATE ROAD 707, DESIGNATED AS SECTION 89030 IN MARTIN COUNTY, FLORIDA.

THE PROPERTY OUTLINED IN RED INK, AND LABELED MAINT. R/W LINE ON THE SAID SHEETS HAS BEEN VESTED IN THE STATE OF FLORIDA DEPARTMENT OF TRANSPORTATION, PURSUANT TO THE PROVISIONS OF SECTION 95.361 FLORIDA STATUTES.

IN WITNESS WHEREOF, WE HAVE HEREUNTO SET OUR HANDS AND AFFIXED THE SEAL OF THE STATE OF FLORIDA DEPARTMENT OF TRANSPORTATION, AT TALLAHASSEE, FLORIDA, THIS 29TH DAY OF AUGUST A.D. 1979.

THIS IS TO CERTIFY THE RIGHT OF WAY LIMITS AS SHOWN ON THIS MAP HAVE BEEN MAINTAINED CONTINUOUSLY FOR FOUR (4) YEARS WITHOUT INTERRUPTION OR DISTURBANCE BETWEEN MILE POSTS 7.070 AND 8.003 (S.L.D.)

MAINTENANCE ENGINEER

/S/ WILLIAM N. ROSE
SECRETARY OF TRANSPORTATION,
STATE OF FLORIDA DEPARTMENT
OF TRANSPORTATION

/S/ ROBIN JOHNSON
EXECUTIVE SECRETARY,
STATE OF FLORIDA DEPARTMENT
OF TRANSPORTATION

ACCEPTED FOR FILES AND RECORDED IN THE PUBLIC RECORDS OF MARTIN COUNTY, FLORIDA, THIS 6TH DAY OF SEPTEMBER A.D. 1979 IN RIGHT OF WAY ROAD PLAT BOOK 7 PAGE 94.
FILE NO. 352289

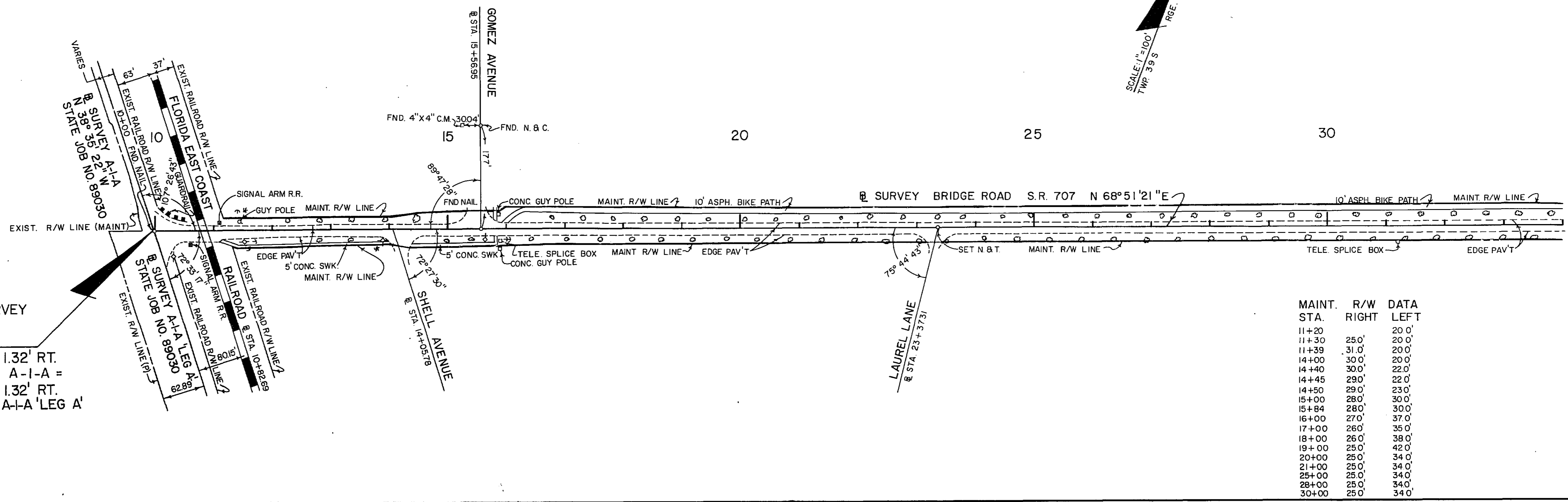
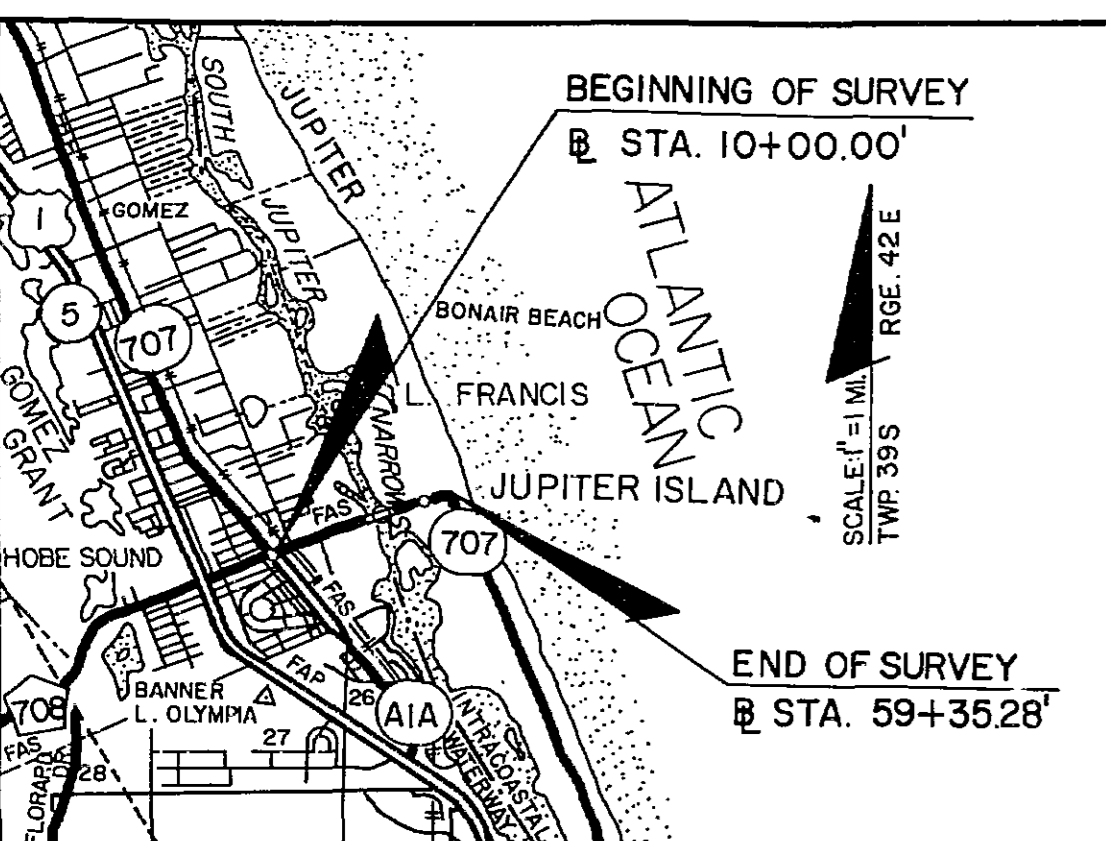
LOUISE V. ISAACS
CLERK OF CIRCUIT COURT OF
MARTIN COUNTY, FLORIDA
/S/ BY CHARLOTTE BURKEY D.C

*THIS MAP FILED UNDER 89000
ENGINEERING FOLDER MISC. 10
BRIDGE ROAD*

STATE OF FLORIDA 8-13-79 DEPARTMENT OF TRANSPORTATION				
MAINTENANCE MAP				
STATE ROAD No. 707		MARTIN COUNTY		
DRAWN	GRESHAM	DATE	8-10-79	APPROVED BY <i>William E. Smith</i> DISTRICT ENGINEER
TRACED				
CHECKED	GRAY	DATE	8-13-79	
COMPARED				
INDEXED				
SECTION 89030				SHEET 1 OF 2

REVISION	BY	DATE

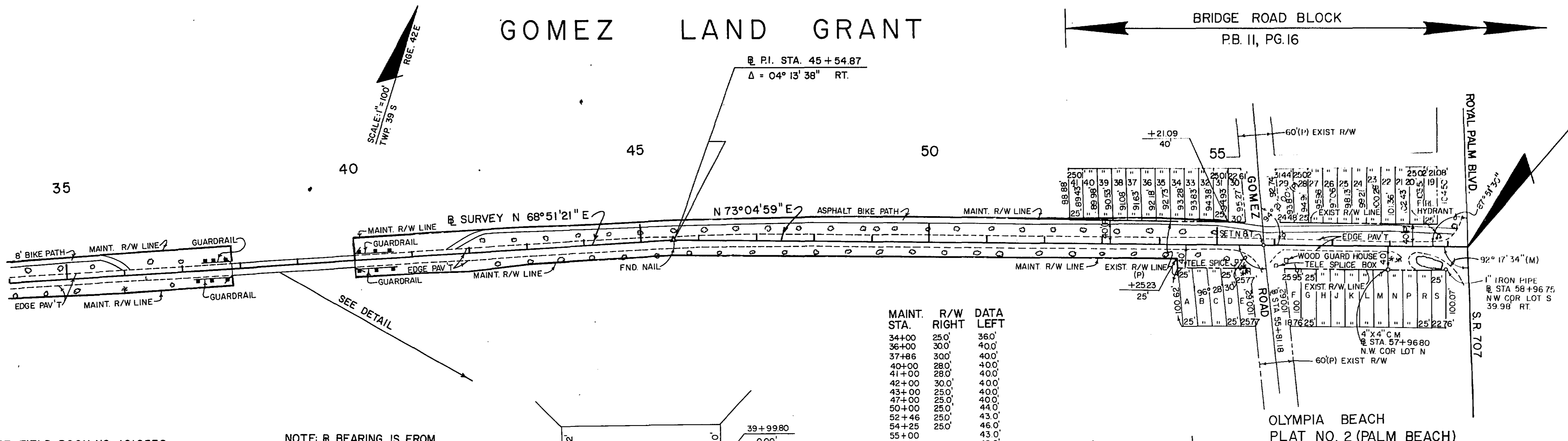
GOMEZ LAND GRANT



BEGINNING OF SURVEY
 @ STA. 10+00.00
 BRIDGE ROAD =
 @ STA. 10+03.09 1.32' RT.
 STATE JOB 89030 A-1-A =
 @ STA. 100+03.09 1.32' RT.
 STATE JOB 89030 A-1-A 'LEG A'

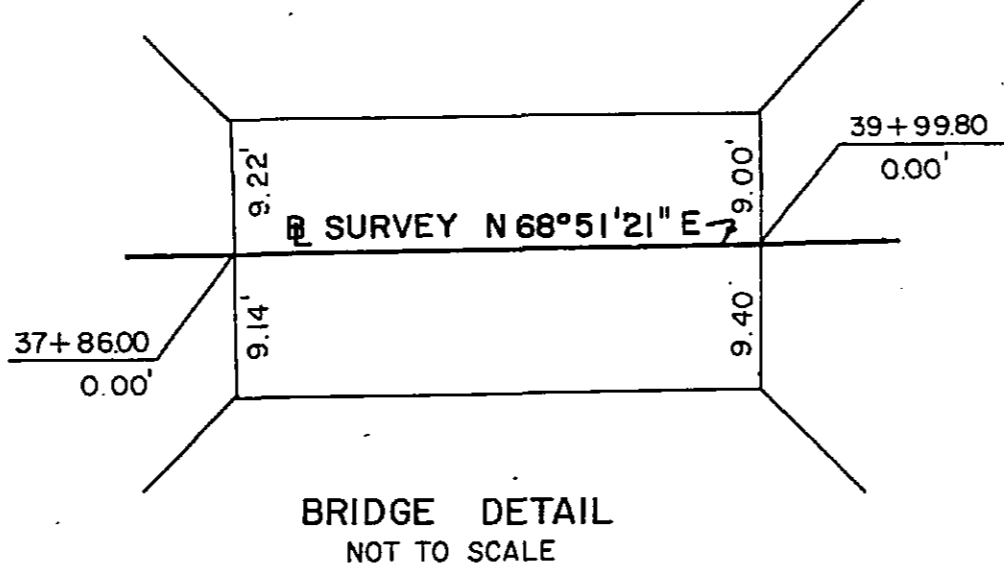
MAINT. STA.	R/W RIGHT	DATA LEFT
11+20		20.0'
11+30	25.0'	20.0'
11+39	31.0'	20.0'
14+00	30.0'	20.0'
14+40	30.0'	22.0'
14+45	29.0'	22.0'
14+50	29.0'	23.0'
15+00	28.0'	30.0'
15+84	28.0'	30.0'
16+00	27.0'	37.0'
17+00	26.0'	35.0'
18+00	26.0'	38.0'
19+00	25.0'	42.0'
20+00	25.0'	34.0'
21+00	25.0'	34.0'
25+00	25.0'	34.0'
28+00	25.0'	34.0'
30+00	25.0'	34.0'

GOMEZ LAND GRANT



END OF SURVEY
 @ STA. 59+35.28
 BRIDGE ROAD =
 @ STA. 250+00.91
 S.R. 707
 89030 MAINT. MAP

MAINT. STA.	R/W RIGHT	DATA LEFT
34+00	25.0'	36.0'
36+00	30.0'	40.0'
37+86	30.0'	40.0'
40+00	28.0'	40.0'
41+00	28.0'	40.0'
42+00	30.0'	40.0'
43+00	25.0'	40.0'
47+00	25.0'	40.0'
50+00	25.0'	44.0'
52+46	25.0'	43.0'
54+25	25.0'	46.0'
55+00		43.0'
55+21		40.0'



REFERENCE: FIELD BOOK NO. 1018532
 STATE JOB NO. 89030 A-1-A
 STATE JOB NO. 89030 A-1-A 'LEG A'
 STATE JOB NO. 89030 S.R. 707

NOTE: @ BEARING IS FROM STATE JOB NO. 89030 A-1-A

NOTE: LOT DIMENSIONS ARE PLAT DIMENSIONS

UTILITIES: FLORIDA POWER & LIGHT
 SOUTHERN BELL
 MARTIN COUNTY CABLE TV
 HOBE SOUND WATER COMPANY

"The right-of-way shown hereon is an easement of this convenience, the starting in accordance with Florida Statute 322.29 (1977) in right, title, and interest of the Florida Department of Transportation in the road, street, highway, set forth on this right-of-way map."

Recorded in Public Records of _____ County, Florida, this _____ day of _____ A. D. 19____ in Book Plat Book _____ Page _____

Clerk of Circuit Court
 County, Florida

BRIDGE ROAD - HOBE SOUND

STATE OF FLORIDA
 DEPARTMENT OF TRANSPORTATION

MAINTENANCE MAP

STATE ROAD No. 707 MARTIN COUNTY

DRAWN	GRESHAM	DATE	8-10-79	APPROVED BY	<i>[Signature]</i>	DATE	8-13-79
TRACED							
CHECKED	GRAY		8-13-79				
COMPARED							
INDEXED							

SECTION 89030 SHEET 2 OF 2