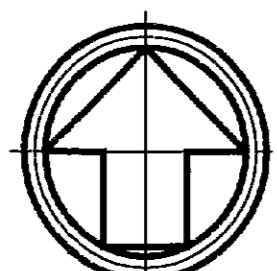


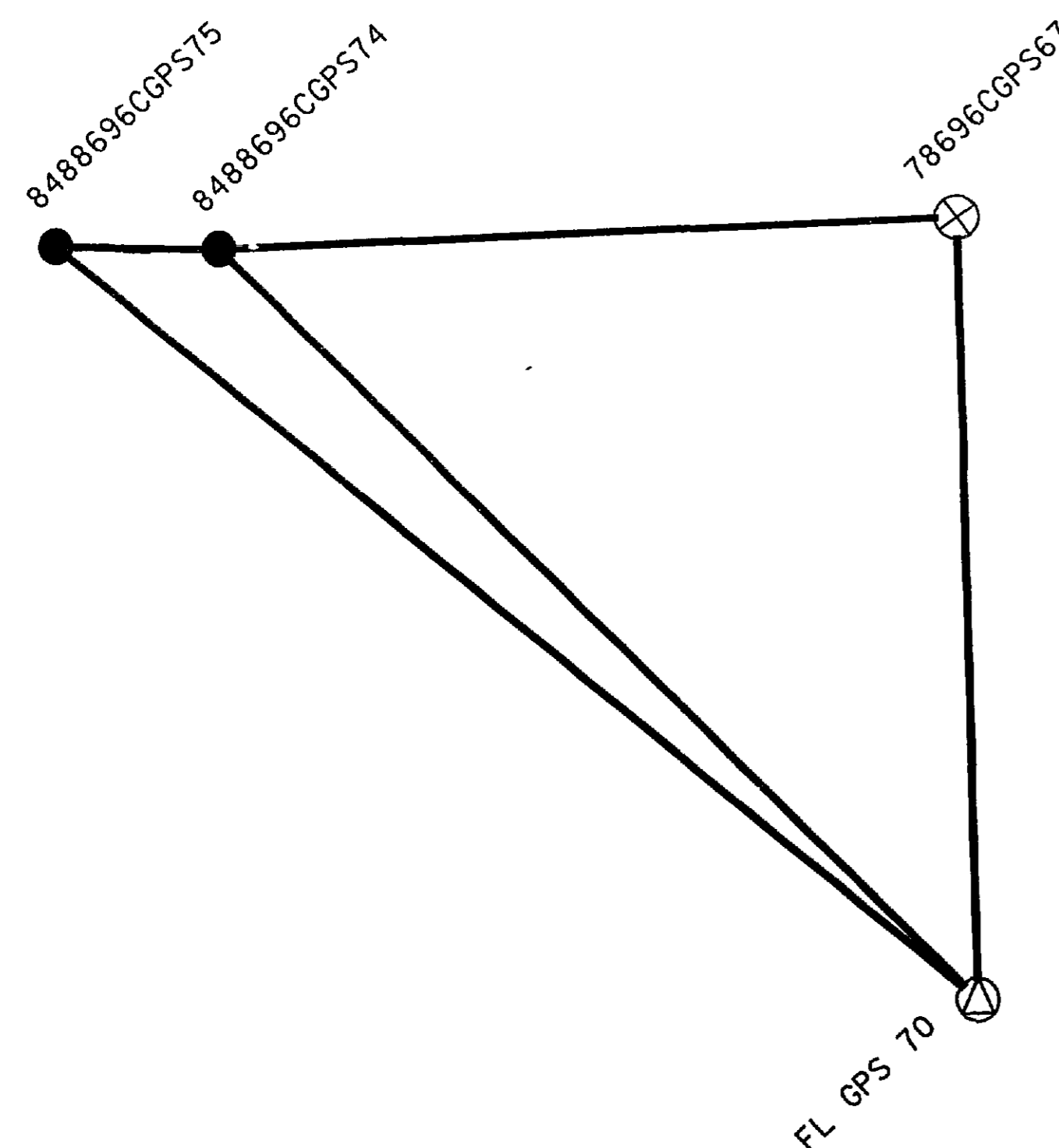
BROWARD COUNTY G.P.S. NETWORK

STATE ROAD 848 (STIRLING ROAD)

F.D.O.T. SECTION NO. 86516-1601



SCALE 1 : 30 000
METRIC MAP

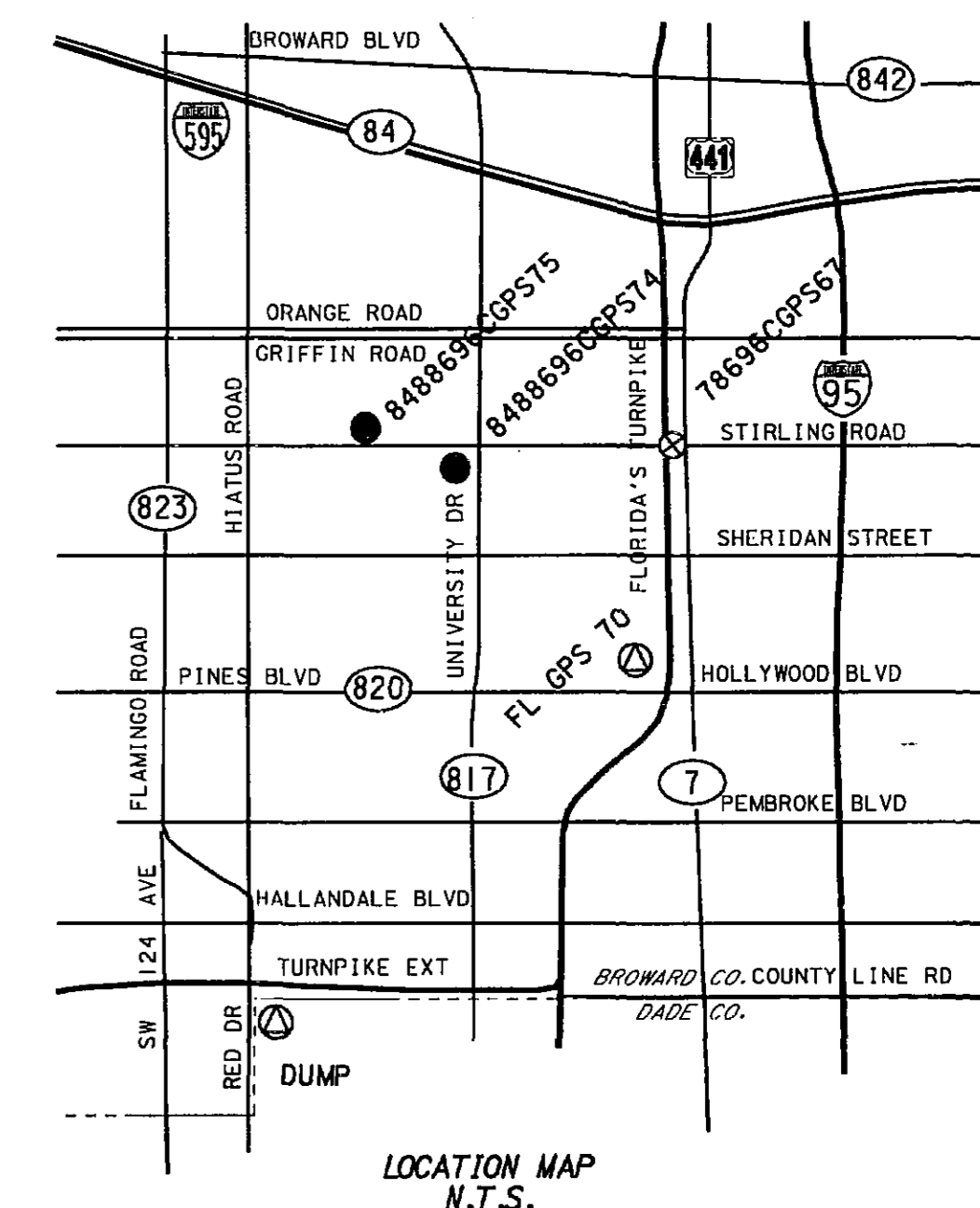


Datum: NAD83
 Zone: 0901 Florida East
 State Plane In: Meters

Coordinate Source (ASCII FILE): c:\tnl\data\proj\unvstr\netadj\coords.out

CONTROL STATIONS:	Latitude	Longitude	Northing	Easting	Convergence	Scale factor	Name
78696CGPS27	26°02'47.15610" N	80°12'51.25313" W	189995.471	278634.745	0°20'42.164"	1.000017496	78696CGPS27
FL GPS 70	26°00'37.07836" N	80°12'47.93190" W	185992.943	278751.194	0°20'42.018"	1.000017723	FL GPS 70

POINTS ESTABLISHED BY THIS SURVEY:	Latitude	Longitude	Northing	Easting	Convergence	Scale factor	Name
8488696CGPS74	26°02'42.58672" N	80°15'06.56668" W	189832.739	274873.911	0°19'42.686"	1.000010371	8488696CGPS74
8488696CGPS75	26°02'43.08541" N	80°15'36.49784" W	189843.341	274041.748	0°19'29.548"	1.000008841	8488696CGPS75



LOCATION OF POINTS:

- FL GPS 70** NGS MONUMENT AT THE INTERSECTION OF FLORIDA'S TURNPIKE AND HOLLYWOOD BOULEVARD, IN TOP OF AND 0.8 METER SOUTH OF THE NORTH END OF THE WEST CONCRETE GUARD-RAIL OF THE TURNPIKE OVERPASS OF THE BOULEVARD, 6.2 METERS WEST OF THE SOUTHBOUND LANES OF THE TURNPIKE, 2.3 METERS NORTH OF THE NORTH ABUTMENT, AND 0.8 METER ABOVE THE LEVEL OF THE TURNPIKE.
- 78696CGPS67** FDOT MONUMENT 2 METERS SOUTH OF SIDEWALK SOUTH OF STATE ROAD 7 (STIRLING ROAD), 23 METERS WEST OF SIDEWALK WEST OF N. 56th AVENUE IN A GRASS FIELD, 3/4 MILE EAST OF STATE ROAD 7 (U.S. 441)
- 8488696CGPS74** FDOT MONUMENT IN CONCRETE SIDEWALK LOCATED AT A PASTURE FENCED WITH BARBED WIRE, SOUTH AND WEST OF THE INTERSECTION OF STATE ROAD 817 (UNIVERSITY DRIVE) AND STATE ROAD 848 (STIRLING ROAD) 0.5 METERS NORTHEAST OF BACK OF WALK, 1.6 METERS SOUTHWESTERLY OF EDGE OF PAVEMENT, 3.8 METERS EAST OF CONCRETE LIGHT POLE AND 6.4 METERS NORTH OF THE END OF SIDEWALK AT A WOODEN POWER POLE
- 8488696CGPS75** FDOT MONUMENT IN GRASS FIELD, 1 METER NORTH OF BACK OF A 2 METER SIDEWALK ON THE NORTH SIDE OF STATE ROAD 848 (STIRLING ROAD) 43 METERS WEST OF SW 88th AVENUE (PINE ISLAND ROAD) 76 METERS SOUTH OF A CANAL

SURVEYOR'S NOTES:

- REPRODUCTIONS OF THIS SKETCH ARE NOT VALID UNLESS SIGNED AND EMBOSSED WITH THE SURVEYOR'S SEAL.
- THE PURPOSE OF THIS SKETCH IS TO REPRESENT RELATIVE POSITIONING LINES FIELD-MEASURED WITH G.P.S. BETWEEN STATIONS.
- RECEIVERS USED FOR G.P.S. SURVEY MEASUREMENTS: 3/TRIMBLE 4000 SE'S. POST-PROCESSING SOFTWARE USES: TRIMVEC, VERSION D. LEAST SQUARES GEODETIC ADJUSTMENT SOFTWARE USED: TRIMNET, VERSION B.
- PROCEDURES AND NETWORK DESIGN MEET OR EXCEED STANDARDS AND SPECIFICATIONS FOR USING G.P.S. RELATIVE POSITIONING TECHNIQUES AS SET FORTH BY THE FEDERAL GEODETIC CONTROL COMMITTEE (F.G.C.C.) IN THEIR MOST CURRENT PUBLICATION FOR SECOND ORDER, CLASS II HORIZONTAL CONTROL SURVEYS.
- HORIZONTAL VALUES PRESENTED ON THIS SURVEY ARE REFERENCED TO THE STATE PLANE COORDINATE SYSTEM, FLORIDA EAST ZONE, N.A.D. 1983, (ADJUSTMENT OF 1990) BASED ON FINAL PUBLISHED VALUES FOR N.G.S. HIGH-PRECISION NETWORK STATION, FL GPS 70 AND PREVIOUSLY OBSERVED POINT 78696CGPS67.

SUMMARY OF COVARIANCES

FROM	TO	AZIMUTH (n)	DISTANCE(m)	HORIZONTAL PRECISION
78696CGPS65	FL GPS 70	178°40'42"	4004.15	1:-----
78696CGPS65	8488696CGPS74	267°52'03"	3764.30	1:0000796239
78696CGPS65	8488696CGPS75	268°26'53"	4595.46	1:0000814231
FL GPS 70	8488696CGPS74	315°04'01"	5456.79	1:0001133086
FL GPS 70	8488696CGPS75	309°36'52"	6083.05	1:0001066891
8488696CGPS74	8488696CGPS75	271°03'30"	832.22	1:0000293157

LEGEND:

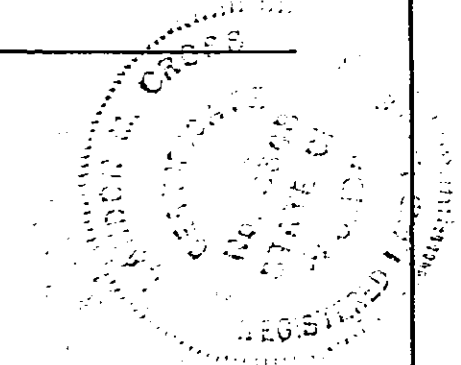
- ⊙ - N.G.S. HIGH-PRECISION NETWORK (G.P.S.)
- ⊙ - N.G.S. 1ST ORDER STATION
- ⊙ - N.G.S. 2ND ORDER STATION
- ⊙ - PREVIOUSLY OBSERVED POINTS
- ⊙ - SET BRASS DISK IN CONCRETE MONUMENT
- AZ - AZIMUTH
- DEG - DEGREE
- DIST - DISTANCE
- F.A.C. - FLORIDA ADMINISTRATIVE CODE
- FDOT - FLORIDA DEPARTMENT OF TRANSPORTATION
- FT - FEET
- GPS - GLOBAL POSITIONING SYSTEM
- JD - JULIAN DAY
- m - METER
- n - NORTH
- N.T.S. - NOT TO SCALE
- NAD - NORTH AMERICAN DATUM
- NGS - NATIONAL GEODETIC SURVEY
- PPM - PARTS PER MILLION
- USFT - UNITED STATES SURVEY FEET

CERTIFICATION

I HEREBY CERTIFY THAT THIS GEODETIC SURVEY IS TRUE AND CORRECT TO THE BEST OF MY KNOWLEDGE AND BELIEF AS SURVEYED IN THE FIELD UNDER MY SUPERVISION ON THE DATES SHOWN HEREON. I FURTHER CERTIFY THAT THIS GEODETIC SURVEY MEETS THE MINIMUM TECHNICAL STANDARDS SET FORTH IN F.A.C. CHAPTER 61G17, ADOPTED BY THE FLORIDA BOARD OF PROFESSIONAL LAND SURVEYORS, PURSUANT TO FLORIDA STATUTES CH. 472.027, SUBJECT TO THE QUALIFICATIONS NOTED HEREON.

DATE OF FIELD WORK: APRIL 3, 1996

Landon M. Cross
 BY: LONDON M. CROSS
 PROFESSIONAL LAND SURVEYOR NO. 3348



RIGHT OF WAY CONTROL SURVEY	FLORIDA DEPARTMENT OF TRANSPORTATION RIGHT OF WAY SURVEYING AND MAPPING	APPROVED BY _____ DATE _____	BY _____ DATE _____	F.A. PROJECT NO. N/A	MAPS PREPARED BY CARNAHAN/PROCTOR & ASSOC.	FIELD BOOK NO. N/A
		DISTRICT ADMINISTRATOR _____	PRELIM BANKO _____	STATE ROAD NO. 848 BROWARD COUNTY	W.P.I. NO. 4119022	SCALE: 1:30 000
		REVISION _____ BY _____ DATE _____	FINAL BANKO _____	SECTION 86516-2601	CHECKED _____ CROSS _____	SHEET 1 OF 1