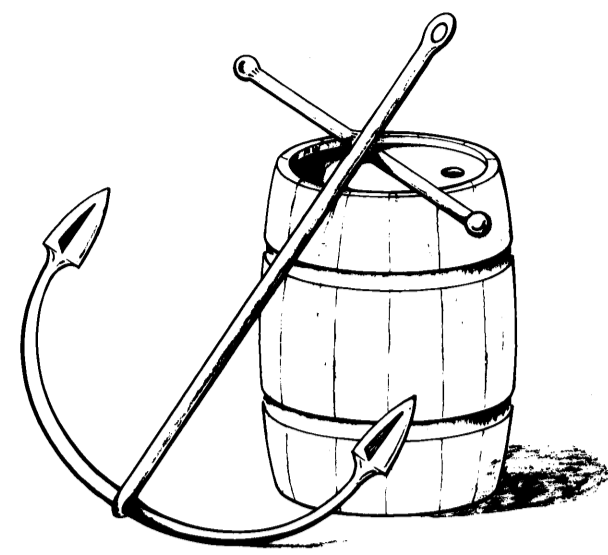
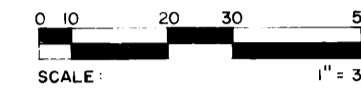


# PLAT NO. 1B SAILFISH POINT P.U.D.

BEING A RE-PLAT OF PARCEL "D" OF PLAT NO. 1 SAILFISH POINT P.U.D. AS RECORDED IN PLAT BOOK 8, PAGE 10 ET SEQUENTES OF THE PUBLIC RECORDS OF MARTIN COUNTY FLORIDA. LYING IN PART OF FRACTIONAL SECTION 8, TOWNSHIP 38 SOUTH, RANGE 42 EAST MARTIN COUNTY, FLORIDA

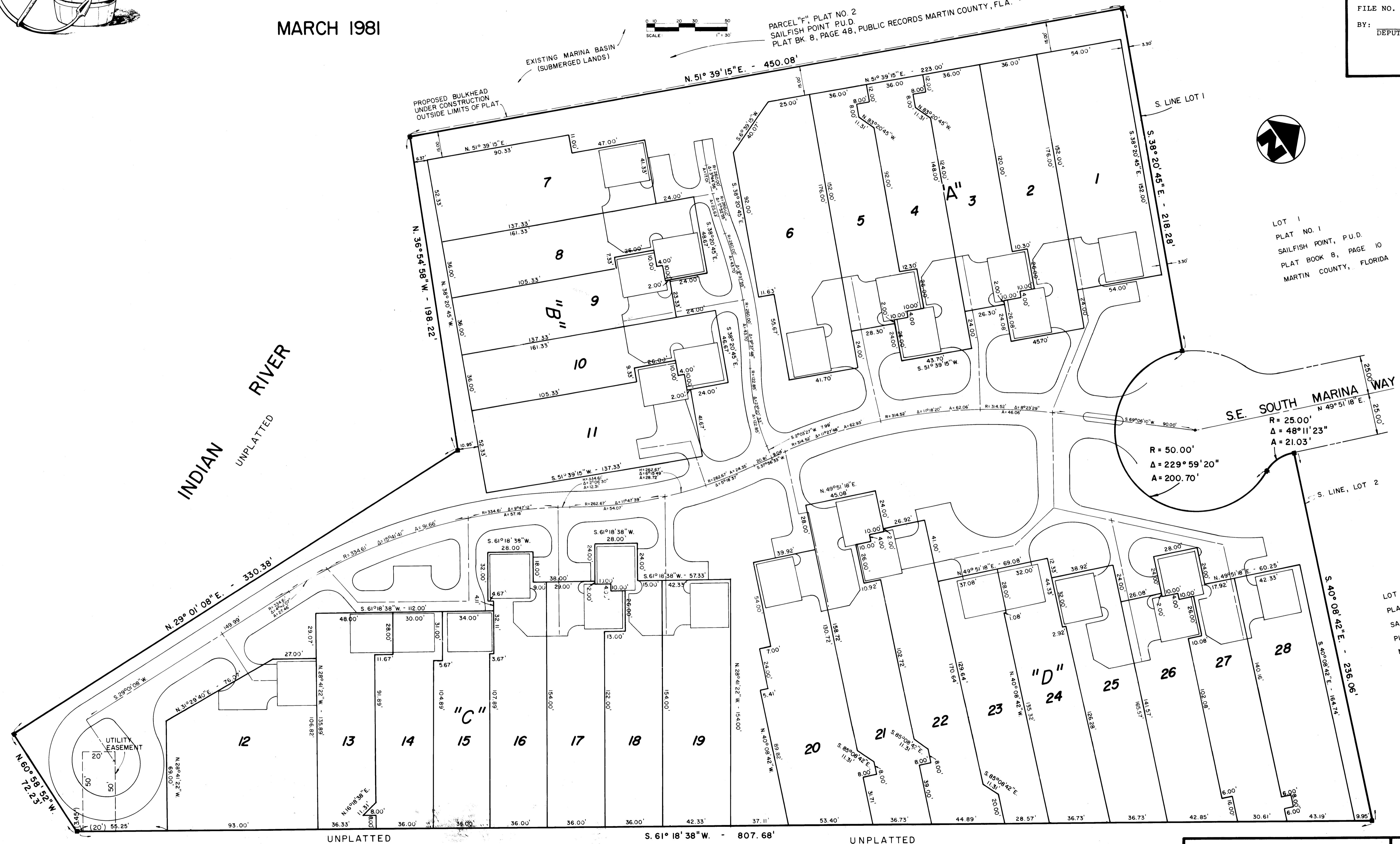


MARCH 1981

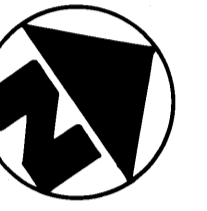


PARCEL "F", PLAT NO. 2 SAILFISH POINT P.U.D. PLAT BK. 8, PAGE 48, PUBLIC RECORDS MARTIN COUNTY, FLA.

I, LOUISE V. ISAACS, CLERK OF THE CIRCUIT COUNTY OF MARTIN COUNTY, FLORIDA, HEREBY CERTIFY THAT THIS PLAT WAS FILED FOR RECORD IN PLAT BOOK PAGE MARTIN COUNTY, FLORIDA, PUBLIC RECORDS, THIS DAY OF 1980.  
LOUISE V. ISAACS, CLERK CIRCUIT COURT MARTIN COUNTY, FLORIDA  
FILE NO. \_\_\_\_\_  
BY: \_\_\_\_\_ DEPUTY CLERK



INDIAN RIVER UNPLATTED



LOT 1  
PLAT NO. 1  
SAILFISH POINT, P.U.D.  
PLAT BOOK 8, PAGE 10  
MARTIN COUNTY, FLORIDA

LOT 2  
PLAT NO. 1  
SAILFISH POINT, P.U.D.  
PLAT BK. 8, PG. 10  
MARTIN CO., FLORIDA

NOTE: ALL BEARINGS SHOWN HEREON ARE BASED ON THE SOUTH LINE OF LOT 2, PLAT NO. 1, BEARING S. 40°08'42" E.

• - DENOTES P.C.P. (PERMANENT CONTROL POINT)  
■ - DENOTES P.R.M. (PERMANENT REFERENCE MONUMENT)

LINDAHL, BROWNING & FERRARI, INC.  
Consulting Engineers, Planners & Surveyors  
426 INDIANTOWN ROAD 951 COLORADO AVENUE  
JUPITER, FLORIDA 33458 STUART, FLORIDA 33494