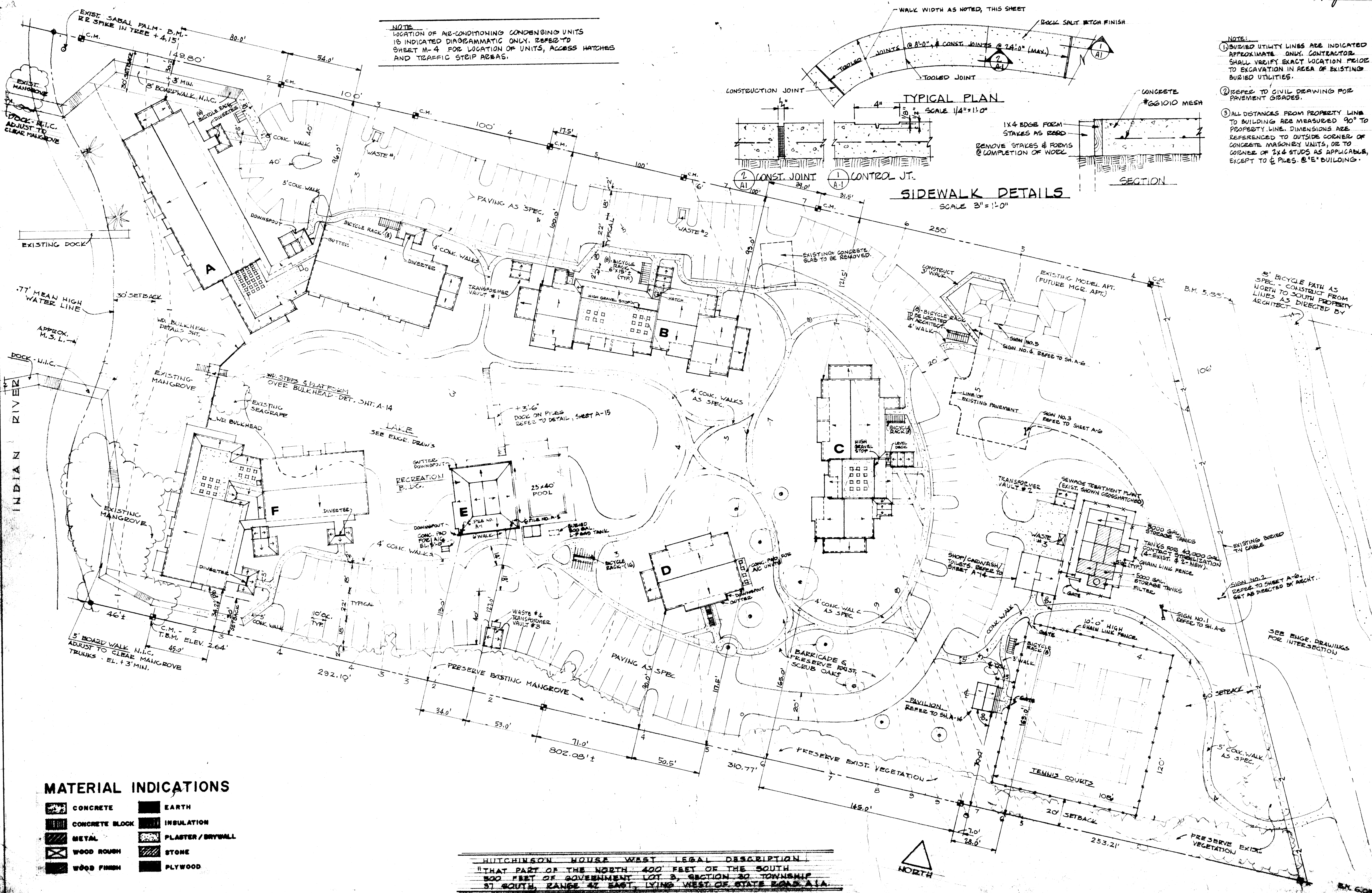
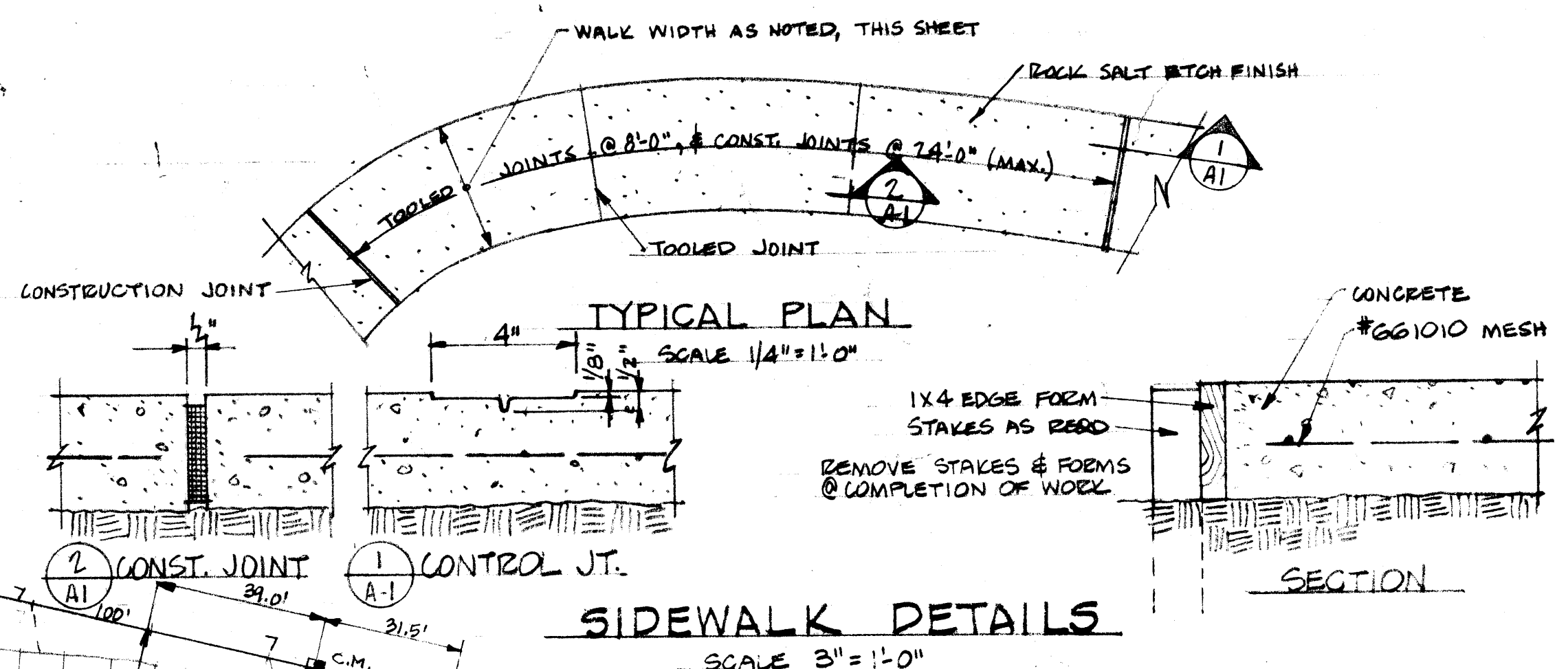


9 of 8  
 BK 1' 6662 1  
 WG BMD



**NOTE**  
 LOCATION OF AIR-CONDITIONING CONDENSING UNITS IS INDICATED DIAGRAMMATIC ONLY. REFER TO SHEET M-4 FOR LOCATION OF UNITS, ACCESS HATCHES AND TRAFFIC STEEP AREAS.



**NOTE:**  
 ① BURIED UTILITY LINES ARE INDICATED APPROXIMATELY ONLY. CONTRACTOR SHALL VERIFY EXACT LOCATION PRIOR TO EXCAVATION IN AREA OF EXISTING BURIED UTILITIES.  
 ② REFER TO CIVIL DRAWING FOR PAVEMENT GRADES.  
 ③ ALL DISTANCES FROM PROPERTY LINE TO BUILDING ARE MEASURED 90° TO PROPERTY LINE. DIMENSIONS ARE REFERENCED TO OUTSIDE CORNER OF CONCRETE MASONRY UNITS, OR TO CORNER OF 2x4 STUDS AS APPLICABLE, EXCEPT TO 6" PILES @ 'E' BUILDING.

**MATERIAL INDICATIONS**

[Symbol]	CONCRETE	[Symbol]	EARTH
[Symbol]	CONCRETE BLOCK	[Symbol]	INSULATION
[Symbol]	METAL	[Symbol]	PLASTER / BRICK WALL
[Symbol]	WOOD ROUGH	[Symbol]	STONE
[Symbol]	WOOD FINISH	[Symbol]	PLYWOOD

**HUTCHINSON HOUSE WEST LEGAL DESCRIPTION**  
 "THAT PART OF THE NORTH 400 FEET OF THE SOUTH 800 FEET OF GOVERNMENT LOT 3, SECTION 30, TOWNSHIP 37 SOUTH, RANGE 47 EAST, LYING WEST OF STATE ROAD 11A

date 10-7-74  
 comm. T-13  
 drawn C.E.B.  
 checked P.J.  
 revised  
**Hutchinson**  
**House West**  
 HUTCHINSON ISLAND • STUART • FLORIDA  
 Peter Jefferson Associates Architects/Environmental Planners  
 2740-8877 Palm City, Florida 33480 Telephone (305) 287-5755  
 Comment No. 6, R. 714 - One mile east of Stuart, Florida  
**SITE PLAN**  
 10-7-74