

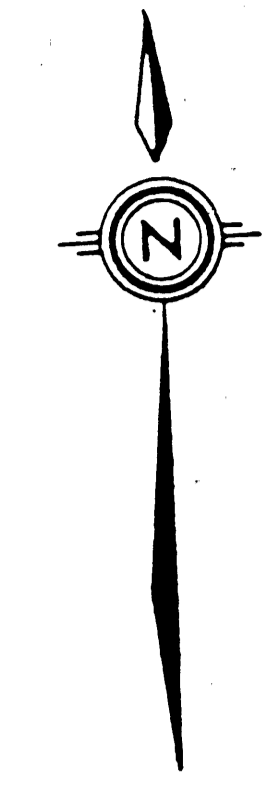
NO.	DELTA	RADIUS	LENGTH
C1	19° 38' 45"	163.81'	56.19'
C2	71° 22' 26"	17.00'	21.18'
C3	71° 22' 26"	17.00'	21.18'
C4	18° 17' 40"	295.00'	94.19'
C5	108° 17' 35"	17.00'	32.13'
C6	19° 39' 45"	228.81'	78.46'
C7	56° 31' 13"	75.00'	73.99'
C8	150° 51' 35"	25.00'	65.82'
C9	4° 46' 24"	265.71'	22.14'
C10	4° 46' 24"	265.71'	22.14'
C11	3° 27' 00"	334.91'	20.17'
C12	2° 23' 28"	558.60'	23.31'
C13	6° 48' 49"	320.00'	38.06'

PINE RIDGE AT MARTIN DOWNS-VILLAGE I

A PORTION OF MARTIN DOWNS A P.U.D.

A PORTION THEREOF BEING A REPLAT OF A PORTION OF
THE CLEVELAND ADDITION (P.B. 11, PG. 63)
SITUATE IN SECTION 18, TOWNSHIP 38 SOUTH, RANGE 41 EAST,
MARTIN COUNTY, FLORIDA.

SHEET 3 OF 4



I, LOUISE V. ISAACS, CLERK OF THE CIRCUIT COURT OF MARTIN COUNTY, FLORIDA, HEREBY CERTIFY THAT THIS PLAT WAS FILED FOR RECORD IN PLAT BOOK 9, PAGE 98, MARTIN COUNTY, FLORIDA, PUBLIC RECORDS, THIS DAY OF _____, 1985.

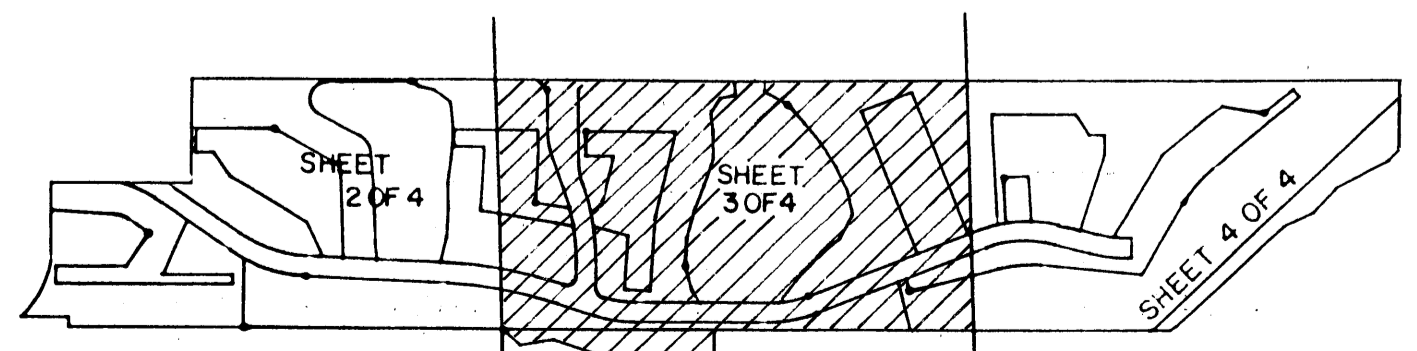
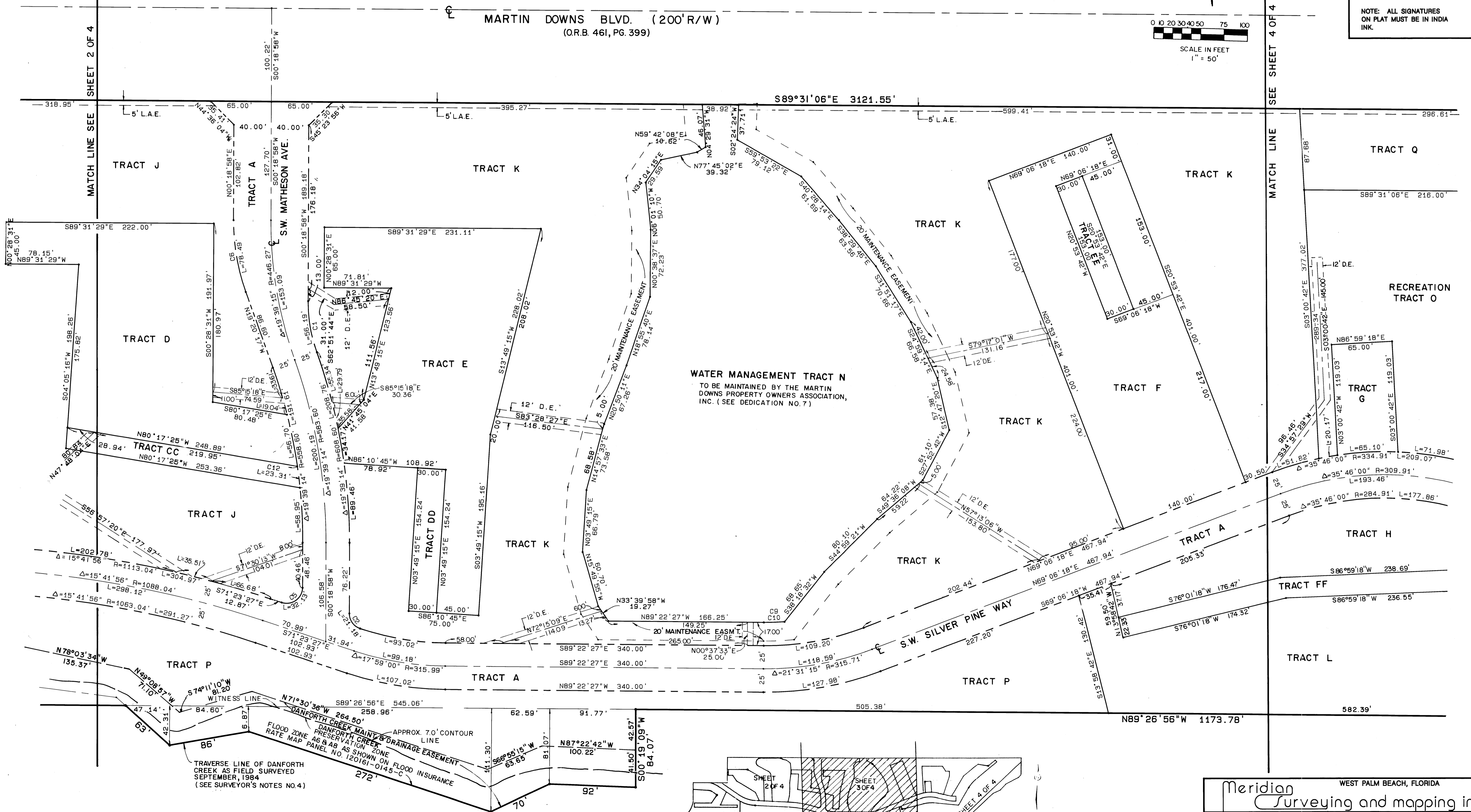
LOUISE V. ISAACS, CLERK
CIRCUIT COURT
MARTIN COUNTY, FLORIDA

BY: _____
DEPUTY CLERK

FILE NO. _____

(CIRCUIT COURT SEAL)

NOTE: ALL SIGNATURES ON PLAT MUST BE IN INDIA INK.



PALM CITY FARMS
(P.B. 6, PG. 42)

Meridian
Surveying and mapping inc.
WEST PALM BEACH, FLORIDA

DRAWN MEH/DMW	DATE 3-4-85	PINE RIDGE AT MARTIN DOWNS - VILLAGE I
CHECKED	SCALE 1"=50'	
DRAWING NO 84-PI-079		