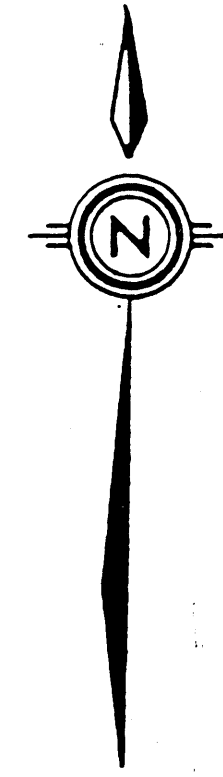


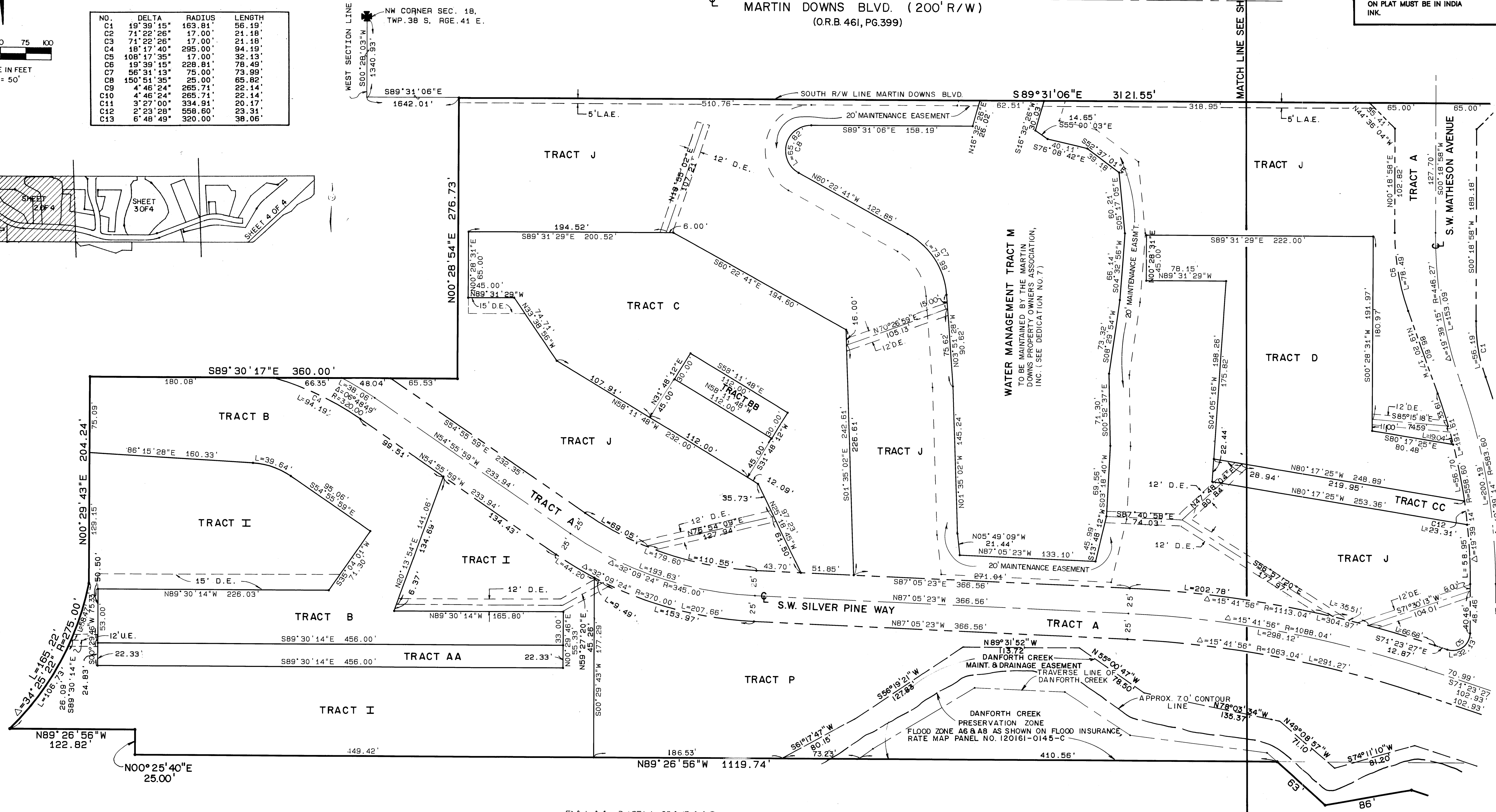
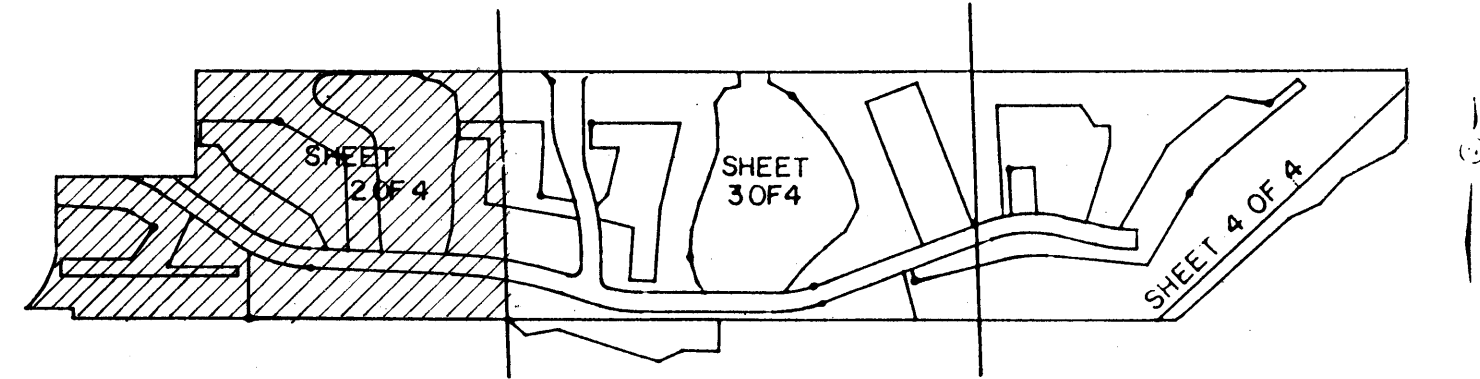
PINE RIDGE AT MARTIN DOWNS-VILLAGE I
 A PORTION OF MARTIN DOWNS A P.U.D.
 A PORTION THEREOF BEING A REPLAT OF A PORTION OF
 THE CLEVELAND ADDITION (P.B. 11, PG. 63)
 SITUATE IN SECTION 18, TOWNSHIP 38 SOUTH, RANGE 41 EAST,
 MARTIN COUNTY, FLORIDA,

SHEET 2 OF 4



0 10 20 30 40 50 75 100
 SCALE IN FEET
 1" = 50'

NO.	DELTA	RADIUS	LENGTH
C1	19° 39' 15"	163.81'	56.19'
C2	71° 22' 26"	17.00'	21.18'
C3	71° 22' 26"	17.00'	21.18'
C4	18° 17' 40"	295.00'	94.19'
C5	108° 17' 35"	17.00'	32.13'
C6	19° 39' 15"	228.81'	78.49'
C7	56° 31' 13"	75.00'	73.99'
C8	150° 51' 35"	25.00'	65.82'
C9	4° 46' 24"	265.71'	22.14'
C10	4° 46' 24"	265.71'	22.14'
C11	3° 27' 00"	334.91'	20.17'
C12	2° 23' 28"	558.60'	23.31'
C13	6° 48' 49"	320.00'	38.06'



WEST SECTION LINE
 NW CORNER SEC. 18,
 TWP. 38 S. RGE. 41 E.
 S89°31'06"E
 1642.01'

MARTIN DOWNS BLVD. (200' R/W)
 (O.R.B. 461, PG.399)

MATCH LINE SEE SHEET 30F 4

I, LOUISE V. ISAACS,
 CLERK OF THE CIRCUIT
 COURT OF MARTIN COUNTY,
 FLORIDA, HEREBY CERTIFY
 THAT THIS PLAT WAS FILED
 FOR RECORD IN PLAT BOOK
 9, PAGE 98, MARTIN
 COUNTY, FLORIDA, PUBLIC
 RECORDS, THIS DAY
 OF 1985.

LOUISE V. ISAACS, CLERK
 CIRCUIT COURT
 MARTIN COUNTY, FLORIDA

BY: _____
 DEPUTY CLERK

FILE NO. _____

(CIRCUIT COURT SEAL)

NOTE: ALL SIGNATURES
 ON PLAT MUST BE IN INK.

PALM CITY FARMS
 (PB. 6, PG. 42)

Meridian Surveying and mapping inc. WEST PALM BEACH, FLORIDA

DRAWN	MEH/DMW	DATE	3-4-85
CHECKED		SCALE	1" = 50'
DRAWING NO	84-PI-079	PINE RIDGE AT MARTIN DOWNS - VILLAGE I	