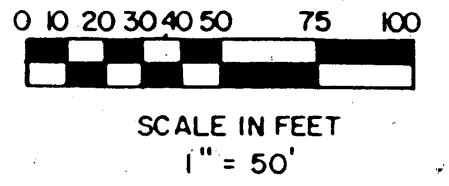
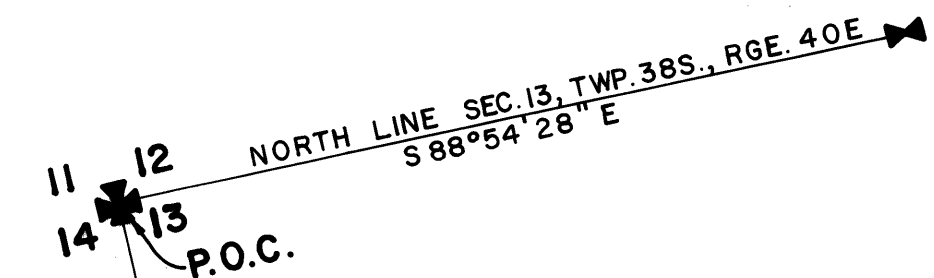


IBIS POINT

BEING PLAT NO. 13 OF MARTIN DOWNS,
 A P.U.D., LYING IN SECTION 13,
 TOWNSHIP 38 SOUTH, RANGE 40 EAST,
 MARTIN COUNTY, FLORIDA.

FEBRUARY, 1985 SHEET 2 OF 3



I, LOUISE V. ISAACS,
 CLERK OF THE CIRCUIT
 COURT OF MARTIN COUNTY,
 FLORIDA, HEREBY CERTIFY
 THAT THIS PLAT WAS FILED
 FOR RECORD IN PLAT BOOK
 9, PAGE 93, MARTIN
 COUNTY, FLORIDA, PUBLIC
 RECORDS, THIS DAY
 OF 1984.

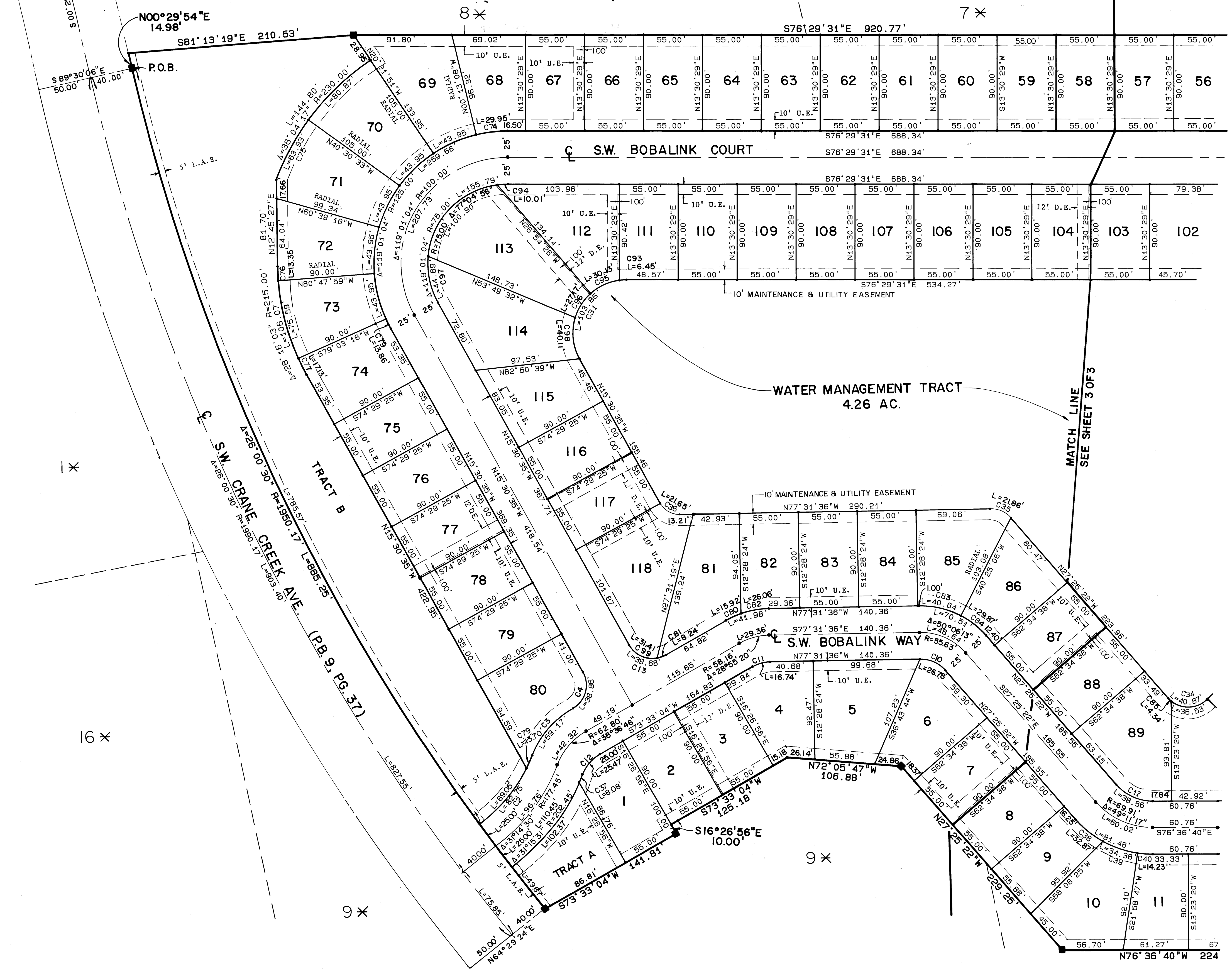
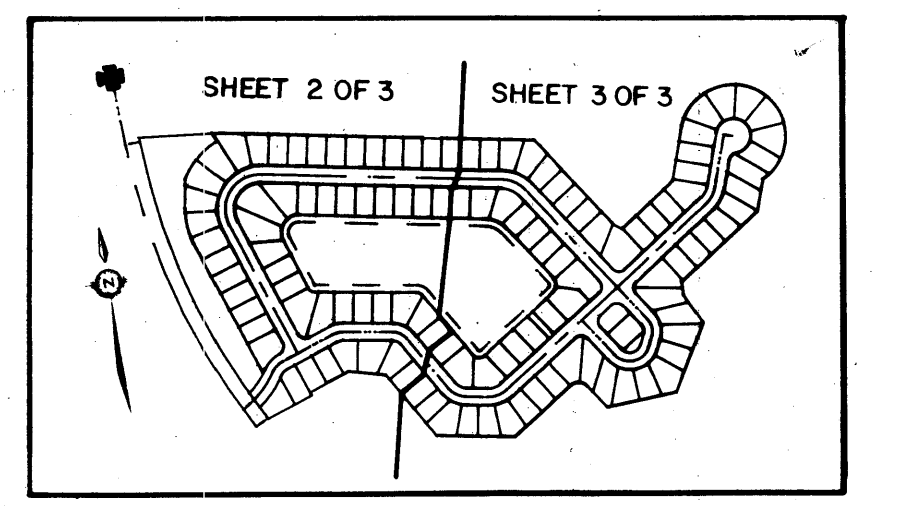
LOUISE V. ISAACS, CLERK
 CIRCUIT COURT
 MARTIN COUNTY, FLORIDA

BY: _____
 DEPUTY CLERK

FILE NO. _____

(CIRCUIT COURT SEAL)

NOTE: ALL SIGNATURES
 ON PLAT MUST BE IN INDIA
 INK.



NO.	DELTA	RADIUS	LENGTH	NO.	DELTA	RADIUS	LENGTH
C1	90°02'43"	34.97'	54.96'	C51	26°26'22"	82.22'	37.94'
C2	30°06'56"	152.45'	82.22'	C52	21°24'11"	30.74'	30.74'
C3	38°36'46"	87.80'	59.17'	C53	13°12'19"	82.22'	18.95'
C4	89°03'40"	25.00'	38.86'	C54	30°56'11"	77.16'	41.66'
C5	90°00'01"	25.00'	39.27'	C55	28°52'33"	77.16'	38.89'
C6	37°09'11"	64.25'	41.67'	C56	45°33'41"	25.00'	19.88'
C7	70°31'44"	25.00'	30.77'	C57	44°26'15"	25.00'	19.39'
C8	89°59'59"	25.00'	39.27'	C58	6°39'24"	114.26'	13.28'
C9	90°00'00"	25.00'	39.27'	C59	24°43'59"	114.26'	49.32'
C10	50°06'13"	30.63'	26.78'	C60	5°45'48"	114.26'	11.49'
C11	28°59'20"	33.16'	16.74'	C61	9°03'08"	150.00'	23.70'
C12	38°36'46"	37.80'	25.47'	C62	55°34'55"	25.00'	24.23'
C13	90°56'20"	25.00'	39.68'	C63	21°15'02"	150.00'	55.63'
C14	45°24'24"	70.61'	55.96'	C64	14°59'49"	25.00'	6.54'
C15	89°59'59"	25.00'	39.27'	C65	63°50'56"	50.00'	55.72'
C16	44°28'29"	53.27'	41.35'	C66	30°59'32"	50.00'	27.05'
C17	49°11'17"	44.91'	36.56'	C67	36°16'47"	50.00'	31.66'
C18	90°00'00"	25.00'	39.27'	C68	36°16'47"	50.00'	31.66'
C19	90°00'01"	25.00'	39.27'	C69	10°34'08"	150.00'	27.67'
C20	59°48'44"	27.16'	28.35'	C70	10°34'08"	50.00'	9.22'
C21	38°36'46"	62.80'	42.32'	C71	8°53'04"	120.81'	18.70'
C22	28°55'20"	58.16'	29.36'	C72	20°34'08"	120.81'	43.30'
C23	50°06'13"	55.63'	48.64'	C73	15°57'12"	120.81'	33.58'
C24	49°11'17"	69.91'	60.02'	C74	13°43'37"	125.00'	29.95'
C25	44°28'29"	78.27'	60.75'	C75	15°55'34"	230.00'	63.93'
C26	37°09'11"	89.26'	57.89'	C76	3°33'26"	215.00'	13.35'
C27	45°24'24"	95.61'	75.77'	C77	4°33'54"	215.00'	17.13'
C28	59°48'44"	94.16'	54.45'	C78	5°08'55"	152.45'	9.96'
C29	61°02'52"	57.22'	60.96'	C79	5°08'55"	152.45'	13.70'
C30	59°08'24"	59.46'	61.37'	C80	10°57'59"	83.16'	15.92'
C31	119°01'04"	50.00'	103.86'	C81	18°57'47"	25.00'	8.24'
C32	45°24'24"	95.00'	67.36'	C82	17°57'21"	83.16'	26.06'
C33	38°36'46"	30.00'	47.12'	C83	28°52'48"	80.53'	40.54'
C34	93°39'46"	25.00'	40.87'	C84	21°13'25"	80.53'	29.87'
C35	50°06'13"	25.00'	21.86'	C85	9°56'07"	25.00'	4.34'
C36	62°01'00"	20.00'	21.65'	C86	83°43'39"	25.00'	36.53'
C37	02°17'15"	202.45'	8.08'	C87	36°55'22"	30.00'	19.33'
C38	19°50'31"	34.91'	32.87'	C88	42°11'53"	30.00'	12.09'
C39	20°45'20"	94.91'	34.38'	C89	10°52'44"	30.00'	5.70'
C40	6°35'26"	94.91'	14.23'	C90	12°29'19"	85.00'	18.53'
C41	10°39'23"	103.27'	19.21'	C91	26°38'45"	85.00'	39.53'
C42	22°38'30"	103.27'	40.81'	C92	6°16'19"	85.00'	9.30'
C43	11°10'35"	103.27'	20.14'	C93	7°23'19"	85.00'	10.45'
C44	47°48'54"	34.97'	29.59'	C94	7°38'42"	75.00'	10.01'
C45	55°24'34"	25.00'	24.18'	C95	34°31'37"	50.00'	30.13'
C46	42°13'48"	34.97'	25.78'	C96	31°08'03"	50.00'	27.17'
C47	34°35'27"	25.00'	15.09'	C97	34°17'26"	75.00'	44.89'
C48	22°40'48"	84.45'	33.43'	C98	45°58'05"	50.00'	40.11'
C49	30°24'15"	84.45'	44.82'	C99	71°58'33"	25.00'	31.41'
C50	6°03'22"	84.45'	8.93'	C100	40°02'21"	27.16'	18.98'
				C101	13°32'32"	34.46'	8.14'

100 * DENOTES TRACT NUMBERS ACCORDING TO THE PLAT OF "PALM PALM FARMS", FILED FEBRUARY 17, 1916, AND RECORDED IN PLAT BOOK 6, PAGE 42 OF THE PUBLIC RECORDS OF PALM BEACH (NOW MARTIN) COUNTY, FLORIDA.

Meridian Surveying and mapping inc. WEST PALM BEACH, FLORIDA

DRAWN	M.E.H.	DATE	10/17/84
CHECKED	R.A.H.	SCALE	1" = 50'
DRAWING NO	83-P-120		

MARTIN DOWNS PLAT NO. 13
IBIS POINT