

A PLAT OF CLUBHOUSE COURT

BEING PLAT NO. II, OF MARTIN DOWNS, A P.U.D.
 LYING IN SEC. 14, TWP. 38 S., RGE. 40 E.
 MARTIN COUNTY, FLORIDA

JANUARY, 1985

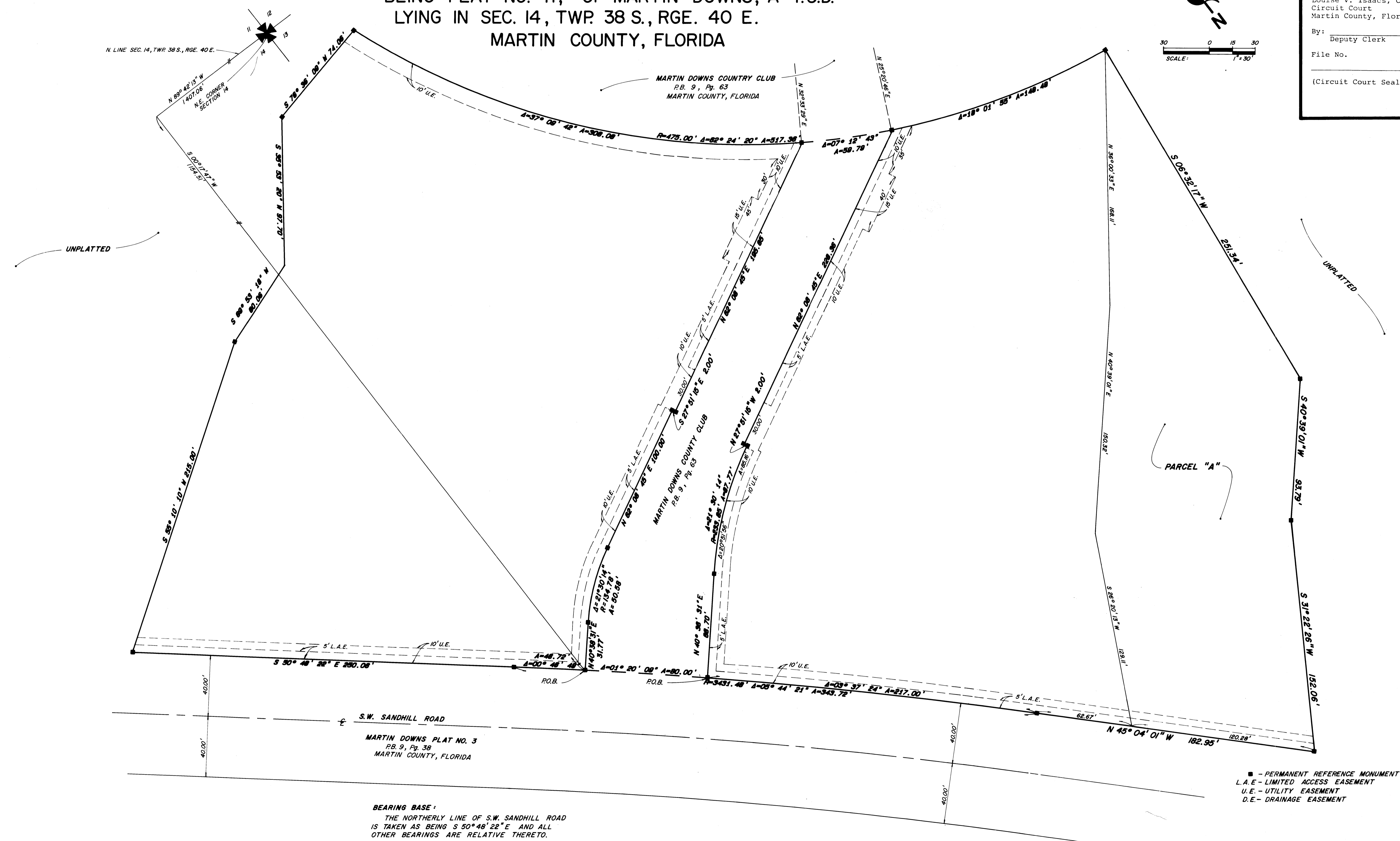
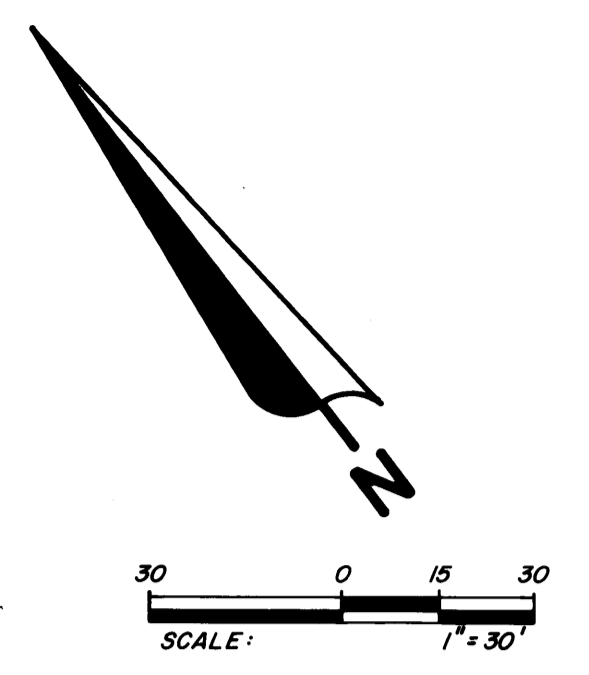
I, Louise V. Isaacs, Clerk of the Circuit Court of Martin County, Florida, hereby certify that this Plat was filed for record in Plat Book 9, Page 90, Martin County, Florida, Public Records, this day of _____, 1985.

Louise V. Isaacs, Clerk Circuit Court Martin County, Florida

By: _____ Deputy Clerk

File No. _____

(Circuit Court Seal)



BEARING BASE:
 THE NORTHERLY LINE OF S.W. SANDHILL ROAD
 IS TAKEN AS BEING S 50° 48' 22" E AND ALL
 OTHER BEARINGS ARE RELATIVE THERETO.

■ - PERMANENT REFERENCE MONUMENT
 L.A.E. - LIMITED ACCESS EASEMENT
 U.E. - UTILITY EASEMENT
 D.E. - DRAINAGE EASEMENT

LINDAHL, BROWNING, FERRARI & HELLSTROM, INC.
 Consulting Engineers, Planners & Surveyors
 JUPITER, FLORIDA STUART, FLORIDA
 FORT PIERCE, FLORIDA