

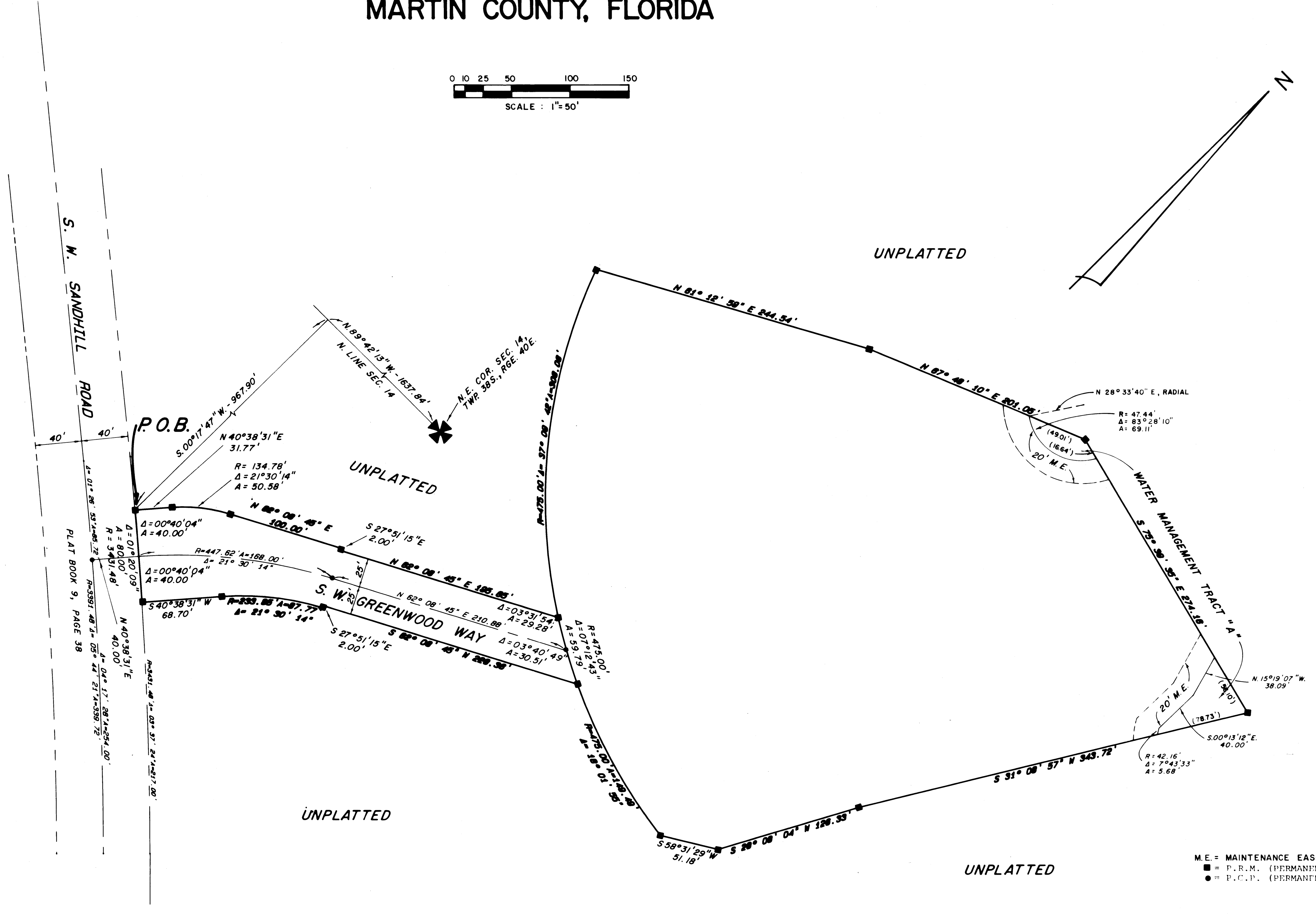
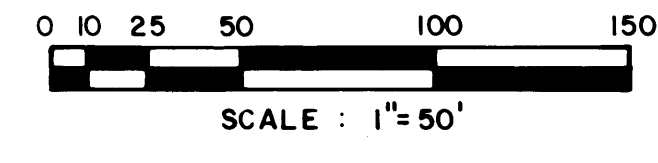
# A PLAT OF MARTIN DOWNS COUNTRY CLUB

BEING PLAT NO. 10 OF MARTIN DOWNS, A P.U.D.  
LYING IN SECTION 14, TWP. 38 S., RGE. 40 E.  
MARTIN COUNTY, FLORIDA

FEBRUARY, 1984

SHEET 2 OF 2

PLB 9  
PG 63



M.E. = MAINTENANCE EASEMENT  
■ = P.R.M. (PERMANENT REFERENCE MONUMENT)  
● = P.C.P. (PERMANENT CONTROL POINT)

Bearing Base  
The North line of Section 14, Township 38 South, Range 40 East is taken, as being N 89°42'13" W, and all other bearings are relative thereto.

LINDAHL, BROWNING, FERRARI & HELLSTROM, INC.  
Consulting Engineers, Planners & Surveyors  
JUPITER, FLORIDA    STUART, FLORIDA  
FORT PIERCE, FLORIDA