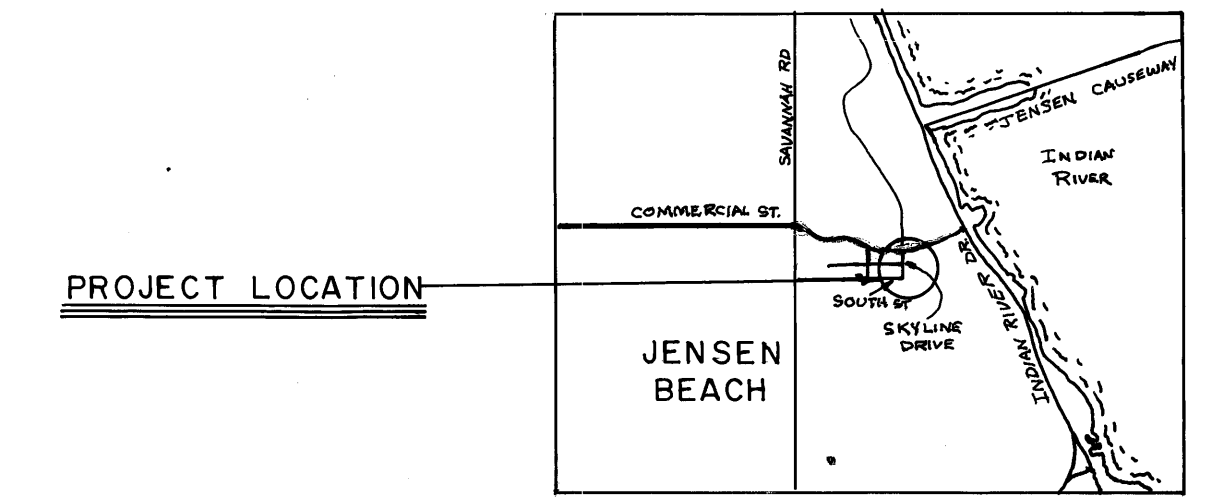
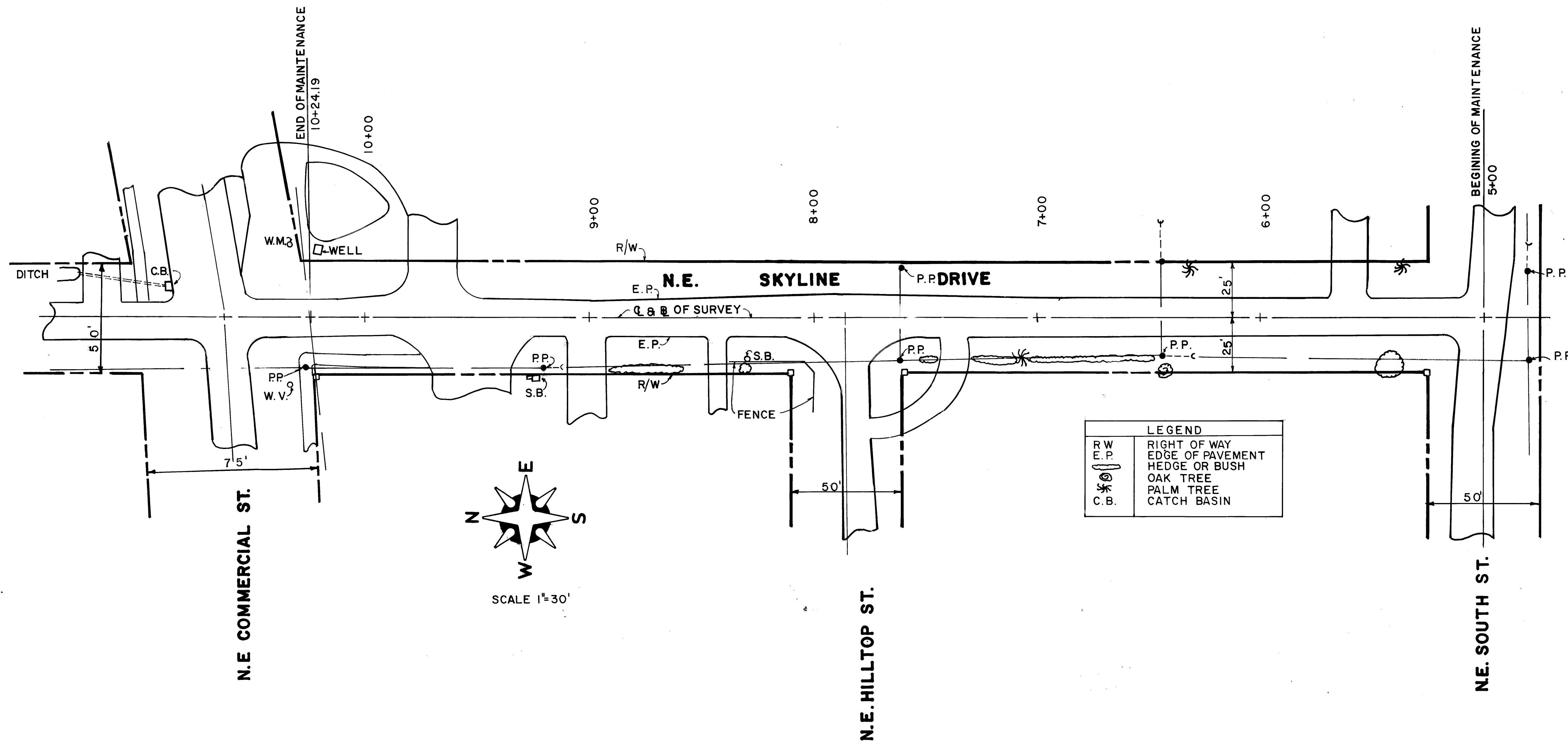


# MAINTENANCE MAP N.E. SKYLINE DRIVE



**LEGEND**

R/W	RIGHT OF WAY
E.P.	EDGE OF PAVEMENT
H/B	HEDGE OR BUSH
OAK	OAK TREE
PALM	PALM TREE
C.B.	CATCH BASIN

**MAINTENANCE R/W DATA**

R/W	E.P.	B STA.	E.P.	R/W
25.0	8.75	6+00	8.29	25.0
25.0	8.50	7+00	8.35	25.0
—	—	8+00	9.62	25.0
25.0	8.55	9+00	7.75	25.0
25.0	8.48	10+00	9.25	25.0

## AFFIDAVIT

STATE OF FLORIDA  
COUNTY OF MARTIN

BEFORE ME, THE UNDERSIGNED AUTHORITY, DULY AUTHORIZED IN THE STATE AND COUNTY AFORESAID TO ADMINISTER OATHS AND TAKE ACKNOWLEDGEMENTS, PERSONALLY APPEARED C.E. RAULERSON, AS ROAD SUPERINTENDENT, WHO, AFTER BEING DULY SWORN, DEPOSES AND SAYS ON OATH AS FOLLOWS:

1. I, THE UNDERSIGNED, BEING COUNTY ROAD SUPERINTENDENT OF MARTIN COUNTY, FLORIDA, AND AS SUCH A DULY QUALIFIED EMPLOYEE OF SAID MARTIN COUNTY, DO AVER THAT I AM THOROUGHLY FAMILIAR WITH ALL OF THE ROADS IN MARTIN COUNTY, FLORIDA AND WITH THE PROGRAM OF MAINTENANCE AND IMPROVEMENT THEREOF. THAT I HAVE BEEN ASSOCIATED IN PRESENT OR SIMILAR CAPACITY ON ROAD PROGRAMS IN SAID COUNTY FOR A PERIOD IN EXCESS OF 19 YEARS.

2. THAT TO MY PERSONAL KNOWLEDGE AND OBSERVATION THE ROAD KNOWN AND DESCRIBED AS N.E. SKYLINE DRIVE ALL LYING SOUTH OF COMMERCIAL STREET ALL WITHIN MARTIN COUNTY AS LOCATED AS SHOWN ON THE ABOVE MAP WAS CONSTRUCTED BY AND HAS BEEN MAINTAINED AND REPAIRED CONTINUOUSLY AND UNINTERRUPTED FOR 20 YEARS BY THE MARTIN COUNTY ROAD DEPARTMENT. FURTHER THAT THE MAINTENANCE OF SAID PORTION N.E. SKYLINE DRIVE CONSIST OF MOWING, PERIODIC MAINTENANCE OF SWALE, GRADING OF SHOULDER, AND THE MAINTENANCE OF THE ASPHALTIC PAVEMENT

FURTHER AFFIANT SAYETH NOT.  
THIS 17th DAY OF JAN, 1983.

*C.E. Raulerson*  
ROAD SUPERINTENDANT

## ACKNOWLEDGEMENT

SWORN TO AND SUBSCRIBED BEFORE ME THIS 17th DAY OF JANUARY, 1983 BY C.E. RAULERSON AS SUPERINTENDENT, AT STUART, MARTIN COUNTY, FLORIDA. WITNESS MY HAND AND OFFICIAL SEAL IN THE COUNTY AND STATE AFORESAID THIS 17th DAY OF JANUARY, 1983

*Harry R. Sweet*  
NOTARY PUBLIC, STATE OF FLORIDA AT LARGE  
MY COMMISSION EXPIRES: JULY 6, 1985

## DEDICATION

PURSUANT TO SECTION 95.361 (1), FLORIDA STATUTES, (1977) THE PORTIONS OF N.E. SKYLINE DRIVE BETWEEN STATIONS 5+00 AND 10+24.19 AND BETWEEN THE MAINTENANCE RIGHT-OF-WAY LINES, ALL WITHIN MARTIN COUNTY AND LOCATED AS SHOWN ON THE ABOVE MAP, SHALL HERE-AFTER BE DEEMED DEDICATED TO THE PUBLIC AND ALL RIGHT, TITLE, EASEMENTS AND APPURTENANCES ARE HEREBY VESTED IN MARTIN COUNTY, FLORIDA.

CERTIFIED BY: BOARD OF COUNTY COMMISSIONERS

*Louise V. Isaacs*  
LOUISE V. ISAACS, CLERK  
By: *Sherrri-M King*

BY: *Sherrri-M King*  
SHERRI-M KING CHAIRMAN

## ACCEPTANCE

ACCEPTED FOR FILES AND RECORDED IN THE PUBLIC RECORDS OF MARTIN COUNTY, FLORIDA. THIS 15th DAY OF February A.D. 1983 IN PLAT BOOK 9 PAGE 30.

*Louise V. Isaacs*  
CLERK OF CIRCUIT COURT OF MARTIN COUNTY, FLORIDA  
By *Charlotte Bulkey, D.C.*

File # 46629

## SURVEYOR'S CERTIFICATION

I HEREBY CERTIFY THAT THE SURVEY INFORMATION SHOWN HEREON IS A CORRECT REPRESENTATION OF A SURVEY MADE UNDER MY DIRECTION AND THAT IT IS CORRECT TO THE BEST OF MY KNOWLEDGE AND BELIEF.

*Henry R. Canalizo*  
HENRY R. CANALIZO  
MARTIN COUNTY SURVEYOR  
FLORIDA CERTIFICATE NO. 1703

**Martin County Engineering Dept.**  
P.O. BOX 626 STUART, FLORIDA 33495

scale 1" = 30'	drawn by <i>ET</i>
date 01-13-83	
MAINTENANCE MAP SKYLINE DRIVE	D-122 S