

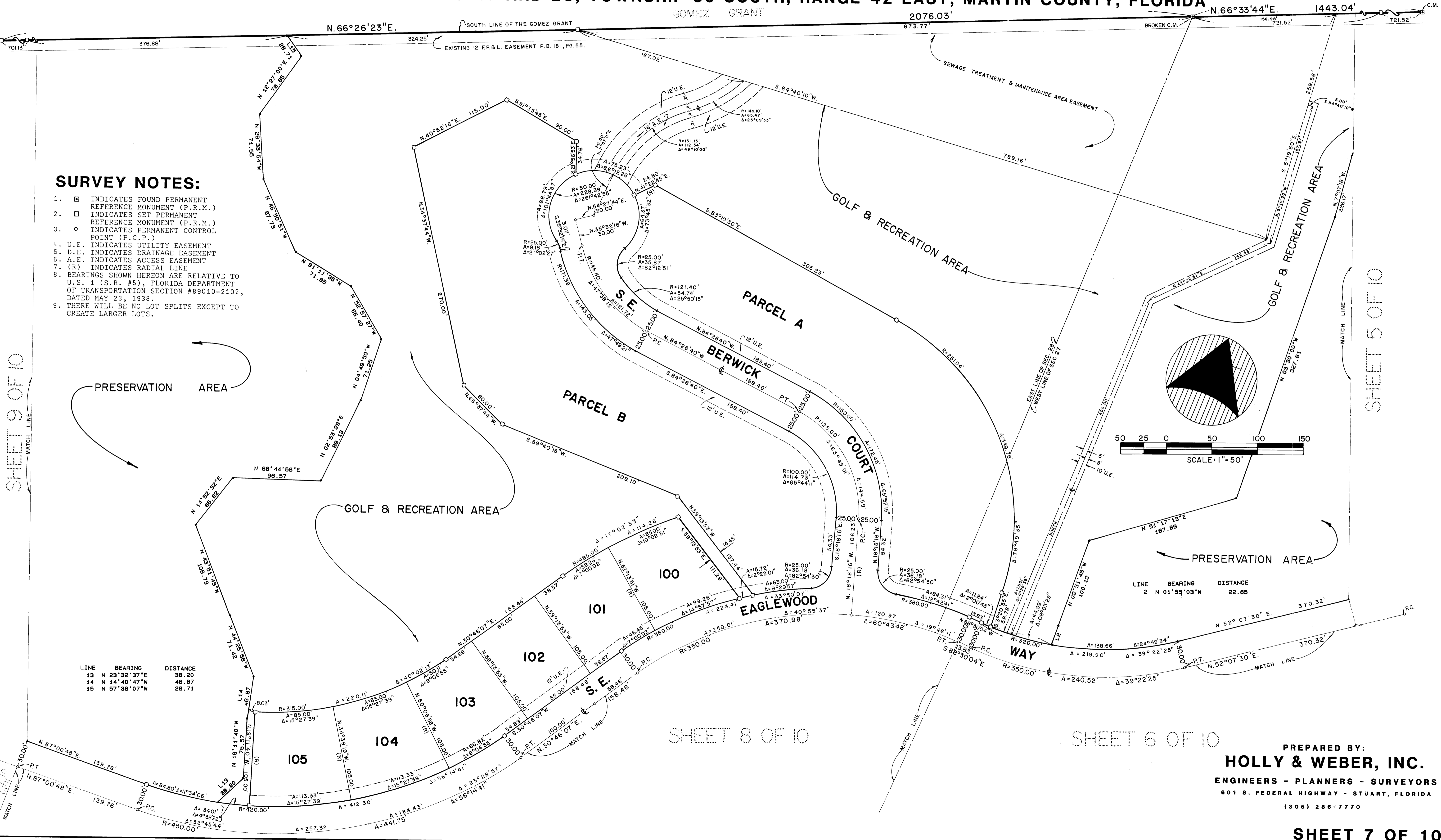
EAGLEWOOD, P.U.D.

BEING A PART OF SECTIONS 27 AND 28, TOWNSHIP 39 SOUTH, RANGE 42 EAST, MARTIN COUNTY, FLORIDA

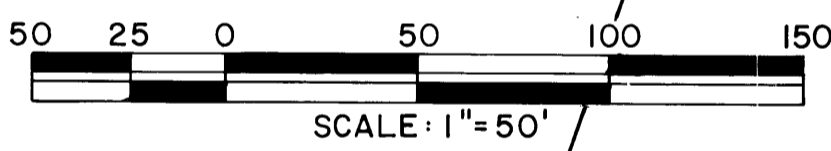
PL 9
 PG 26

SURVEY NOTES:

- INDICATES FOUND PERMANENT REFERENCE MONUMENT (P.R.M.)
- INDICATES SET PERMANENT REFERENCE MONUMENT (P.R.M.)
- INDICATES PERMANENT CONTROL POINT (P.C.P.)
- U.E. INDICATES UTILITY EASEMENT
- D.E. INDICATES DRAINAGE EASEMENT
- A.E. INDICATES ACCESS EASEMENT
- (R) INDICATES RADIAL LINE
- BEARINGS SHOWN HEREON ARE RELATIVE TO U.S. 1 (S.R. #5), FLORIDA DEPARTMENT OF TRANSPORTATION SECTION #89010-2102, DATED MAY 23, 1938.
- THERE WILL BE NO LOT SPLITS EXCEPT TO CREATE LARGER LOTS.



LINE	BEARING	DISTANCE
13	N 23°32'37"E	38.20
14	N 14°40'47"W	46.87
15	N 57°38'07"W	28.71



LINE	BEARING	DISTANCE
2	N 01°55'03"W	22.85

SHEET 8 OF 10

SHEET 6 OF 10

PREPARED BY:
HOLLY & WEBER, INC.
 ENGINEERS - PLANNERS - SURVEYORS
 601 S. FEDERAL HIGHWAY - STUART, FLORIDA
 (305) 286-7770