

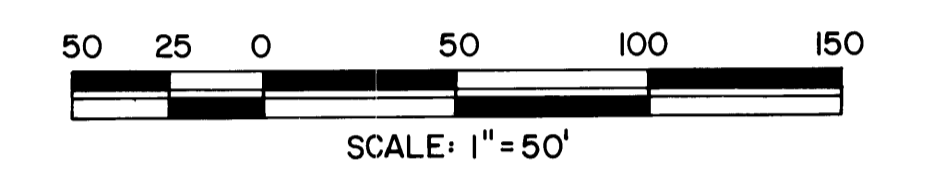
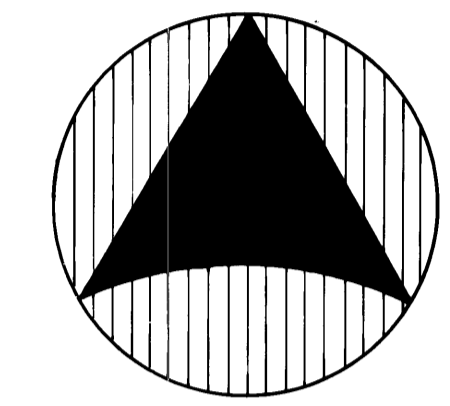
PLB 9
 Pg 26

EAGLEWOOD, P.U.D.

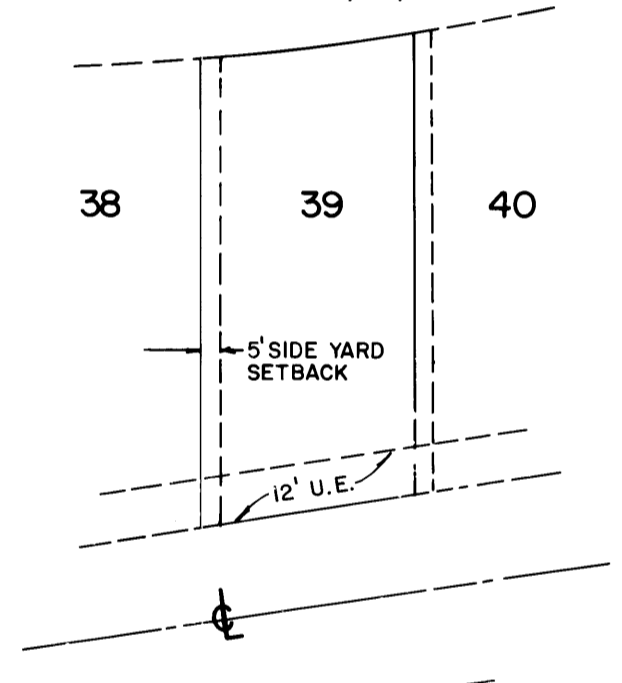
BEING A PART OF SECTIONS 27 AND 28, TOWNSHIP 39 SOUTH,
 RANGE 42 EAST, MARTIN COUNTY, FLORIDA

SHEET 3 OF 10

PREPARED BY:
HOLLY & WEBER, INC.
 ENGINEERS - PLANNERS - SURVEYORS
 601 S. FEDERAL HIGHWAY - STUART, FLORIDA
 (305) 286-7770



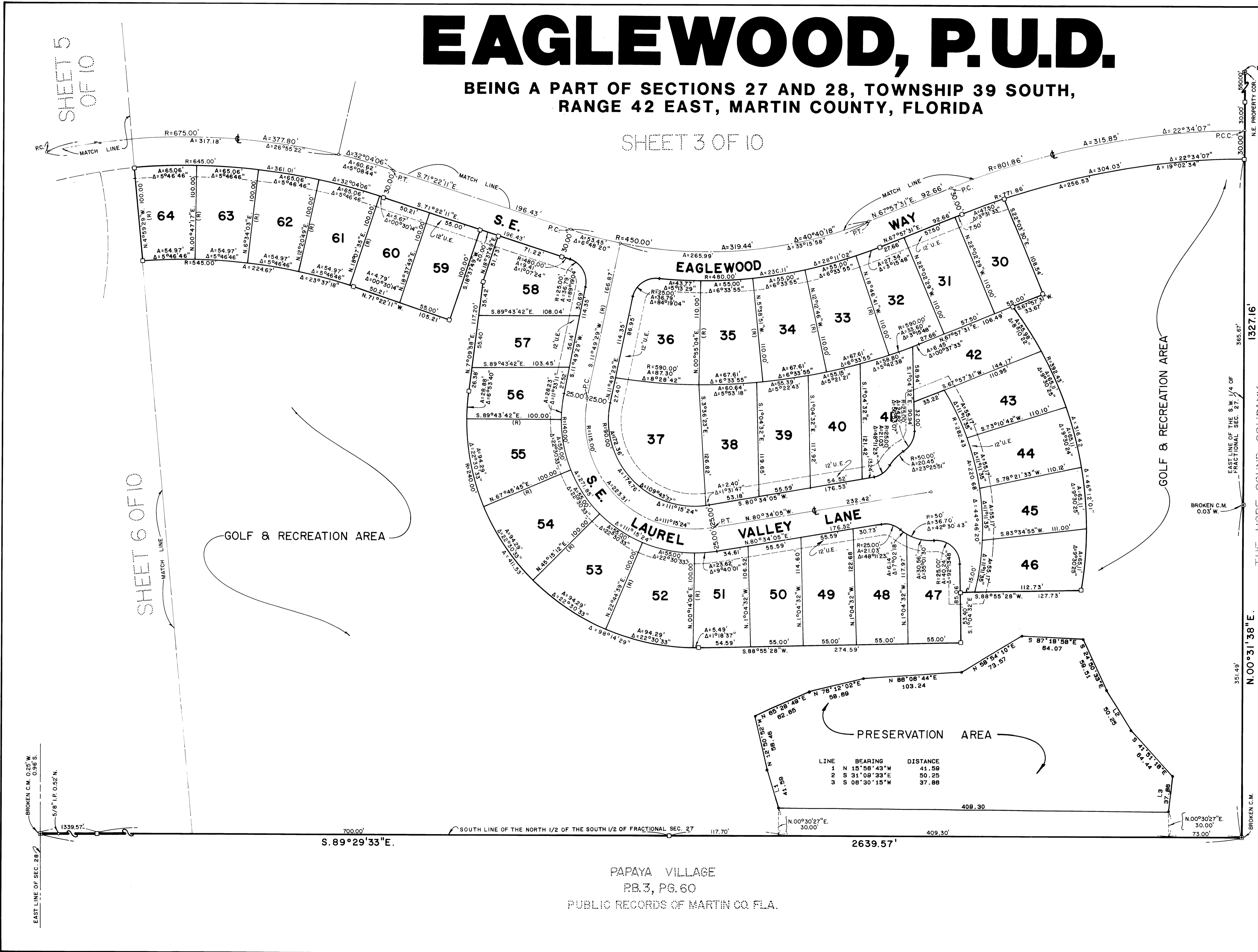
TYPICAL 5' SIDE YARD SETBACK ON LEFT
 OF LOTS AS FOLLOWS: 38, 39, 40, 41, 42,
 43, 44, 45 & 46



TYPICAL 5' SIDE YARD SETBACK ON RIGHT
 OF LOTS AS FOLLOWS: 31, 32, 33, 34, 35, 47,
 48, 49, 50, 51, 52, 53, 54, 55, 56, 57, 59, 60, 61,
 62, 63 & 64

SURVEY NOTES:

1. INDICATES FOUND PERMANENT REFERENCE MONUMENT (P.R.M.)
2. INDICATES SET PERMANENT REFERENCE MONUMENT (P.R.M.)
3. INDICATES PERMANENT CONTROL POINT (P.C.P.)
4. U.E. INDICATES UTILITY EASEMENT
5. D.E. INDICATES DRAINAGE EASEMENT
6. A.E. INDICATES ACCESS EASEMENT
7. (R) INDICATES RADIAL LINE
8. BEARINGS SHOWN HEREON ARE RELATIVE TO U.S. 1 (S.R. #5), FLORIDA DEPARTMENT OF TRANSPORTATION SECTION #89010-2102, DATED MAY 23, 1938.
9. THERE WILL BE NO LOT SPLITS EXCEPT TO CREATE LARGER LOTS.



LINE	BEARING	DISTANCE
1	N 15°58'43"W	41.59
2	S 31°09'33"E	50.25
3	S 08°30'15"W	37.88

PAPAYA VILLAGE
 PB.3, PG.60
 PUBLIC RECORDS OF MARTIN CO. FLA.

SHEET 5
 OF 10

SHEET 6 OF 10

GOLF & RECREATION AREA

PRESERVATION AREA

GOLF & RECREATION AREA

THE HOBE SOUND COMPANY
 UNPLATTED

BROKEN C.M. 0.25' W. 0.58' S.
 5/8" I.P. 0.52' N.
 EAST LINE OF SEC. 28

BROKEN C.M. 30.00' N.E. PROPERTY COR.
 1327.16'
 365.67'
 EAST LINE OF THE S.W. 1/4 OF FRACTIONAL SEC. 27
 BROKEN C.M. 0.03' W.
 351.49'
 N.00°31'38"E.

S. 89°29'33"E.

2639.57'

SHEET 3 OF 10