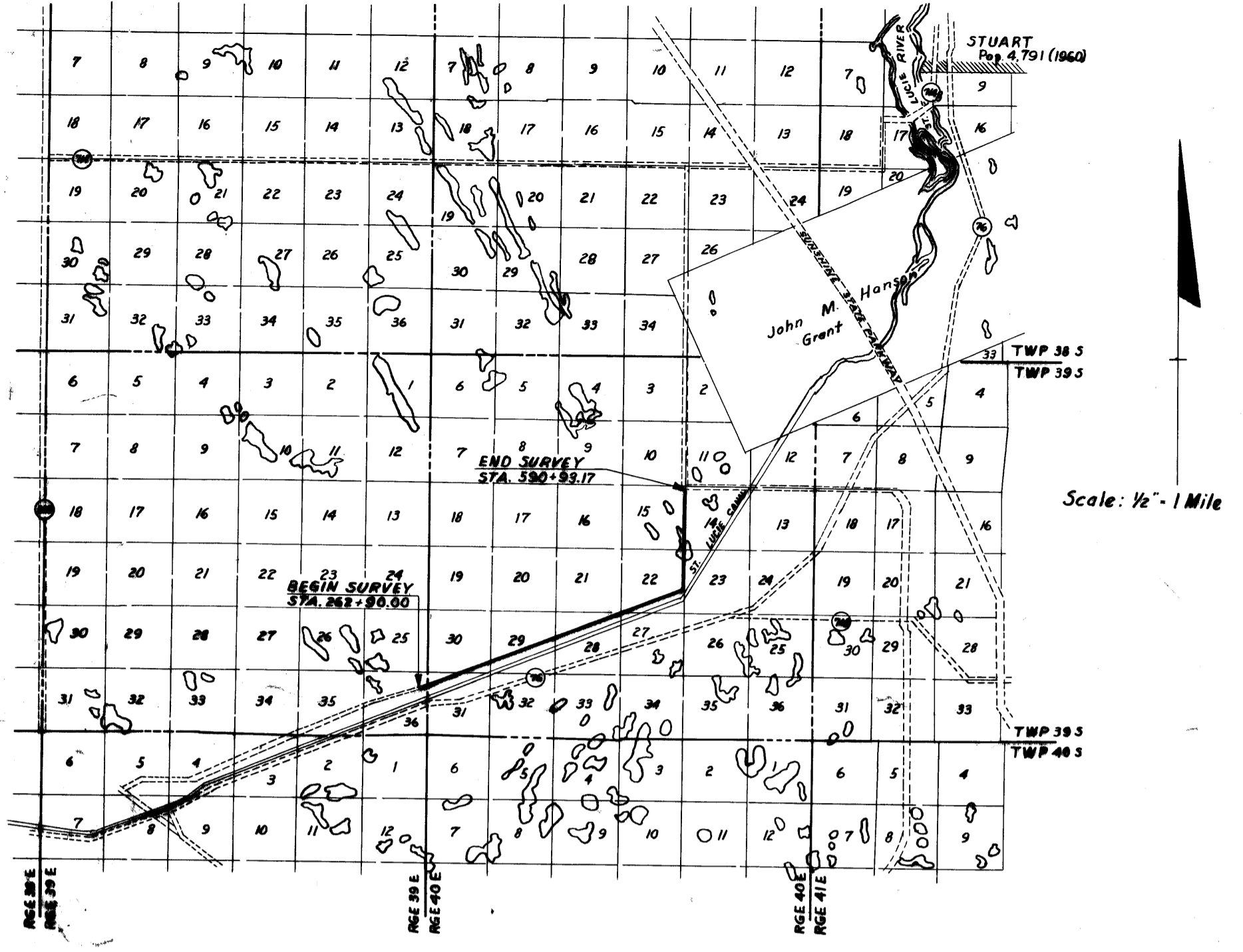
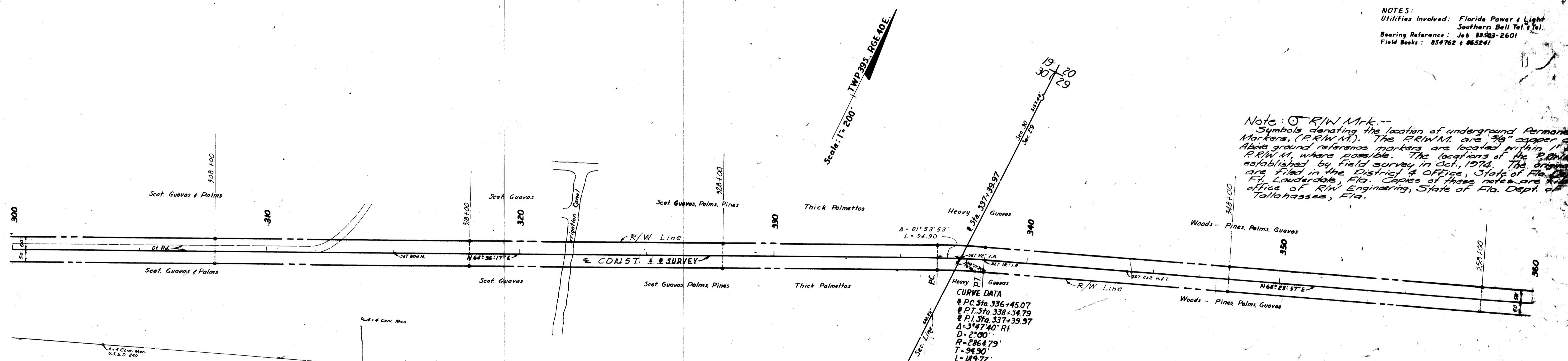
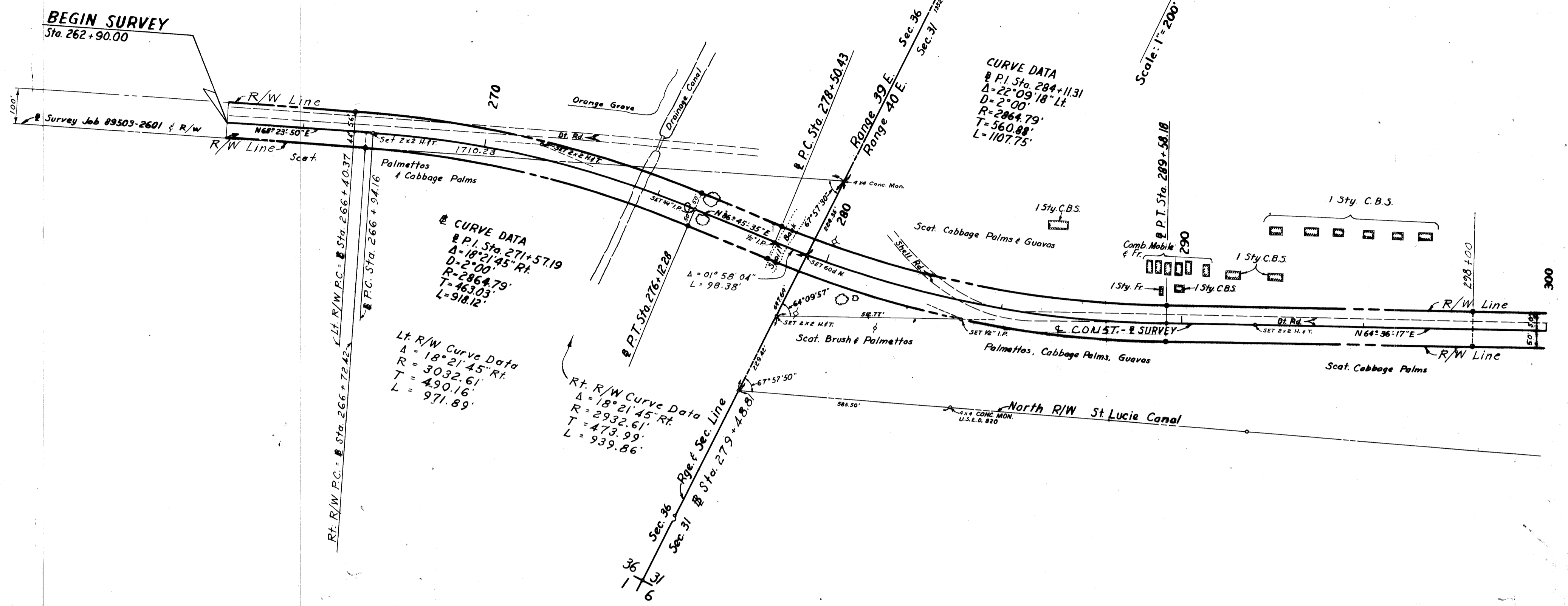


FED. ROAD DIV. No.	STATE	PROJECT No.	FISCAL YEAR	SHEET No.
3	FLA.	89503-2602	'68	1



LOCATION MAP

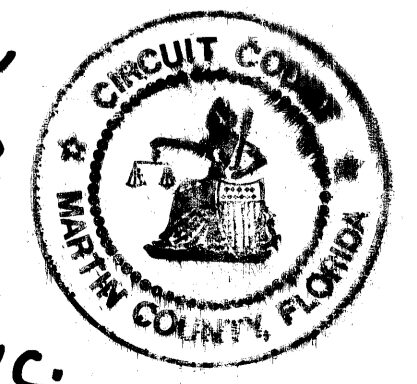


NOTES:
 Utilities Involved: Florida Power & Light
 Southern Bell Tel. & Tel.
 Bearing Reference: Job 89503-2601
 Field Books: 854762 & 865241

Note: \odot R/W Mark.--
 Symbols denoting the location of underground Permanent Reference Markers (P.R.W.M.). The P.R.W.M. are 3/8" copper caps set in concrete. Above ground reference markers are located within 11' of the P.R.W.M. where possible. The locations of the P.R.W.M. are established by field survey in Oct., 1974. The original notes are filed in the District Office, State of Florida, Ft. Lauderdale, Fla. Copies of these notes are filed in the office of R/W Engineering, State of Fla. Dept. of Transportation, Tallahassee, Fla.

This right-of-way map when recorded is an instrument of title conveyance, transferring in accordance with Florida Statutes 337.29 (1977) all right, title, and interest of the Florida Department of Transportation in the road, street, highway, set forth on this map to MARTIN County.

Recorded in Public Records of Martin County, Florida, this day of DEC 1978 in Plat Book 9 Page 23



Louis V. Deane
 Clerk of Circuit Court
 Martin County, Florida
 By Charlotte Busby A.C.

CITRUS BOULEVARD
 STATE OF FLORIDA
 STATE ROAD DEPARTMENT
RIGHT OF WAY MAP
 STATE ROAD No. 5-726 MARTIN

Drawn	Crimmins	June '68	Approved	[Signature]
Traced	Griffin	June '68		
Checked				

SECTION 89503-2602 SHEET

file # 461183