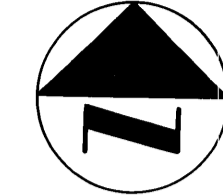
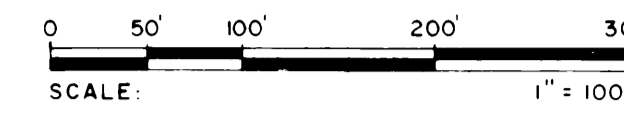


# A PLAT OF STUART WEST PHASE II

BEING A PORTION OF SECTION ONE  
TOWNSHIP 38 SOUTH, RANGE 39 EAST  
MARTIN COUNTY, FLORIDA

SEPTEMBER, 1982 46



SURVEYORS NOTES:

MONUMENTATION  
 ■ = DENOTES PERMANENT REFERENCE MONUMENT (P.R.M.)  
 ● = DENOTES PERMANENT CONTROL POINT (P.C.P.)

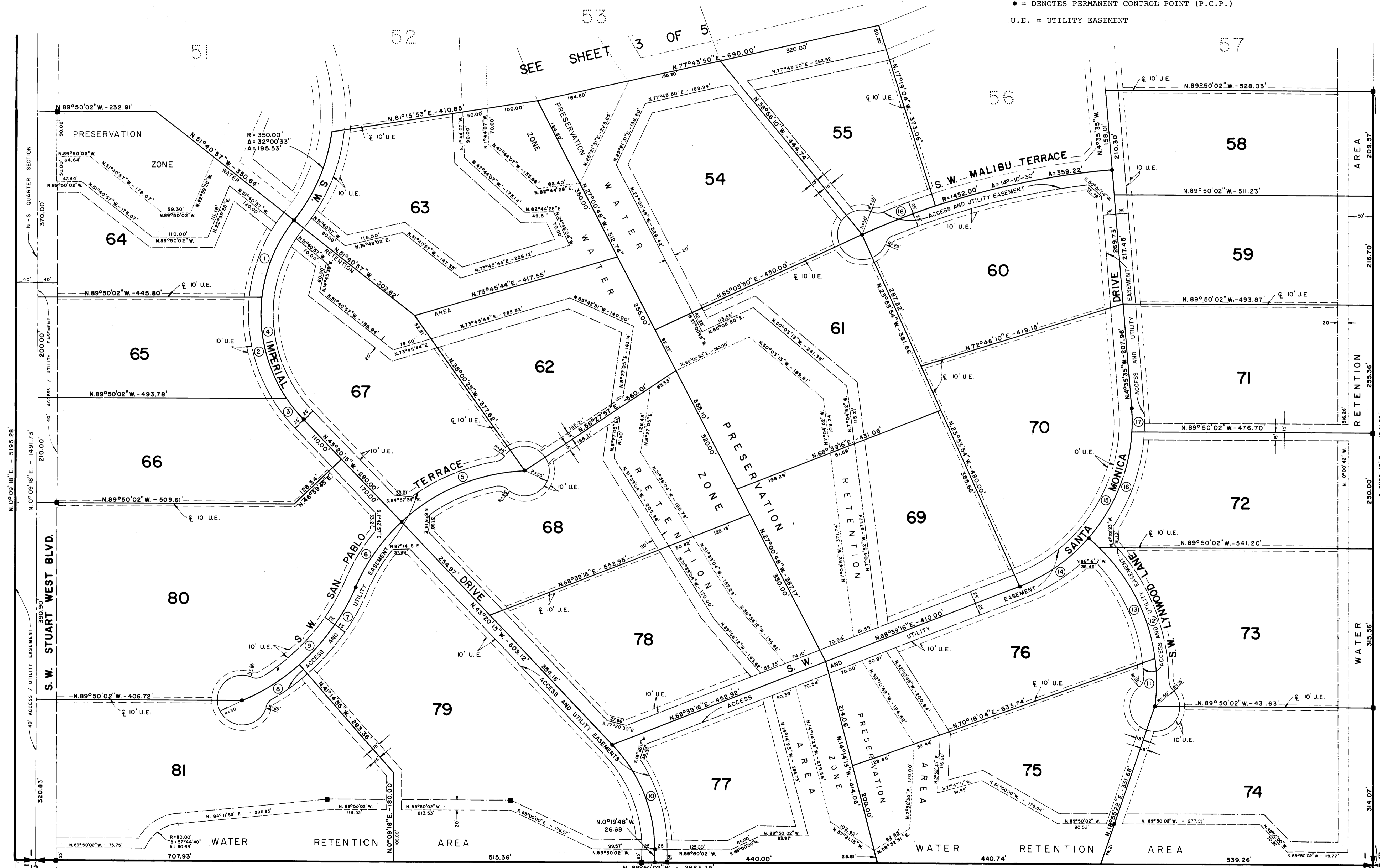
U.E. = UTILITY EASEMENT

I, LOUISE V. ISAACS, CLERK OF THE CIRCUIT COURT OF MARTIN COUNTY, FLORIDA, HEREBY CERTIFY THAT THIS PLAT WAS FILED FOR RECORD IN PLAT BOOK 9, PAGE 21, MARTIN COUNTY, FLORIDA, PUBLIC RECORDS, THIS 22nd DAY OF Dec. A.D. 1982.

LOUISE V. ISAACS, CLERK CIRCUIT COURT MARTIN COUNTY, FLORIDA

BY \_\_\_\_\_  
DEPUTY CLERK

FILE NO. \_\_\_\_\_



BEARING BASE:  
 SOUTH LINE OF THE SOUTHEAST 1/4 OF SECTION 13 IS TAKEN AS BEING S 88°50'33" W. AND ALL OTHER BEARINGS ARE RELATIVE THERETO.

- CUL-DE-SAC HAVE 50' RADII
- ACCESS/ EASEMENT
- MARSH PRESERVATION AREA
- DRAINAGE EASEMENT
- 20' DRAINAGE MAINTENANCE EASEMENT



KEY MAP

STUART WEST I, PLAT BOOK 8, PAGES 37

1.	302.62'	31°47'14"	167.89'	5.	375.00'	41°22'58"	270.85'	9.	420.00'	44°37'48"	327.16'	13.	385.41'	41°30'07"	279.17'	17.	351.67'	7°50'52"	48.17'
2.	302.62'	39°44'04"	209.87'	6.	375.00'	24°06'56"	157.84'	10.	306.41'	43°00'27"	230.00'	14.	351.67'	27°44'48"	170.30'	18.	1452.00'	6°08'05"	155.47'
3.	302.62'	10°08'00"	53.52'	7.	420.00'	26°12'16"	192.09'	11.	385.41'	14°09'32"	95.24'	15.	351.67'	73°14'53"	449.58'				
4.	302.62'	81°39'18"	431.28'	8.	420.00'	18°25'32"	135.07'	12.	385.41'	51°24'52"	345.85'	16.	351.67'	37°39'13"	231.11'				

LINDAHL, BROWNING, FERRARI & HELLESTROM, INC.  
 Consulting Engineers, Planners & Surveyors  
 426 INDIANTUN ROAD - 951 COLONADO AVENUE  
 DUNEDIN, FLORIDA 33458 STUART, FLORIDA 33494  
 11 SOUTH FLORIDA STREET  
 GAITHERSBURG, MARYLAND 20878