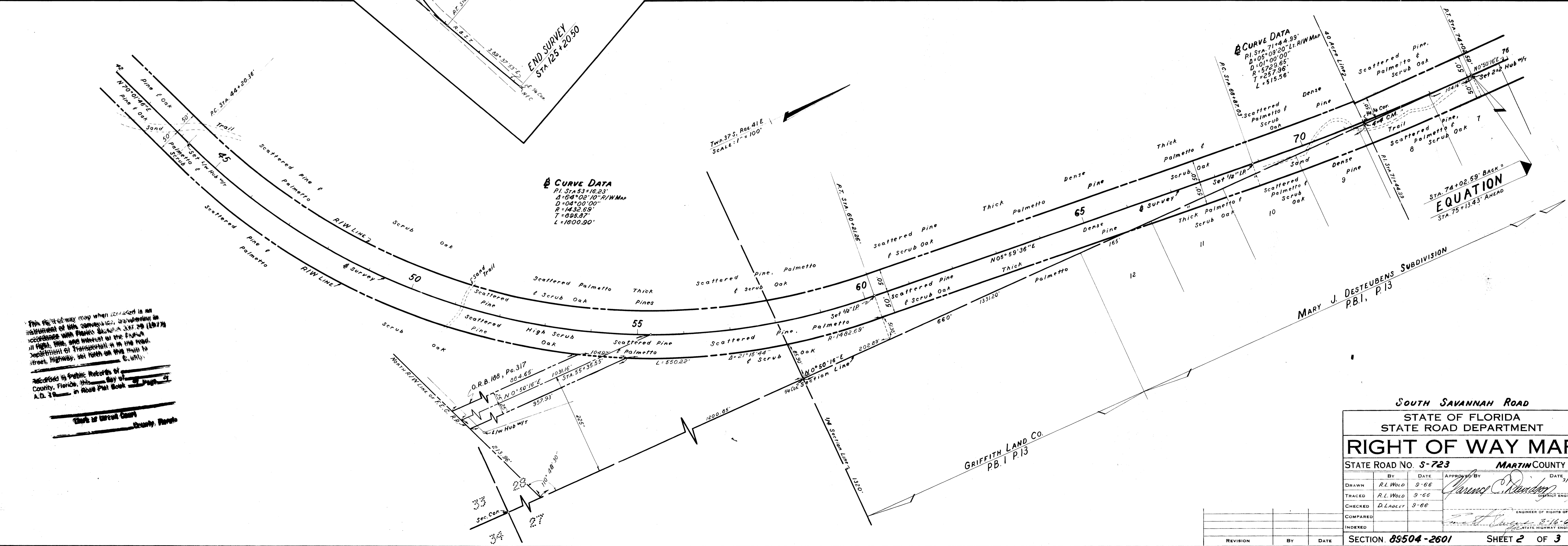
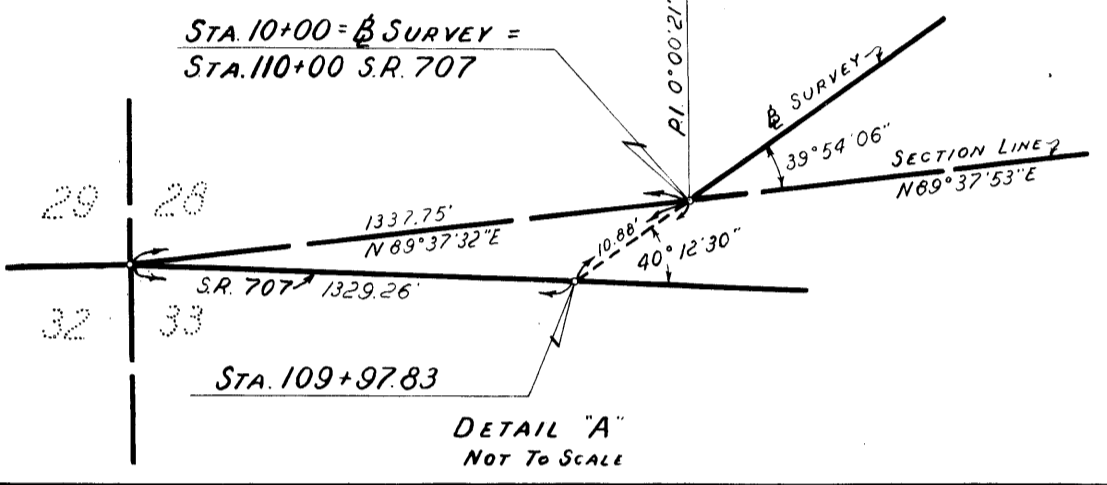
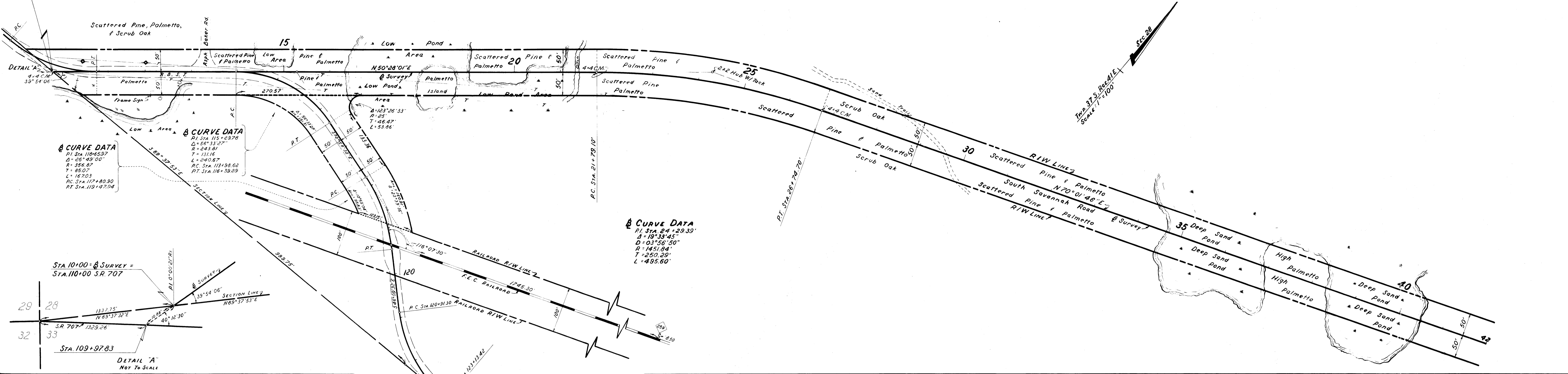


BEGIN SURVEY STA. 10+00.00 JOB #85504-2601



This right-of-way map when used is an instrument of the State of Florida, and shall be construed in accordance with the provisions of the Public Trust Doctrine, and in the event of any conflict between the provisions of this Act and the provisions of the Public Trust Doctrine, the provisions of the Public Trust Doctrine shall prevail.

Recorded in Public Records of County, Florida, this 11th day of A.D. 1966, in Book Plat Book 31, Page 4.

State of Florida
 County, Florida

SOUTH SAVANNAH ROAD
 STATE OF FLORIDA
 STATE ROAD DEPARTMENT
RIGHT OF WAY MAP
 STATE ROAD NO. S-723 MARTIN COUNTY

BY	DATE	APPROVED BY	DATE
R.L. Wold	5-66	<i>Carroll Henderson</i>	3/1/67
TRACED	R.L. Wold	9-66	DISTRICT ENGINEER
CHECKED	D. L. Auler	9-66	ENGINEER OF RIGHTS OF WAY
COMPARED			STATE HIGHWAY ENGINEER
INDEXED			

SECTION 85504-2601 SHEET 2 OF 3

GRIFFITH LAND CO. P.B. 1 P. 13

MARY J. DESTEBENS SUBDIVISION P.B. 1, P. 13