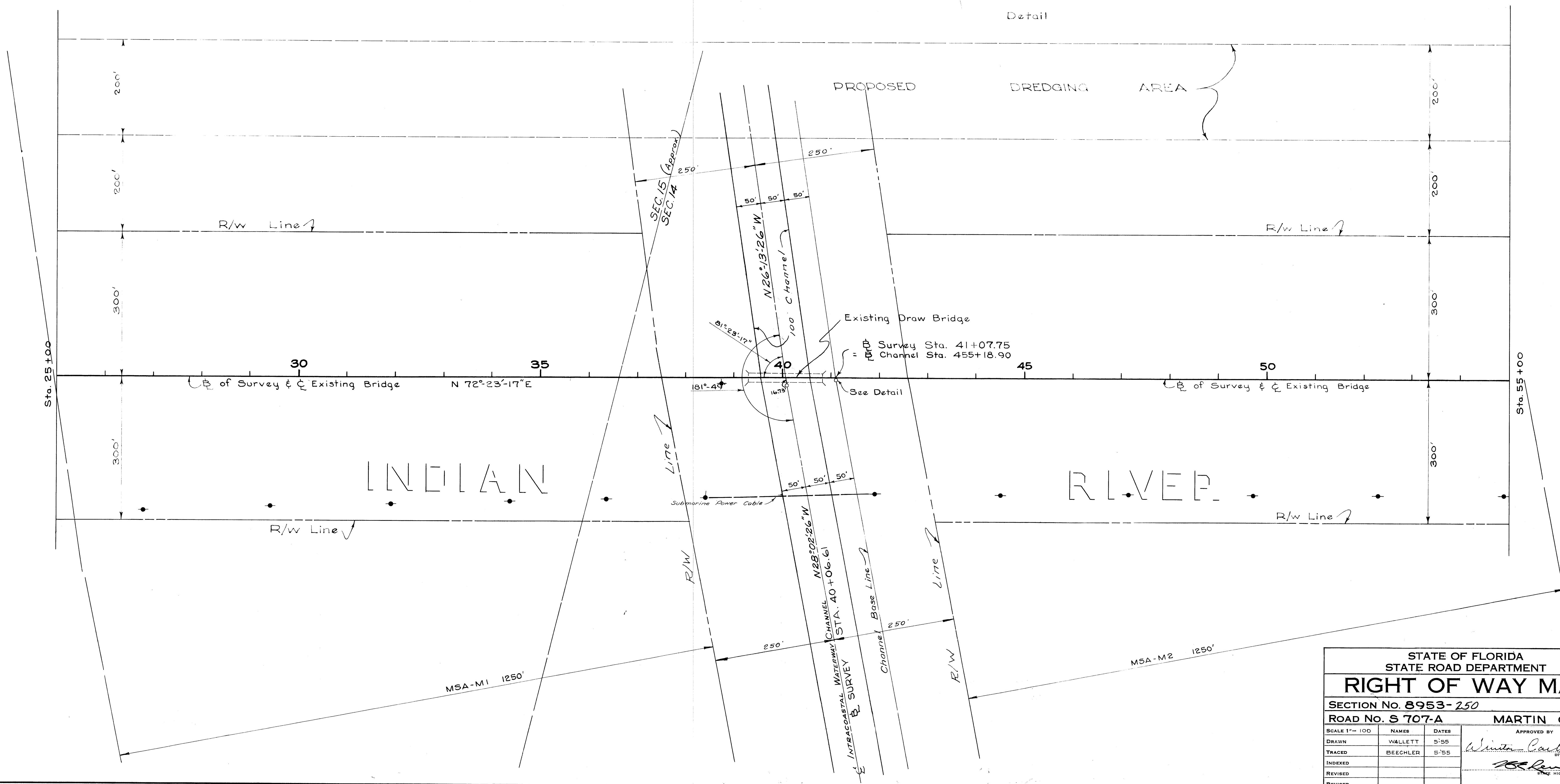
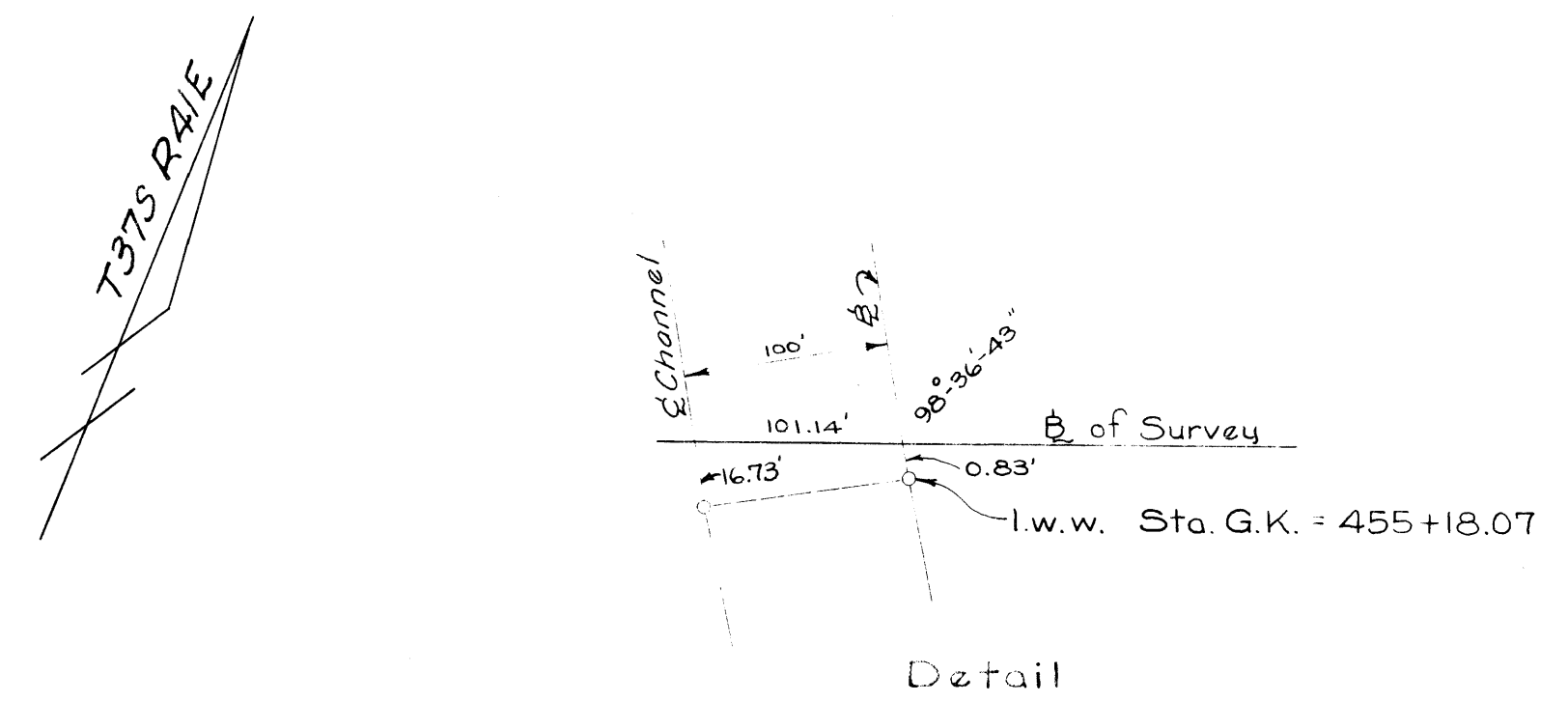


FED. ROAD DIV. No.	STATE	SEC. AND JOB No.	FISCAL YEAR	SHEET No.	TOTAL SHEETS
3	FLA	8953-	'55	2	3

"This right-of-way map when recorded is an instrument of title conveyance, transferring in accordance with Florida Statutes 337.29 (1977) all right, title, and interest of the Florida Department of Transportation in the road, street, highway, set forth on this map to County."

Recorded in Public Records of County, Florida, this ___ day of ___ A.D. 19___ in Road Plat Book 9 Page 2

Clerk of Circuit Court
County, Florida



STATE OF FLORIDA
STATE ROAD DEPARTMENT

RIGHT OF WAY MAP

SECTION No. 8953-250
ROAD No. S 707-A MARTIN COUNTY

SCALE 1" = 100'	NAMES	DATES	APPROVED BY
DRAWN	WALLETT	5'55	 DIVISION ENGINEER CIVIL ENGINEER
TRACED	BEECHLER	5'55	
INDEXED			
REVISED			