

PLAT OF IRONWOOD

A REPLAT OF A PORTION OF MARINER SANDS PLAT NO. 1

SECTION 31, TOWNSHIP 38 SOUTH, RANGE 42 EAST, MARTIN COUNTY, FLORIDA.

SHEET 2 OF 2 SHEETS

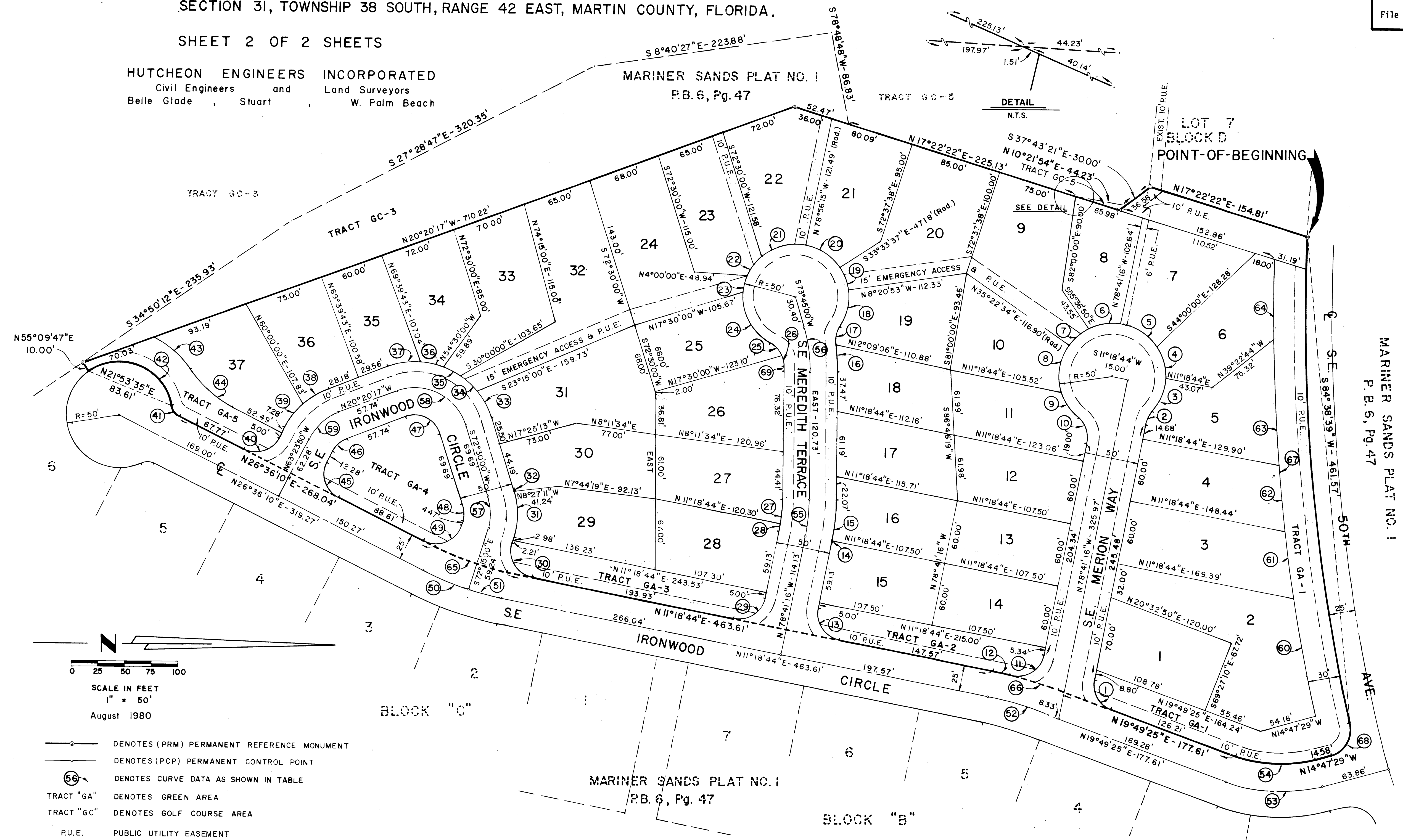
HUTCHEON ENGINEERS INCORPORATED
Civil Engineers and Land Surveyors
Belle Glade, Stuart, W. Palm Beach

I, Louise V. Isaacs, Clerk of the Circuit Court of Martin County, Florida, hereby certify that this plat was filed for record in Plat Book 8, Page 40, Martin County, Florida, public records, this day of 7, 1980.

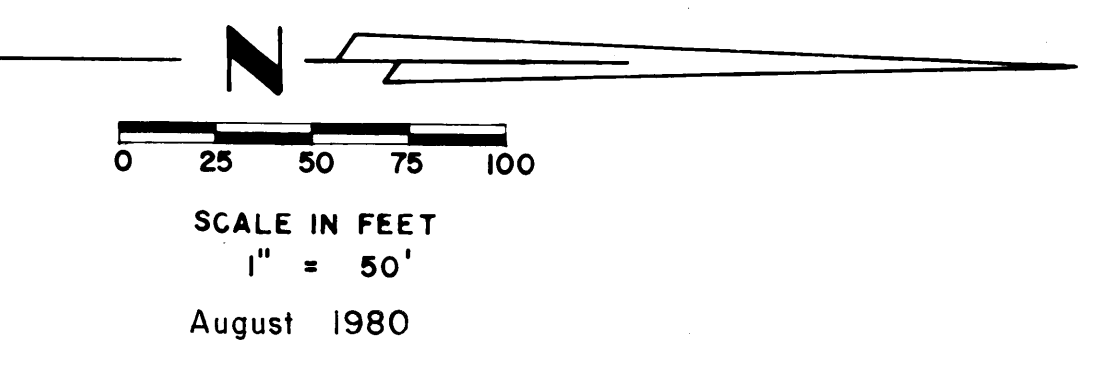
LOUISE V. ISAACS, CLERK
CIRCUIT COURT
MARTIN COUNTY, FLORIDA

BY: _____
Deputy Clerk

File No. _____



CURVE TABLE				
CURVE NO.	RADIUS	DELTA	ARC	CHORD
1	25.00'	81°29'19"	35.56'	32.63'
2	25.00'	29°55'35"	13.06'	12.91'
3	50.00'	39°01'07"	31.48'	33.40'
4	50.00'	36°04'39"	31.48'	30.97'
5	50.00'	46°43'08"	40.77'	39.65'
6	50.00'	36°16'15"	31.65'	31.13'
7	50.00'	27°46'37"	24.24'	24.00'
8	50.00'	54°30'17"	47.56'	45.79'
9	50.00'	31°44'28"	27.70'	27.35'
10	25.00'	62°10'55"	27.13'	25.82'
11	25.00'	92°13'13"	40.24'	36.03'
12	425.00'	2°13'13"	16.47'	16.47'
13	25.00'	90°00'00"	39.27'	35.36'
14	200.00'	0°14'59"	0.87'	0.87'
15	200.00'	11°03'45"	38.62'	38.57'
16	175.00'	8°02'50"	25.85'	25.83'
17	25.00'	42°16'00"	18.44'	18.03'
18	50.00'	42°09'03"	36.78'	35.96'
19	50.00'	25°12'43"	22.00'	21.83'
20	50.00'	45°22'39"	39.60'	38.57'
21	50.00'	51°27'46"	44.91'	43.42'
22	50.00'	28°04'41"	24.50'	24.26'
23	50.00'	17°51'40"	15.59'	15.52'
24	50.00'	65°17'37"	56.98'	53.95'
25	25.00'	34°17'26"	14.96'	14.74'
26	25.00'	24°22'49"	10.64'	10.56'
27	150.00'	8°48'07"	23.04'	23.02'
28	150.00'	2°30'37"	6.57'	6.57'
29	25.00'	90°00'00"	39.27'	35.36'
30	25.00'	96°26'16"	42.08'	37.29'
31	75.00'	33°56'55"	44.44'	43.79'
32	75.00'	1°18'05"	1.70'	1.70'
33	75.00'	22°01'13"	28.82'	28.65'
34	75.00'	16°19'08"	21.36'	21.29'
35	75.00'	14°01'49"	18.37'	18.32'
36	75.00'	16°31'22"	21.63'	21.55'
37	75.00'	23°56'45"	31.35'	31.12'
38	75.00'	22°31'17"	29.48'	29.29'
39	75.00'	20°32'16"	26.88'	26.74'
40	25.00'	90°00'00"	39.27'	35.36'
41	15.00'	59°01'13"	13.62'	13.16'
42	50.00'	11°30'27"	99.01'	85.61'
43	80.00'	34°03'36"	47.56'	46.86'
44	100.00'	30°33'30"	53.33'	52.71'
45	25.00'	90°00'00"	39.27'	35.36'
46	25.00'	43°03'33"	18.79'	18.35'
47	25.00'	92°50'17"	40.51'	36.22'
48	25.00'	35°15'00"	15.38'	15.14'
49	25.00'	98°51'10"	43.13'	37.98'
50	300.00'	8°51'10"	46.35'	46.31'
51	300.00'	6°26'16"	33.71'	33.69'
52	400.00'	3°30'41"	59.42'	59.37'
53	150.00'	34°36'54"	90.62'	89.25'
54	125.00'	34°36'54"	75.52'	74.37'
55	175.00'	11°18'44"	34.55'	34.50'
56	150.00'	16°15'00"	42.54'	42.40'
57	50.00'	38°15'00"	30.78'	30.28'
58	50.00'	92°50'17"	81.02'	72.44'
59	50.00'	43°03'33"	37.58'	36.70'
60	1735.00'	3°39'14"	110.64'	110.63'
61	1735.00'	2°05'56"	63.56'	63.56'
62	1735.00'	2°04'26"	62.80'	62.80'
63	1735.00'	4°01'42"	121.99'	121.99'
64	1735.00'	2°27'02"	59.84'	59.80'
65	275.00'	15°17'26"	73.39'	73.17'
66	425.00'	8°30'41"	63.14'	63.08'
67	1705.00'	15°33'31"	462.99'	461.57'
68	25.00'	88°20'38"	38.55'	34.84'
69	125.00'	2°57'44"	6.46'	6.46'



- DENOTES (PRM) PERMANENT REFERENCE MONUMENT
- DENOTES (PCP) PERMANENT CONTROL POINT
- Ⓢ DENOTES CURVE DATA AS SHOWN IN TABLE
- TRACT "GA" DENOTES GREEN AREA
- TRACT "GC" DENOTES GOLF COURSE AREA
- P.U.E. PUBLIC UTILITY EASEMENT