

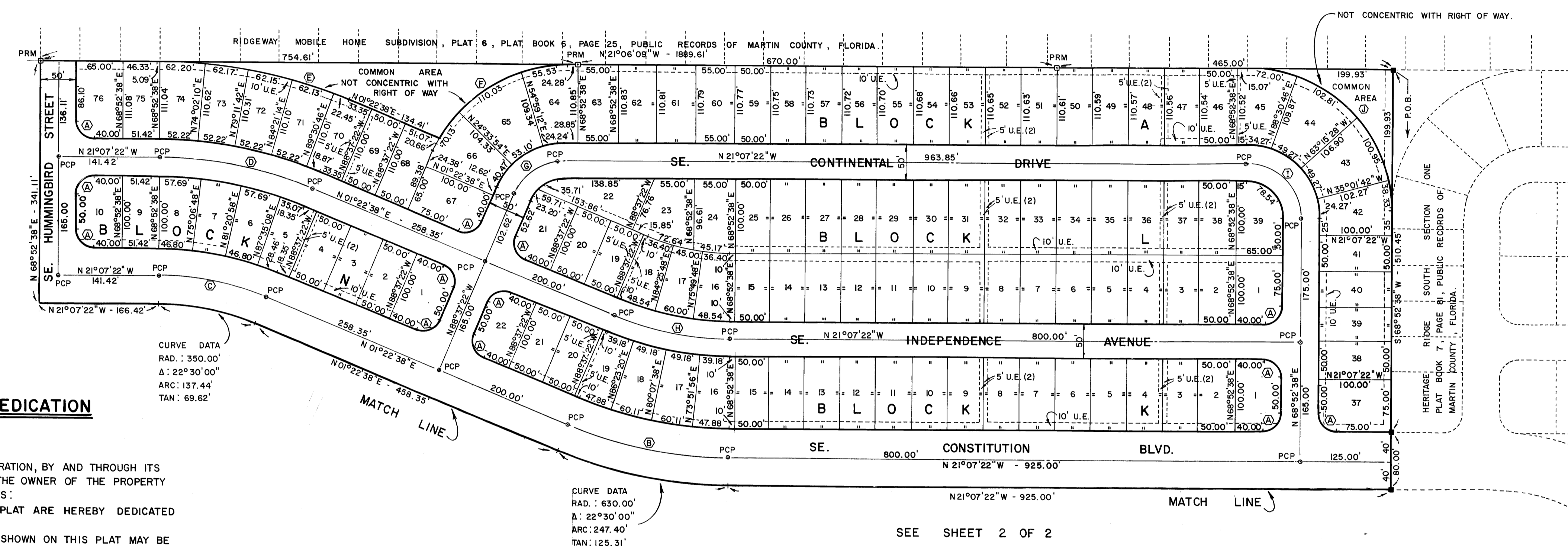
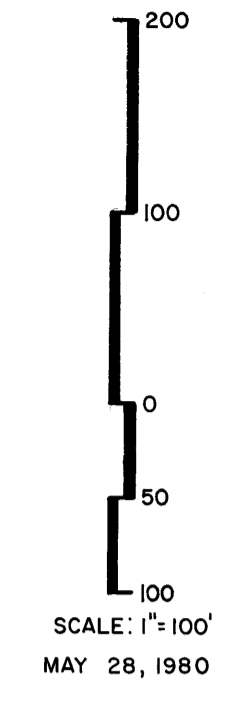
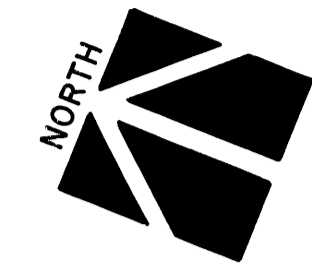
# HERITAGE RIDGE SOUTH SECTION TWO

GOMEZ GRANT MARTIN COUNTY FLORIDA

FILED FOR RECORD  
MARTIN COUNTY, FLA.  
30 SEP 8 9:47  
LOUISE V. ISAACS  
CLERK OF THE CIRCUIT COURT  
BY \_\_\_\_\_

I, LOUISE V. ISAACS, COUNTY CLERK OF MARTIN COUNTY, FLORIDA, HEREBY CERTIFY THAT THIS PLAT WAS FILED FOR RECORD IN PLAT BOOK 8 PAGE 310, MARTIN COUNTY, FLORIDA, PUBLIC RECORDS, THIS 22<sup>nd</sup> OF September, 1980.

LOUISE V. ISAACS, CLERK  
MARTIN COUNTY, FLORIDA  
BY: Charlotte Burkey FILE NO. 395460



CURVE DATA					
NO.	RADIUS	DELTA	LENGTH	TANGENT	CHORD
A	25.00'	90°00'00"	39.27'	25.00'	35.36'
B	590.00'	22°30'00"	231.69'	117.36'	230.21'
C	390.00'	22°30'00"	153.15'	77.58'	152.17'
D	555.00'	22°30'00"	217.95'	110.40'	216.55'
E	703.95'	22°28'47"	276.19'	139.89'	274.42'
F	200.00'	67°31'13"	235.69'	133.69'	222.29'
G	75.00'	67°30'00"	88.36'	50.11'	83.34'
H	425.00'	22°30'00"	166.19'	84.54'	165.83'
I	75.00'	90°00'00"	117.81'	75.00'	106.07'
J	200.00'	89°58'47"	314.09'	199.93'	282.79'

- GENERAL NOTES:
- ⊙ INDICATES PERMANENT REFERENCE MONUMENT
  - INDICATES PERMANENT CONTROL POINT
  - U.E.: UTILITY EASEMENT
  - LOT SPLITS ARE PROHIBITED EXCEPT TO INCREASE LOT SIZES.
  - THERE WILL BE NO LOT ACCESS FROM SE. CONSTITUTION BLVD.
  - MINIMUM LOT SIZE: 5000 SQ. FT.
  - THERE ARE RECORDED DEED RESTRICTIONS WITH THIS PLAT.
  - INDICATES EXISTING PERMANENT REFERENCE MONUMENT
  - SEE SHEET 2 OF 2 FOR LEGAL DESCRIPTION.
  - BEARINGS SHOWN HEREON ARE RELATED TO THE NORTHERLY LINE OF HERITAGE RIDGE SOUTH SECTION ONE, PLAT BOOK 7, PAGE 81, PUBLIC RECORDS OF MARTIN COUNTY, FLORIDA, BEING S 68°52'38"W.
  - UTILITIES TO BE DEFINED AS: WATER, SEWER, DRAINAGE, ELECTRICAL, TELEPHONE, & CABLE T.V.

### CERTIFICATE OF OWNERSHIP AND DEDICATION

STATE OF FLORIDA  
COUNTY OF MARTIN

RIDGEWAY MOBILE HOME SUBDIVISION, INC., A FLORIDA CORPORATION, BY AND THROUGH ITS UNDERSIGNED OFFICERS DOES HEREBY CERTIFY THAT IT IS THE OWNER OF THE PROPERTY DESCRIBED HEREON AND DOES HEREBY DEDICATE AS FOLLOWS:

- THE STREETS AND RIGHTS OF WAY SHOWN ON THIS PLAT ARE HEREBY DEDICATED TO THE USE OF THE PUBLIC.
- THE UTILITY EASEMENTS AND DRAINAGE EASEMENTS SHOWN ON THIS PLAT MAY BE USED FOR UTILITY PURPOSES BY ANY UTILITY COMPANY IN COMPLIANCE WITH SUCH ORDINANCES AND REGULATIONS AS MAY BE ADOPTED FROM TIME TO TIME BY THE BOARD OF COUNTY COMMISSIONERS OF MARTIN COUNTY, FLORIDA.
- COMMON AREAS SHOWN ON THIS PLAT ARE HEREBY DECLARED TO BE PRIVATE AND ARE DEDICATED TO THE HERITAGE RIDGE SOUTH HOMEOWNERS ASSOCIATION, FOR THE USE OF THE OWNERS OF LOTS IN HERITAGE RIDGE SOUTH. THE BOARD OF COUNTY COMMISSIONERS OF MARTIN COUNTY, SHALL HAVE NO RESPONSIBILITY, DUTY, OR LIABILITY REGARDING SUCH COMMON AREAS.

SIGNED AND SEALED THIS 19<sup>th</sup> DAY OF AUGUST 1980 ON BEHALF OF SAID CORPORATION BY ITS PRESIDENT AND ATTESTED TO BY ITS SECRETARY.

RIDGEWAY MOBILE HOME SUBDIVISION, INC.

Harold L. Keathley  
HAROLD L. KEATHLEY, PRESIDENT

Gerald W. Bobo  
GERALD W. BOBO, SECRETARY

### ACKNOWLEDGEMENT

STATE OF FLORIDA  
COUNTY OF MARTIN

BEFORE ME, THE UNDERSIGNED NOTARY PUBLIC, PERSONALLY APPEARED HAROLD L. KEATHLEY AND GERALD W. BOBO, TO ME WELL KNOWN TO BE THE PRESIDENT AND SECRETARY, RESPECTIVELY, OF RIDGEWAY MOBILE HOME SUBDIVISION, INC., A FLORIDA CORPORATION, AND THEY ACKNOWLEDGE THAT THEY EXECUTED THE FOREGOING CERTIFICATE OF OWNERSHIP AND DEDICATION, AS SUCH OFFICERS OF SUCH CORPORATION.

WITNESS MY HAND AND OFFICIAL SEAL THIS 19<sup>th</sup> DAY OF AUGUST, 1980.

Payton Weisman  
NOTARY PUBLIC

MY COMMISSION EXPIRES 3/7/82

### TITLE CERTIFICATION

STATE OF FLORIDA  
COUNTY OF MARTIN

I, Hubert W. Biggs, A MEMBER OF THE FLORIDA BAR, HEREBY CERTIFY THAT:

- APPARENT RECORD TITLE TO THE LAND DESCRIBED AND SHOWN ON THIS PLAT IS IN THE NAME OF THE PERSON EXECUTING THE DEDICATION HEREON.
- ALL MORTGAGES NOT SATISFIED OR RELEASED OF RECORD ENCUMBERING THE LAND DESCRIBED HEREON ARE AS FOLLOWS:  
NONE

DATED THIS 17<sup>th</sup> DAY OF AUGUST 1980.

Hubert W. Biggs  
P.O. BOX 1510  
HOBE SOUND, FLA. 32455

### SURVEYOR'S CERTIFICATE

STATE OF FLORIDA  
COUNTY OF MARTIN

I, DAVID W. BETHAM, DO HEREBY CERTIFY THAT THIS PLAT OF HERITAGE RIDGE SOUTH SECTION TWO, IS A TRUE AND CORRECT REPRESENTATION OF THE LANDS SURVEYED, THAT THE SURVEY WAS MADE UNDER MY SUPERVISION, AND THAT THE SURVEY DATA COMPLIES WITH ALL OF THE REQUIREMENTS OF CHAPTER 177, FLORIDA STATUTES.

David W. Betham  
PROFESSIONAL LAND SURVEYOR  
FLORIDA CERTIFICATE NO. 3199

DATED: 8-22-80

### COUNTY APPROVAL

STATE OF FLORIDA  
COUNTY OF MARTIN

THIS PLAT IS HEREBY APPROVED BY THE UNDERSIGNED ON THE DATES INDICATED.

DATED:

SEPT 5, 1980 BY [Signature] CHAIRMAN, PLANNING & ZONING COMMISSION

Sept 5, 1980 BY [Signature] CHAIRMAN, BOARD OF COUNTY COMMISSIONERS

SEPT. 5, 1980 BY [Signature] COUNTY ENGINEER

5 SEP 80 BY [Signature] COUNTY ATTORNEY

Sept 8, 1980 ATTESTED: Louise V. Isaacs CLERK OF THE CIRCUIT COURT  
By Charlotte Burkey O.C.