

FILED FOR RECORD
MARTIN COUNTY, FLA.
00 SEP 3 P2: 28
LOUISE V. ISAACS
CLERK OF CIRCUIT COURT
BY _____ D.C.

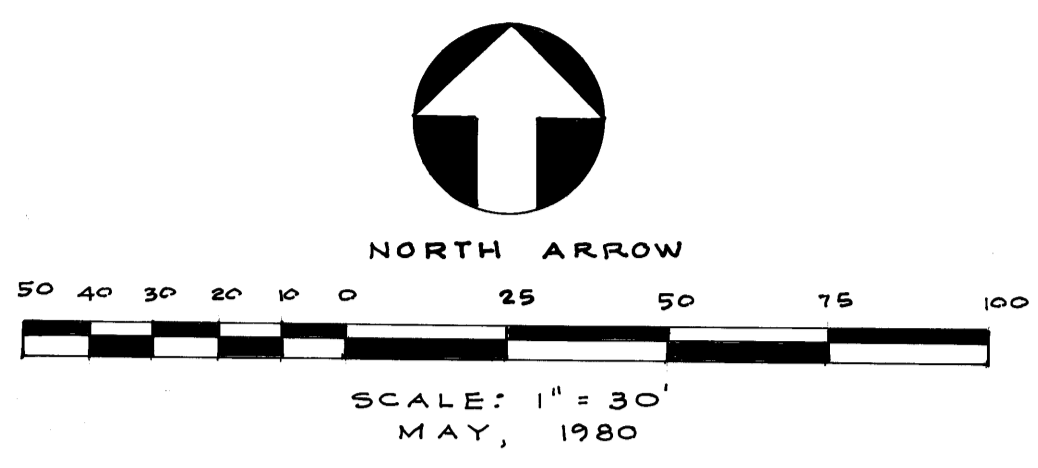
I, Louise V. Isaacs, Clerk of the Circuit Court of Martin County, Florida, hereby certify that this plat was filed for record in Plat Book 8 Page 34, Martin County, Florida, public records this 3rd day of September, 1980.

LOUISE V. ISAACS, CLERK OF CIRCUIT COURT MARTIN COUNTY FLORIDA

File No. 38504D By: Charlotte Burkley Deputy Clerk

- KAHLE McCLEESE -

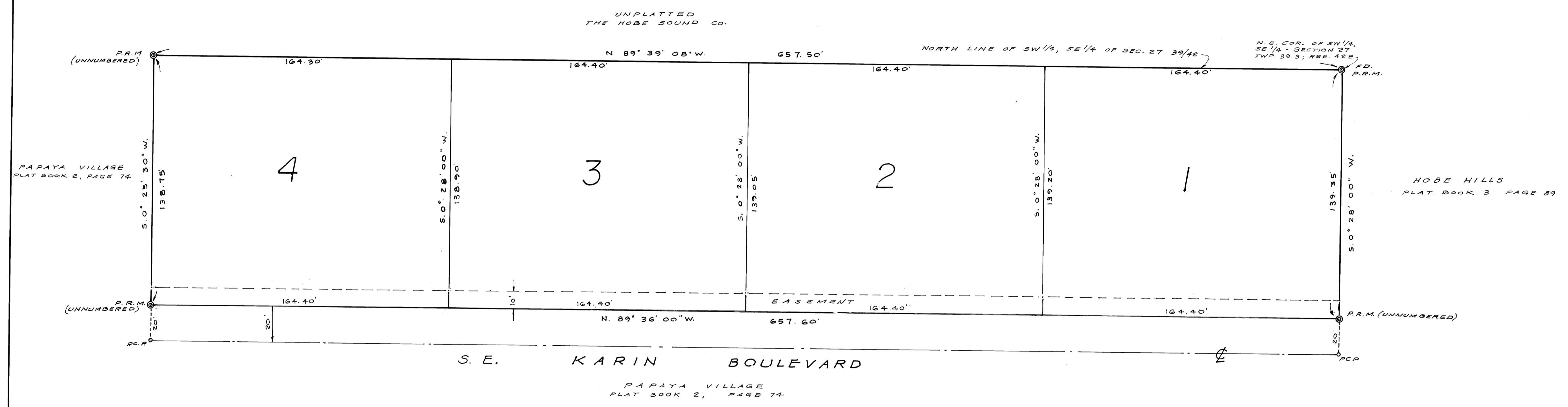
A REPLAT OF LOT G, PAPAYA VILLAGE
A SUBDIVISION IN THE SOUTHEAST ONE QUARTER OF SECTION 27, TOWNSHIP 39 SOUTH,
RANGE 42 EAST, MARTIN COUNTY, FLORIDA.



LEGAL DESCRIPTION

Lot "G", PAPAYA VILLAGE, as recorded in Plat Book 2, Page 74 Martin County, Florida

NOTE: BEARINGS REFER TO PLAT OF PAPAYA VILLAGE.



TITLE CERTIFICATION

State of Florida ss
County of Martin
I, William Bosso, a member of the Florida bar, hereby certify that apparent record title to the land described and shown on this plat is in the name of the person, persons, corporation or other entity which executed the certificate of ownership and dedication hereon.
There are no Mortgages, liens, or encumbrances on public records on this property.
August 25, 1980
William Bosso Jr.
William Bosso, Jr.
Attorney at Law
2428 Broadway
Riviera Beach, Fl.

CERTIFICATE OF OWNERSHIP AND DEDICATION

State of Florida ss
County of Martin
KAHLE McCLEESE, INC., a Florida corporation by and through its undersigned officers, does hereby dedicate all of the streets, walkways, and thoroughfares shown on this plat of KAHLE McCLEESE to the use of the public. The easements shown on this plat of KAHLE McCLEESE may be used for drainage, and, or utility purposes by any utility in compliance with such ordinances and regulations as may be adopted from time to time by the Board of County Commissioners of Martin County, Florida.
Signed and sealed this _____ day of _____, 1980, on behalf of said Corporation by its President and attested by its Secretary.
KAHLE McCLEESE, INC.
Attest: Lloyd McCleese By: Lance D. Kahle
Lloyd McCleese, Sec. Lance Kahle, Pres.

APPROVAL OF COUNTY

This plat is hereby approved by the undersigned on date or dates indicated:
E. L. Greenamyers
County Engineer
SEPT. 3, 1980
Planning and Zoning Comm.
Martin County, Florida
By: [Signature]
Chairman
SEPT 3, 1980
Stan Fry
County Attorney
3 SEP, 1980
Board of County Comm.
Martin County, Florida
By: Maggie Hurchalla
SECRETARY
SEPT. 3, 1980
ATTEST: Louise Isaacs
Clerk
By Charlotte Burkley D.C.

SURVEYOR'S CERTIFICATE

I, W. L. Williams, do hereby certify that this plat of KAHLE McCLEESE is a true and correct representation of the lands surveyed, that the survey was made under my supervision and that the survey data complies with all the requirements of Chapter 177, Florida Statutes.
W. L. Williams
W. L. Williams
Reg. Land Surveyor
Fla. Reg. No. 1272

ACKNOWLEDGEMENT

State of Florida ss
County of Martin
Before me, the undersigned Notary Public, personally appeared Lance Kahle and Lloyd McCleese to me well known to be the President and Secretary respectively, of KAHLE McCLEESE, INC., a Florida corporation and they acknowledged that they executed such instrument as such officers of said Corporation.
Witness my hand and Official seal this _____ day of 1980.
My Commission expires: May 7, 1982
[Signature]
Notary Public