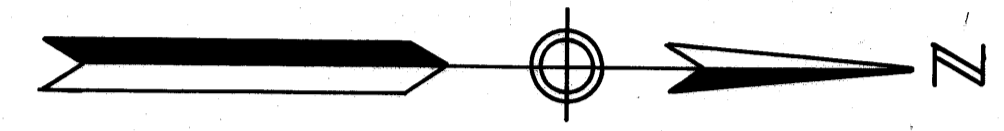


PLAT NO. 1 SAILFISH POINT

P.U.D.
IN PART OF FRACTIONAL SECTION 8, TWP. 38 S., RGE. 42 E.
MARTIN COUNTY, FLORIDA

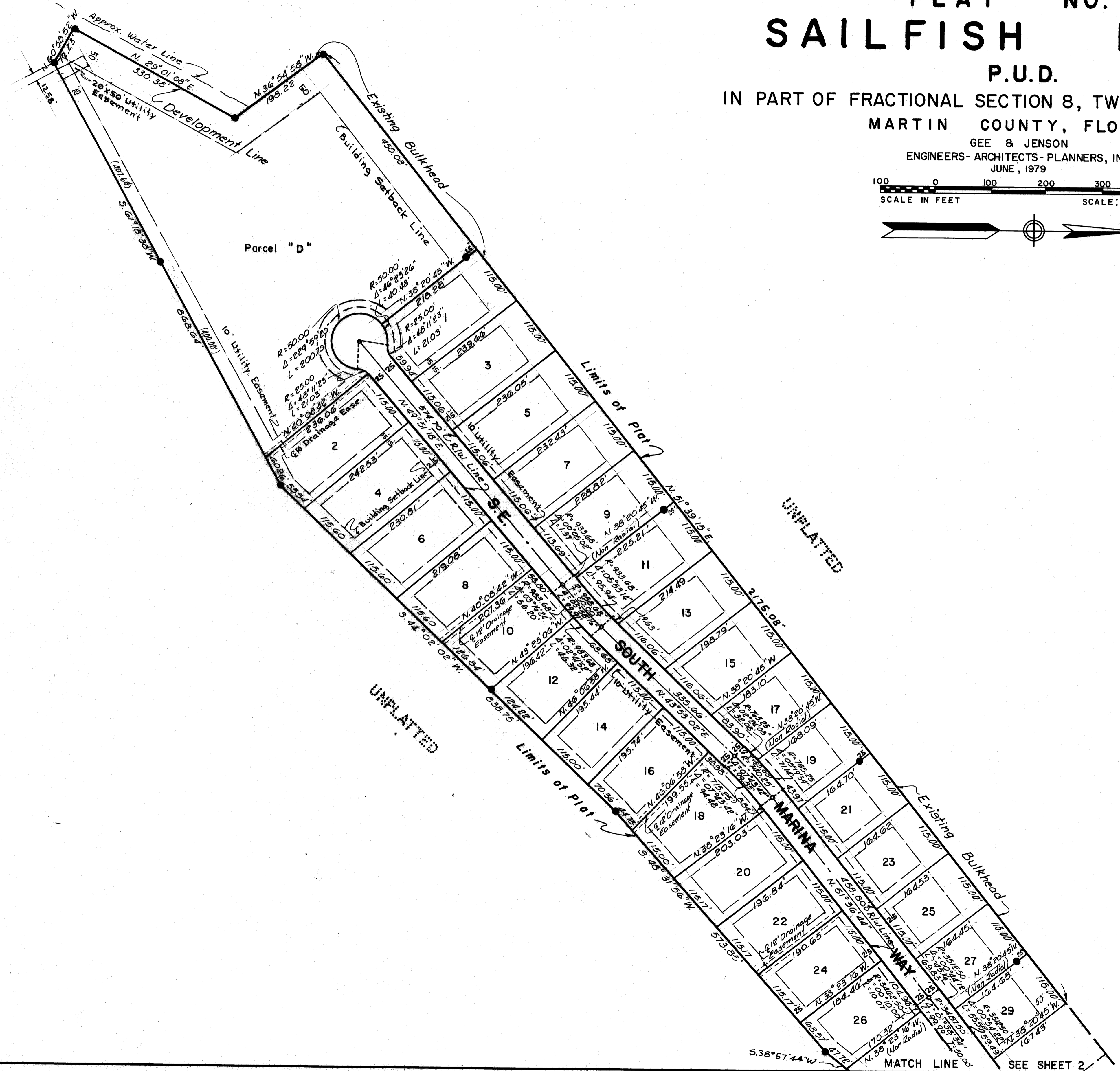
GEE & JENSON
ENGINEERS-ARCHITECTS-PLANNERS, INC.
JUNE, 1979



LOUISE V. ISAACS, CLERK OF THE CIRCUIT COURT OF MARTIN COUNTY, FLORIDA, HEREBY CERTIFY THAT THIS PLAT WAS FILED FOR RECORD IN PLAT BOOK 8, PAGE 10, MARTIN COUNTY, FLORIDA, PUBLIC RECORDS, THIS DAY OF _____, 1980.

LOUISE V. ISAACS, CLERK
CIRCUIT COURT
MARTIN COUNTY, FLORIDA
BY: _____
DEPUTY CLERK

INDIAN RIVER



UNPLATTED

UNPLATTED

● Denotes Permanent Reference Monument.
○ Denotes Permanent Control Point.
All bearings shown herein are relative to the South Line of the North 540 feet of Government Lot 2 of Fractional Section 8-38-42 bearing N. 88° 06' 45" E.
Easements are for Public Utilities unless otherwise shown.
_____ denotes Building Setback Line. Typical Setback Distances - 25' Front and Back except along Water which is 50'; Side Setback - 15'.