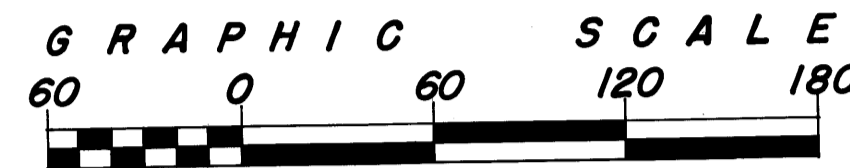


LOCATION MAP

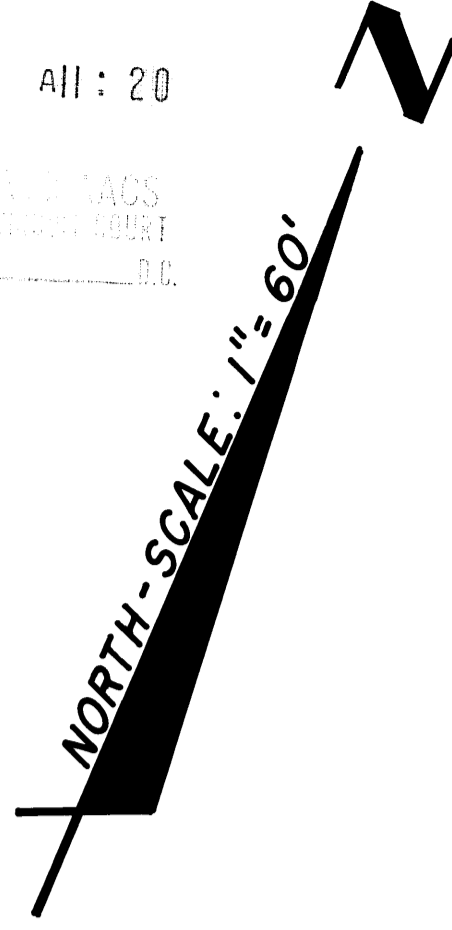
# "PARK PLACE"

## ROCKY POINT - PORT SALERNO

BEING A SUBDIVISION OF LOT 32, OF PLAT OF SUBDIVISION OF LOTS 13 AND 14, HANSON GRANT, TOWNSHIP 38 SOUTH, RANGE 41 AND 42 EAST, AS RECORDED IN PLAT BOOK 1, PAGE 89, PUBLIC RECORDS OF PALM BEACH, NOW MARTIN COUNTY, FLORIDA.



AUGUST, 1979



### CERTIFICATE OF APPROVAL OF COUNTY CLERK STATE OF FLORIDA

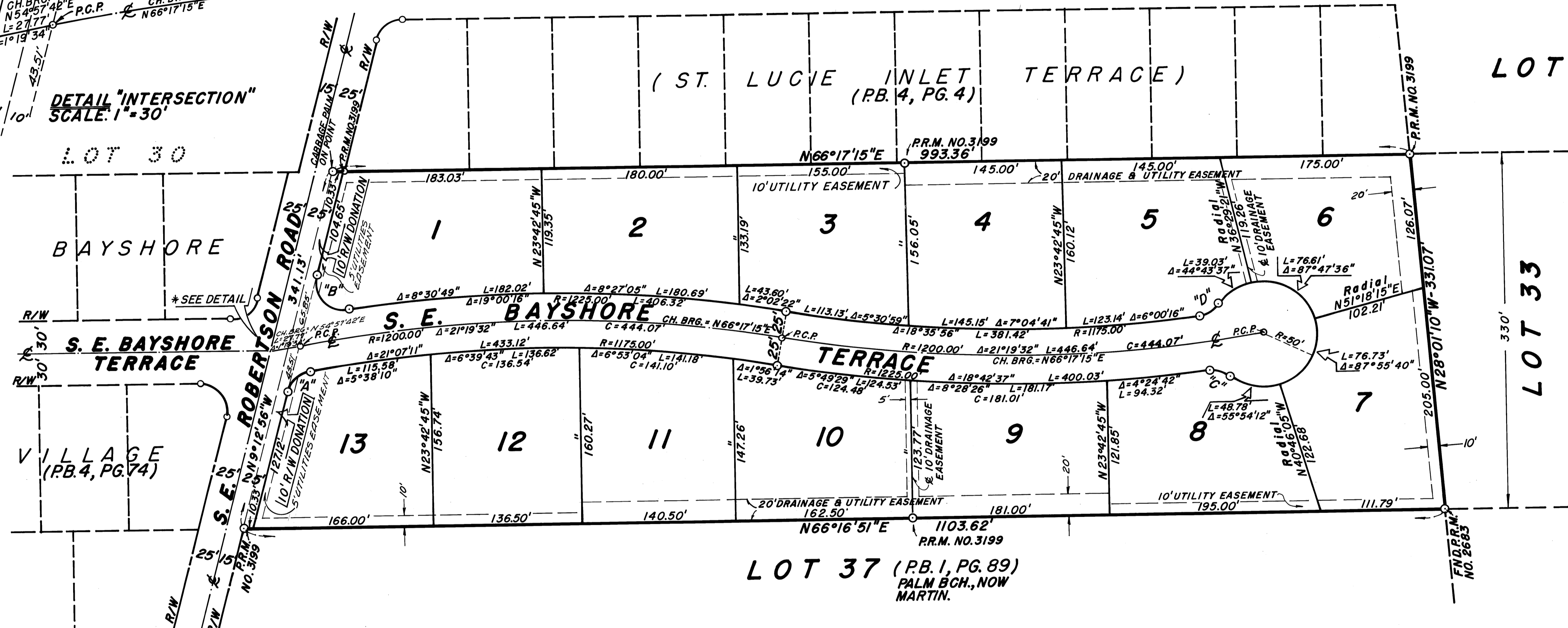
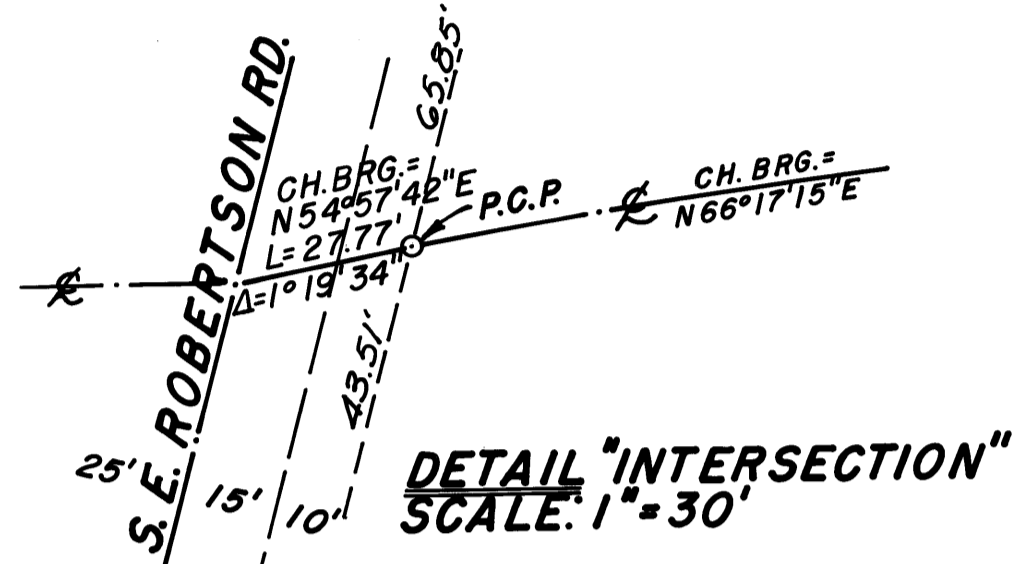
COUNTY OF MARTIN

I, LOUISE V. ISAACS, COUNTY CLERK OF MARTIN COUNTY, FLORIDA, HEREBY CERTIFY THAT THIS PLAT HAS BEEN EXAMINED AND THAT IT COMPLIES IN FORM WITH ALL THE REQUIREMENTS OF THE STATUTES OF FLORIDA PERTAINING TO MAPS AND PLATS, AND THAT THIS PLAT HAS BEEN FILED FOR RECORD IN PLAT BOOK 3, PAGE 8, PUBLIC RECORDS OF MARTIN COUNTY, FLORIDA, THIS 28 DAY OF August, A.D. 1979.

LOUISE V. ISAACS, CLERK  
MARTIN COUNTY, FLORIDA

BY: Charlotte Burkey

FILE NO. 365181



CURVE DATA				
CURVE	RAD.	Δ	LEN.	CH.
"A"	25.00'	65° 02' 46"	28.38'	26.88'
"B"	"	112° 50' 19"	49.24'	41.66'
"C"	"	46° 53' 43"	20.46'	19.90'
"D"	"	49° 34' 03"	21.63'	20.96'

NOTES: LOTS SHOWN HEREON ARE ONE-HALF ACRE OR LARGER.  
NO LOT SPLITS EXCEPT TO CREATE LARGER LOTS.  
ACCESS TO LOTS FROM INTERNAL ROAD SYSTEM ONLY.

SURVEYOR'S NOTE: BEARINGS SHOWN HEREON ARE RELATED TO N66°17'15"E ON THE SOUTH LINE OF ST. LUCIE INLET TERRACE S/D, PB. 4, PG. 4, MARTIN CO., FLORIDA.

### CERTIFICATE OF OWNERSHIP AND DEDICATION

STATE OF FLORIDA  
COUNTY OF MARTIN

ANN L. JOLLY AND ROSE Mc C. STEVENS, CERTIFY THAT WE ARE THE OWNERS OF THE PROPERTY DESCRIBED HEREON, AND DO HEREBY DEDICATE THE STREET SHOWN HEREON TO THE PERPETUAL USE OF THE PUBLIC. THE EASEMENTS SHOWN ON THIS PLAT MAY BE USED FOR DRAINAGE AND / OR UTILITY PURPOSES BY ANY UTILITY IN COMPLIANCE WITH SUCH ORDINANCES AND REGULATIONS AS MAY BE ADOPTED FROM TIME TO TIME BY THE BOARD OF COUNTY COMMISSIONERS OF MARTIN COUNTY. HOWEVER THE 20 FOOT DRAINAGE AND UTILITY EASEMENT ON LOTS 4 THRU 6 AND 9 THRU 11 SHOWN ON THIS PLAT ARE HEREBY DECLARED TO BE PRIVATE AND ARE DEDICATED TO THE "PARK PLACE" PROPERTY OWNERS, FOR THE USE OF THE OWNERS OF LOTS IN "PARK PLACE". THE BOARD OF COUNTY COMMISSIONERS OF MARTIN COUNTY, FLORIDA, SHALL HAVE NO RESPONSIBILITY, DUTY, OR LIABILITY REGARDING SUCH EASEMENTS.

IN WITNESS WHEREOF, WE HAVE SET OUR HAND AND SEAL THIS 19 DAY OF August, 1979.

Ann L. Jolly  
ANN L. JOLLY  
Rose Mc C. Stevens  
ROSE Mc C. STEVENS

Richard C. Heisinger  
WITNESS  
Richard C. Stevens  
WITNESS

### ACKNOWLEDGEMENT

BEFORE ME PERSONALLY APPEARED ANN L. JOLLY AND ROSE Mc C. STEVENS, KNOWN TO BE THE INDIVIDUALS WHO EXECUTED THE FOREGOING CERTIFICATE OF OWNERSHIP AND DEDICATION.

WITNESS, MY HAND AND OFFICAL SEAL THIS 19 DAY OF August, 1979.

Sally J. Snyder  
NOTARY PUBLIC, STATE OF FLORIDA  
AT LARGE

### SURVEYORS CERTIFICATE

I, DAVID W. BETHAM, DO HEREBY CERTIFY THAT THIS PLAT IS A TRUE REPRESENTATION OF THE LANDS SURVEYED UNDER MY DIRECTION AND SAID SURVEY IS ACCURATE TO THE BEST OF MY KNOWLEDGE AND BELIEF, AND THE P.R.M.S AND P.C.P.S HAVE BEEN PLACED AS REQUIRED BY LAW, AND THE SURVEY COMPLIES WITH ALL THE REQUIREMENTS OF CHAPTER 177 OF THE FLORIDA STATUTES.

David W. Betham  
DAVID W. BETHAM, PROFESSIONAL  
LAND SURVEYOR, FLORIDA CERTIFICATE NO. 3199

### TITLE CERTIFICATION

APPARENT RECORD TITLE TO THE LAND DESCRIBED AND SHOWN ON THIS IS IN THE NAME OF THE PERSON, PERSONS, CORPORATION OR OTHER ENTITY WHICH EXECUTED THE CERTIFICATE OF OWNERSHIP AND DEDICATION HEREON.

ALL MORTGAGES NOT SATISFIED OR RELEASED OF RECORD ENCUMBERING THE LAND DESCRIBED HEREON ARE AS FOLLOWS: None

Gracey Pausburn, C.L.S.  
GRACEY PAUSBURN, C.L.S., FIRST AMERICAN TITLE OF MARTIN COUNTY, INC.

### APPROVAL OF COUNTY

STATE OF FLORIDA, COUNTY OF MARTIN

IT IS HEREBY CERTIFIED THAT THIS PLAT HAS BEEN OFFICIALLY APPROVED FOR RECORD BY THE BOARD OF COUNTY COMMISSIONERS OF THE COUNTY OF MARTIN, FLORIDA, THIS 17 DAY OF JANUARY, 1979.

Attest:  
Louise V. Isaacs, CHAIRMAN BOARD OF COUNTY COMMISSIONERS  
Charlotte Burkey, COUNTY ENGINEER  
By Charlotte Burkey, CHAIRMAN PLANNING AND ZONING COMMISSION  
John J. ..., COUNTY ATTORNEY

THE BETHAM GROUP, INC.  
LAND SURVEYING  
P. O. BOX 2264  
STUART, FLA. 33494  
PH. 334-1442 465-2583

### SHEET NUMBER

1 OF 1