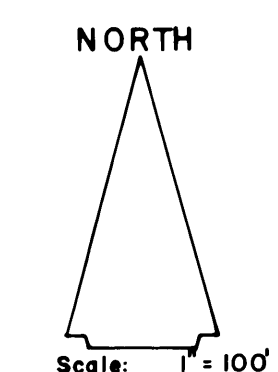


79 OCT 26 P 3: 15

# CRANE CREEK RACQUET CLUB PHASE FOUR

Section 12, Township 38 South, Range 40 East, Martin County, Florida



Scale: 1" = 100'  
Scale: AUGUST, 1979 Feet  
100 75 50 25 0 100 200

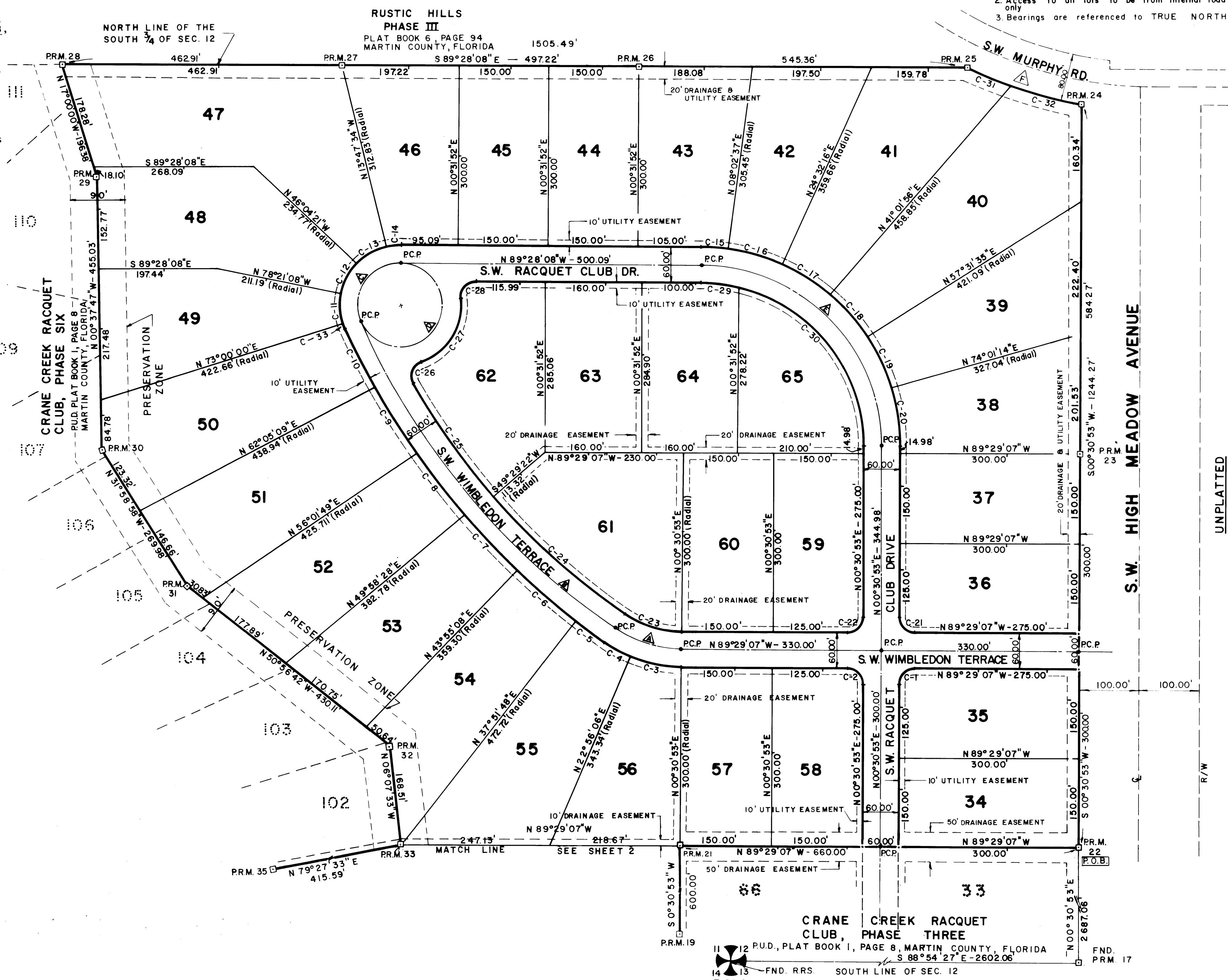
LEGEND  
□ = Permanent Reference Monument  
○ = Permanent Control Point

I, LOUISE V. ISAACS, CLERK OF THE CIRCUIT COURT OF MARTIN COUNTY, FLORIDA, HEREBY CERTIFY THAT THIS PLAT WAS FILED FOR RECORD IN PLAT BOOK 7, PAGE 100, MARTIN COUNTY, FLORIDA, PUBLIC RECORDS, THIS 26TH DAY OF OCTOBER, 1979.

LOUISE V. ISAACS, CLERK  
CIRCUIT COURT  
MARTIN COUNTY, FLORIDA  
FILE NO. 359303  
BY: Charlotte Burke  
DEPUTY CLERK

### LEGAL DESCRIPTION

Start at the Southwest corner of Section 12, Township 38 South, Range 40 East, Martin County, Florida; thence run S 88°54'27" E, along the South line of said Section 12, a distance of 2602.06 feet to the Point of Intersection with the Westerly Right of Way line of S.W. High Meadow Avenue; thence run N 0°30'53" E, along said Westerly Right of Way line, a distance of 2687.06 feet to the Point of Intersection with the North line of CRANE CREEK RACQUET CLUB, PHASE THREE, PUD Plat Book 1, Page 8, Public Records of Martin County, Florida, said point being the POINT OF BEGINNING; thence run N 89°29'07" W, along said North line, a distance of 660.00 feet to the Point of Intersection with the West line of said CRANE CREEK RACQUET CLUB, PHASE THREE; thence run S 0°30'53" W, along said West line, a distance of 1020.40 feet to the Point of Intersection with the Northerly line of CRANE CREEK RACQUET CLUB, PHASE FIVE, PUD Plat Book 1, Page 8, Public Records of Martin County, Florida; thence run N 76°45'19" W, along said Northerly line, a distance of 426.31 feet to the Point of Intersection with the Easterly line of CRANE CREEK RACQUET CLUB, PHASE SIX, PUD Plat Book 1, Page 8, Public Records of Martin County, Florida; thence run N 36°30'00" E, along said Easterly line, a distance of 32.62 feet; thence run N 0°30'53" E a distance of 484.55 feet; thence run N 38°17'50" W a distance of 341.98 feet; thence run N 87°15'10" W a distance of 341.48 feet to the Point of Intersection with the Easterly Right of Way line of S.W. Racquet Club Drive, said point lying on a curve concave to the Southwest, having a radius of 935.81 feet, a radial line to which point bears N 81°54'19" E; thence run Northwestwesterly along the arc of said curve and said Easterly Right of Way line a distance of 54.62 feet, through a central angle of 3°20'40" to a point, a radial line to which point bears N 78°33'39" E; thence run N 89°01'19" E a distance of 88.32 feet; thence run N 79°27'33" E a distance of 415.59 feet; thence run N 06°07'33" W a distance of 168.51 feet; thence run N 50°56'42" W a distance of 430.11 feet; thence run N 31°58'58" W a distance of 269.98 feet; thence run N 00°37'42" W a distance of 455.03 feet; thence run N 17°00'00" W a distance of 196.38 feet to the Point of Intersection with the South line of RUSTIC HILLS, PHASE III, Plat Book 6, Page 94, Public Records of Martin County, Florida, said South line also being the North line of the South three-fourths (3/4ths) of said Section 12; thence run S 89°28'08" E along said South line of RUSTIC HILLS, PHASE III, a distance of 1505.49 feet to the Point of Intersection with the Southerly Right of Way line of S.W. Murphy Road, said point lying on a curve concave to the Northeast, having a radius of 693.66 feet, a radial line to which point bears S 26°29'35" W; thence run Southeasterly, along the arc of said curve, and said Southerly Right of Way line, a distance of 199.60 feet, through a central angle of 16°29'13" to the Point of Intersection with said Westerly Right of Way line of S.W. High Meadow Avenue, a radial line to which point bears S 10°00'22" W; thence run S 0°30'53" W along said Westerly Right of Way line a distance of 1244.27 feet to the POINT OF BEGINNING.



CURVE	DELTA	RADIUS	LENGTH	TANGENT	CHORD	CHORD BEARING
C 1	90°00'00"	25.00'	39.27'	25.00'	35.26'	S 45°30'53" W
C 2	90°00'00"	25.00'	39.27'	25.00'	35.26'	N 44°29'07" W
C 3	22°25'12"	230.00'	90.00'	45.58'	89.43'	N 78°16'31" W
C 4	12°08'00"	230.00'	48.71'	24.44'	48.62'	N 60°59'56" W
C 5	2°47'42"	1230.00'	60.00'	30.01'	59.99'	N 53°32'03" W
C 6	6°03'20"	1230.00'	130.00'	65.06'	129.94'	N 49°06'32" W
C 7	6°03'20"	1230.00'	130.00'	65.06'	129.94'	N 43°03'12" W
C 8	6°03'20"	1230.00'	130.00'	65.06'	129.94'	N 36°59'52" W
C 9	6°03'20"	1230.00'	130.00'	65.06'	129.94'	N 30°56'31" W
C 10	5°02'46"	1230.00'	108.32'	54.20'	108.29'	N 25°23'28" W
C 11	28°38'52"	100.00'	50.00'	25.53'	49.48'	N 02°40'34" W
C 12	32°16'47"	100.00'	56.34'	28.94'	55.60'	N 27°47'16" W
C 13	32°16'47"	100.00'	56.34'	28.94'	55.60'	N 60°04'02" E
C 14	14°19'26"	100.00'	25.00'	12.57'	24.93'	N 83°22'09" E
C 15	7°30'45"	330.00'	43.27'	21.67'	43.24'	S 85°42'45" E
C 16	16°29'39"	330.00'	95.00'	47.83'	94.67'	S 73°42'33" E
C 17	16°29'39"	330.00'	95.00'	47.83'	94.67'	S 57°12'54" E
C 18	16°29'39"	330.00'	95.00'	47.83'	94.67'	S 40°43'15" E
C 19	16°29'39"	330.00'	95.00'	47.83'	94.67'	S 24°13'36" E
C 20	16°29'39"	330.00'	95.00'	47.83'	94.67'	S 07°43'56" E
C 21	90°00'00"	25.00'	39.27'	25.00'	35.36'	S 44°29'07" E
C 22	90°00'00"	25.00'	39.27'	25.00'	35.36'	N 45°30'53" E
C 23	34°33'13"	170.00'	102.52'	52.87'	100.98'	N 72°12'30" W
C 24	14°25'16"	1170.00'	294.48'	148.02'	293.70'	N 47°33'16" W
C 25	11°23'19"	1170.00'	232.56'	116.66'	232.18'	N 34°48'59" W
C 26	100°00'32"	25.00'	43.64'	29.80'	38.30'	N 20°52'56" E
C 27	77°14'52"	100.00'	134.82'	79.90'	124.84'	N 32°15'46" E
C 28	96°53'32"	25.00'	42.28'	28.20'	37.42'	N 42°05'06" E
C 29	12°50'26"	270.00'	60.51'	30.38'	60.38'	S 83°02'55" E
C 30	77°08'35"	270.00'	363.53'	215.32'	336.69'	S 38°03'24" E
C 31	03°20'40"	935.81'	54.62'	27.32'	54.62'	N 09°45'54" W
C 32	10°02'17"	693.66'	121.53'	60.92'	121.37'	N 74°58'29" W
C 33	5°52'06"	100.00'	10.24'	5.13'	10.24'	N 19°56'03" W
A	34°33'13"	200.00'	120.61'	62.20'	118.80'	N 72°12'30" W
B	32°03'49"	1200.00'	671.54'	344.81'	662.81'	N 38°54'00" W
C	113°23'58"	70.00'	138.54'	106.56'	117.01'	N 33°49'53" E
D	246°36'02"	70.00'	301.28'	106.56'	117.01'	N 33°49'53" E
E	89°59'01"	300.00'	471.15'	299.91'	424.20'	N 44°28'37" W
F	16°29'13"	693.66'	199.60'	100.49'	198.91'	S 71°45'02" E

### SURVEYOR'S CERTIFICATE

STATE OF FLORIDA  
COUNTY OF MARTIN

I, LEE BROCK, DO HEREBY CERTIFY THAT THIS PLAT OF CRANE CREEK RACQUET CLUB PHASE FOUR IS A TRUE AND CORRECT REPRESENTATION OF THE LANDS SURVEYED, THAT THE SURVEY WAS MADE UNDER MY SUPERVISION, AND THE SURVEY DATA COMPLIES WITH ALL THE REQUIREMENTS OF CHAPTER 177, PART ONE, FLORIDA STATUTES.

LEE BROCK, REGISTERED LAND SURVEYOR  
FLORIDA CERTIFICATE NO. 2157

CRANE CREEK RACQUET CLUB, PHASE THREE  
PUD, PLAT BOOK 1, PAGE 8, MARTIN COUNTY, FLORIDA  
S 88°54'27" E - 2602.06'  
FND. RRS SOUTH LINE OF SEC. 12  
FND. PRM 17

UNPLATTED