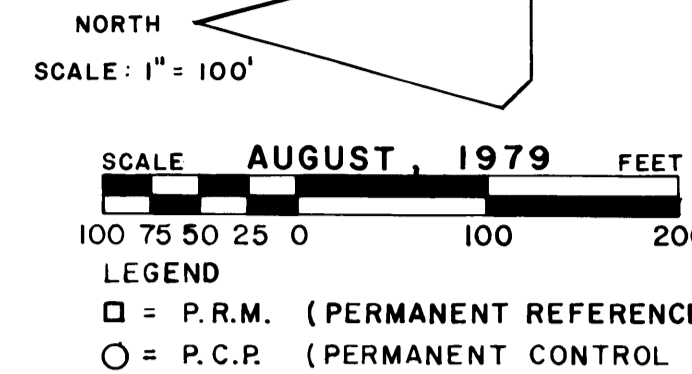


CRANE CREEK RACQUET CLUB PHASE THREE

Section 12, Township 38 South, Range 40 East, Martin County, Florida



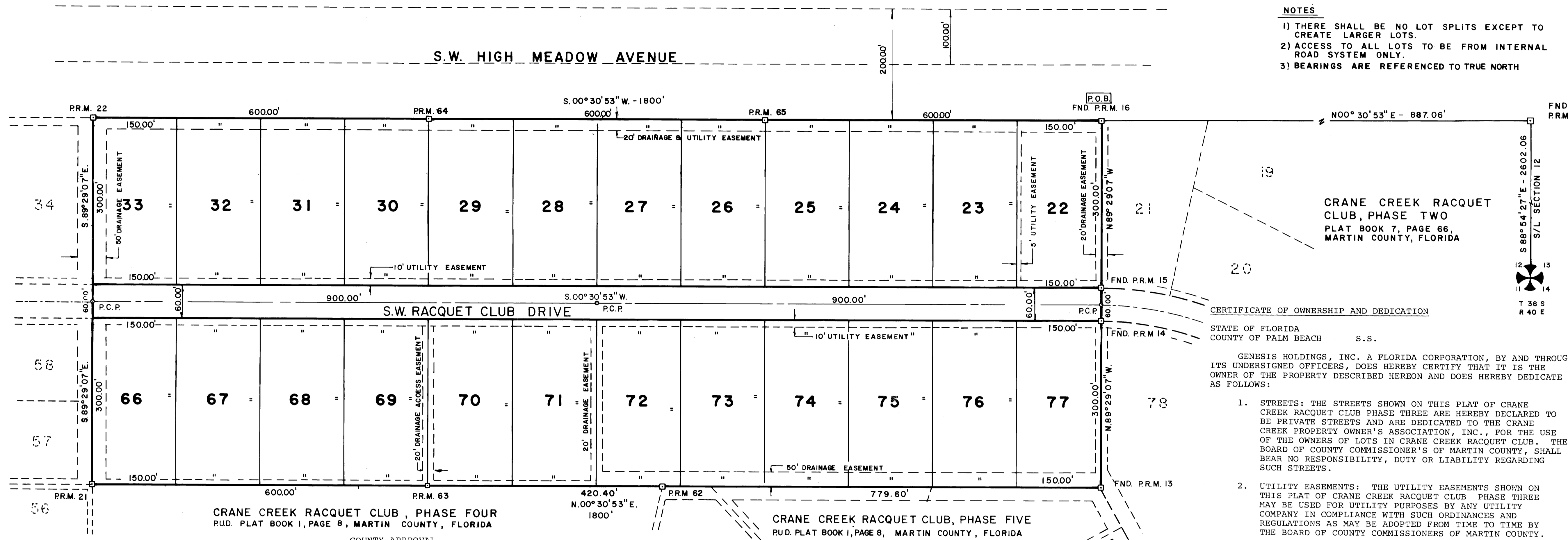
LEGEND
 □ = P.R.M. (PERMANENT REFERENCE MONUMENT)
 ○ = P.C.P. (PERMANENT CONTROL POINT)

FILED
 OCT 26 1979
 LOUISE V. ISAACS
 CLERK OF CIRCUIT COURT
 BY: Charlotte Burkey
 DEPUTY CLERK

I, LOUISE V. ISAACS, CLERK OF THE CIRCUIT COURT OF MARTIN COUNTY, FLORIDA, HEREBY CERTIFY THAT THIS PLAT WAS FILED FOR RECORD IN PLAT BOOK 7, PAGE 79, MARTIN COUNTY, FLORIDA, PUBLIC RECORDS, THIS 26TH DAY OF OCTOBER, 1979.

FILE NO. 359304

UNPLATTED



NOTES
 1) THERE SHALL BE NO LOT SPLITS EXCEPT TO CREATE LARGER LOTS.
 2) ACCESS TO ALL LOTS TO BE FROM INTERNAL ROAD SYSTEM ONLY.
 3) BEARINGS ARE REFERENCED TO TRUE NORTH

CRANE CREEK RACQUET CLUB, PHASE FOUR
 PUD. PLAT BOOK 1, PAGE 8, MARTIN COUNTY, FLORIDA

CRANE CREEK RACQUET CLUB, PHASE TWO
 PLAT BOOK 7, PAGE 66, MARTIN COUNTY, FLORIDA

CRANE CREEK RACQUET CLUB, PHASE FOUR
 PUD. PLAT BOOK 1, PAGE 8, MARTIN COUNTY, FLORIDA

CRANE CREEK RACQUET CLUB, PHASE FIVE
 PUD. PLAT BOOK 1, PAGE 8, MARTIN COUNTY, FLORIDA

COUNTY APPROVAL

STATE OF FLORIDA
 COUNTY OF MARTIN

THIS PLAT IS HEREBY APPROVED BY THE UNDERSIGNED ON THE DATE OR DATES INDICATED.

DATE October 25, 1979
 COUNTY ENGINEER
 DATE October 25, 1979
 COUNTY ATTORNEY
 DATE October 25, 1979
 CHAIRMAN, PLANNING & ZONING COMMISSION
 DATE October 25, 1979
 CHAIRMAN, BOARD OF COUNTY COMMISSIONERS

ATTEST: Louise V. Isaacs
 Clerk
 By Charlotte Burkey oc

SURVEYOR'S CERTIFICATE

STATE OF FLORIDA
 COUNTY OF MARTIN

I, LEE BROCK, DO HEREBY CERTIFY THAT THIS PLAT OF CRANE CREEK RACQUET CLUB PHASE THREE IS A TRUE AND CORRECT REPRESENTATION OF THE LANDS SURVEYED, THAT THE SURVEY WAS MADE UNDER MY SUPERVISION, AND THE SURVEY DATA COMPLIES WITH ALL THE REQUIREMENTS OF CHAPTER 177, PART ONE, FLORIDA STATUTES.

LEE BROCK, REGISTERED LAND SURVEYOR
 FLORIDA CERTIFICATE NO. 2157

TITLE CERTIFICATION

STATE OF FLORIDA
 COUNTY OF PALM BEACH

I, PETER VAN ANDEL, A MEMBER OF THE FLORIDA BAR, HEREBY CERTIFY THAT AS OF 30TH DAY OF SEPTEMBER, 1979:

- APPARENT RECORD TITLE TO THE LAND DESCRIBED AND SHOWN ON THIS PLAT IS IN THE NAME OF THE PERSON (S), CORPORATION, OR OTHER ENTITY EXECUTING THE DEDICATION HEREON.
- ALL RECORDED MORTGAGES NOT SATISFIED OR RELEASED OF RECORD ENCUMBERING THE LAND DESCRIBED HEREON ARE AS FOLLOWS:
 MORTGAGE DATED JUNE 11, 1979, FROM GENESIS HOLDINGS, INC. AND SOUTH FLORIDA LAND, INC., BOTH FLORIDA CORPORATIONS, TO THE TORONTO-DOMINION BANK, A BANK CHARTERED UNDER THE BANK ACT OF CANADA, RECORDED IN OFFICIAL RECORD BOOK 473, PAGE 152, PUBLIC RECORDS OF MARTIN COUNTY, FLORIDA.

DATED THIS 10TH DAY OF OCTOBER, 1979.

Peter Van An del
 PETER VAN ANDEL
 ATTORNEY AT LAW
 251 SOUTH COUNTY ROAD
 PALM BEACH, FLA. 33480

CERTIFICATE OF OWNERSHIP AND DEDICATION

STATE OF FLORIDA
 COUNTY OF PALM BEACH S.S.

GENESIS HOLDINGS, INC. A FLORIDA CORPORATION, BY AND THROUGH ITS UNDERSIGNED OFFICERS, DOES HEREBY CERTIFY THAT IT IS THE OWNER OF THE PROPERTY DESCRIBED HEREON AND DOES HEREBY DEDICATE AS FOLLOWS:

- STREETS: THE STREETS SHOWN ON THIS PLAT OF CRANE CREEK RACQUET CLUB PHASE THREE ARE HEREBY DECLARED TO BE PRIVATE STREETS AND ARE DEDICATED TO THE CRANE CREEK PROPERTY OWNER'S ASSOCIATION, INC., FOR THE USE OF THE OWNERS OF LOTS IN CRANE CREEK RACQUET CLUB. THE BOARD OF COUNTY COMMISSIONERS OF MARTIN COUNTY, SHALL BEAR NO RESPONSIBILITY, DUTY OR LIABILITY REGARDING SUCH STREETS.
- UTILITY EASEMENTS: THE UTILITY EASEMENTS SHOWN ON THIS PLAT OF CRANE CREEK RACQUET CLUB PHASE THREE MAY BE USED FOR UTILITY PURPOSES BY ANY UTILITY COMPANY IN COMPLIANCE WITH SUCH ORDINANCES AND REGULATIONS AS MAY BE ADOPTED FROM TIME TO TIME BY THE BOARD OF COUNTY COMMISSIONERS OF MARTIN COUNTY.
- DRAINAGE EASEMENTS: THE DRAINAGE EASEMENTS SHOWN ON THIS PLAT OF CRANE CREEK RACQUET CLUB PHASE THREE MAY BE USED FOR DRAINAGE PURPOSES IN COMPLIANCE WITH SUCH ORDINANCES AND REGULATIONS AS MAY BE ADOPTED FROM TIME TO TIME BY THE BOARD OF COUNTY COMMISSIONERS OF MARTIN COUNTY. CRANE CREEK PROPERTY OWNER'S ASSOCIATION, INC. SHALL BEAR RESPONSIBILITY TO MAINTAIN SAID DRAINAGE EASEMENTS.

SIGNED AND SEALED THIS 21ST DAY OF August, 1979, ON BEHALF OF SAID CORPORATION BY ITS PRESIDENT AND ATTESTED TO BY ITS SECRETARY

GENESIS HOLDINGS, INC.
 (CORPORATE SEAL)
 ATTEST: Wyn Pope
 WYN POPE
 SECRETARY
 BY: Peter D. Cummings
 PETER D. CUMMINGS
 PRESIDENT

ACKNOWLEDGEMENT

STATE OF FLORIDA
 COUNTY OF PALM BEACH S.S.

BEFORE ME, THE UNDERSIGNED NOTARY PUBLIC, PERSONALLY APPEARED PETER D. CUMMINGS AND WYN POPE, TO ME WELL KNOWN TO BE THE PRESIDENT AND SECRETARY, RESPECTIVELY, OF GENESIS HOLDINGS, INC., A FLORIDA CORPORATION, AND THEY ACKNOWLEDGED THAT THEY EXECUTED SUCH INSTRUMENT AS SUCH OFFICERS OF SAID CORPORATION.

WITNESS, MY HAND AND OFFICIAL SEAL THIS 21ST DAY OF August, 1979.

MY COMMISSION EXPIRES: March 31, 1982
 Notary Public
 STATE OF FLORIDA AT LARGE

LEGAL DESCRIPTION

Start at the Southwest corner of Section 12, Township 38 South, Range 40 East, Martin County, Florida; thence run S 88°54'27" E along the South line of said Section 12, a distance of 2602.06 feet to the Point of Intersection with the Westerly Right of Way line of S.W. High Meadow Avenue; thence run N 0°30'53" E along said Westerly Right of Way line a distance of 887.06 feet to the Northerly line of CRANE CREEK RACQUET CLUB, PHASE TWO, Plat Book 7, Page 66, Public Records of Martin County, Florida, said point being the POINT OF BEGINNING; thence run N 89°29'07" W along said Northerly line a distance of 660.00 feet to the Point of Intersection with the Easterly line of CRANE CREEK RACQUET CLUB, PHASE FIVE, PUD Plat Book 1, Page 8, Public Records of Martin County, Florida; thence run N 0°30'53" E along said Easterly line and the Easterly line of CRANE CREEK RACQUET CLUB, PHASE FOUR, PUD Plat Book 1, page 8, Public Records of Martin County, Florida, a distance of 1800.00 feet to the Point of Intersection with the Southerly line of said CRANE CREEK RACQUET CLUB, PHASE FOUR; thence run S 89°29'07" E along said Southerly line a distance of 660.00 feet to the Point of Intersection with said Westerly Right of Way line of S.W. High Meadow Avenue; thence run S 0°30'53" W along said Westerly Right of Way line a distance of 1800.00 feet to the POINT OF BEGINNING.