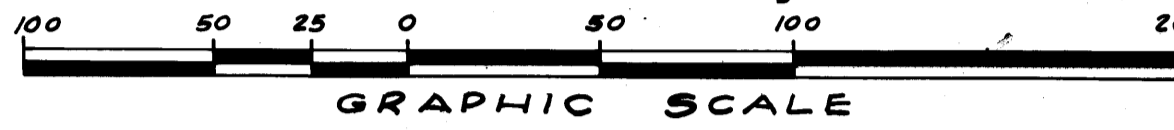


RIVER PINES

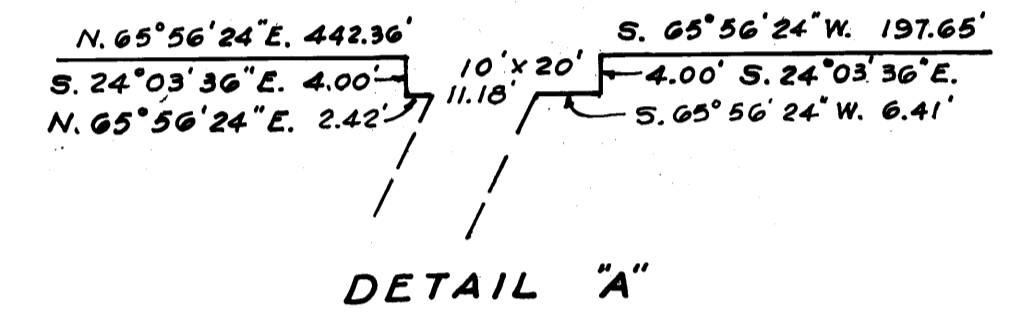
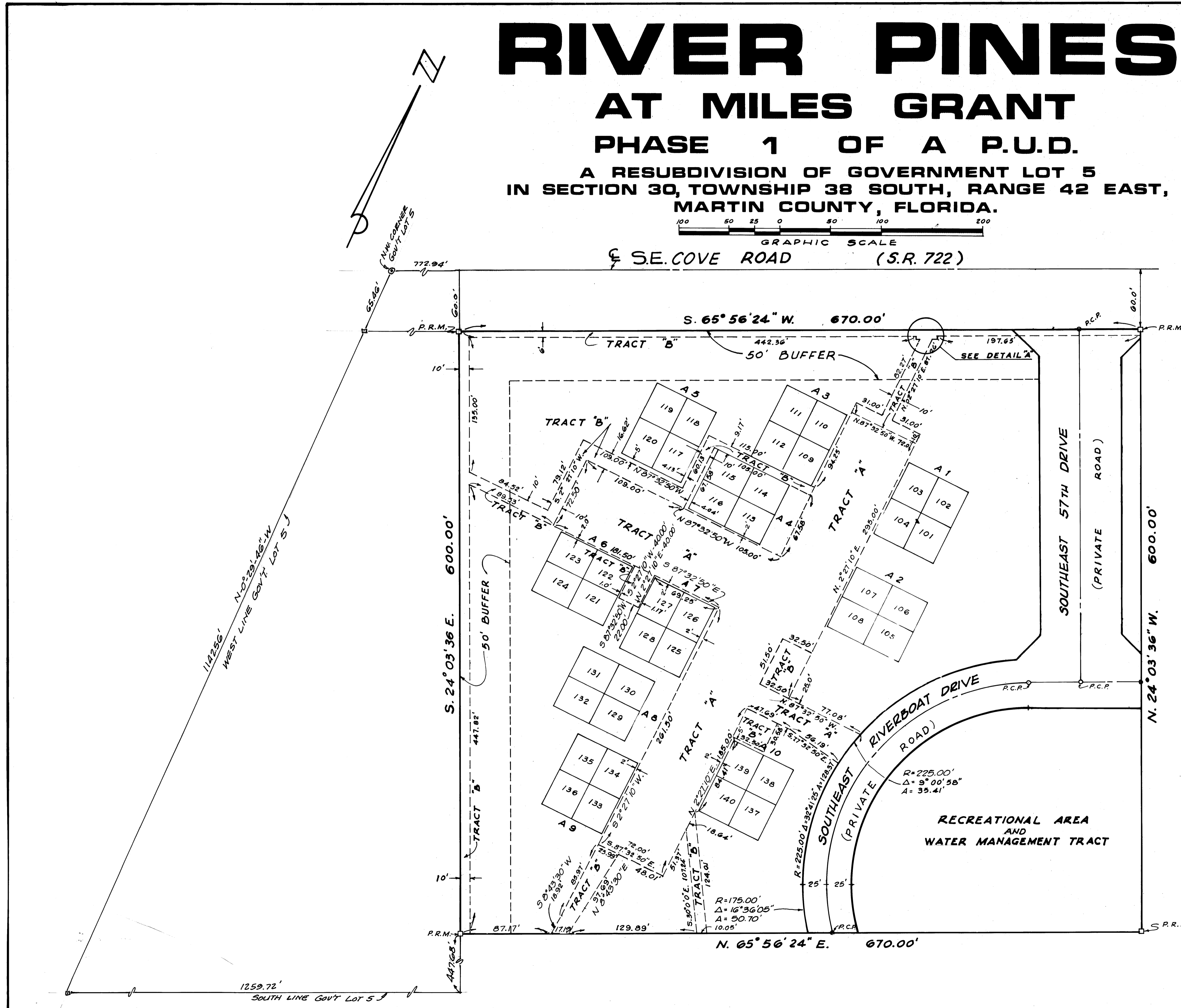
AT MILES GRANT

PHASE 1 OF A P.U.D.

A RESUBDIVISION OF GOVERNMENT LOT 5
IN SECTION 30, TOWNSHIP 38 SOUTH, RANGE 42 EAST,
MARTIN COUNTY, FLORIDA.



SE COVE ROAD (S.R. 722)



□ P.R.M. = PERMANENT REFERENCE MONUMENT
○ P.C.P. = PERMANENT CONTROL POINT

ADAIR & BRADY, INC. CONSULTING ENGINEERS & LAND SURVEYORS WEST PALM BEACH		RIVER PINES AT MILES GRANT	
SCALE 1" = 50'	DWN. G.M.W.	DATE 7/79	SHEET 2 of 2
JOB NO. 6-8525	CHKD. J.L.K.	DATE 7/79	FP 1155
	RB.	PP.	