

FED. ROAD DIV. NO.	STATE	F. A. PROJECT NO.	FISCAL YEAR	SHEET NO.
3	FLA.			

LOUISE V. ISAACS
CLERK OF CIRCUIT COURT
BY _____ D.C.

THIS IS TO CERTIFY THAT THE WITHIN AND ATTACHED SHEETS NUMBERED ONE (1) TO TWO(2), INCLUSIVE, CONSTITUTE A TRUE COPY OF THE OFFICIAL RIGHT OF WAY MAP SHOWING LOCATION AND SURVEY BY THE STATE OF FLORIDA DEPARTMENT OF TRANSPORTATION FOR A PORTION OF STATE ROAD AIA 'LEG A', DESIGNATED AS SECTION 89030 IN MARTIN COUNTY, FLORIDA.

THE PROPERTY OUTLINED IN RED INK, AND LABELED MAINT. R/W LINE ON SAID SHEETS HAS BEEN VESTED IN THE STATE OF FLORIDA DEPARTMENT OF TRANSPORTATION, PURSUANT TO THE PROVISIONS OF SECTION 95.361 FLORIDA STATUTES.

IN WITNESS WHEREOF, WE HAVE HEREUNTO SET OUR HANDS AND AFFIXED THE SEAL OF THE STATE OF FLORIDA DEPARTMENT OF TRANSPORTATION, AT TALLAHASSEE, FLORIDA, THIS 14th DAY OF Aug. A.D. 1979.

THIS IS TO CERTIFY THE RIGHT-OF-WAY LIMITS AS SHOWN ON THIS MAP HAVE BEEN MAINTAINED CONTINUOUSLY FOR FOUR (4) YEARS WITHOUT INTERRUPTION OR DISTURBANCE BETWEEN MILE POSTS 50.000 AND 51.335 (S.L.D.)

J. R. Thaxton
MAINTENANCE ENGINEER

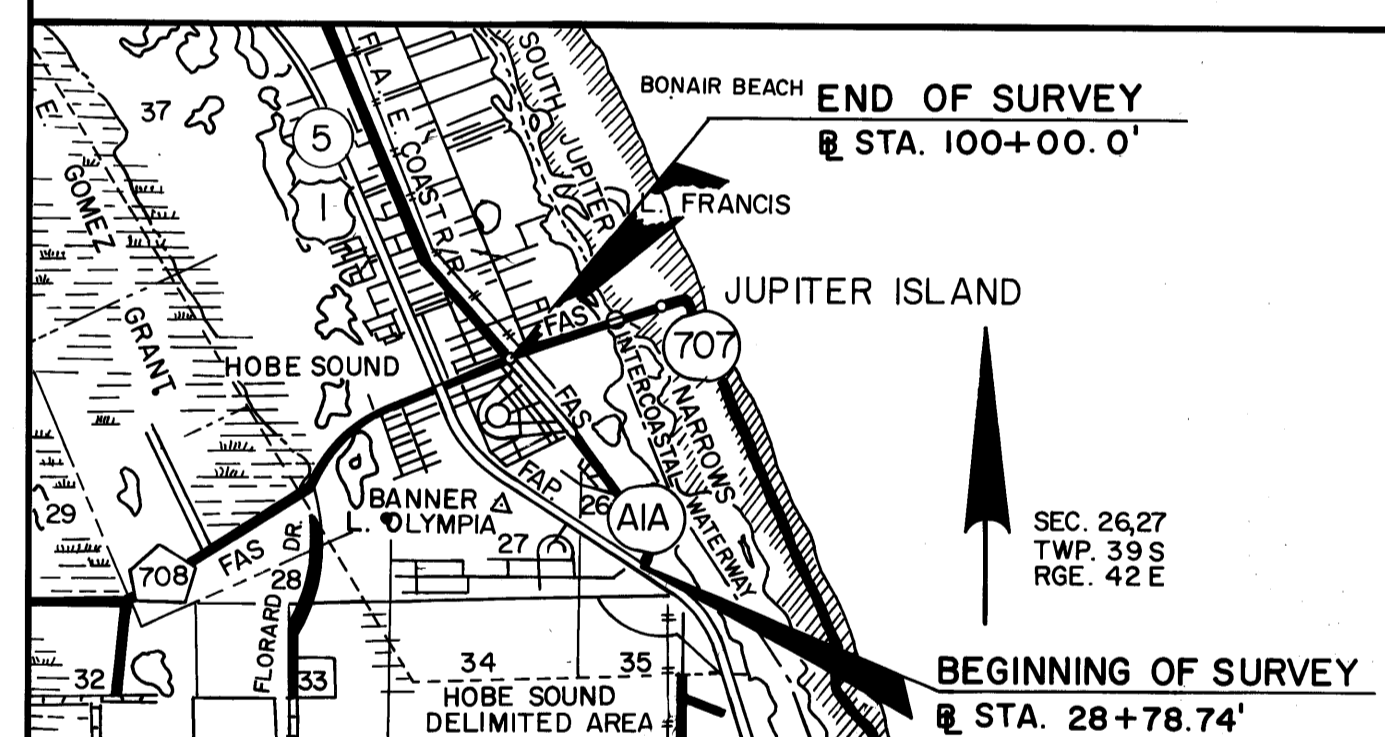
William H. Rose
SECRETARY OF TRANSPORTATION,
STATE OF FLORIDA DEPARTMENT
OF TRANSPORTATION

Carey Sealer
EXECUTIVE SECRETARY,
STATE OF FLORIDA DEPARTMENT
OF TRANSPORTATION

ACCEPTED FOR FILES AND RECORDED IN THE PUBLIC RECORDS OF MARTIN COUNTY, FLORIDA, THIS 20th DAY OF August, A.D. 1979 IN RIGHT OF WAY ROAD PLAT BOOK 7 PAGE 92.

File #350672

Louise V. Isaacs
CLERK OF CIRCUIT COURT OF
MARTIN COUNTY, FLORIDA
By *Charlotte Burkey DC*



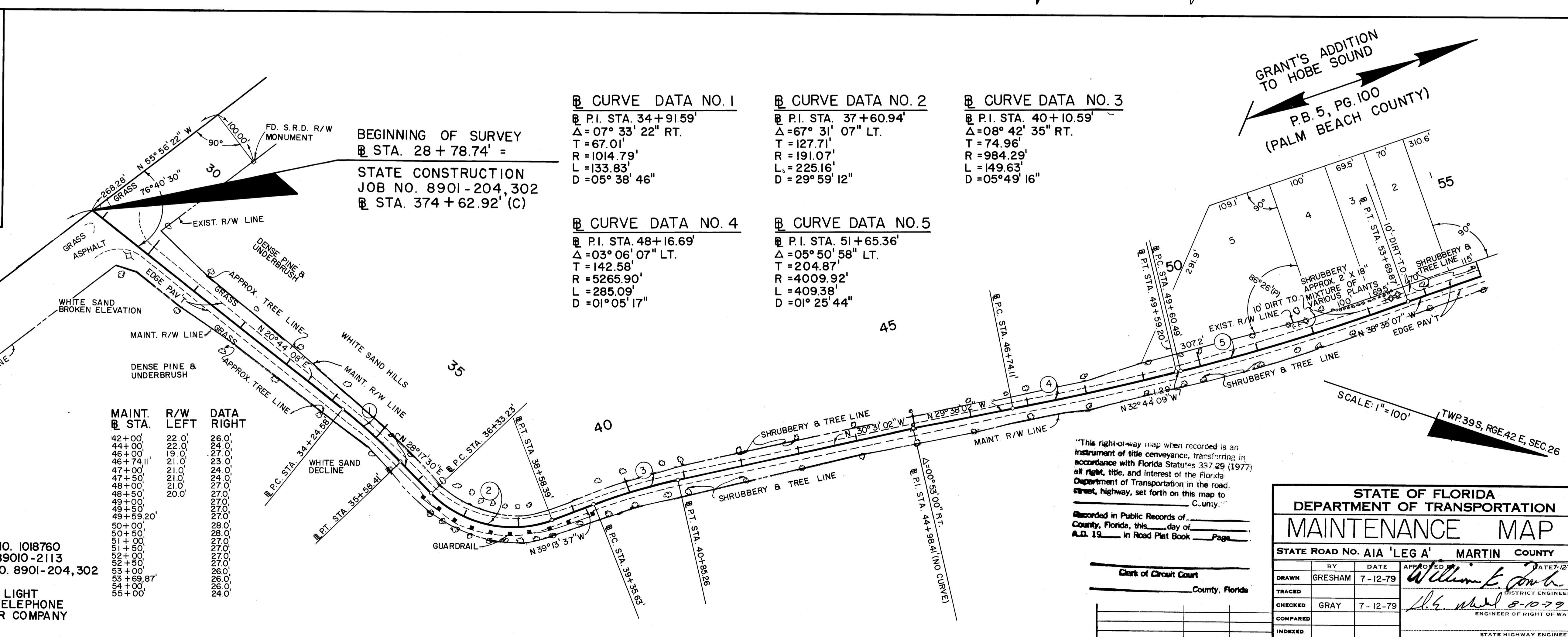
LOCATION MAP SCALE: 1"=1 MILE

MAINT. STA.	R/W LEFT	DATA RIGHT
29+75'	47.0'	47.0'
30+00'	48.0'	35.0'
31+00'	35.0'	35.0'
32+00'	35.0'	35.0'
33+00'	35.0'	35.0'
34+00'	35.0'	35.0'
35+00'	35.0'	35.0'
36+00'	35.0'	35.0'
37+00'	35.0'	35.0'
38+00'	35.0'	35.0'
39+00'	35.0'	35.0'
40+00'	35.0'	35.0'
41+00'	35.0'	35.0'

REFERENCES: FIELD BOOK NO. 1018760
R/W MAP NO. 89010-2113
CONST. MAP NO. 8901-204,302

NOTE: BEARING WAS TAKEN FROM D.O.T. R/W MAP 89010-2113

UTILITIES: FLORIDA POWER & LIGHT
SOUTHERN BELL TELEPHONE
HOBE SOUND WATER COMPANY



BEGINNING OF SURVEY
@ STA. 28 + 78.74' =
STATE CONSTRUCTION
JOB NO. 8901-204,302
@ STA. 374 + 62.92' (C)

Curve Data No. 1
P.I. STA. 34 + 91.59'
Δ = 07° 33' 22" RT.
T = 67.01'
R = 1014.79'
L = 133.83'
D = 05° 38' 46"

Curve Data No. 2
P.I. STA. 37 + 60.94'
Δ = 67° 31' 07" LT.
T = 127.71'
R = 191.07'
L = 225.16'
D = 29° 59' 12"

Curve Data No. 3
P.I. STA. 40 + 10.59'
Δ = 08° 42' 35" RT.
T = 74.96'
R = 984.29'
L = 149.63'
D = 05° 49' 16"

Curve Data No. 4
P.I. STA. 48 + 16.69'
Δ = 03° 06' 07" LT.
T = 142.58'
R = 5265.90'
L = 285.09'
D = 01° 05' 17"

Curve Data No. 5
P.I. STA. 51 + 65.36'
Δ = 05° 50' 58" LT.
T = 204.87'
R = 4009.92'
L = 409.38'
D = 01° 25' 44"

"This right-of-way map when recorded is an instrument of title conveyance, transferring in accordance with Florida Statutes 337.29 (1977) all right, title, and interest of the Florida Department of Transportation in the road, street, highway, set forth on this map to _____ C.unity."

Recorded in Public Records of _____ County, Florida, this _____ day of _____ A.D. 19____ in Road Plat Book _____ Page _____

Clerk of Circuit Court
County, Florida

STATE OF FLORIDA DEPARTMENT OF TRANSPORTATION				
MAINTENANCE MAP				
STATE ROAD NO. AIA 'LEG A' MARTIN COUNTY				
DRAWN	BY	DATE	APPROVED	DATE
GRESHAM		7-12-79	<i>William L. Smith</i>	7-12-79
CHECKED	GRAY	7-12-79	<i>W. L. Smith</i>	
COMPARED				
INDEXED				
SECTION 89030			SHEET 1 OF 2	