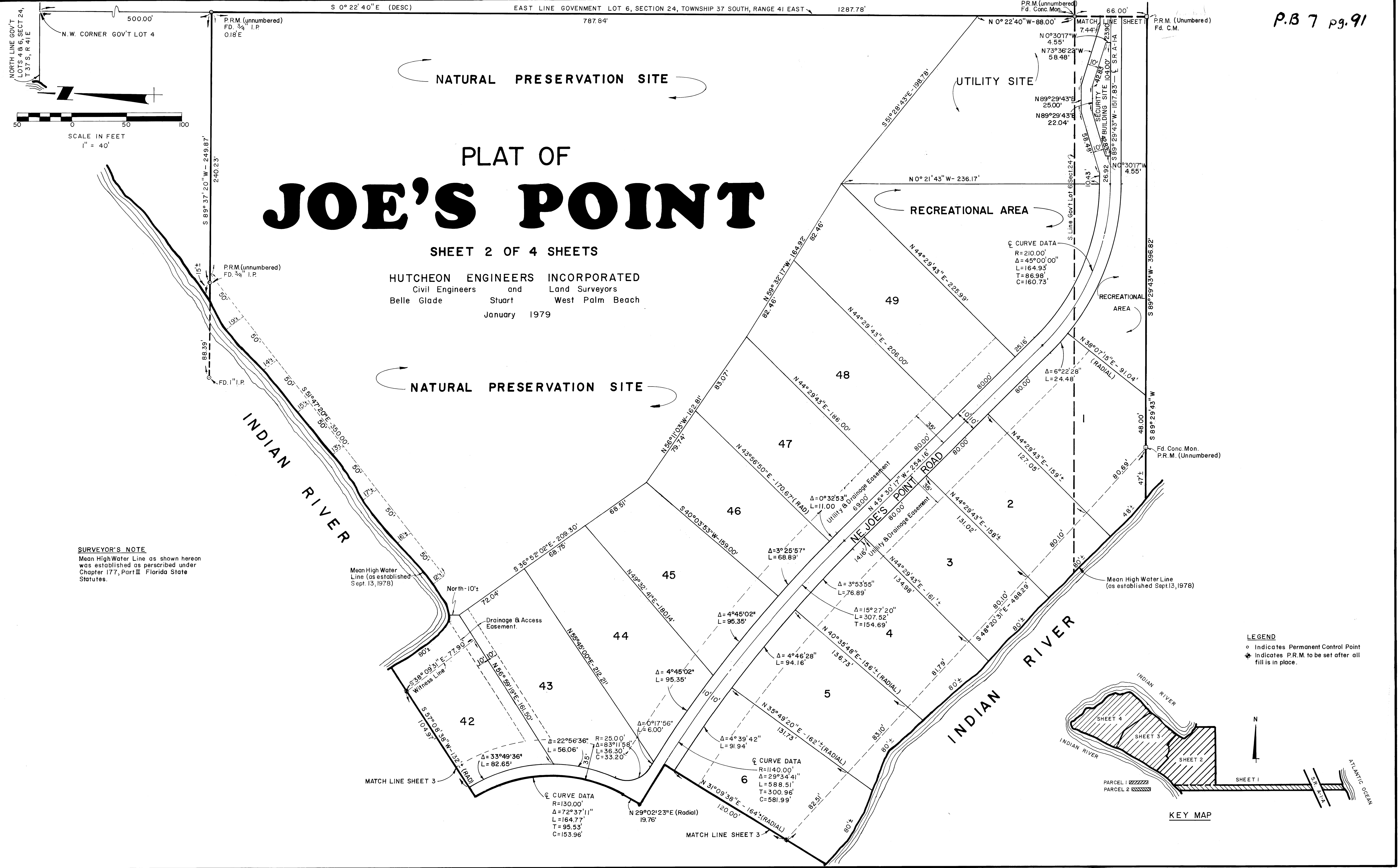


187 pg 91

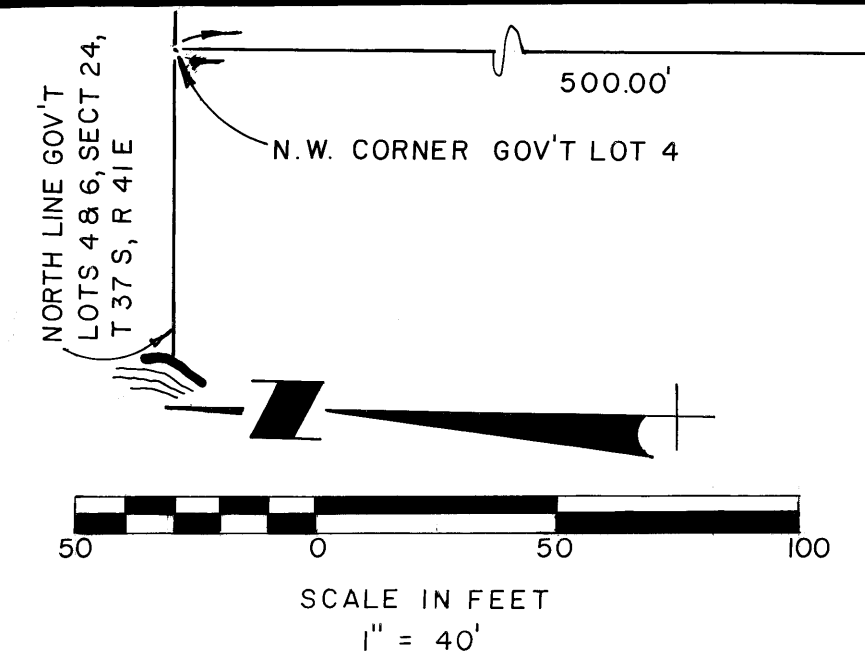
P.B 7 pg. 91



PLAT OF JOE'S POINT

SHEET 2 OF 4 SHEETS

HUTCHEON ENGINEERS INCORPORATED
Civil Engineers and Land Surveyors
Belle Glade Stuart West Palm Beach
January 1979



SURVEYOR'S NOTE
Mean High Water Line as shown hereon was established as prescribed under Chapter 177, Part II Florida State Statutes.

LEGEND
○ Indicates Permanent Control Point
⊕ Indicates P.R.M. to be set after all fill is in place.

