

# A PLAT OF CORAL LAKES

MARCH, 1979

BEING A SUBDIVISION OF A PORTION OF HANSON GRANT; A PLAT RECORDED IN PLAT BOOK I, PAGE 11 OF PALM BEACH (NOW MARTIN) COUNTY, FLORIDA

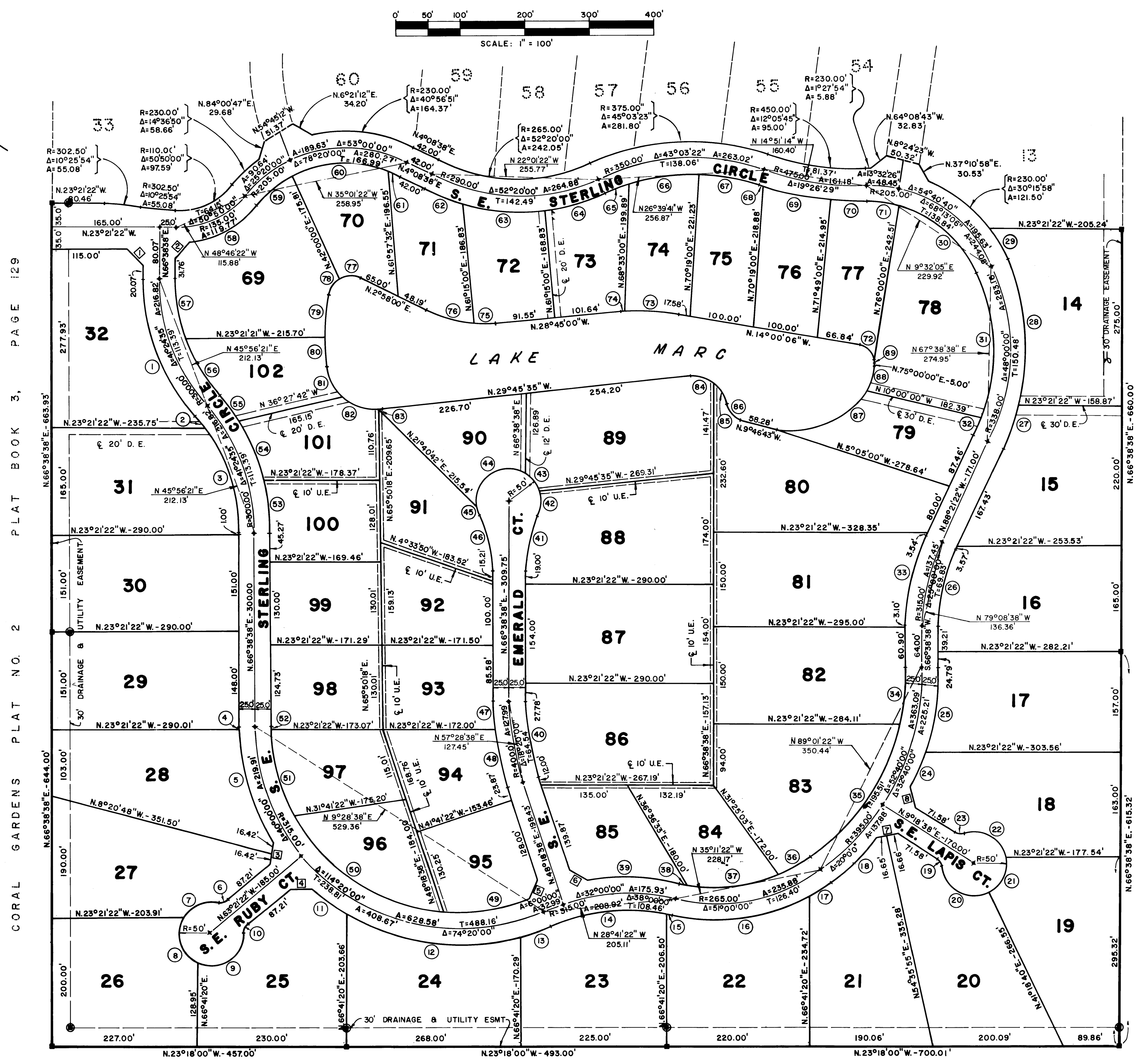
SHEET 3 OF 3

**CHORD TABLE**

BEARING	DISTANCE
1 N 21°38'38" E	35.36'
2 N 72°14'22" W	32.88'
3 N 75°34'50" E	32.84'
4 N 22°17'34" W	32.84'
5 N 89°51'49" E	32.57'
6 N 07°14'50" E	32.84'
7 N 32°27'50" W	33.31'
8 N 51°05'06" E	33.31'

**CURVE TABLE**

R	A	A
1. 325.00'	41°24'35"	234.89'
2. 275.00'	4°47'59"	23.04'
3. 275.00'	36°36'36"	175.72'
4. 340.00'	00°30'20"	3.00'
5. 340.00'	31°37'15"	187.64'
6. 15.00'	52°01'13"	13.62'
7. 50.00'	71°29'52"	62.39'
8. 50.00'	97°05'55"	84.73'
9. 50.00'	115°26'39"	100.74'
10. 15.00'	52°01'13"	13.62'
11. 340.00'	11°34'20"	68.67'
12. 340.00'	46°48'10"	277.73'
13. 340.00'	8°05'05"	47.98'
14. 290.00'	36°23'23"	184.18'
15. 290.00'	01°36'37"	8.15'
16. 290.00'	43°20'17"	219.35'
17. 290.00'	07°39'43"	38.78'
18. 420.00'	13°32'55"	99.32'
19. 15.00'	52°01'12"	13.62'
20. 50.00'	111°39'17"	97.44'
21. 50.00'	74°16'46"	64.82'
22. 50.00'	98°06'22"	85.61'
23. 15.00'	52°01'12"	13.62'
24. 420.00'	07°52'04"	57.68'
25. 420.00'	18°20'51"	134.49'
26. 290.00'	25°00'00"	126.54'
27. 363.00'	11°25'58"	72.43'
28. 363.00'	36°34'02"	231.67'
29. 230.00'	13°49'54"	55.52'
30. 180.00'	51°35'58"	162.10'
31. 313.00'	42°34'21"	232.57'
32. 313.00'	05°25'39"	29.65'
33. 340.00'	25°00'00"	148.35'
34. 370.00'	13°56'03"	89.98'
35. 370.00'	38°43'57"	250.12'
36. 240.00'	13°55'07"	58.30'
37. 240.00'	34°26'57"	144.30'
38. 240.00'	02°37'56"	11.03'
39. 340.00'	24°07'35"	143.17'
40. 375.00'	18°20'00"	119.99'
41. 200.00'	25°50'31"	90.20'
42. 50.00'	44°29'36"	38.83'
43. 50.00'	40°58'59"	35.76'
44. 50.00'	129°29'19"	113.00'
45. 50.00'	16°43'07"	14.59'



**SURVEYOR'S NOTES**

MONUMENTATION:

- = DENOTES PERMANENT REFERENCE MONUMENT (P.R.M.)
- = DENOTES PERMANENT CONTROL POINT (P.C.P.)
- ⊙ = DENOTES 30' OFFSET TO PERMANENT REFERENCE MONUMENT
- U.E. = DENOTES UTILITY EASEMENT
- D.E. = DENOTES DRAINAGE EASEMENT

**CURVE TABLE**

R	A	A
46. 200.00'	25°50'31"	90.20'
47. 425.00'	06°00'00"	44.51'
48. 425.00'	12°20'00"	91.48'
49. 290.00'	26°39'19"	134.92'
50. 290.00'	56°39'24"	286.76'
51. 290.00'	27°47'13"	140.64'
52. 290.00'	01°02'27"	5.27'
53. 325.00'	14°44'52"	83.65'
54. 325.00'	17°37'46"	100.00'
55. 325.00'	09°01'57"	51.24'
56. 275.00'	21°37'40"	103.80'
57. 275.00'	19°46'55"	94.95'
58. 160.00'	43°04'00"	120.26'
59. 180.00'	23°20'05"	73.31'
60. 180.00'	48°41'56"	152.99'
61. 180.00'	06°17'59"	19.79'
62. 315.00'	11°51'02"	65.15'
63. 315.00'	23°10'43"	127.43'
64. 315.00'	17°18'15"	95.14'
65. 325.00'	07°36'31"	43.16'
66. 325.00'	19°08'18"	108.56'
67. 325.00'	16°18'33"	92.51'
68. 500.00'	00°55'53"	8.13'
69. 500.00'	12°10'31"	106.25'
70. 500.00'	06°20'05"	55.28'
71. 180.00'	16°37'08"	52.21'
72. 25.00'	75°59'46"	33.16'
73. 350.00'	13°30'19"	82.50'
74. 350.00'	01°14'35"	7.59'
75. 200.00'	09°35'00"	33.45'
76. 200.00'	22°08'00"	77.26'
77. 35.00'	55°42'02"	34.02'
78. 35.00'	52°17'58"	31.95'
79. 425.00'	09°10'28"	68.05'
80. 425.00'	06°01'49"	44.73'
81. 75.00'	42°13'21"	55.27'
82. 75.00'	46°00'00"	60.21'
83. 75.00'	01°17'14"	1.68'
84. 50.00'	45°29'51"	39.70'
85. 50.00'	44°30'09"	38.84'
86. 30.00'	70°01'08"	36.66'
87. 120.71'	76°00'00"	160.12'
88. 120.71'	19°13'17"	40.50'
89. 25.00'	13°00'19"	5.68'

ST. LUCIE INLET FARMS PLAT BOOK I, PAGE 98 (P.B. CO.)

NOTE:

1. IN ADDITION TO EASEMENTS SHOWN ON THIS PLAT THERE IS A 10' UTILITY EASEMENT CONTIGUOUS TO THE ROAD RIGHT-OF-WAY LINE ACROSS ALL LOTS.
2. THERE SHALL BE NO LOT SPLITS EXCEPT TO CREATE LARGER LOTS.

LINDAHL, BROWNING & FERRARI, INC.  
 Consulting Engineers, Planners & Surveyors  
 426 INDIANTOWN ROAD JUPITER, FLORIDA 33458  
 951 COLORADO AVENUE STUART, FLORIDA 33494